

Chansons A Boire - C`Est a Boire

Chant

Accompagnement

6

Chant

Accompagnement

11

Chant

Accompagnement

16

Chant

Accompagnement

22

Chant

Accompagnement

28

Chant

Accompagnement

34

Chant

39

Chant

Accompagnement

44

Chant

Accompagnement

49

Chant

Accompagnement

55

Chant

Accompagnement

61

Chant

Accompagnement

66

Chant

71

Chant

Accompagnement

76

Chant

Accompagnement

81

Chant

Accompagnement

87

Chant

Accompagnement

93

Chant

Accompagnement

98

Chant

103

Chant

Accompagnement

108

Chant

Accompagnement

113

Chant

Accompagnement

119

Chant

Accompagnement

125

Chant

Accompagnement

130

Chant

Accompagnement

135

Chant

Accompagnement

140

Chant

Accompagnement

145

Chant

Accompagnement

151

Chant

Accompagnement

157

Chant

Accompagnement

162

Chant

167

Chant

Accompagnement

172

Chant

Accompagnement

177

Chant

Accompagnement

183

Chant

Accompagnement

189

Chant

Accompagnement

194

Chant

Chant

199

Chant

Accompagnement

204

Chant

Accompagnement

209

Chant

Accompagnement

215

Chant

Accompagnement

Detailed description: This system shows measures 215-220. The Chant part (treble clef) begins with a half note G4, followed by a quarter note A4, a quarter note Bb4, and a quarter rest. The next measure has a half note C5, a quarter note Bb4, and a quarter note A4. The following two measures feature a half note G4 with a dotted quarter note, and a quarter note Bb4. The final measure has a half note G4. The Accompaniment part (bass clef) consists of chords: G2-Bb2-D2 (measures 215-216), G2-Bb2-D2 (measure 217), G2-Bb2-D2 (measure 218), G2-Bb2-D2 (measure 219), and G2-Bb2-D2 (measure 220).

221

Chant

Accompagnement

Detailed description: This system shows measures 221-226. The Chant part (treble clef) starts with a half note G4, a quarter note A4, and a quarter note Bb4. The next measure has a half note C5, a quarter note Bb4, and a quarter note A4. The following two measures feature a half note G4 with a dotted quarter note, and a quarter note Bb4. The final measure has a half note G4. The Accompaniment part (bass clef) consists of chords: G2-Bb2-D2 (measures 221-222), G2-Bb2-D2 (measure 223), G2-Bb2-D2 (measure 224), G2-Bb2-D2 (measure 225), and G2-Bb2-D2 (measure 226).

226

Chant

Detailed description: This system shows measure 226. The Chant part (treble clef) has a half note G4, a quarter note A4, and a quarter note Bb4.

231

Chant

Accompagnement

Detailed description: This system shows measures 231-236. The Chant part (treble clef) starts with a half note G4, a quarter note A4, and a quarter note Bb4. The next measure has a half note C5, a quarter note Bb4, and a quarter note A4. The following two measures feature a half note G4 with a dotted quarter note, and a quarter note Bb4. The final measure has a half note G4. The Accompaniment part (bass clef) has rests for the first two measures, then G2-Bb2-D2 (measures 233-234), G2-Bb2-D2 (measure 235), and G2-Bb2-D2 (measure 236).

236

Chant

Accompagnement

Detailed description: This system shows measures 236-241. The Chant part (treble clef) starts with a half note G4, a quarter note A4, and a quarter note Bb4. The next measure has a half note C5, a quarter note Bb4, and a quarter note A4. The following two measures feature a half note G4 with a dotted quarter note, and a quarter note Bb4. The final measure has a half note G4. The Accompaniment part (bass clef) consists of chords: G2-Bb2-D2 (measures 236-237), G2-Bb2-D2 (measure 238), G2-Bb2-D2 (measure 239), G2-Bb2-D2 (measure 240), and G2-Bb2-D2 (measure 241).

241

Chant

Accompagnement

Detailed description: This system shows measures 241-246. The Chant part (treble clef) starts with a half note G4, a quarter note A4, and a quarter note Bb4. The next measure has a half note C5, a quarter note Bb4, and a quarter note A4. The following two measures feature a half note G4 with a dotted quarter note, and a quarter note Bb4. The final measure has a half note G4. The Accompaniment part (bass clef) consists of chords: G2-Bb2-D2 (measures 241-242), G2-Bb2-D2 (measure 243), G2-Bb2-D2 (measure 244), G2-Bb2-D2 (measure 245), and G2-Bb2-D2 (measure 246).

247

Chant

Accompagnement

Detailed description: This system shows measures 247-252. The Chant part (treble clef) begins with a half note G4, followed by a quarter note A4, a quarter note Bb4, and a quarter rest. The next measure has a half note C5, a quarter note Bb4, and a quarter note A4. The following two measures feature a half note G4 with a dotted quarter note, and a quarter note Bb4. The final measure has a half note G4. The Accompaniment part (bass clef) consists of chords: G2-Bb2-D2 (measures 247-248), G2-Bb2-D2 (measure 249), G2-Bb2-D2 (measure 250), G2-Bb2-D2 (measure 251), and G2-Bb2-D2 (measure 252).

253

Chant

Accompagnement

258

Chant

263

Chant

Accompagnement

268

Chant

Accompagnement

273

Chant

Accompagnement

279

Chant

Accompagnement

284

Chant

Accompagnement

Chansons A Boire - C`Est a Boire

Chant

Chant

7

14

21

27

33

39

46

53

Copyright © 1997 by Thierry Klein
All Rights Reserved

V.S.

59



65



71



78



85



91



97



103



110



117



123

129

135

142

149

155

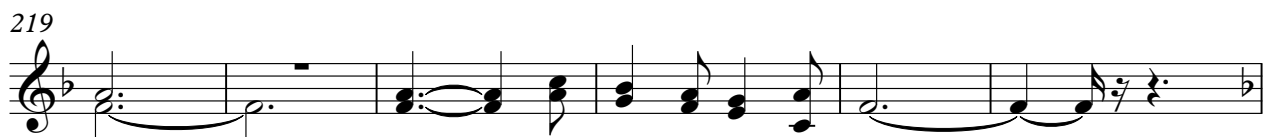
161

167

174

181

V.S.



251

257

263

270

277

283

Chansons A Boire - C`Est a Boire

Accompagnement

Accompagnement

8

8

15

24

32

8

46

55

61

65

8

73

81

89

97

8

112

120

128

8

142

151

160

8

174

183

192

206

215

224

238

247

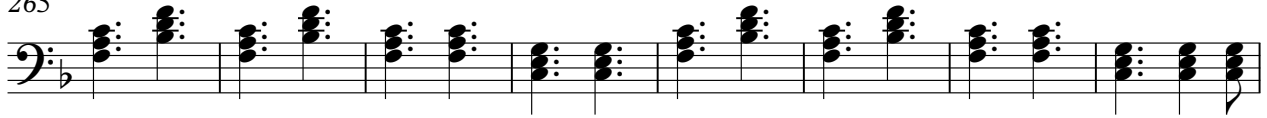
253

257

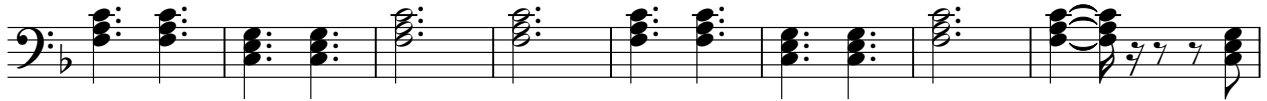
4

Accompagnement

265



273



281

