

# Offspring - The Kids Arent Allright

♩ = 99,000099

Staff-2



Staff-3

3

Staff-2



Staff-3

5

Staff-4-2

Staff-2



Staff-4-2

7

Staff-2

Copyright © 1999 Americana  
All Rights Reserved

2

9

Staff-3

Staff-4

Staff-4-2

Staff-2

Staff-5



12

Staff-3

Staff-4

Staff-4-2

Staff-2

Staff-5

15

Staff-3: Treble clef, guitar-like notation with diamond-shaped flags above notes.

Staff-4-2: Treble clef, guitar-like notation with diamond-shaped flags above notes.

Staff-2: Treble clef, contains a whole rest in the first measure and a chord in the second measure.

Staff-5: Bass clef, contains a whole rest in the first measure and a chord in the second measure.



17

Staff-3: Treble clef, guitar-like notation with diamond-shaped flags above notes.

Staff-4: Treble clef, contains a whole rest in the first measure and a chord in the second measure.

Staff-4-2: Treble clef, guitar-like notation with diamond-shaped flags above notes.

Staff-1: Treble clef, contains a whole rest in the first measure and a chord in the second measure.

Staff-2: Treble clef, contains a whole rest in the first measure and a chord in the second measure.

Staff: Treble clef, contains a whole rest in the first measure and a chord in the second measure.

18

Staff-3

Staff-4-2

Staff-1

Staff-2

Staff



19

Staff-3

Staff-4-2

Staff-1

Staff-2

Staff

20

Staff-3

Staff-4-2

Staff-1

Staff-2

Staff



21

Staff-3

Staff-4

Staff-4-2

Staff-1

Staff-2

Staff

22

Staff-3

Staff-4-2

Staff-1

Staff-2

Staff

Detailed description: This block contains the musical notation for measures 22 and 23. It consists of five staves. Staff-3 (top) has a treble clef and contains a series of eighth notes with stems pointing up, all tied to the previous measure. Staff-4-2 has a treble clef and contains a series of eighth notes with stems pointing up, all tied to the previous measure. Staff-1 has a treble clef and contains a series of eighth notes with stems pointing down, all tied to the previous measure. Staff-2 has a treble clef and contains a series of eighth notes with stems pointing down, all tied to the previous measure. Staff (bottom) has a treble clef and contains a series of eighth notes with stems pointing down, all tied to the previous measure. The key signature is one sharp (F#).



23

Staff-3

Staff-4-2

Staff-1

Staff-2

Staff

Detailed description: This block contains the musical notation for measures 23 and 24. It consists of five staves. Staff-3 (top) has a treble clef and contains a series of eighth notes with stems pointing up, all tied to the previous measure. Staff-4-2 has a treble clef and contains a series of eighth notes with stems pointing up, all tied to the previous measure. Staff-1 has a treble clef and contains a series of eighth notes with stems pointing down, all tied to the previous measure. Staff-2 has a treble clef and contains a series of eighth notes with stems pointing down, all tied to the previous measure. Staff (bottom) has a treble clef and contains a series of eighth notes with stems pointing down, all tied to the previous measure. The key signature is one sharp (F#).

24

Staff-3

Staff-4

Staff-4-2

Staff-1

Staff-2

Detailed description: This musical system covers measures 24 and 25. Staff-3 (top) contains a series of eighth notes with stems pointing up, followed by a whole rest in measure 25. Staff-4 (second from top) contains a series of eighth notes with stems pointing down, starting in measure 25. Staff-4-2 (third from top) contains eighth notes with stems pointing down in measure 24, and eighth notes with stems pointing up in measure 25. Staff-1 (fourth from top) contains eighth notes with stems pointing down in measure 24, and eighth notes with stems pointing up in measure 25. Staff-2 (bottom) contains eighth notes with stems pointing down in measure 24, and eighth notes with stems pointing up in measure 25. The key signature changes from one sharp (F#) to one flat (Bb) between measures 24 and 25.



26

Staff-4

Staff-4-2

Staff-1

Staff-2

Detailed description: This musical system covers measures 26 and 27. Staff-4 (top) contains eighth notes with stems pointing down in measure 26, and eighth notes with stems pointing up in measure 27. Staff-4-2 (second from top) contains eighth notes with stems pointing down in measure 26, and eighth notes with stems pointing up in measure 27. Staff-1 (third from top) contains eighth notes with stems pointing down in measure 26, and eighth notes with stems pointing up in measure 27. Staff-2 (bottom) contains eighth notes with stems pointing down in measure 26, and eighth notes with stems pointing up in measure 27. The key signature remains one flat (Bb).





32

Staff-3: Treble clef, contains rests in measure 32 and a series of eighth notes with flags in measure 33.

Staff-4: Treble clef, contains a continuous eighth-note melody in measure 32.

Staff-4-2: Treble clef, contains a continuous eighth-note melody in measure 32.

Staff-1: Treble clef, contains a single note with a sharp sign in measure 32 and a quarter note with a sharp sign in measure 33.

Staff-2: Treble clef, contains a whole note chord in measure 32 and a whole note chord in measure 33.

Staff-5: Bass clef, contains a whole note chord in measure 32 and a whole note chord in measure 33.



34

Staff-3: Treble clef, contains a continuous eighth-note melody with flags in measures 34, 35, and 36.

Staff-4-2: Treble clef, contains a continuous eighth-note melody in measures 34, 35, and 36.

Staff-2: Treble clef, contains a whole note chord in measure 34, a whole note chord in measure 35, and a whole note chord in measure 36.

Staff-5: Bass clef, contains a whole note chord in measure 34, a whole note chord in measure 35, and a whole note chord in measure 36.

37

Staff-3

Staff-4

Staff-4-2

Staff-2

Staff-5



40

Staff-3

Staff-4

Staff-4-2

Staff-1

Staff-2

Staff-5

Staff

42

Staff-3

Staff-4-2

Staff-1

Staff-2

Staff



43

Staff-3

Staff-4-2

Staff-1

Staff-2

Staff

44

Staff-3: Treble clef, contains a whole rest.

Staff-4-2: Treble clef, contains a whole rest.

Staff-1: Treble clef, contains a whole rest.

Staff-2: Treble clef, contains a whole rest.

Staff: Treble clef, contains a whole rest.

Detailed description: This system contains measures 44 and 45. Staff-3 has a whole rest. Staff-4-2 has a whole rest. Staff-1 has a whole rest. Staff-2 has a whole rest. Staff has a whole rest.



45

Staff-3: Treble clef, contains a whole rest.

Staff-4: Treble clef, contains a whole rest.

Staff-4-2: Treble clef, contains a whole rest.

Staff-1: Treble clef, contains a whole rest.

Staff-2: Treble clef, contains a whole rest.

Staff: Treble clef, contains a whole rest.

Detailed description: This system contains measures 46 and 47. Staff-3 has a whole rest. Staff-4 has a whole rest. Staff-4-2 has a whole rest. Staff-1 has a whole rest. Staff-2 has a whole rest. Staff has a whole rest.

46

Staff-3

Staff-4-2

Staff-1

Staff-2

Staff



47

Staff-3

Staff-4-2

Staff-1

Staff-2

Staff

48

Staff-3

Staff-4

Staff-4-2

Staff-1

Staff-2

Staff



50

Staff-4

Staff-4-2

Staff-1

Staff-2

Staff

52

Staff-4

Staff-4-2

Staff-1

Staff-2

Staff

Detailed description: This musical system covers measures 52 and 53. Staff-4 (top) features a continuous eighth-note accompaniment. Staff-4-2 contains a melody of eighth notes. Staff-1 has a sparse melody with notes including a sharp and a flat. Staff-2 shows two chords: a B-flat major chord in the first measure and a B-flat minor chord in the second. Staff (bottom) has a whole rest in the first measure and a melodic phrase in the second.



54

Staff-4

Staff-4-2

Staff-1

Staff-2

Staff

Detailed description: This musical system covers measures 54 and 55. Staff-4 (top) features a continuous eighth-note accompaniment. Staff-4-2 contains a melody of eighth notes. Staff-1 has a sparse melody with notes including a flat and a sharp. Staff-2 shows two chords: a D major chord in the first measure and a D major chord with a sharp in the second. Staff (bottom) has a whole rest in the first measure and a melodic phrase in the second.

56

Staff-3: Guitar tablature with 'x' marks above the staff. Measure 56 has a whole rest, measure 57 has a full bar of 'x' marks.

Staff-4: Treble clef, eighth-note patterns. Measure 56 has a whole rest, measure 57 has a full bar of eighth notes.

Staff-4-2: Treble clef, eighth-note patterns. Measure 56 has a whole rest, measure 57 has a full bar of eighth notes.

Staff-1: Treble clef, melodic line. Measure 56 has a whole note with a sharp sign, measure 57 has a whole rest.

Staff-2: Treble clef, chordal accompaniment. Measure 56 has a whole rest, measure 57 has a full bar of chords.

Staff-5: Bass clef, bass line. Measure 56 has a whole rest, measure 57 has a full bar of notes.



58

Staff-3: Guitar tablature with 'x' marks above the staff. Measure 58 has a full bar of 'x' marks, measure 59 has a full bar of 'x' marks.

Staff-4-2: Treble clef, eighth-note patterns. Measure 58 has a full bar of eighth notes, measure 59 has a full bar of eighth notes.

Staff-2: Treble clef, chordal accompaniment. Measure 58 has a whole rest, measure 59 has a full bar of chords.

Staff-6: Treble clef, chordal accompaniment. Measure 58 has a whole rest, measure 59 has a full bar of chords.

Staff-5: Bass clef, bass line. Measure 58 has a full bar of notes, measure 59 has a full bar of notes.



60

Staff-3: Guitar tablature with 'x' marks above the staff. Measure 60 has 14 'x' marks, and measure 61 has 15 'x' marks.

Staff-4: Empty staff with a bar line in measure 61.

Staff-4-2: Rhythmic notation with eighth and sixteenth notes. Measure 60 has a quarter note, eighth notes, and a sixteenth note. Measure 61 has a quarter note, eighth notes, and a sixteenth note.

Staff-2: Treble clef with a key signature of one flat. Measure 60 has a half note, and measure 61 has a half note.

Staff-6: Treble clef with a key signature of one flat. Measure 60 has a half note, and measure 61 has a half note.



62

Staff-3: Guitar tablature with 'x' marks above the staff. Measure 62 has 14 'x' marks, and measure 63 has 15 'x' marks.

Staff-4-2: Rhythmic notation with eighth and sixteenth notes. Measure 62 has a quarter note, eighth notes, and a sixteenth note. Measure 63 has a quarter note, eighth notes, and a sixteenth note.

Staff-2: Treble clef with a key signature of one flat. Measure 62 has a half note, and measure 63 has a half note.

Staff-6: Treble clef with a key signature of one flat. Measure 62 has a half note, and measure 63 has a half note.

64

Staff-3

Staff-4

Staff-4-2

Staff-1

Staff-2

Staff-6

Staff

The image shows a musical score for guitar, page 18, starting at measure 64. The score is arranged in six staves:

- Staff-3:** Contains guitar tablature with 'x' marks above the staff, indicating fretted notes.
- Staff-4:** Contains a single note on the fourth string, first fret.
- Staff-4-2:** Contains a melodic line with eighth and sixteenth notes.
- Staff-1:** Contains a bass line with notes on the first and second strings.
- Staff-2:** Contains a chord progression with a key signature change to one flat.
- Staff-6:** Contains a melodic line with notes on the first and second strings.
- Staff:** Contains a bass line with notes on the first and second strings.

66

Staff-3

Staff-4-2

Staff-1

Staff-2

Staff-6

Staff

Detailed description of the musical score: The score consists of six staves. Staff 3 (top) is a treble clef with a key signature of one flat (B-flat), containing a series of eighth notes with stems pointing up. Staff 4-2 is a treble clef with a key signature of one flat, containing a series of eighth notes with stems pointing up. Staff 1 is a treble clef with a key signature of one flat, containing a series of eighth notes with stems pointing up. Staff 2 is a treble clef with a key signature of one flat, containing a series of eighth notes with stems pointing up. Staff 6 is a treble clef with a key signature of one flat, containing a series of eighth notes with stems pointing up. Staff (bottom) is a treble clef with a key signature of one flat, containing a series of eighth notes with stems pointing up.

68

Staff-3

Staff-4

Staff-4-2

Staff-1

Staff-2

Staff-6

Staff

71

Staff-3

Staff-4-2

Staff-1

Staff-2

Staff-6

Staff

Detailed description: This block contains musical notation for measures 71 and 72. It consists of six staves. Staff-3 (top) has a treble clef and a key signature of one sharp (F#), with a series of eighth notes. Staff-4-2 has a treble clef and a key signature of one sharp, with eighth notes. Staff-1 has a treble clef and a key signature of one sharp, with a half note followed by a quarter note and a quarter rest. Staff-2 has a treble clef and a key signature of one sharp, with a whole note chord. Staff-6 has a treble clef and a key signature of one sharp, with eighth notes. Staff (bottom) has a treble clef and a key signature of one sharp, with a quarter note, a quarter note, and a quarter rest.



73

Staff-4-2

Staff-2

Staff-6

Detailed description: This block contains musical notation for measures 73 and 74. It consists of three staves. Staff-4-2 (top) has a treble clef and a key signature of one sharp, with eighth notes. Staff-2 has a treble clef and a key signature of one sharp, with a whole note chord. Staff-6 has a treble clef and a key signature of one sharp, with eighth notes.

# Offspring - The Kids Arent Allright

Staff-3

♩ = 99,000099

3

2

9

13

17

21

25

8

36

40

44

47

8

Detailed description: This block contains the musical notation for Staff-3. It begins with a tempo marking of a quarter note equal to 99,000099. The staff is in 4/4 time. The first measure is a whole rest, followed by a measure with a quarter rest and a quarter note. The subsequent measures contain eighth notes, with a double bar line and an asterisk above the staff at measure 11. Measure 12 is a whole rest. Measures 13-24 are eighth notes. Measure 25 is a whole rest, followed by eighth notes in measures 26-35. Measure 36 is a whole rest, followed by eighth notes in measures 37-39. Measure 40 is a whole rest, followed by eighth notes in measures 41-43. Measure 44 is a whole rest, followed by eighth notes in measures 45-46. Measure 47 is a whole rest, followed by eighth notes in measures 48-50. Measure 51 is a whole rest.

Copyright © 1999 Americana  
All Rights Reserved

2

Staff-3

57



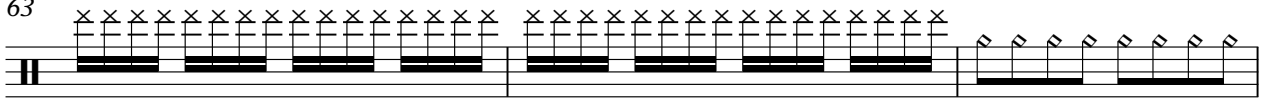
59



61



63



66



70



# Offspring - The Kids Arent Allright

Staff-4

♩ = 99,000099

8  $\text{\textcircled{8}}$  3  $\text{\textcircled{3}}$  3  $\text{\textcircled{3}}$

18 3  $\text{\textcircled{3}}$  3

26

28

30

32  $\text{\textcircled{3}}$  3  $\text{\textcircled{3}}$

38 3  $\text{\textcircled{3}}$  3  $\text{\textcircled{3}}$  3

Copyright © 1999 Americana  
All Rights Reserved



2

Staff-4

49



51



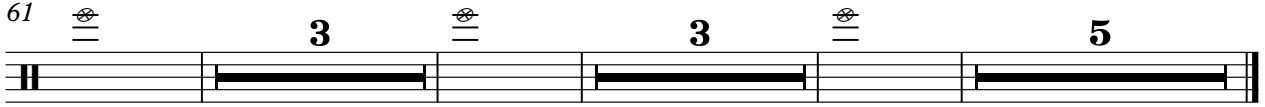
53



55



61



# Offspring - The Kids Arent Allright

Staff-4-2

♩ = 99,000099

4



Copyright © 1999 Americana  
All Rights Reserved

V.S.

35



38



41



44



47



50



53



56



59



62



65



68



71



73



# Offspring - The Kids Arent Allright

Staff-1

♩ = 99,000099

**16**

19

21

24

29 **8**

41

44

47

51

55 **7**

Copyright © 1999 Americana  
All Rights Reserved





34

41

43

45

47

50

58

66

71

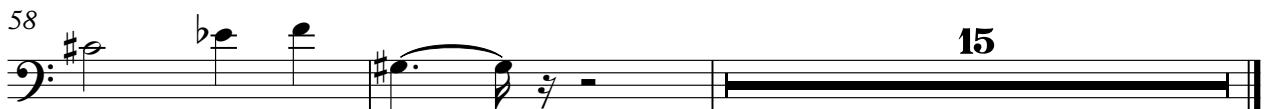




# Offspring - The Kids Arent Allright

Staff-5

♩ = 99,000099



Copyright © 1999 Americana  
All Rights Reserved

