

One Republic - Mercy


♩ = 120,000000


Percussion 

Jazz Guitar 

Jazz Guitar 

Jazz Guitar 

J. Gtr. 

J. Gtr. 

J. Gtr. 

J. Gtr. 

Perc. 

J. Gtr. 

J. Gtr. 

J. Gtr. 

2

15

Perc.

J. Gtr.

J. Gtr.

J. Gtr.

18

Perc.

J. Gtr.

J. Gtr.

J. Gtr.

21

Perc.

J. Gtr.

23

Perc.

J. Gtr.

J. Gtr.

26

Perc.

J. Gtr.

J. Gtr.

Detailed description: This system covers measures 26, 27, and 28. The percussion part (Perc.) features a rhythmic pattern of eighth notes with asterisks above each note, indicating a specific sound or effect. The first guitar part (J. Gtr.) consists of chords in the treble clef, with a key signature of one sharp (F#) and a change to one flat (Bb) in measure 27. The second guitar part (J. Gtr.) shows the bass line in the bass clef, primarily using eighth notes.

29

Perc.

J. Gtr.

J. Gtr.

Detailed description: This system covers measures 29, 30, and 31. The percussion part continues with the same rhythmic pattern and asterisks. The first guitar part (J. Gtr.) maintains the chordal structure from the previous system. The second guitar part (J. Gtr.) continues with the bass line, showing some chromatic movement.

32

Perc.

J. Gtr.

J. Gtr.

Detailed description: This system covers measures 32, 33, and 34. The percussion part remains consistent. The first guitar part (J. Gtr.) continues with chords, including a change in measure 34. The second guitar part (J. Gtr.) continues with the bass line.

35

Perc.

J. Gtr.

J. Gtr.

Detailed description: This system covers measures 35, 36, and 37. The percussion part continues with the rhythmic pattern and asterisks. The first guitar part (J. Gtr.) continues with chords, including a change in measure 36. The second guitar part (J. Gtr.) continues with the bass line.

4

38

Perc.

J. Gtr.

J. Gtr.

41

Perc.

J. Gtr.

J. Gtr.

J. Gtr.

44

Perc.

J. Gtr.

J. Gtr.

J. Gtr.

47



Perc.

J. Gtr.

J. Gtr.

J. Gtr.

Detailed description: This system covers measures 47, 48, and 49. The Percussion part (top staff) features a consistent rhythmic pattern of eighth notes with upward-pointing stems. The first J. Gtr. part (middle staff) is a melodic line with a key signature of one sharp (F#) and a key signature change to one flat (Bb) in measure 48. The second J. Gtr. part (bottom staff) consists of chords, with a 'y' symbol indicating a natural harmonium in measures 48 and 49.

50



Perc.

J. Gtr.

J. Gtr.

J. Gtr.

Detailed description: This system covers measures 50, 51, and 52. The Percussion part continues with the same eighth-note pattern. The first J. Gtr. part (middle staff) continues the melodic line with a key signature change to one flat (Bb) in measure 51. The second J. Gtr. part (bottom staff) continues with chords, including natural harmoniums marked with 'y' in measures 51 and 52.

53



Perc.

J. Gtr.

J. Gtr.

J. Gtr.

Detailed description: This system covers measures 53, 54, and 55. The Percussion part remains consistent. The first J. Gtr. part (middle staff) continues the melodic line with a key signature change to one sharp (F#) in measure 54. The second J. Gtr. part (bottom staff) continues with chords and natural harmoniums marked with 'y' in measures 54 and 55.

56

Perc.

J. Gtr.

J. Gtr.

J. Gtr.

59

Perc.

J. Gtr.

61

Perc.

J. Gtr.

J. Gtr.

64

Perc.

J. Gtr.

J. Gtr.

67 7

70 7

73 7

76 7

79

Perc. 

J. Gtr. 

J. Gtr. 

82

Perc. 

J. Gtr. 

J. Gtr. 

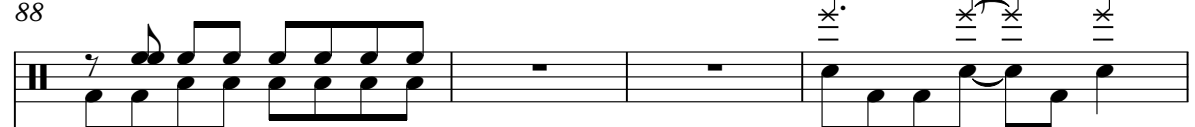
85

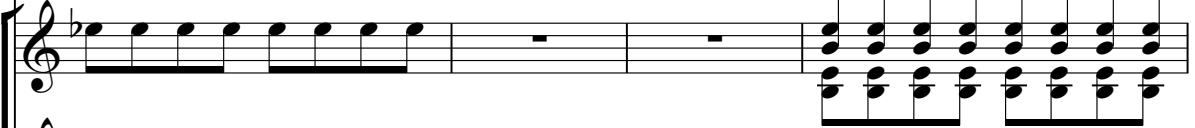
Perc. 

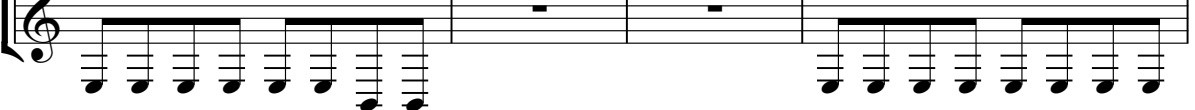
J. Gtr. 

J. Gtr. 

88

Perc. 

J. Gtr. 

J. Gtr. 

92

Perc. J. Gtr. J. Gtr.

This system contains measures 92, 93, and 94. The Percussion part features a rhythmic pattern of eighth notes with asterisks above the notes. The upper guitar part consists of a series of chords, with a key signature change from one sharp to one flat between measures 93 and 94. The lower guitar part provides a bass line with eighth notes.

95

Perc. J. Gtr. J. Gtr.

This system contains measures 95, 96, and 97. The Percussion part continues with the same rhythmic pattern. The upper guitar part continues with chords, maintaining the one-flat key signature. The lower guitar part continues with eighth notes.

98

Perc. J. Gtr. J. Gtr.

This system contains measures 98, 99, and 100. The Percussion part continues with the same rhythmic pattern. The upper guitar part continues with chords, maintaining the one-flat key signature. The lower guitar part continues with eighth notes.

101

Perc. J. Gtr. J. Gtr.

This system contains measures 101, 102, and 103. The Percussion part continues with the same rhythmic pattern. The upper guitar part continues with chords, maintaining the one-flat key signature. The lower guitar part continues with eighth notes.

10

103

Perc.

J. Gtr.

J. Gtr.

The image shows a musical score for three instruments: Percussion (Perc.), a first guitar (J. Gtr.), and a second guitar (J. Gtr.). The Percussion part is written on a single staff with a double bar line at the beginning. It features a sequence of notes with stems pointing downwards, each accompanied by a downward-pointing arrow and a double underline, indicating a specific percussive technique. The first guitar part is written on a standard six-string guitar staff with a treble clef. It consists of a series of chords, with a key signature change to one sharp (F#) indicated by a sharp sign on the F line. The second guitar part is also on a standard six-string guitar staff with a treble clef, featuring a sequence of notes with stems pointing downwards, similar to the Percussion part.

One Republic - Mercy

Percussion

♩ = 120,000000
12

16

20

24

28

32

36

3

43

Musical staff for measure 43, featuring a rhythmic pattern of eighth notes and quarter notes with upward-pointing stems.

47

Musical staff for measure 47, continuing the rhythmic pattern of eighth notes and quarter notes with upward-pointing stems.

51

Musical staff for measure 51, continuing the rhythmic pattern of eighth notes and quarter notes with upward-pointing stems.

55

Musical staff for measure 55, continuing the rhythmic pattern of eighth notes and quarter notes with upward-pointing stems.

59

Musical staff for measure 59, starting with a double bar line and a key signature change (one flat), followed by a triplet of eighth notes and a series of eighth notes with asterisks above them.

63

Musical staff for measure 63, featuring a series of eighth notes with asterisks above them.

67

Musical staff for measure 67, featuring a series of eighth notes with asterisks above them.

71

Musical staff for measure 71, featuring a series of eighth notes with asterisks above them.

75

Musical staff for measure 75, featuring a series of eighth notes with asterisks above them, followed by a change in the rhythmic pattern.

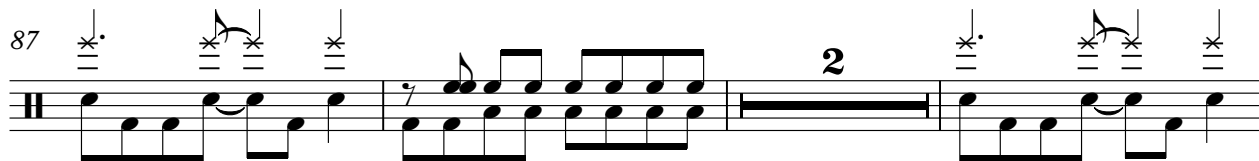
79

Musical staff for measure 79, featuring a series of eighth notes with asterisks above them, followed by a change in the rhythmic pattern.

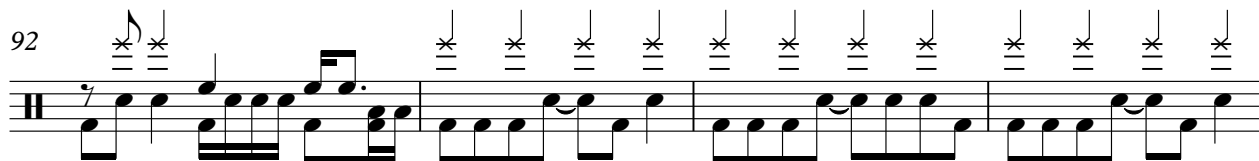
83



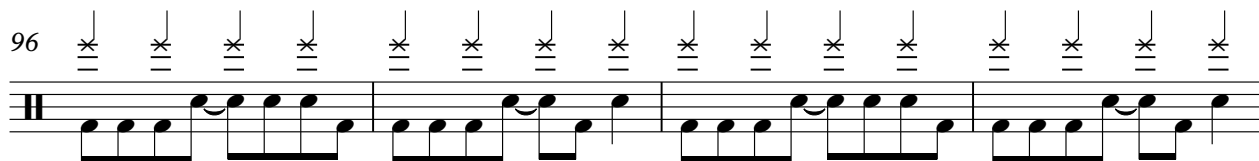
87



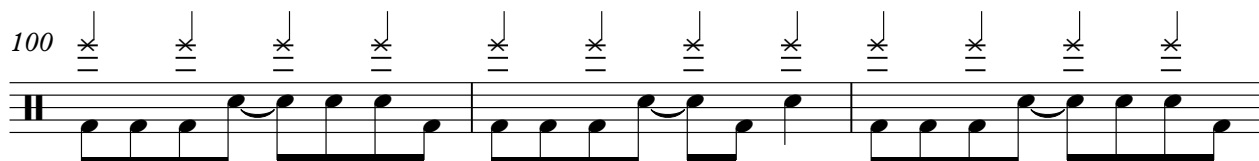
92



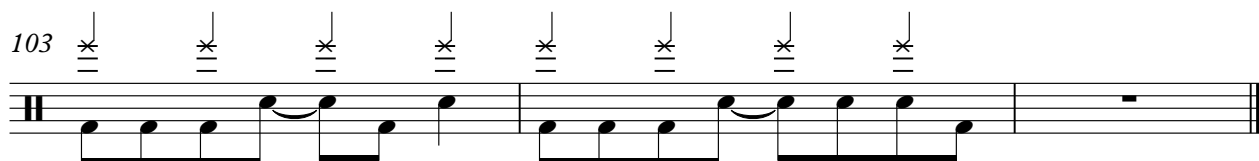
96



100



103



♩ = 120,000000

5

9

13

17

21

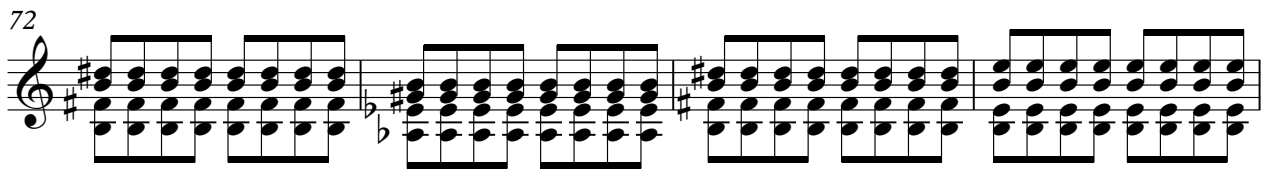
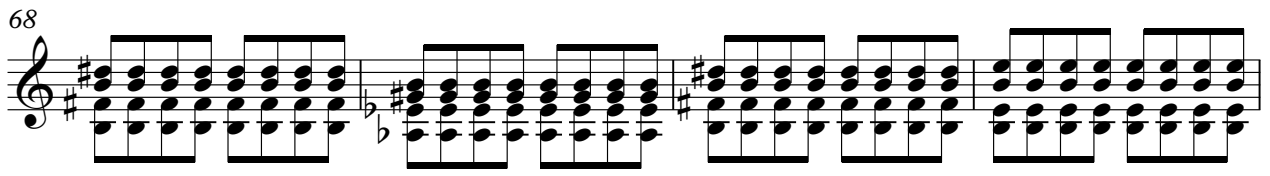
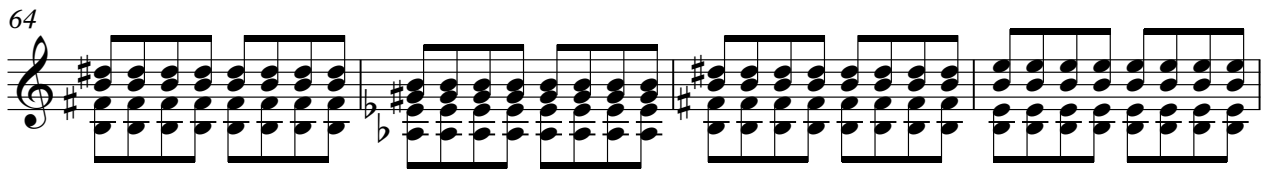
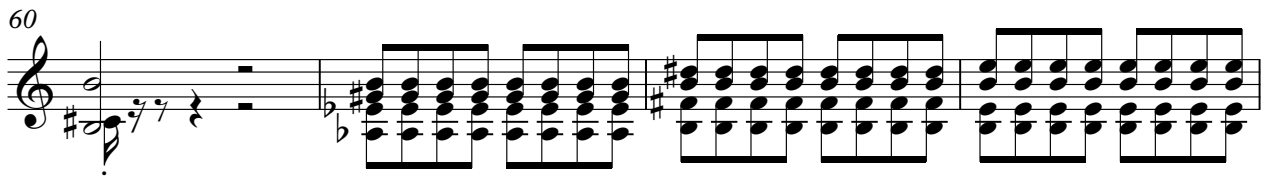
24

28

32

36

V.S.



80



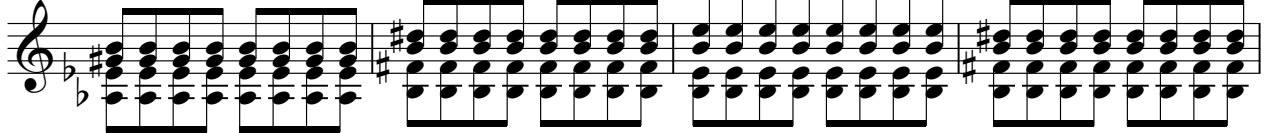
84



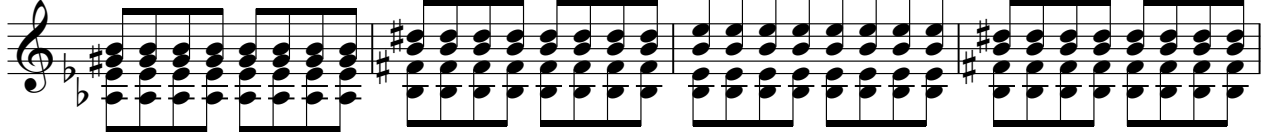
88



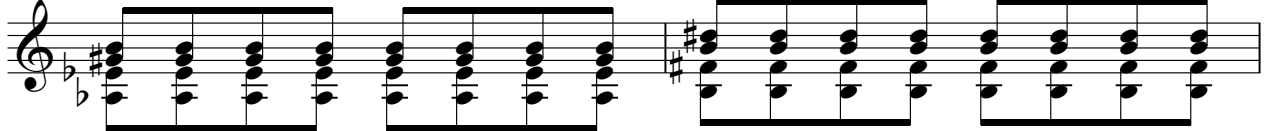
93



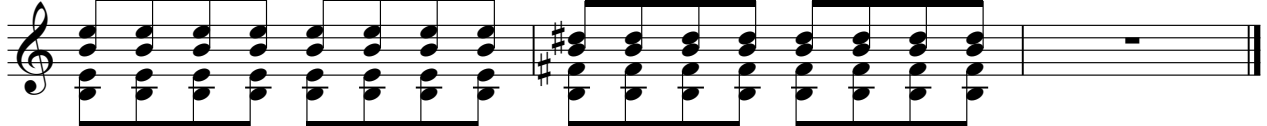
97



101



103



♩ = 120,000000

4

8

12

16

20

25

29

33

37

41

V.S.

This image displays a page of jazz guitar sheet music, numbered 2. The title "Jazz Guitar" is centered at the top. The music is written in treble clef with a key signature of one sharp (F#). It consists of ten systems of four measures each, starting at measure 45 and ending at measure 82. The notation includes various rhythmic patterns, primarily eighth and sixteenth notes, with some triplet markings. A double bar line with a "2" above it appears at measure 57, indicating a second ending. The music concludes with a final sharp sign at the end of the eighth system.

86

2

91

95

99

102

♩ = 120,000000

12

16

20

45

49

53

57

47