

# Chick Corea - Is Care Of Me

♩ = 110,000916

DRUMS

E.PIANO 1

Measures 1-3 of the first system. The drum part shows a steady 4/4 beat with a snare on the 2nd and 4th beats and a hi-hat on the 1st and 3rd beats. The electric piano part features a bass line with eighth-note patterns and a melodic line with quarter notes.

4

DRUMS

NYLON GTR

E.PIANO 1

A.PIANO 1

Measures 4-6 of the second system. The drum part continues with the same pattern. The nylon guitar part has a melodic line with eighth notes. The electric piano part continues with its bass and melodic lines. The acoustic piano part has a complex chordal accompaniment with many beamed notes.

7

DRUMS

E.PIANO 1

A.PIANO 1

Measures 7-9 of the third system. The drum part continues with the same pattern. The electric piano part continues with its bass and melodic lines. The acoustic piano part has a complex chordal accompaniment with many beamed notes.

10

DRUMS

NYLON GTR

E.PIANO 1

A.PIANO 1

12

DRUMS

NYLON GTR

E.PIANO 1

A.PIANO 1

14

DRUMS

NYLON GTR

E.PIANO 1

A.PIANO 1

16

DRUMS

NYLON GTR

E.PIANO 1

A.PIANO 1

18

DRUMS

NYLON GTR

E.PIANO 1

A.PIANO 1

20

DRUMS

NYLON GTR

E.PIANO 1

A.PIANO 1

22

DRUMS

NYLON GTR

E.PIANO 1

A.PIANO 1

25

DRUMS

NYLON GTR

E.PIANO 1

A.PIANO 1

27

DRUMS

NYLON GTR

E.PIANO 1

A.PIANO 1

29

DRUMS

NYLON GTR

E.PIANO 1

A.PIANO 1

31

DRUMS

NYLON GTR

E.PIANO 1

A.PIANO 1

33

DRUMS

NYLON GTR

E.PIANO 1

A.PIANO 1

35

DRUMS

NYLON GTR

E.PIANO 1

37

DRUMS

NYLON GTR

E.PIANO 1

A.PIANO 1

39

DRUMS

NYLON GTR

E.PIANO 1

A.PIANO 1

41

DRUMS

NYLON GTR

E.PIANO 1

44

DRUMS

NYLON GTR

E.PIANO 1

A.PIANO 1

46

DRUMS

NYLON GTR

E.PIANO 1

A.PIANO 1

49

DRUMS

NYLON GTR

E.PIANO 1

A.PIANO 1

51

DRUMS

NYLON GTR

E.PIANO 1

A.PIANO 1

53

DRUMS

E.PIANO 1

A.PIANO 1



55

DRUMS

NYLON GTR

E.PIANO 1

A.PIANO 1

57

DRUMS

NYLON GTR

E.PIANO 1

A.PIANO 1

59

DRUMS

NYLON GTR

E.PIANO 1

A.PIANO 1

61

DRUMS

NYLON GTR

E.PIANO 1

A.PIANO 1

64

DRUMS

NYLON GTR

E.PIANO 1

A.PIANO 1

66

DRUMS

NYLON GTR

E.PIANO 1

A.PIANO 1

68

DRUMS

NYLON GTR

E.PIANO 1

A.PIANO 1

70

DRUMS

NYLON GTR

E.PIANO 1

A.PIANO 1

72

DRUMS

NYLON GTR

E.PIANO 1

A.PIANO 1

75

DRUMS

NYLON GTR

E.PIANO 1

78

DRUMS

NYLON GTR

E.PIANO 1

A.PIANO 1

80

DRUMS

NYLON GTR

E.PIANO 1

A.PIANO 1



DRUMS

Chick Corea - Is Care Of Me

♩ = 110,000916

4/4

Measures 1-6: The drum part features a consistent pattern of eighth notes. The bass drum plays a steady eighth-note pulse. The snare drum plays eighth notes on the 2nd and 4th beats of each measure. The hi-hat plays eighth notes on the 1st and 3rd beats. The cymbal plays eighth notes on the 2nd and 4th beats.

7

Measures 7-11: Continuation of the drum pattern from measures 1-6.

12

Measures 12-16: Continuation of the drum pattern from measures 1-6.

17

Measures 17-21: Continuation of the drum pattern from measures 1-6.

22

Measures 22-26: Continuation of the drum pattern from measures 1-6.

27

Measures 27-31: Continuation of the drum pattern from measures 1-6.

32

Measures 32-36: Continuation of the drum pattern from measures 1-6.

37

Measures 37-41: Continuation of the drum pattern from measures 1-6.

42

Measures 42-46: Continuation of the drum pattern from measures 1-6.

47

Measures 47-51: Continuation of the drum pattern from measures 1-6.

V.S.

52

Drum notation for measures 52-56. The notation is on a five-line staff with a double bar line at the beginning. It features a consistent rhythmic pattern: a snare drum (represented by an 'x' on the second line) followed by a hi-hat (represented by a diamond on the third line) and a bass drum (represented by a solid black oval on the first line). The pattern repeats every two measures, with the second measure of each pair containing an accent mark (a triangle) over the bass drum.

57

Drum notation for measures 57-61. The notation is on a five-line staff with a double bar line at the beginning. It features a consistent rhythmic pattern: a snare drum (represented by an 'x' on the second line) followed by a hi-hat (represented by a diamond on the third line) and a bass drum (represented by a solid black oval on the first line). The pattern repeats every two measures, with the second measure of each pair containing an accent mark (a triangle) over the bass drum.

62

Drum notation for measures 62-66. The notation is on a five-line staff with a double bar line at the beginning. It features a consistent rhythmic pattern: a snare drum (represented by an 'x' on the second line) followed by a hi-hat (represented by a diamond on the third line) and a bass drum (represented by a solid black oval on the first line). The pattern repeats every two measures, with the second measure of each pair containing an accent mark (a triangle) over the bass drum.

67

Drum notation for measures 67-71. The notation is on a five-line staff with a double bar line at the beginning. It features a consistent rhythmic pattern: a snare drum (represented by an 'x' on the second line) followed by a hi-hat (represented by a diamond on the third line) and a bass drum (represented by a solid black oval on the first line). The pattern repeats every two measures, with the second measure of each pair containing an accent mark (a triangle) over the bass drum.

72

Drum notation for measures 72-76. The notation is on a five-line staff with a double bar line at the beginning. It features a consistent rhythmic pattern: a snare drum (represented by an 'x' on the second line) followed by a hi-hat (represented by a diamond on the third line) and a bass drum (represented by a solid black oval on the first line). The pattern repeats every two measures, with the second measure of each pair containing an accent mark (a triangle) over the bass drum.

77

Drum notation for measures 77-81. The notation is on a five-line staff with a double bar line at the beginning. It features a consistent rhythmic pattern: a snare drum (represented by an 'x' on the second line) followed by a hi-hat (represented by a diamond on the third line) and a bass drum (represented by a solid black oval on the first line). The pattern repeats every two measures, with the second measure of each pair containing an accent mark (a triangle) over the bass drum.

82

Drum notation for measures 82-85. The notation is on a five-line staff with a double bar line at the beginning. It features a consistent rhythmic pattern: a snare drum (represented by an 'x' on the second line) followed by a hi-hat (represented by a diamond on the third line) and a bass drum (represented by a solid black oval on the first line). The pattern repeats every two measures, with the second measure of each pair containing an accent mark (a triangle) over the bass drum.

86

Drum notation for measures 86-89. The notation is on a five-line staff with a double bar line at the beginning. It features a consistent rhythmic pattern: a snare drum (represented by an 'x' on the second line) followed by a hi-hat (represented by a diamond on the third line) and a bass drum (represented by a solid black oval on the first line). The pattern repeats every two measures, with the second measure of each pair containing an accent mark (a triangle) over the bass drum. The notation ends with a double bar line.

NYLON GTR

Chick Corea - Is Care Of Me

♩ = 110,000916

3 3

11

15

19

23

28

32

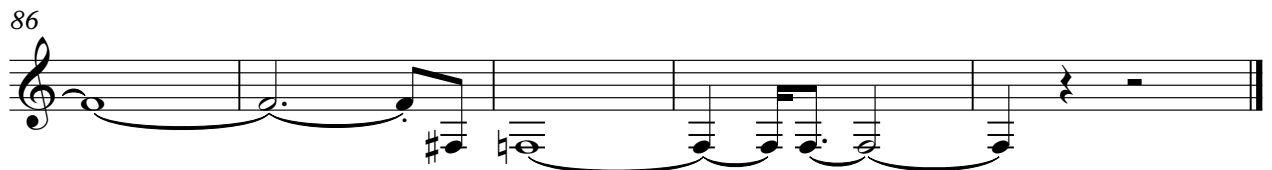
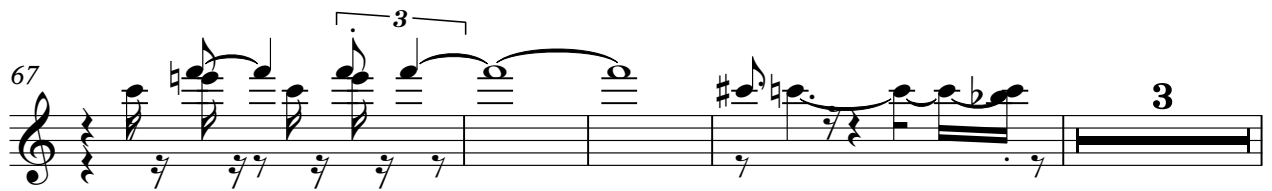
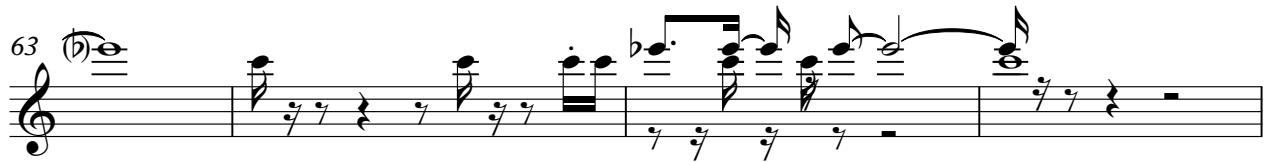
37

41

46

V.S.









81



85



88



# Chick Corea - Is Care Of Me

## A.PIANO 1

♩ = 110,000916

4

8

12

16

20

24

28

32

3

39

4

46

50



54



58



63



67



71



75

