

Chris - We Wish You A Merry Christmas

0.0"
1.1.00
We Wish You A Merry Christmas

= 83,999969

Recorder

Musical notation for the Recorder part in the first system, starting with a rest followed by a series of eighth and sixteenth notes.

Guitar

Musical notation for the Guitar part in the first system, featuring a rest followed by chords and single notes.

Bass

Musical notation for the Bass part in the first system, showing a rest followed by a few notes.

Violin

Musical notation for the Violin part in the first system, mirroring the Recorder part with a rest followed by eighth and sixteenth notes.

5

Recorder

Musical notation for the Recorder part in the second system, continuing the melodic line.

Guitar

Musical notation for the Guitar part in the second system, featuring chords and single notes.

Bass

Musical notation for the Bass part in the second system, showing a few notes.

Violin

Musical notation for the Violin part in the second system, mirroring the Recorder part.

8

Recorder

Guitar

Bass

Violin

Detailed description: This system covers measures 8, 9, and 10. The Recorder and Violin parts are identical, featuring a melodic line of eighth notes with frequent rests. The Guitar part consists of a series of chords, some with a slash indicating a specific fingering or technique. The Bass part provides a simple harmonic accompaniment with single notes and rests.

11

Recorder

Guitar

Bass

Violin

Detailed description: This system covers measures 11, 12, and 13. The Recorder and Violin parts continue the melodic line with eighth notes. The Guitar part features a mix of chords and single notes, including some with a slash. The Bass part continues with a simple accompaniment of single notes and rests.

15

Recorder

Guitar

Bass

Violin

Detailed description: This system covers measures 15, 16, and 17. The Recorder and Violin parts continue the melodic line with eighth notes. The Guitar part features a mix of chords and single notes, including some with a slash. The Bass part continues with a simple accompaniment of single notes and rests.

18

Recorder

Guitar

Bass

Violin

Detailed description: This system covers measures 18, 19, and 20. The Recorder and Violin parts are identical, featuring a melodic line with eighth notes and slurs. The Guitar part consists of chords and single notes in the treble clef, while the Bass part provides a simple harmonic accompaniment in the bass clef.

21

Recorder

Guitar

Bass

Violin

Detailed description: This system covers measures 21, 22, and 23. The Recorder and Violin parts continue the melodic line with eighth notes and slurs. The Guitar part features more complex chordal structures and single notes, while the Bass part maintains a steady accompaniment.

25

Recorder

Guitar

Bass

Violin

Detailed description: This system covers measures 25, 26, and 27. The Recorder and Violin parts play a melodic line with eighth notes and slurs. The Guitar part includes chords and single notes, and the Bass part provides a consistent accompaniment.

28

Recorder

Guitar

Bass

Violin

31

Recorder

Guitar

Bass

Violin

34

Recorder

Guitar

Bass

Violin

37
Recorder



Recorder staff with treble clef. The music consists of a melodic line of eighth notes: G4, A4, B4, C5, B4, A4, G4, F4, E4, D4, C4. The staff ends with a double bar line.

Guitar



Guitar staff with treble clef. The music consists of chordal accompaniment: a half note chord (G4, B4, D5), a quarter note chord (G4, B4, D5), a quarter note chord (G4, B4, D5), and a quarter note chord (G4, B4, D5). The staff ends with a double bar line.

Bass



Bass staff with bass clef. The music consists of a simple bass line: a half note G2, a quarter note A2, a quarter note B2, and a quarter note C3. The staff ends with a double bar line.

Violin



Violin staff with treble clef. The music consists of a melodic line of eighth notes: G4, A4, B4, C5, B4, A4, G4, F4, E4, D4, C4. The staff ends with a double bar line.

Chris - We Wish You A Merry Xmas

Recorder

$\text{♩} = 83,999969$

5

8

12

16

19

22

27

30

33

Detailed description: The image shows a musical score for a recorder part. It begins with a treble clef, a 6/8 time signature, and a tempo marking of quarter note = 83,999969. The score consists of ten staves of music. The first staff starts with a whole rest. The second staff is marked with a '5' above the first measure. The third staff is marked with an '8' above the first measure. The fourth staff is marked with a '12' above the first measure. The fifth staff is marked with a '16' above the first measure. The sixth staff is marked with a '19' above the first measure. The seventh staff is marked with a '22' above the first measure. The eighth staff is marked with a '27' above the first measure. The ninth staff is marked with a '30' above the first measure. The tenth staff is marked with a '33' above the first measure. The music is written in a single melodic line with various rhythmic patterns, including eighth and sixteenth notes, and rests.

V.S.

Chris - We Wish You A Merry Xmas

Guitar

♩ = 83,999969

2

9

15

22

29

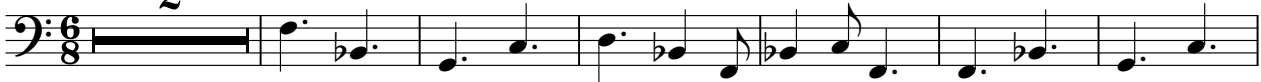
34

Chris - We Wish You A Merry Xmas

Bass

♩ = 83,999969

2



9



17



25



33



Chris - We Wish You A Merry Christmas

Violin

♩ = 83,999969

5

8

12

16

19

22

27

30

33

Detailed description: This image shows a violin score for the piece 'We Wish You A Merry Christmas' by Chris. The score is written in treble clef with a 6/8 time signature. It begins with a tempo marking of a quarter note equal to 83,999969. The music is divided into ten staves, each starting with a measure number: 5, 8, 12, 16, 19, 22, 27, 30, and 33. The notation includes various rhythmic values such as eighth and sixteenth notes, often beamed together, and rests. The piece concludes with a double bar line at the end of the final staff.

V.S.

