

Clarence Gatemouth Brown - Never Ending Love For You

♩ = 104,000557

DRUMS

BANJO

ACOU BASS

MELODY

PIZZICATO

SYNTH

♩ = 104,000557

STRINGS

A.PIANO

5

DRUMS

BANJO

ACOU BASS

MELODY

PIZZICATO

SYNTH

STRINGS

A.PIANO

Detailed description: This block contains the musical notation for measures 5 and 6. It features seven staves: DRUMS (top), BANJO (with fret numbers and slash notation), ACOU BASS (bass clef), MELODY (treble clef), PIZZICATO (treble clef), SYNTH (treble clef), STRINGS (bass clef with a long slur), and A.PIANO (treble clef). The key signature has one sharp (F#).



7

DRUMS

BANJO

ACOU BASS

MELODY

PIZZICATO

SYNTH

STRINGS

A.PIANO

Detailed description: This block contains the musical notation for measures 7 and 8. It features seven staves: DRUMS (top), BANJO (with fret numbers and slash notation), ACOU BASS (bass clef), MELODY (treble clef), PIZZICATO (treble clef), SYNTH (treble clef), STRINGS (bass clef with a long slur), and A.PIANO (treble clef). The key signature has one sharp (F#).

9

DRUMS

BANJO

ACOU BASS

MELODY

PIZZICATO

SYNTH

STRINGS

A.PIANO



11

DRUMS

BANJO

ACOU BASS

MELODY

PIZZICATO

SYNTH

STRINGS

A.PIANO

17

DRUMS

BANJO

ACOU BASS

MELODY

PIZZICATO

SYNTH

STRINGS

A.PIANO



19

DRUMS

BANJO

ACOU BASS

MELODY

PIZZICATO

SYNTH

STRINGS

A.PIANO

21

DRUMS

BANJO

ACOU BASS

MELODY

SYNTH

STRINGS

A.PIANO



24

DRUMS

BANJO

ACOU BASS

MELODY

SYNTH

STRINGS

A.PIANO

27

DRUMS

BANJO

ACOU BASS

MELODY

PIZZICATO

SYNTH

STRINGS

A.PIANO



29

DRUMS

BANJO

ACOU BASS

MELODY

PIZZICATO

SYNTH

STRINGS

A.PIANO

35

DRUMS

BANJO

ACOU BASS

MELODY

PIZZICATO

SYNTH

STRINGS

A.PIANO

Detailed description: This block contains the musical notation for measures 35 and 36. It features seven staves: DRUMS (top), BANJO (with fret numbers and slash notation), ACOU BASS (bass clef), MELODY (treble clef), PIZZICATO (treble clef), SYNTH (treble clef), and STRINGS (bass clef). A.PIANO is also present at the bottom. A double bar line is located between the two systems.



37

DRUMS

BANJO

ACOU BASS

MELODY

PIZZICATO

SYNTH

STRINGS

A.PIANO

Detailed description: This block contains the musical notation for measures 37 and 38. It features seven staves: DRUMS (top), BANJO (with fret numbers and slash notation), ACOU BASS (bass clef), MELODY (treble clef), PIZZICATO (treble clef), SYNTH (treble clef), and STRINGS (bass clef). A.PIANO is also present at the bottom.

39

DRUMS

BANJO

ACOU BASS

MELODY

PIZZICATO

SYNTH

STRINGS

A.PIANO

Detailed description: This system covers measures 39 and 40. The drums play a consistent pattern of eighth notes. The banjo part features a complex sequence of fret numbers (7, 6, 7, 4, 7, 6, 7, 4, 6, 0, 7, 9, 0, 4, 9, 0, 4, 9, 0, 4) with slurs and accents. The acoustic bass line consists of a steady eighth-note accompaniment. The melody line has a few notes with a sharp sign. The pizzicato part is a rhythmic accompaniment of eighth notes. The synth part provides a harmonic background with sustained notes. The strings play a sustained chord. The piano part has a few chords.



41

DRUMS

BANJO

ACOU BASS

MELODY

PIZZICATO

SYNTH

STRINGS

A.PIANO

Detailed description: This system covers measures 41 and 42. The drums continue their pattern. The banjo part has fret numbers (9, 0, 9, 0, 9, 0, 4, 7, 6, 7, 7, 7, 7, 7, 7, 7, 7, 0, 7) with slurs and accents. The acoustic bass line continues. The melody line has a triplet of eighth notes. The pizzicato part continues with eighth notes. The synth part continues with sustained notes. The strings play a sustained chord. The piano part continues with chords.

43

DRUMS

BANJO

ACOU BASS

MELODY

PIZZICATO

SYNTH

STRINGS

A.PIANO



45

DRUMS

BANJO

ACOU BASS

MELODY

SYNTH

STRINGS

A.PIANO

48

DRUMS

BANJO

ACOU BASS

MELODY

SYNTH

STRINGS

A.PIANO

Detailed description: This block contains the musical notation for measures 48, 49, and 50. The DRUMS part features a consistent rhythmic pattern of eighth notes. The BANJO part includes a complex sequence of fret numbers (9, 0, 4, 7, 0, 2, 9, 0, 5, 4, 5, 0, 5, 7, 4, 5, 0, 5, 7, 0, 4, 4, 5, 0, 4, 7, 0, 4, 5, 7, 0, 4, 5) and slash marks indicating specific playing techniques. The ACOU BASS part has a simple bass line. The MELODY part shows a few notes followed by rests. The SYNTH part has sustained chords. The STRINGS part has sustained chords. The A.PIANO part has a few notes and rests.



51

DRUMS

BANJO

ACOU BASS

MELODY

SYNTH

STRINGS

A.PIANO

Detailed description: This block contains the musical notation for measures 51, 52, and 53. The DRUMS part continues with the same rhythmic pattern. The BANJO part has fret numbers (7, 6, 0, 7, 4, 7, 0, 7, 0, 4, 7, 0, 7, 4, 7, 0, 7, 0, 4) and slash marks. The ACOU BASS part has a simple bass line. The MELODY part has a few notes. The SYNTH part has sustained chords. The STRINGS part has sustained chords. The A.PIANO part has a few notes and rests.

53

DRUMS

BANJO

ACOU BASS

MELODY

PIZZICATO

SYNTH

STRINGS

A.PIANO



55

DRUMS

BANJO

ACOU BASS

MELODY

PIZZICATO

SYNTH

STRINGS

A.PIANO

57

DRUMS

BANJO

ACOU BASS

MELODY

PIZZICATO

SYNTH

STRINGS

A.PIANO

Detailed description: This system of music covers measures 57 and 58. It features seven staves: DRUMS (top), BANJO (with fret numbers 9, 7, 0, 4, 9, 4, 0, 4, 0, 4, 9, 7, 0, 4, 9, 4, 0, 4, 0, 4), ACOU BASS, MELODY, PIZZICATO, SYNTH, STRINGS (with a large oval indicating a sustained chord), and A.PIANO. The key signature has one sharp (F#).



59

DRUMS

BANJO

ACOU BASS

MELODY

PIZZICATO

SYNTH

STRINGS

A.PIANO

Detailed description: This system of music covers measures 59 and 60. It features seven staves: DRUMS, BANJO (with fret numbers 7, 6, 7, 7, 7, 7, 7, 0, 7, 0, 7, 7, 7, 7, 7, 7, 7, 0, 7, 0, 7), ACOU BASS, MELODY, PIZZICATO, SYNTH, STRINGS (with a large oval indicating a sustained chord), and A.PIANO. The key signature has one sharp (F#).

61

DRUMS

BANJO

ACOU BASS

MELODY

PIZZICATO

SYNTH

STRINGS

A.PIANO



63

DRUMS

BANJO

ACOU BASS

MELODY

PIZZICATO

SYNTH

STRINGS

A.PIANO

65

DRUMS

BANJO

ACOU BASS

MELODY

PIZZICATO

SYNTH

STRINGS

A.PIANO

Detailed description: This system of music covers measures 65 and 66. It features seven staves: DRUMS, BANJO, ACOU BASS, MELODY, PIZZICATO, SYNTH, and STRINGS. The DRUMS staff shows a complex rhythmic pattern with various note values and rests. The BANJO staff includes a guitar-style tablature with fret numbers (9, 0, 4, 7, 4, 0, 4, 0, 4) and rhythmic notation. The ACOU BASS staff has a simple bass line with notes and rests. The MELODY staff shows a melodic line with notes and rests. The PIZZICATO staff features a series of chords with rhythmic notation. The SYNTH staff has a similar chordal structure. The STRINGS staff shows a sustained chord with a fermata. The A.PIANO staff has a series of chords with rhythmic notation.



67

DRUMS

BANJO

ACOU BASS

MELODY

PIZZICATO

SYNTH

STRINGS

A.PIANO

Detailed description: This system of music covers measures 67 and 68. It features seven staves: DRUMS, BANJO, ACOU BASS, MELODY, PIZZICATO, SYNTH, and STRINGS. The DRUMS staff shows a complex rhythmic pattern with various note values and rests. The BANJO staff includes a guitar-style tablature with fret numbers (7, 0, 7, 7, 7, 0, 7, 0, 7, 7, 0, 7, 0, 7, 7, 0, 7, 0, 7) and rhythmic notation. The ACOU BASS staff has a simple bass line with notes and rests. The MELODY staff shows a melodic line with notes and rests. The PIZZICATO staff features a series of chords with rhythmic notation. The SYNTH staff has a similar chordal structure. The STRINGS staff shows a sustained chord with a fermata. The A.PIANO staff has a series of chords with rhythmic notation.

69

DRUMS

BANJO

ACOU BASS

MELODY

PIZZICATO

SYNTH

STRINGS

A.PIANO

Detailed description: This is a multi-stem musical score for page 17, starting at measure 69. The score includes parts for Drums, Banjo, Acoustic Bass, Melody, Pizzicato, Synth, Strings, and A.Piano. The Drums part features a complex rhythmic pattern with various note values and rests. The Banjo part is written with a treble clef and includes numerous fret numbers (9, 0, 4, 7, 5, 0, 4, 0, 4, 9, 11, 12, 8, 9) and slash marks indicating specific techniques. The Acoustic Bass part is in bass clef with a simple line of notes. The Melody part is in treble clef with a few notes and rests. The Pizzicato part is in treble clef with a series of chords and notes. The Synth part is in treble clef with a few notes and rests. The Strings part is in bass clef with a few chords and notes. The A.Piano part is in treble clef with a series of chords and notes.

DRUMS

Clarence Gatemouth Brown - Never Ending Love For Y

♩ = 104,000557

2

5

7

9

11

13

15

17

19

22

V.S.

DRUMS

25

Musical notation for drum set at measure 25. The top staff shows a snare drum pattern with eighth notes and rests. The bottom staff shows a bass drum pattern with eighth notes and rests.

28

Musical notation for drum set at measure 28. The top staff shows a snare drum pattern with eighth notes and rests. The bottom staff shows a bass drum pattern with eighth notes and rests.

30

Musical notation for drum set at measure 30. The top staff shows a snare drum pattern with eighth notes and rests. The bottom staff shows a bass drum pattern with eighth notes and rests.

32

Musical notation for drum set at measure 32. The top staff shows a snare drum pattern with eighth notes and rests. The bottom staff shows a bass drum pattern with eighth notes and rests.

34

Musical notation for drum set at measure 34. The top staff shows a snare drum pattern with eighth notes and rests. The bottom staff shows a bass drum pattern with eighth notes and rests.

36

Musical notation for drum set at measure 36. The top staff shows a snare drum pattern with eighth notes and rests. The bottom staff shows a bass drum pattern with eighth notes and rests.

38

Musical notation for drum set at measure 38. The top staff shows a snare drum pattern with eighth notes and rests. The bottom staff shows a bass drum pattern with eighth notes and rests.

40

Musical notation for drum set at measure 40. The top staff shows a snare drum pattern with eighth notes and rests. The bottom staff shows a bass drum pattern with eighth notes and rests.

42

Musical notation for drum set at measure 42. The top staff shows a snare drum pattern with eighth notes and rests. The bottom staff shows a bass drum pattern with eighth notes and rests.

44

Musical notation for drum set at measure 44. The top staff shows a snare drum pattern with eighth notes and rests. The bottom staff shows a bass drum pattern with eighth notes and rests.

DRUMS

47

50

53

55

57

59

61

63

65

67

V.S.

Clarence Gatemouth Brown - Never Ending Love For Y

BANJO

♩ = 104,000557

2

60

6

8

10

12

14

16

18

20

22

V.S.

BANJO

24

Musical notation for measure 24, featuring a five-line staff with various fret numbers (7, 5, 4, 0, 4, 5, 7, 5, 2, 5, 7, 5, 0, 4, 2, 5) and rhythmic markings.

26

Musical notation for measure 26, featuring a five-line staff with various fret numbers (7, 0, 7, 4, 7, 0, 7, 0, 9, 7, 0, 7, 4, 7, 0, 7, 0, 4) and rhythmic markings.

28

Musical notation for measure 28, featuring a five-line staff with various fret numbers (10, 0, 7, 9, 10, 0, 7, 0, 7, 9, 0, 4, 7, 0, 4, 9, 0, 4) and rhythmic markings.

30

Musical notation for measure 30, featuring a five-line staff with various fret numbers (7, 7, 7, 7, 7, 7, 7, 7, 7, 7, 7, 7, 7, 7, 7, 7, 0, 7) and rhythmic markings.

32

Musical notation for measure 32, featuring a five-line staff with various fret numbers (9, 0, 9, 0, 9, 0, 9, 0, 9, 0, 9, 0, 9, 0, 9, 0, 4) and rhythmic markings.

34

Musical notation for measure 34, featuring a five-line staff with various fret numbers (7, 7, 7, 7, 7, 7, 7, 7, 0, 7, 7, 7, 7, 7, 7, 7, 0, 7) and rhythmic markings.

36

Musical notation for measure 36, featuring a five-line staff with various fret numbers (9, 0, 9, 0, 9, 0, 9, 0, 9, 0, 9, 0, 9, 0, 9, 0, 4) and rhythmic markings.

38

Musical notation for measure 38, featuring a five-line staff with various fret numbers (7, 7, 7, 7, 7, 7, 7, 7, 0, 7, 7, 7, 7, 7, 7, 7, 0, 7) and rhythmic markings.

40

Musical notation for measure 40, featuring a five-line staff with various fret numbers (9, 0, 9, 0, 9, 0, 9, 0, 9, 0, 9, 0, 9, 0, 9, 0, 4) and rhythmic markings.

42

Musical notation for measure 42, featuring a five-line staff with various fret numbers (7, 7, 7, 7, 7, 7, 7, 7, 0, 7, 7, 7, 7, 7, 7, 7, 0, 7) and rhythmic markings.

BANJO

44

Musical notation for measure 44, featuring a five-line staff with a treble clef. The notation includes a series of eighth notes with various fret numbers (9, 0, 4, 7) and a bass line with a single note (4) repeated.

46

Musical notation for measure 46, featuring a five-line staff with a treble clef. The notation includes a series of eighth notes with various fret numbers (5, 0, 4, 7) and a bass line with a single note (4) repeated.

48

Musical notation for measure 48, featuring a five-line staff with a treble clef. The notation includes a series of eighth notes with various fret numbers (9, 0, 2, 9, 0, 5, 4) and a bass line with a single note (4) repeated.

50

Musical notation for measure 50, featuring a five-line staff with a treble clef. The notation includes a series of eighth notes with various fret numbers (5, 0, 4, 7, 5, 0, 4, 7, 0, 7, 0, 4) and a bass line with a single note (4) repeated.

52

Musical notation for measure 52, featuring a five-line staff with a treble clef. The notation includes a series of eighth notes with various fret numbers (7, 0, 7, 4, 7, 0, 7, 0, 4, 7, 0, 7, 9, 10, 0, 9, 0, 7) and a bass line with a single note (4) repeated.

54

Musical notation for measure 54, featuring a five-line staff with a treble clef. The notation includes a series of eighth notes with various fret numbers (9, 0, 9, 0, 0, 4, 7, 7, 7, 7, 7, 7, 7, 7, 0, 7) and a bass line with a single note (4) repeated.

56

Musical notation for measure 56, featuring a five-line staff with a treble clef. The notation includes a series of eighth notes with various fret numbers (7, 7, 7, 7, 7, 0, 7, 0, 7, 9, 0, 4, 9, 4, 0, 4, 0) and a bass line with a single note (4) repeated.

58

Musical notation for measure 58, featuring a five-line staff with a treble clef. The notation includes a series of eighth notes with various fret numbers (9, 0, 9, 0, 0, 4, 7, 7, 7, 7, 7, 7, 7, 0, 7, 0, 7) and a bass line with a single note (4) repeated.

60

Musical notation for measure 60, featuring a five-line staff with a treble clef. The notation includes a series of eighth notes with various fret numbers (7, 7, 7, 7, 7, 0, 7, 0, 7, 9, 0, 4, 9, 4, 0, 4, 0) and a bass line with a single note (4) repeated.

62

Musical notation for measure 62, featuring a five-line staff with a treble clef. The notation includes a series of eighth notes with various fret numbers (9, 0, 9, 9, 0, 4, 9, 0, 7, 0, 7, 7, 7, 0, 7, 0, 7) and a bass line with a single note (4) repeated.

V.S.

4

BANJO

64

Musical notation for measures 64 and 65. Measure 64 contains two bars with fret numbers 7, 6, 7, 4, 6, 4, 7, 4, 0, 4. Measure 65 contains two bars with fret numbers 9, 0, 9, 4, 7, 4, 0, 4, 0, 4.

66

Musical notation for measures 66 and 67. Measure 66 contains two bars with fret numbers 9, 0, 9, 4, 7, 4, 0, 4, 0, 4. Measure 67 contains two bars with fret numbers 7, 0, 7, 7, 7, 0, 7, 0, 7, 4.

68

Musical notation for measures 68 and 69. Measure 68 contains two bars with fret numbers 7, 0, 7, 7, 7, 0, 7, 0, 7, 4. Measure 69 contains two bars with fret numbers 9, 0, 9, 5, 7, 4, 0, 4, 0, 5.

70

Musical notation for measure 70, consisting of two bars. The first bar has fret numbers 9, 11, 12, 8, 9, 7. The second bar has fret numbers 9, 7.

♩ = 104,000557

2

8

13

18

23

28

33

39

44

49

2

ACOU BASS

54



59



64



68



MELODY

Clarence Gatemouth Brown - Never Ending Love For Y

♩ = 104,000557

6

10

14

18

22

25

29



32



36



40



44



48



53



57



61

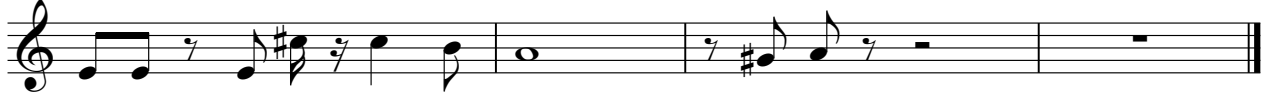


65



MELODY

68



PIZZICATO

Clarence Gatemouth Brown - Never Ending Love For Y

♩ = 104,000557

2

5

7

9

11

13

15

17

19

8

PIZZICATO

Musical score for guitar, pizzicato section, measures 28-53. The score is written in treble clef with a key signature of one sharp (F#). The tempo is marked 'PIZZICATO'. The music consists of a melodic line in the upper register and a rhythmic accompaniment in the lower register. The accompaniment is a steady eighth-note pattern. The melodic line features a sequence of eighth notes and quarter notes, with some accidentals. The score ends with a double bar line and a fermata over the final measure.

28
30
32
34
36
38
40
42
44
46
48
50
52
53

8

55

57

59

61

63

65

67

69

SYNTH

Clarence Gatemouth Brown - Never Ending Love For Y

♩ = 104,000557

2

8

14

19

25

30

36

42

48

53

V.S.

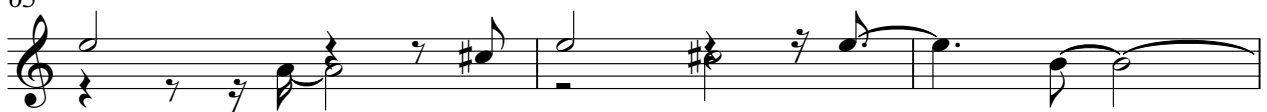
56



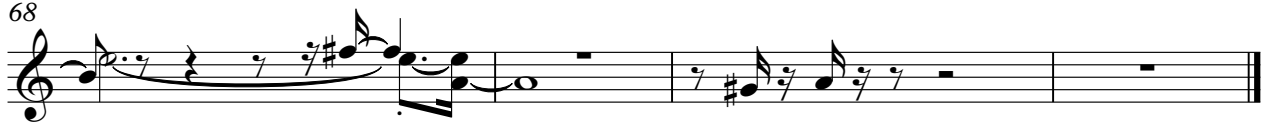
60



65



68



STRINGS

Clarence Gatemouth Brown - Never Ending Love For Y

♩ = 104,000557

10

19

28

37

46

55

64

69

A.PIANO

Clarence Gatemouth Brown - Never Ending Love For Y

♩ = 104,000557

6

10

14

18

27

30

34

38

42

V.S.

47

53

56

60

64

68