

Claude Dubois - Femmes Ou Filles

♩ = 106,000137

MELODIE

DRUMS

SYNT.SOLO

RHYTHM GUIT.RIGHT

SOLO GUIT.

RHYTHM GUIT.LEFT

BASS

CHOIR

BRASS

SWEEP PAD

♩ = 106,000137

SWEEP PAD PUNCH

3

DRUMS

RHYTHM GUIT.RIGHT

SOLO GUIT.

RHYTHM GUIT.LEFT

BASS

SWEEP PAD



5

DRUMS

RHYTHM GUIT.RIGHT

SOLO GUIT.

RHYTHM GUIT.LEFT

BASS

6

DRUMS

RHYTHM GUIT.RIGHT

SOLO GUIT.

RHYTHM GUIT.LEFT

BASS

SWEEP PAD



8

MELODIE

DRUMS

RHYTHM GUIT.RIGHT

SOLO GUIT.

RHYTHM GUIT.LEFT

BASS

BRASS

SWEEP PAD

SWEEP PAD PUNCH

10

MELODIE

DRUMS

RHYTHM GUIT.RIGHT

SOLO GUIT.

RHYTHM GUIT.LEFT

BASS



12

MELODIE

DRUMS

RHYTHM GUIT.RIGHT

SOLO GUIT.

RHYTHM GUIT.LEFT

BASS

14

MELODIE

DRUMS

RHYTHM GUIT.RIGHT

SOLO GUIT.

RHYTHM GUIT.LEFT

BASS



16

MELODIE

DRUMS

RHYTHM GUIT.RIGHT

SOLO GUIT.

RHYTHM GUIT.LEFT

BASS

18

MELODIE

DRUMS

RHYTHM GUIT.RIGHT

SOLO GUIT.

RHYTHM GUIT.LEFT

BASS



20

MELODIE

DRUMS

RHYTHM GUIT.RIGHT

SOLO GUIT.

RHYTHM GUIT.LEFT

BASS

22

MELODIE

DRUMS

RHYTHM GUIT.RIGHT

SOLO GUIT.

RHYTHM GUIT.LEFT

BASS



24

MELODIE

DRUMS

RHYTHM GUIT.RIGHT

SOLO GUIT.

RHYTHM GUIT.LEFT

BASS

26

MELODIE

DRUMS

RHYTHM GUIT.RIGHT

SOLO GUIT.

RHYTHM GUIT.LEFT

BASS



28

MELODIE

DRUMS

RHYTHM GUIT.RIGHT

SOLO GUIT.

RHYTHM GUIT.LEFT

BASS



30

MELODIE

DRUMS

RHYTHM GUIT.RIGHT

SOLO GUIT.

RHYTHM GUIT.LEFT

BASS



32

MELODIE

DRUMS

RHYTHM GUIT.RIGHT

SOLO GUIT.

RHYTHM GUIT.LEFT

BASS

34

MELODIE

DRUMS

RHYTHM GUIT.RIGHT

SOLO GUIT.

RHYTHM GUIT.LEFT

BASS



36

MELODIE

DRUMS

RHYTHM GUIT.RIGHT

SOLO GUIT.

RHYTHM GUIT.LEFT

BASS

BRASS

SWEEP PAD PUNCH

38

MELODIE

DRUMS

RHYTHM GUIT.RIGHT

SOLO GUIT.

RHYTHM GUIT.LEFT

BASS

CHOIR

SWEEP PAD



40

MELODIE

DRUMS

RHYTHM GUIT.RIGHT

SOLO GUIT.

RHYTHM GUIT.LEFT

BASS

CHOIR

SWEEP PAD

41

MELODIE

DRUMS

RHYTHM GUIT.RIGHT

SOLO GUIT.

RHYTHM GUIT.LEFT

BASS

CHOIR



42

MELODIE

DRUMS

RHYTHM GUIT.RIGHT

SOLO GUIT.

RHYTHM GUIT.LEFT

BASS

CHOIR

SWEEP PAD

44

MELODIE

DRUMS

RHYTHM GUIT.RIGHT

SOLO GUIT.

RHYTHM GUIT.LEFT

BASS

CHOIR

BRASS

SWEEP PAD

SWEEP PAD PUNCH



46

MELODIE

DRUMS

RHYTHM GUIT.RIGHT

RHYTHM GUIT.LEFT

BASS

MELODIE

DRUMS

RHYTHM GUIT.RIGHT

RHYTHM GUIT.LEFT

BASS

48

3



MELODIE

DRUMS

RHYTHM GUIT.RIGHT

RHYTHM GUIT.LEFT

BASS

50



MELODIE

DRUMS

RHYTHM GUIT.RIGHT

RHYTHM GUIT.LEFT

BASS

52

3

54

MELODIE

DRUMS

RHYTHM GUIT.RIGHT

RHYTHM GUIT.LEFT

BASS



56

MELODIE

DRUMS

RHYTHM GUIT.RIGHT

RHYTHM GUIT.LEFT

BASS



58

MELODIE

DRUMS

RHYTHM GUIT.RIGHT

RHYTHM GUIT.LEFT

BASS

60

MELODIE

DRUMS

RHYTHM GUIT.RIGHT

RHYTHM GUIT.LEFT

BASS



62

MELODIE

DRUMS

RHYTHM GUIT.RIGHT

RHYTHM GUIT.LEFT

BASS



64

MELODIE

DRUMS

RHYTHM GUIT.RIGHT

RHYTHM GUIT.LEFT

BASS



66

MELODIE

DRUMS

RHYTHM GUIT.RIGHT

RHYTHM GUIT.LEFT

BASS



68

MELODIE

DRUMS

RHYTHM GUIT.RIGHT

RHYTHM GUIT.LEFT

BASS

BRASS

SWEEP PAD PUNCH

70

MELODIE

DRUMS

RHYTHM GUIT.RIGHT

SOLO GUIT.

RHYTHM GUIT.LEFT

BASS

CHOIR

SWEEP PAD



72

MELODIE

DRUMS

RHYTHM GUIT.RIGHT

SOLO GUIT.

RHYTHM GUIT.LEFT

BASS

CHOIR

SWEEP PAD

73

MELODIE

Musical staff for MELODIE in treble clef. It shows a half note G4, a quarter rest, a half note A4, and a quarter note G4 with a fermata.

DRUMS

Musical staff for DRUMS in percussion clef. It features a complex rhythmic pattern with various note values and rests, including eighth and sixteenth notes.

RHYTHM GUIT.RIGHT

Musical staff for RHYTHM GUIT.RIGHT in treble clef. It contains a series of chords and single notes, primarily eighth and sixteenth notes.

SOLO GUIT.

Musical staff for SOLO GUIT. in treble clef. It features a long, sustained melodic line with a fermata, followed by a few notes and rests.

RHYTHM GUIT.LEFT

Musical staff for RHYTHM GUIT.LEFT in treble clef. It contains a series of chords and single notes, primarily eighth and sixteenth notes.

BASS

Musical staff for BASS in bass clef. It shows a rhythmic pattern of eighth and sixteenth notes, including a sharp sign on the final note.

CHOIR

Musical staff for CHOIR in treble clef. It shows a half note G4, a quarter rest, and a half note A4.

SWEEP PAD

Musical staff for SWEEP PAD in treble clef. It shows a half rest followed by a whole note chord.

MELODIE

DRUMS

RHYTHM GUIT.RIGHT

SOLO GUIT.

RHYTHM GUIT.LEFT

BASS

CHOIR

BRASS

SWEEP PAD

SWEEP PAD PUNCH

The image shows a multi-stem musical score for 11 different parts. The parts are: MELODIE (treble clef), DRUMS (drum set notation), RHYTHM GUIT.RIGHT (treble clef), SOLO GUIT. (treble clef), RHYTHM GUIT.LEFT (treble clef), BASS (bass clef), CHOIR (treble clef), BRASS (treble clef), SWEEP PAD (treble clef), and SWEEP PAD PUNCH (treble clef). The score is divided into two measures. The MELODIE part starts with a whole note G4. The DRUMS part features a complex rhythmic pattern with many 'x' marks indicating hits. The RHYTHM GUIT.RIGHT part has a series of chords and rests. The SOLO GUIT. part has a melodic line with a long note. The RHYTHM GUIT.LEFT part has a series of chords. The BASS part has a simple rhythmic line. The CHOIR, BRASS, SWEEP PAD, and SWEEP PAD PUNCH parts are mostly empty or have simple notes.

77

MELODIE

DRUMS

RHYTHM GUIT.RIGHT

SOLO GUIT.

RHYTHM GUIT.LEFT

BASS

BRASS

SWEEP PAD PUNCH



79

MELODIE

DRUMS

RHYTHM GUIT.RIGHT

RHYTHM GUIT.LEFT

BASS

81

MELODIE

DRUMS

RHYTHM GUIT.RIGHT

RHYTHM GUIT.LEFT

BASS



83

MELODIE

DRUMS

RHYTHM GUIT.RIGHT

RHYTHM GUIT.LEFT

BASS



85

MELODIE

DRUMS

RHYTHM GUIT.RIGHT

RHYTHM GUIT.LEFT

BASS

87

MELODIE

DRUMS

RHYTHM GUIT.RIGHT

RHYTHM GUIT.LEFT

BASS



89

MELODIE

DRUMS

RHYTHM GUIT.RIGHT

RHYTHM GUIT.LEFT

BASS

91

MELODIE

Musical staff for MELODIE, showing a sequence of notes in a 7/8 time signature.

DRUMS

Musical staff for DRUMS, showing a complex rhythmic pattern with various drum symbols.

RHYTHM GUIT.RIGHT

Musical staff for RHYTHM GUIT.RIGHT, showing a rhythmic pattern with chords and rests.

SOLO GUIT.

Musical staff for SOLO GUIT., showing a melodic line with a sharp sign and a final flourish.

RHYTHM GUIT.LEFT

Musical staff for RHYTHM GUIT.LEFT, showing a rhythmic pattern with chords and rests.

BASS

Musical staff for BASS, showing a bass line with eighth notes.

CHOIR

Musical staff for CHOIR, showing a melodic line with a sharp sign and a final flourish.

BRASS

Musical staff for BRASS, showing a melodic line with a sharp sign and a final flourish.

SWEEP PAD

Musical staff for SWEEP PAD, showing a melodic line with a sharp sign and a final flourish.

SWEEP PAD PUNCH

Musical staff for SWEEP PAD PUNCH, showing a melodic line with a sharp sign and a final flourish.



95

MELODIE

DRUMS

RHYTHM GUIT.RIGHT

SOLO GUIT.

RHYTHM GUIT.LEFT

BASS

CHOIR

SWEEP PAD



97

MELODIE

DRUMS

RHYTHM GUIT.RIGHT

SOLO GUIT.

RHYTHM GUIT.LEFT

BASS

CHOIR

SWEEP PAD

99

MELODIE

DRUMS

RHYTHM GUIT.RIGHT

SOLO GUIT.

RHYTHM GUIT.LEFT

BASS

CHOIR

SWEEP PAD



101

MELODIE

DRUMS

RHYTHM GUIT.RIGHT

SOLO GUIT.

RHYTHM GUIT.LEFT

BASS

CHOIR

SWEEP PAD

103

MELODIE

DRUMS

RHYTHM GUIT.RIGHT

SOLO GUIT.

RHYTHM GUIT.LEFT

BASS

CHOIR

SWEEP PAD



105

MELODIE

DRUMS

RHYTHM GUIT.RIGHT

SOLO GUIT.

RHYTHM GUIT.LEFT

BASS

CHOIR

SWEEP PAD

MELODIE

Musical staff for MELODIE, starting with a treble clef and a key signature of one flat. It contains two measures of music: the first measure has a whole note G4, and the second measure has a whole rest.

DRUMS

Musical staff for DRUMS, starting with a drum clef. It contains two measures of music, each with a 4-beat pattern of eighth notes: x (snare), o (kick), x (snare), o (kick).

RHYTHM GUIT.RIGHT

Musical staff for RHYTHM GUIT.RIGHT, starting with a treble clef and a key signature of one flat. It contains two measures of music with chords and rhythmic notation (slashes and dots).

SOLO GUIT.

Musical staff for SOLO GUIT., starting with a treble clef and a key signature of one flat. It contains two measures of music: the first measure has a half note G4, and the second measure has a half note G4 with a slur over it.

RHYTHM GUIT.LEFT

Musical staff for RHYTHM GUIT.LEFT, starting with a treble clef and a key signature of one flat. It contains two measures of music with chords and rhythmic notation (slashes and dots).

BASS

Musical staff for BASS, starting with a bass clef and a key signature of one flat. It contains two measures of music with eighth notes: G2, F2, E2, D2 in the first measure, and G2, F2, E2, D2 in the second measure.

CHOIR

Musical staff for CHOIR, starting with a treble clef and a key signature of one flat. It contains two measures of music: the first measure has a whole note G4, and the second measure has a whole rest.

SWEEP PAD

Musical staff for SWEEP PAD, starting with a treble clef and a key signature of one flat. It contains two measures of music: the first measure has a whole note chord (G2, B1, D2, F2), and the second measure has a whole note chord (G2, B1, D2, F2).

109

MELODIE

DRUMS

SYNT.SOLO

RHYTHM GUIT.RIGHT

SOLO GUIT.

RHYTHM GUIT.LEFT

BASS

CHOIR

SWEEP PAD



111

DRUMS

SYNT.SOLO

RHYTHM GUIT.RIGHT

RHYTHM GUIT.LEFT

BASS

SWEEP PAD

113

DRUMS

SYNT.SOLO

RHYTHM GUIT.RIGHT

RHYTHM GUIT.LEFT

BASS

SWEEP PAD



115

DRUMS

SYNT.SOLO

RHYTHM GUIT.RIGHT

RHYTHM GUIT.LEFT

BASS

SWEEP PAD

116

DRUMS

SYNT.SOLO

RHYTHM GUIT.RIGHT

RHYTHM GUIT.LEFT

BASS

SWEEP PAD



117

DRUMS

SYNT.SOLO

RHYTHM GUIT.RIGHT

RHYTHM GUIT.LEFT

BASS

SWEEP PAD

119

DRUMS

SYNT.SOLO

RHYTHM GUIT.RIGHT

RHYTHM GUIT.LEFT

BASS

SWEEP PAD



121

DRUMS

SYNT.SOLO

RHYTHM GUIT.RIGHT

RHYTHM GUIT.LEFT

BASS



122

DRUMS

SYNT.SOLO

RHYTHM GUIT.RIGHT

RHYTHM GUIT.LEFT

BASS

SWEEP PAD



124

DRUMS

SYNT.SOLO

RHYTHM GUIT.RIGHT

RHYTHM GUIT.LEFT

BASS

SWEEP PAD

125

DRUMS

SYNT.SOLO

RHYTHM GUIT.RIGHT

RHYTHM GUIT.LEFT

BASS



126

DRUMS

SYNT.SOLO

RHYTHM GUIT.RIGHT

RHYTHM GUIT.LEFT

BASS

SWEEP PAD

128

DRUMS

SYNT.SOLO

RHYTHM GUIT.RIGHT

RHYTHM GUIT.LEFT

BASS

SWEEP PAD



129

DRUMS

SYNT.SOLO

RHYTHM GUIT.RIGHT

RHYTHM GUIT.LEFT

BASS

130

DRUMS

SYNT.SOLO

RHYTHM GUIT.RIGHT

RHYTHM GUIT.LEFT

BASS

SWEEP PAD



131

DRUMS

SYNT.SOLO

RHYTHM GUIT.RIGHT

RHYTHM GUIT.LEFT

BASS

SWEEP PAD

132

DRUMS

Musical notation for DRUMS, showing a complex rhythmic pattern with various note values and rests.

SYNT.SOLO

Musical notation for SYNT.SOLO, featuring a melodic line with a long slur across the first two measures.

RHYTHM GUIT.RIGHT

Musical notation for RHYTHM GUIT.RIGHT, showing rhythmic patterns with chords and single notes.

SOLO GUIT.

Musical notation for SOLO GUIT., consisting of a single measure with a whole rest.

RHYTHM GUIT.LEFT

Musical notation for RHYTHM GUIT.LEFT, showing rhythmic patterns with chords and single notes.

BASS

Musical notation for BASS, featuring a melodic line in the bass clef.

BRASS

Musical notation for BRASS, showing a grand staff with chords in the upper and lower staves.

SWEEP PAD

Musical notation for SWEEP PAD, showing a melodic line with a sweep-like motion.

SWEEP PAD PUNCH

Musical notation for SWEEP PAD PUNCH, showing a melodic line with a sharp attack.

MELODIE

Claude Dubois - Femmes Ou Filles

♩ = 106,000137

8

12

16

21

25

29

33

35



MELODIE

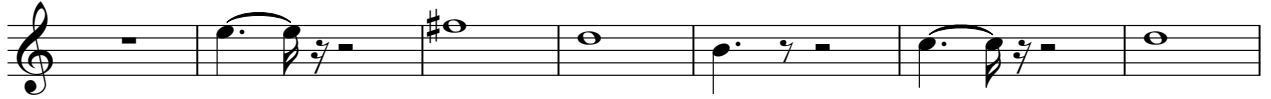
84



88



93



100



106





DRUMS

Claude Dubois - Femmes Ou Filles

♩ = 106,000137

4/4

3

5

7

10

12

14

16

18

20

V.S.

DRUMS

22

Musical notation for measures 22 and 23. The top staff shows a drum set with various patterns of 'x' marks representing hits. The bottom staff shows a bass line with eighth and sixteenth notes.

24

Musical notation for measures 24 and 25. Similar to the previous system, with drum patterns and a bass line.

26

Musical notation for measures 26 and 27. Similar to the previous system, with drum patterns and a bass line.

28

Musical notation for measures 28 and 29. Similar to the previous system, with drum patterns and a bass line.

30

Musical notation for measures 30 and 31. Similar to the previous system, with drum patterns and a bass line. A triplet of eighth notes is marked with a '3' in measure 31.

32

Musical notation for measures 32 and 33. Similar to the previous system, with drum patterns and a bass line.

34

Musical notation for measures 34 and 35. Similar to the previous system, with drum patterns and a bass line.

36

Musical notation for measures 36 and 37. Similar to the previous system, with drum patterns and a bass line. Measure 37 features a double bar line and a fermata over a note.

38

Musical notation for measures 38 and 39. Similar to the previous system, with drum patterns and a bass line.

40

Musical notation for measures 40 and 41. Similar to the previous system, with drum patterns and a bass line.

DRUMS

42

44

46

48

50

52

54

56

58

60

V.S.

## DRUMS

62

64

66

68

70

72

74

76

78

80

DRUMS

82

84

86

88

90

94

96

98

100

102

V.S.

## DRUMS

104

106

108

111

113

115

117

119

121

123

DRUMS

124

Musical notation for drum set at measure 124. The notation is on a five-line staff with a double bar line at the beginning. It features a complex rhythmic pattern with various note values and rests, including eighth and sixteenth notes, and rests. The pattern is repeated across the measure.

126

Musical notation for drum set at measure 126. The notation is on a five-line staff with a double bar line at the beginning. It features a complex rhythmic pattern with various note values and rests, including eighth and sixteenth notes, and rests. The pattern is repeated across the measure.

128

Musical notation for drum set at measure 128. The notation is on a five-line staff with a double bar line at the beginning. It features a complex rhythmic pattern with various note values and rests, including eighth and sixteenth notes, and rests. The pattern is repeated across the measure.

130

Musical notation for drum set at measure 130. The notation is on a five-line staff with a double bar line at the beginning. It features a complex rhythmic pattern with various note values and rests, including eighth and sixteenth notes, and rests. The pattern is repeated across the measure.

132

Musical notation for drum set at measure 132. The notation is on a five-line staff with a double bar line at the beginning. It features a complex rhythmic pattern with various note values and rests, including eighth and sixteenth notes, and rests. The pattern is repeated across the measure.

♩ = 106,000137


**108**



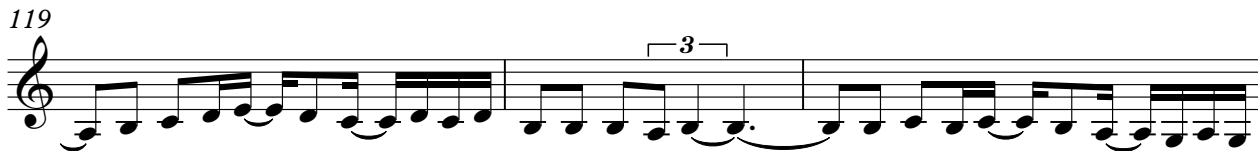
111



116



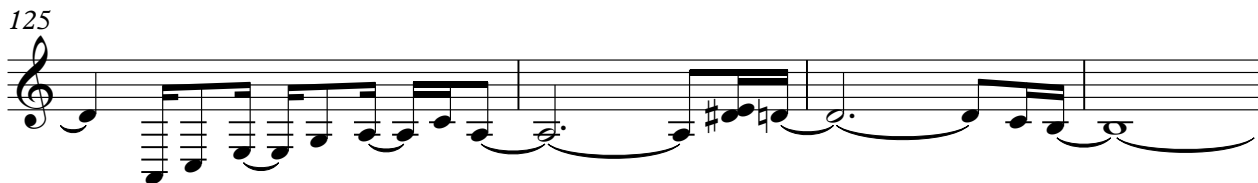
119



122



125



129



131





RHYTHM GUIT.RIGHT

Claude Dubois - Femmes Ou Filles

♩ = 106,000137

5

8

12

15

18

21

24

27

30

V.S.

33



36



40



43



47



50



53



56



59



62



65

68

72

75

79

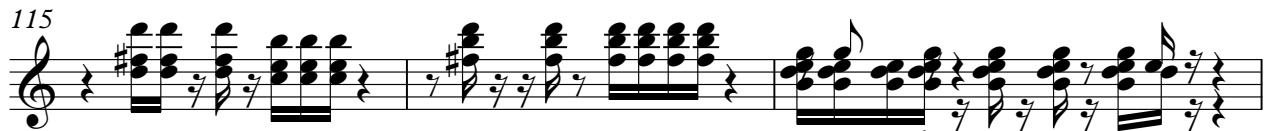
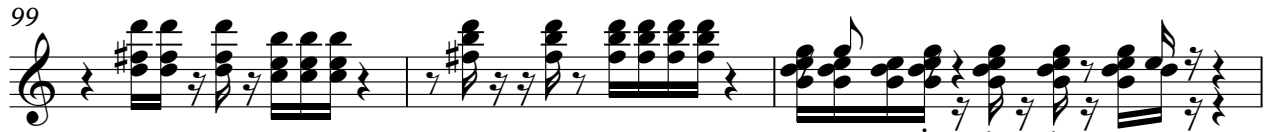
82

85

88

92

96



RHYTHM GUIT.RIGHT

130



132



SOLO GUIT.

Claude Dubois - Femmes Ou Filles

♩ = 106,000137

8

17

26

35

42 **24**

70

75 **16**

Detailed description: The image shows a guitar solo score for Claude Dubois's 'Femmes Ou Filles'. It consists of eight staves of music in 4/4 time. The tempo is marked as ♩ = 106,000137. The first staff begins with a whole rest, followed by a triplet of eighth notes (F#4, G4, A4) and another triplet (B3, A3, G3). The second staff contains a continuous eighth-note arpeggiated pattern (F#4, G4, A4, B3). The third staff continues this pattern. The fourth staff also continues the arpeggiated pattern. The fifth staff shows the arpeggiated pattern transitioning into a more complex melodic line with slurs and accents. The sixth staff features a melodic line with a triplet of eighth notes (F#4, G4, A4) and a 24-measure repeat sign. The seventh staff continues the melodic line with slurs and accents. The eighth staff concludes with a melodic line and a 16-measure repeat sign.

2

SOLO GUIT.

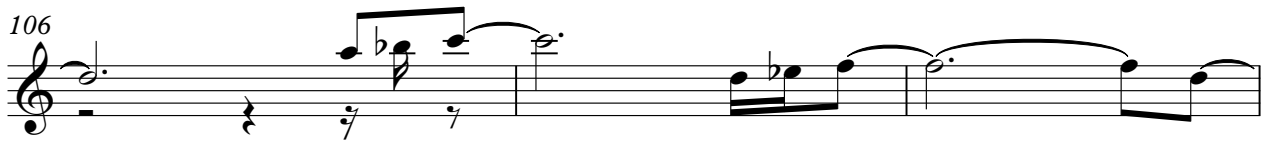
94



100

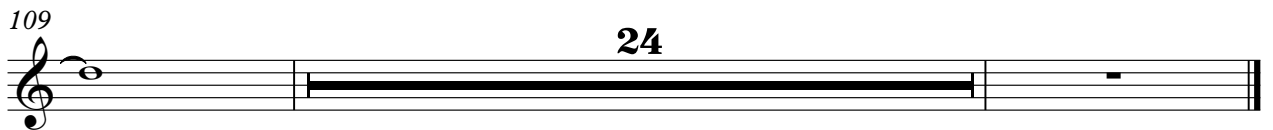


106



109

24



RHYTHM GUIT.LEFT

Claude Dubois - Femmes Ou Filles

♩ = 106,000137

5

8

12

15

18

21

24

27

30

V.S.





65

68

72

75

79

82

85

88

92

97

100

103

106

110

113

116

119

122

125

128

131



Claude Dubois - Femmes Ou Filles

BASS

♩ = 106,000137



V.S.

42



47



51



55



59



63



67



71



75



79



83



87



91



97



101



105



109



113



117



121



V.S.

4

BASS

125



129



132





CHOIR

Claude Dubois - Femmes Ou Filles

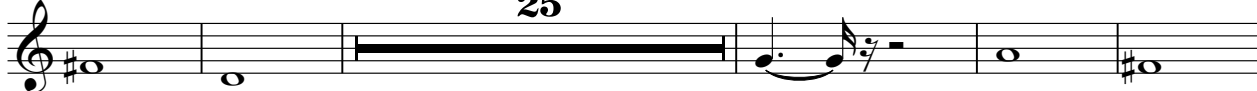
♩ = 106,000137

**37**




43

**25**



73

**17**



95



103



108

**25**



BRASS

Claude Dubois - Femmes Ou Filles

♩ = 106,000137

6 26

This musical staff is in 4/4 time. It contains two measures of music. The first measure is marked with a '6' and contains a whole rest. The second measure is marked with a '26' and contains a whole rest. The staff begins with a treble clef and a 4/4 time signature.

37

6 22

This musical staff is in 4/4 time. It contains two measures of music. The first measure is marked with a '6' and contains a whole rest. The second measure is marked with a '22' and contains a whole rest. The staff begins with a treble clef and a 4/4 time signature.

69

6 14

This musical staff is in 4/4 time. It contains two measures of music. The first measure is marked with a '6' and contains a whole rest. The second measure is marked with a '14' and contains a whole rest. The staff begins with a treble clef and a 4/4 time signature.

92

39 39

This musical staff is in 4/4 time and consists of two staves: a treble staff and a bass staff. It contains two measures of music. The first measure is marked with a '39' and contains a whole rest in both staves. The second measure is marked with a '39' and contains a whole rest in both staves. The staff begins with a treble clef and a 4/4 time signature.

SWEEP PAD

Claude Dubois - Femmes Ou Filles

♩ = 106,000137

9 29

43 25

74 17

96

104

112

120

127 2

SWEEP PAD PUNCH

Claude Dubois - Femmes Ou Filles

♩ = 106,000137

7 26

38

6 22

70

6 14

92

39