

Claudinho e Bochecha - O Pobre

$\text{♩} = 135,000137$

Percussion

4

Perc.

E. Bass

Organ

FM

7

Perc.

E. Bass

Organ

FM

10

Perc. E. Bass Organ FM

This system covers measures 10, 11, and 12. The Percussion part features a complex rhythmic pattern with eighth and sixteenth notes, accented with 'x' marks. The Electric Bass line consists of a steady eighth-note sequence. The Organ part plays sustained chords with a long slur across all three measures. The FM (Fretless Mandolin) part provides harmonic support with sustained chords.

13

Perc. E. Bass Organ FM

This system covers measures 13, 14, and 15. The Percussion part continues with its rhythmic pattern. The Electric Bass line has a more varied rhythm, including a measure with a slash and a quarter rest. The Organ part shows a change in the right-hand part in measure 14, with a slur extending into measure 15. The FM part remains consistent with sustained chords.

16

Perc. E. Bass Organ FM

This system covers measures 16, 17, and 18. The Percussion part maintains its rhythmic complexity. The Electric Bass line continues with its eighth-note pattern. The Organ part plays sustained chords with a long slur across all three measures. The FM part provides harmonic support with sustained chords.

19

Perc.

E. Bass

Organ

FM

3

22

Perc.

E. Bass

Organ

FM

24

Perc.

E. Bass

Organ

FM

26

Perc. E. Bass Organ FM

This system covers measures 26 and 27. The Percussion part features a complex rhythmic pattern with eighth and sixteenth notes, some marked with asterisks. The Electric Bass part has a steady eighth-note line. The Organ and FM parts consist of sustained chords with long horizontal lines indicating they are held across the measures.

28

Perc. E. Bass Organ FM

This system covers measures 28, 29, and 30. The Percussion part continues with its rhythmic pattern. The Electric Bass part has a more varied line with some rests and accidentals. The Organ and FM parts continue with sustained chords, with some changes in voicing between measures.

31

Perc. E. Bass Organ FM

This system covers measures 31, 32, and 33. The Percussion part maintains its rhythmic complexity. The Electric Bass part has a line with some rests and accidentals. The Organ and FM parts continue with sustained chords, showing some changes in voicing and dynamics.

34

Perc. E. Bass Organ FM

This system covers measures 34 and 35. The Percussion part features a complex rhythmic pattern with eighth and sixteenth notes, accented with 'x' marks. The Electric Bass part plays a steady eighth-note line. The Organ and FM parts consist of sustained chords with long horizontal lines indicating they are held across both measures.

36

Perc. E. Bass Organ FM

This system covers measures 36 and 37. The Percussion part continues with its rhythmic pattern. The Electric Bass part has a more varied rhythm, including quarter and eighth notes. The Organ part shows a melodic line in measure 36 that resolves into a chord in measure 37. The FM part continues with sustained chords.

38

Perc. E. Bass Organ FM

This system covers measures 38 and 39. The Percussion part maintains its rhythmic pattern. The Electric Bass part plays a consistent eighth-note line. The Organ part features a melodic line in measure 38 that leads to a sustained chord in measure 39. The FM part continues with sustained chords.

40

Perc. E. Bass Organ FM

This system covers measures 40, 41, and 42. The Percussion part features a complex rhythmic pattern with various note values and rests, some marked with 'x'. The Electric Bass part consists of a sequence of eighth and quarter notes. The Organ part is characterized by long, sustained chords with a melodic line. The FM (Fretless Mandolin) part provides harmonic support with sustained chords.

43

Perc. E. Bass Organ FM

This system covers measures 43, 44, and 45. The Percussion part continues with its intricate rhythmic pattern. The Electric Bass part maintains a steady eighth-note flow. The Organ part features sustained chords with a melodic line. The FM part provides harmonic support with sustained chords.

46

Perc. E. Bass Organ FM

This system covers measures 46, 47, and 48. The Percussion part continues with its intricate rhythmic pattern. The Electric Bass part maintains a steady eighth-note flow. The Organ part features sustained chords with a melodic line. The FM part provides harmonic support with sustained chords.

49

Perc. E. Bass Organ FM

This system contains measures 49, 50, and 51. The Percussion part features a complex rhythmic pattern with various note values and rests. The Electric Bass part provides a steady accompaniment. The Organ part consists of sustained chords with a melodic line. The Fretless Mandolin part plays a consistent harmonic accompaniment.

52

Perc. E. Bass Organ FM

This system contains measures 52, 53, and 54. The Percussion part continues with its intricate rhythmic design. The Electric Bass part has a more active role with eighth notes. The Organ part maintains its sustained accompaniment. The Fretless Mandolin part continues with its harmonic accompaniment.

55

Perc. E. Bass Organ FM

This system contains measures 55, 56, and 57. The Percussion part features a consistent rhythmic pattern. The Electric Bass part has a more active role with eighth notes. The Organ part maintains its sustained accompaniment. The Fretless Mandolin part continues with its harmonic accompaniment.

58

Perc. E. Bass Organ FM

This system contains measures 58, 59, and 60. The Percussion part features a complex rhythmic pattern with various note values and rests. The Electric Bass part has a melodic line with eighth and quarter notes. The Organ part consists of sustained chords with a long slur over the first two measures. The FM (Fretless Mandolin) part plays sustained chords in the bass register.

61

Perc. E. Bass Organ FM

This system contains measures 61, 62, and 63. The Percussion part continues with its rhythmic pattern. The Electric Bass part has a melodic line with eighth and quarter notes. The Organ part has sustained chords with a long slur over the first two measures. The FM part plays sustained chords in the bass register.

64

Perc. E. Bass Organ FM

This system contains measures 64, 65, and 66. The Percussion part continues with its rhythmic pattern. The Electric Bass part has a melodic line with eighth and quarter notes. The Organ part has sustained chords with a long slur over the first two measures. The FM part plays sustained chords in the bass register.

66

Perc. E. Bass Organ FM

This system covers measures 66 to 68. The Percussion part features a complex rhythmic pattern with various accents and rests. The Electric Bass line consists of eighth and quarter notes. The Organ and FM (Fretless Mandolin) parts provide harmonic support with sustained chords and melodic fragments.

69

Perc. E. Bass Organ FM

This system covers measures 69 and 70. The Percussion part continues with its rhythmic motif. The Electric Bass line shows a change in rhythm with more frequent notes. The Organ and FM parts maintain their harmonic accompaniment.

71

Perc. E. Bass Organ FM

This system covers measures 71 to 73. The Percussion part remains consistent. The Electric Bass line features a steady eighth-note pattern. The Organ and FM parts continue to provide harmonic accompaniment.

74

Perc. E. Bass Organ FM

This system contains measures 74, 75, and 76. The Percussion part features a complex rhythmic pattern with various note values and rests. The Electric Bass part has a melodic line with eighth and quarter notes. The Organ part consists of sustained chords with a long slur across the three measures. The FM part provides harmonic support with chords in the bass register.

77

Perc. E. Bass Organ FM

This system contains measures 77, 78, and 79. The Percussion part continues with its rhythmic pattern. The Electric Bass part has a melodic line with eighth and quarter notes. The Organ part consists of sustained chords with a long slur across the three measures. The FM part provides harmonic support with chords in the bass register.

80

Perc. E. Bass Organ FM

This system contains measures 80, 81, and 82. The Percussion part continues with its rhythmic pattern. The Electric Bass part has a melodic line with eighth and quarter notes. The Organ part consists of sustained chords with a long slur across the three measures. The FM part provides harmonic support with chords in the bass register.

83

Perc. E. Bass Organ FM

This system contains measures 83, 84, and 85. The Percussion part features a complex rhythmic pattern with various note values and rests. The Electric Bass part has a melodic line with some slurs. The Organ part consists of sustained chords with a long slur across measures 84 and 85. The FM part provides a harmonic foundation with chords in the bass register.

86

Perc. E. Bass Organ FM

This system contains measures 86, 87, and 88. The Percussion part continues with its rhythmic pattern. The Electric Bass part has a melodic line with some slurs. The Organ part consists of sustained chords with a long slur across measures 87 and 88. The FM part provides a harmonic foundation with chords in the bass register.

89

Perc. E. Bass Organ FM

This system contains measures 89, 90, and 91. The Percussion part continues with its rhythmic pattern. The Electric Bass part has a melodic line with some slurs. The Organ part consists of sustained chords with a long slur across measures 90 and 91. The FM part provides a harmonic foundation with chords in the bass register.

92

Perc. E. Bass Organ FM

This system contains measures 92, 93, and 94. The Percussion part features a complex rhythmic pattern with various note values and rests. The Electric Bass part has a melodic line with eighth and quarter notes. The Organ part consists of sustained chords with a long slur across the measures. The FM part provides harmonic support with chords in the bass register.

95

Perc. E. Bass Organ FM

This system contains measures 95, 96, and 97. The Percussion part continues with its rhythmic pattern. The Electric Bass part maintains its melodic line. The Organ part has sustained chords with a long slur. The FM part continues with its harmonic accompaniment.

98

Perc. E. Bass Organ FM

This system contains measures 98, 99, and 100. The Percussion part continues with its rhythmic pattern. The Electric Bass part maintains its melodic line. The Organ part has sustained chords with a long slur. The FM part continues with its harmonic accompaniment.

101

Perc. E. Bass Organ FM

This system covers measures 101 to 103. The Percussion part features a complex rhythmic pattern with various note values and rests. The E. Bass part has a melodic line with some chromaticism. The Organ part consists of sustained chords with a long slur. The FM part provides harmonic support with chords in the bass clef.

104

Perc. E. Bass Organ FM

This system covers measures 104 to 106. The Percussion part continues with its rhythmic pattern. The E. Bass part has a more active melodic line. The Organ part shows a change in chord voicing. The FM part continues with harmonic support.

107

Perc. E. Bass Organ FM

This system covers measures 107 to 109. The Percussion part maintains its rhythmic pattern. The E. Bass part has a melodic line with some grace notes. The Organ part features a long slur across the measures. The FM part continues with harmonic support.

110

Perc. E. Bass Organ FM

Detailed description: This system covers measures 110, 111, and 112. The Percussion part features a complex rhythmic pattern with various note values and rests. The Electric Bass part provides a steady accompaniment. The Organ and FM parts play sustained chords, with the Organ part including a fermata over the final measure.

113

Perc. E. Bass Organ FM

Detailed description: This system covers measures 113, 114, and 115. The Percussion part continues with its rhythmic pattern. The Electric Bass part has a more active line with eighth notes. The Organ and FM parts play sustained chords, with the Organ part including a fermata over the final measure.

116

Perc. E. Bass Organ FM

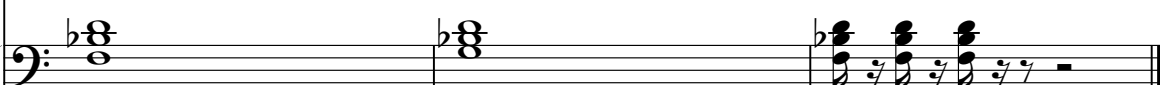
Detailed description: This system covers measures 116, 117, and 118. The Percussion part continues with its rhythmic pattern. The Electric Bass part has a more active line with eighth notes. The Organ and FM parts play sustained chords, with the Organ part including a fermata over the final measure.

119

Perc. 

E. Bass 

Organ 

FM 

Claudinho e Bochecha - O Pobre

Percussion

♩ = 135,000137

4

7

10

13

16

19

22

25

28

V.S.

Percussion

31

34

37

40

43

46

49

52

55

58

Percussion

The image displays a musical score for a percussion instrument, consisting of ten systems of staves. Each system is labeled with a measure number: 61, 64, 67, 70, 73, 76, 79, 82, 85, and 88. The notation is complex, featuring a series of rhythmic patterns. The upper staff of each system contains a sequence of 'x' marks, likely representing cymbal or snare hits, with some 'x' marks having asterisks above them. The lower staff contains a series of rhythmic notes, including eighth and sixteenth notes, with stems pointing upwards. The notation is dense and repetitive, suggesting a complex, multi-layered rhythmic texture. The overall layout is clean and professional, typical of a printed music score.

V.S.

Percussion

91

Measure 91: A six-measure percussion staff. The top staff shows a rhythmic pattern of eighth notes with 'x' marks above them. The bottom staff shows a corresponding melodic line with eighth notes and rests.

94

Measure 94: A six-measure percussion staff. The top staff shows a rhythmic pattern of eighth notes with 'x' marks above them. The bottom staff shows a corresponding melodic line with eighth notes and rests.

97

Measure 97: A six-measure percussion staff. The top staff shows a rhythmic pattern of eighth notes with 'x' marks above them. The bottom staff shows a corresponding melodic line with eighth notes and rests.

100

Measure 100: A six-measure percussion staff. The top staff shows a rhythmic pattern of eighth notes with 'x' marks above them. The bottom staff shows a corresponding melodic line with eighth notes and rests.

103

Measure 103: A six-measure percussion staff. The top staff shows a rhythmic pattern of eighth notes with 'x' marks above them. The bottom staff shows a corresponding melodic line with eighth notes and rests.

106

Measure 106: A six-measure percussion staff. The top staff shows a rhythmic pattern of eighth notes with 'x' marks above them. The bottom staff shows a corresponding melodic line with eighth notes and rests.

109

Measure 109: A six-measure percussion staff. The top staff shows a rhythmic pattern of eighth notes with 'x' marks above them. The bottom staff shows a corresponding melodic line with eighth notes and rests.

113

Measure 113: A six-measure percussion staff. The top staff shows a rhythmic pattern of eighth notes with 'x' marks above them. The bottom staff shows a corresponding melodic line with eighth notes and rests.

116

Measure 116: A six-measure percussion staff. The top staff shows a rhythmic pattern of eighth notes with 'x' marks above them. The bottom staff shows a corresponding melodic line with eighth notes and rests.

119

Measure 119: A six-measure percussion staff. The top staff shows a rhythmic pattern of eighth notes with 'x' marks above them. The bottom staff shows a corresponding melodic line with eighth notes and rests.

Claudinho e Bochecha - O Pobre

Electric Bass

♩ = 135,000137

4

9

14

19

23

27

32

36

41

46

V.S.

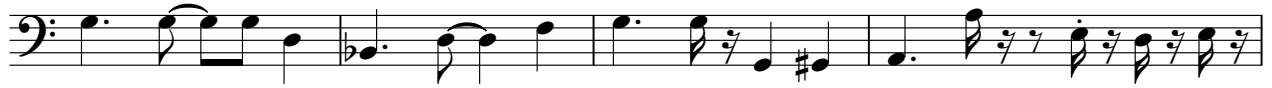
51



56



61



65



69



74



79



84



89



94



99



104



109



114



118



Rock Organ

Claudinho e Bochecha - O Pobre

♩ = 135,000137

5

13

21

28

36

42

51

60

V.S.

67



75



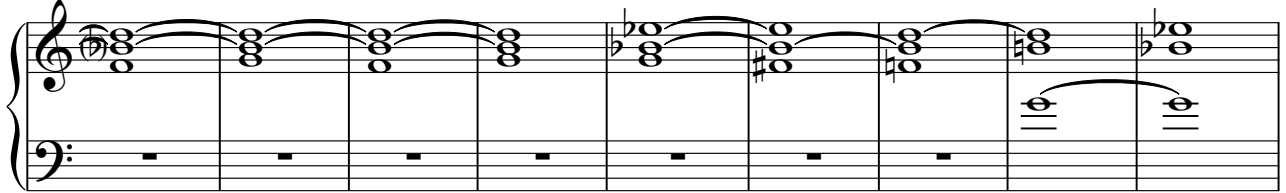
84



93



102



111



117



♩ = 135,000137

5

Musical notation for measures 5-12, bass clef, 4/4 time signature. Measure 5 contains a whole rest. Measures 6-12 feature eighth-note chords: Bb2-Gb2, Ab2-Fb2, Gb2-Eb2, Fb2-Db2, Eb2-Cb2, D2-Bb1, C2-Ab1, and Bb1-Gb1.

13

Musical notation for measures 13-20, bass clef, 4/4 time signature. Measures 13-20 feature eighth-note chords: Bb2-Gb2, Ab2-Fb2, Gb2-Eb2, Fb2-Db2, Eb2-Cb2, D2-Bb1, C2-Ab1, and Bb1-Gb1.

21

Musical notation for measures 21-28, grand staff, 4/4 time signature. Measures 21-28 feature piano accompaniment with chords and melodic lines. Measure 21 has a whole rest in the right hand and a chord in the left hand. Measures 22-28 feature various chords and melodic lines in both hands.

29

Musical notation for measures 29-36, grand staff, 4/4 time signature. Measures 29-36 feature piano accompaniment with chords and melodic lines. Measure 29 has a whole rest in the right hand and a chord in the left hand. Measures 30-36 feature various chords and melodic lines in both hands.

37

Musical notation for measures 37-44, grand staff, 4/4 time signature. Measures 37-44 feature piano accompaniment with chords and melodic lines. Measure 37 has a whole rest in the right hand and a chord in the left hand. Measures 38-44 feature various chords and melodic lines in both hands.

45

Musical notation for measures 45-52, bass clef, 4/4 time signature. Measures 45-52 feature eighth-note chords: Bb2-Gb2, Ab2-Fb2, Gb2-Eb2, Fb2-Db2, Eb2-Cb2, D2-Bb1, C2-Ab1, and Bb1-Gb1.

54

Musical notation for measures 54-61, bass clef, 4/4 time signature. Measures 54-61 feature eighth-note chords: Bb2-Gb2, Ab2-Fb2, Gb2-Eb2, Fb2-Db2, Eb2-Cb2, D2-Bb1, C2-Ab1, and Bb1-Gb1.

63

71

80

89

98

107

115