

Cliff Richard - Some People 3

♩ = 120,000890

Drums



Guitar



Guit/Cho



Bass



Choir/aa



Melody



Voices



♩ = 120,000890

Flaeche



2

5

Drums

Guitar

Bass

Melody

Voices

Flaèche

Detailed description: This block contains the musical notation for measures 5 and 6. The score is arranged in six staves. The Drums staff shows a complex rhythmic pattern with various drum sounds. The Guitar staff features a series of eighth notes with slurs. The Bass staff has a melodic line with slurs and rests. The Melody staff shows a sequence of notes with a slur. The Voices staff has a few notes with a slur. The Flaèche staff has a long, sustained note with a slur.



7

Drums

Guitar

Bass

Melody

Voices

Flaèche

Detailed description: This block contains the musical notation for measures 7 and 8. The score is arranged in six staves. The Drums staff shows a complex rhythmic pattern with various drum sounds. The Guitar staff features a series of eighth notes with slurs. The Bass staff has a melodic line with slurs and rests. The Melody staff shows a sequence of notes with a slur. The Voices staff has a few notes with a slur. The Flaèche staff has a long, sustained note with a slur.

9

Drums

Guitar

Bass

Melody

Voices

Flaeche



11

Drums

Guitar

Bass

Melody

Voices

Flaeche

13

Drums

Guitar

Bass

Melody

Voices

Flaèche

This musical system covers measures 13 and 14. It features six staves: Drums, Guitar, Bass, Melody, Voices, and Flaèche. The Drums staff shows a complex rhythmic pattern with many 'x' marks. The Guitar staff has a rhythmic pattern of eighth notes with slurs. The Bass staff has a similar rhythmic pattern. The Melody staff is in a key with one flat and shows a sequence of notes. The Voices staff has a few notes. The Flaèche staff has long, sweeping lines with some notes.



15

Drums

Guitar

Bass

Melody

Voices

Flaèche

This musical system covers measures 15 and 16. It features six staves: Drums, Guitar, Bass, Melody, Voices, and Flaèche. The Drums staff continues the rhythmic pattern. The Guitar staff has a rhythmic pattern of eighth notes with slurs. The Bass staff has a similar rhythmic pattern. The Melody staff shows a sequence of notes. The Voices staff has a few notes. The Flaèche staff has long, sweeping lines with some notes.

17

Drums

Guitar

Bass

Melody

Voices

Flaèche

This musical system covers measures 17 and 18. The Drums part features a consistent pattern of eighth notes with 'x' marks above them, indicating a specific drum sound. The Guitar part consists of eighth-note chords with a slash through the notes, suggesting a strummed or percussive texture. The Bass line follows a similar eighth-note rhythmic pattern. The Melody part has a simple line of notes, including a whole note and a half note. The Voices part shows a vocal line with a long note in the second measure. The Flaèche part is represented by a large, multi-line graphic that spans across the two measures.



19

Drums

Guitar

Bass

Melody

Voices

Flaèche

This musical system covers measures 19 and 20. The Drums part continues with the same eighth-note pattern. The Guitar part shows a change in the chordal texture. The Bass line has a more active eighth-note pattern. The Melody part begins in measure 20 with a series of notes, including a sharp sign. The Voices part has a vocal line with a long note in measure 20. The Flaèche part continues with its multi-line graphic across the two measures.

21

Drums

Guitar

Bass

Melody

Voices

Flaèche

Detailed description: This block contains the musical notation for measures 21 and 22. The score is arranged in six staves. The Drums staff shows a complex rhythmic pattern with many 'x' marks indicating hits. The Guitar staff features a continuous eighth-note strumming pattern. The Bass staff has a melodic line with eighth notes and rests. The Melody staff shows a sequence of notes with a triplet of three eighth notes in the first measure of measure 22. The Voices staff has a long note in measure 21 and a whole note in measure 22. The Flaèche staff has a long note in measure 21 and a whole note in measure 22.



23

Drums

Guitar

Bass

Melody

Voices

Flaèche

Detailed description: This block contains the musical notation for measures 23 and 24. The score is arranged in six staves. The Drums staff continues with a complex rhythmic pattern. The Guitar staff continues with a continuous eighth-note strumming pattern. The Bass staff has a melodic line with eighth notes and rests. The Melody staff shows a sequence of notes ending with a sharp sign. The Voices staff has a long note in measure 23 and a whole note in measure 24. The Flaèche staff has a long note in measure 23 and a whole note in measure 24.

25

Drums

Guitar

Bass

Melody

Voices

Flaèche

Detailed description: This block contains the musical notation for measures 25 and 26. The score is arranged in six staves. The Drums staff shows a complex rhythmic pattern with many 'x' marks indicating cymbal hits. The Guitar staff features a series of eighth notes with a slash and a vertical line, representing a specific guitar technique. The Bass staff has a melodic line with eighth notes and rests. The Melody staff shows a sequence of notes with a sharp sign and a flat sign. The Voices staff has a single note with a fermata. The Flaèche staff has a long, sustained chord with a fermata.



27

Drums

Guitar

Bass

Melody

Flaèche

Detailed description: This block contains the musical notation for measures 27 and 28. The Drums staff continues with a similar rhythmic pattern. The Guitar staff has a consistent eighth-note pattern. The Bass staff has a melodic line with eighth notes and rests. The Melody staff shows a sequence of notes with a sharp sign and a flat sign. The Flaèche staff has a long, sustained chord with a fermata.

29

Drums

Guitar

Bass

Choir/aa

Melody

Voices

Flaeche



31

Drums

Guitar

Bass

Choir/aa

Voices

Flaeche

33

Drums

Guitar

Bass

Choir/aa

Voices

Flaeche



35

Drums

Guitar

Bass

Choir/aa

Voices

Flaeche

37

Drums

Guitar

Bass

Choir/aa

Melody

Voices

Flaèche

Detailed description: This system contains measures 37 and 38. The Drums part features a complex rhythmic pattern with many 'x' marks. The Guitar part has a rhythmic line with slurs. The Bass part has a steady eighth-note pattern. The Choir/aa part has a few notes. The Melody part has a few notes. The Voices part has a few notes. The Flaèche part has a few notes and a large oval shape.



39

Drums

Guitar

Bass

Melody

Voices

Flaèche

Detailed description: This system contains measures 39 and 40. The Drums part features a complex rhythmic pattern with many 'x' marks. The Guitar part has a rhythmic line with slurs. The Bass part has a steady eighth-note pattern. The Melody part has a few notes. The Voices part has a few notes. The Flaèche part has a few notes and a large oval shape.

41

Drums

Guitar

Bass

Melody

Voices

Flaeche



43

Drums

Guitar

Bass

Melody

Voices

Flaeche

45

Drums

Guitar

Bass

Melody

Voices

Flaèche

This musical system covers measures 45 and 46. The Drums part features a consistent rhythmic pattern of eighth notes. The Guitar part consists of a steady eighth-note strumming pattern. The Bass part plays a rhythmic line with eighth notes, including a key signature change to one sharp (F#) in measure 46. The Melody part is silent in measure 45 and begins in measure 46 with a sequence of notes: G4, A4, B4, C5, B4, A4, G4. The Voices part is silent in measure 45 and begins in measure 46 with notes: G3, A3, B3, C4, B3, A3, G3. The Flaèche part plays a chord of G2, B2, D3, E3 in measure 45 and a sustained chord of G2, B2, D3, E3 in measure 46.



47

Drums

Guitar

Bass

Melody

Voices

Flaèche

This musical system covers measures 47 and 48. The Drums part continues with the same eighth-note pattern. The Guitar part continues with the same eighth-note strumming pattern. The Bass part continues with eighth notes, including a key signature change to one flat (Bb) in measure 48. The Melody part continues with notes: G4, A4, B4, C5, B4, A4, G4. The Voices part continues with notes: G3, A3, B3, C4, B3, A3, G3. The Flaèche part plays a sustained chord of G2, B2, D3, E3 in measure 47 and a sustained chord of G2, B2, D3, E3 in measure 48.

49

Drums

Guitar

Bass

Melody

Voices

Flaeche



51

Drums

Guitar

Bass

Melody

Voices

Flaeche

53

Drums

Guitar

Bass

Melody

Flaeche



55

Drums

Guitar

Guit/Cho

Bass

Choir/aa

Melody

Flaeche

57

Drums

Guitar

Guit/Cho

Bass

Choir/aa

Melody

Flaèche

Detailed description: This system contains measures 57 and 58. The Drums part features a complex rhythmic pattern with 'x' marks above the staff. The Guitar part has a rhythmic pattern of eighth notes with accents. The Guit/Cho part shows chords with slurs. The Bass part has a rhythmic pattern of eighth notes. The Choir/aa part has a single note in measure 57 and a long note in measure 58. The Melody part has a rhythmic pattern of eighth notes. The Flaèche part shows chords with slurs.



59

Drums

Guitar

Guit/Cho

Bass

Choir/aa

Melody

Flaèche

Detailed description: This system contains measures 59 and 60. The Drums part features a complex rhythmic pattern with 'x' marks above the staff. The Guitar part has a rhythmic pattern of eighth notes with accents. The Guit/Cho part shows chords with slurs. The Bass part has a rhythmic pattern of eighth notes. The Choir/aa part has a long note in measure 59 and a melodic phrase in measure 60. The Melody part has a rhythmic pattern of eighth notes. The Flaèche part shows chords with slurs.

61

Drums

Guitar

Guit/Cho

Bass

Choir/aa

Melody

Flaèche



63

Drums

Guitar

Bass

Choir/aa

Melody

Voices

Flaèche

65

Drums

Guitar

Bass

Melody

Voices

Flaeche



67

Drums

Guitar

Bass

Melody

Voices

Flaeche

69

Drums

Guitar

Bass

Melody

Voices

Flaèche

Detailed description: This block contains the musical notation for measures 69 and 70. It features six staves: Drums (top), Guitar, Bass, Melody, Voices, and Flaèche (bottom). Measure 69 is marked with a '69' above the staff. The Drums staff shows a complex rhythmic pattern with 'x' marks. The Guitar staff has a series of chords with slash marks. The Bass staff has a rhythmic line with eighth notes. The Melody staff has a few notes with accidentals. The Voices staff has a single note. The Flaèche staff has a complex chordal structure with slurs.



71

Drums

Bass

Melody

Flaèche

Detailed description: This block contains the musical notation for measures 71 and 72. It features four staves: Drums, Bass, Melody, and Flaèche. Measure 71 is marked with a '71' above the staff. The Drums staff continues with a complex rhythmic pattern. The Bass staff has a rhythmic line with eighth notes. The Melody staff has a few notes with accidentals. The Flaèche staff has a complex chordal structure with slurs.

73

Drums

Guitar

Guit/Cho

Bass

Choir/aa

Melody

Voices

Flaeche

Detailed description: This system contains measures 73 and 74. The Drums part features a consistent rhythmic pattern of eighth notes with 'x' marks above them. The Guitar part has a melodic line with eighth notes and rests. The Guit/Cho part shows a chord progression with a long sustain. The Bass part has a rhythmic line with eighth notes and rests. The Choir/aa part has a single note with a long sustain. The Melody part has a short melodic phrase. The Voices part has a single note with a long sustain. The Flaeche part has a chord progression with a long sustain.



75

Drums

Guitar

Guit/Cho

Bass

Choir/aa

Flaeche

Detailed description: This system contains measures 75 and 76. The Drums part continues with the same rhythmic pattern. The Guitar part has a melodic line with eighth notes and rests. The Guit/Cho part shows a chord progression with a long sustain. The Bass part has a rhythmic line with eighth notes and rests. The Choir/aa part has a single note with a long sustain. The Flaeche part has a chord progression with a long sustain.

77

Drums

Guitar

Guit/Cho

Bass

Choir/aa

Flaeche

Detailed description: This system contains measures 77 through 80. The Drums part features a consistent rhythmic pattern of eighth notes with 'x' marks above them, indicating a specific drum sound. The Guitar part plays a rhythmic pattern of eighth notes with accents. The Guit/Cho part has a sustained chord with a fermata. The Bass part plays a melodic line with eighth notes and rests. The Choir/aa part has a melodic line with a fermata. The Flaeche part has a sustained chord with a fermata.



79

Drums

Guitar

Guit/Cho

Bass

Choir/aa

Flaeche

Detailed description: This system contains measures 79 through 82. The Drums part continues with the same rhythmic pattern. The Guitar part continues with the same rhythmic pattern. The Guit/Cho part has a sustained chord with a fermata. The Bass part continues with the same melodic line. The Choir/aa part has a melodic line with a fermata. The Flaeche part has a sustained chord with a fermata.

81

Drums

Guitar

Guit/Cho

Bass

Choir/aa

Melody

Voices

Flaeche



83

Drums

Guitar

Bass

Melody

Voices

Flaeche

85

Drums

Guitar

Bass

Melody

Voices

Flaèche

Detailed description: This system of music covers measures 85 and 86. The Drums part features a consistent rhythmic pattern of eighth notes. The Guitar part consists of eighth-note chords with a slash through the stem, indicating a specific strumming technique. The Bass part plays a steady eighth-note line. The Melody part is mostly silent in measure 85 and begins in measure 86 with a sequence of notes: G4, A4, B4, C5, B4, A4, G4. The Voices part is silent in measure 85 and begins in measure 86 with a sequence of notes: G4, A4, B4, C5, B4, A4, G4. The Flaèche part features a sustained chord in measure 85 and a similar sustained chord in measure 86.



87

Drums

Guitar

Bass

Melody

Voices

Flaèche

Detailed description: This system of music covers measures 87 and 88. The Drums part continues with the same eighth-note pattern. The Guitar part continues with eighth-note chords. The Bass part continues with eighth-note lines. The Melody part begins in measure 87 with a triplet of notes: G4, A4, B4, followed by C5, B4, A4, G4 in measure 88. The Voices part begins in measure 87 with a sequence of notes: G4, A4, B4, C5, B4, A4, G4. The Flaèche part features a sustained chord in measure 87 and a similar sustained chord in measure 88.

89

Drums

Guitar

Bass

Melody

Voices

Flaeche



91

Drums

Guitar

Bass

Melody

Voices

Flaeche

93

Drums

Guitar

Guit/Cho

Bass

Choir/aa

Flaèche

This musical system covers measures 93 and 94. It features six staves: Drums, Guitar, Guit/Cho, Bass, Choir/aa, and Flaèche. The Drums staff shows a consistent rhythmic pattern with 'x' marks above the notes. The Guitar staff has a melodic line with slurs and accents. The Guit/Cho staff has a few notes with slurs. The Bass staff has a rhythmic line with slurs. The Choir/aa staff has a long note with a slur. The Flaèche staff has a complex melodic line with slurs.



95

Drums

Guitar

Guit/Cho

Bass

Choir/aa

Melody

Flaèche

This musical system covers measures 95 and 96. It features seven staves: Drums, Guitar, Guit/Cho, Bass, Choir/aa, Melody, and Flaèche. The Drums staff continues the rhythmic pattern. The Guitar staff has a melodic line with slurs. The Guit/Cho staff has a few notes with slurs. The Bass staff has a rhythmic line with slurs. The Choir/aa staff has a long note with a slur. The Melody staff has a few notes with slurs. The Flaèche staff has a complex melodic line with slurs.

97

Drums

Guitar

Guit/Cho

Bass

Choir/aa

Melody

Flaèche

Detailed description: This block contains the musical notation for measures 97 and 98. It features seven staves: Drums (with a drum set icon), Guitar (with a treble clef and rhythmic notation), Guit/Cho (with a treble clef and chordal notation), Bass (with a bass clef and rhythmic notation), Choir/aa (with a treble clef and vocal line), Melody (with a treble clef and a few notes), and Flaèche (with a bass clef and chordal notation). A double bar line is present at the end of measure 98.



99

Drums

Guitar

Guit/Cho

Bass

Choir/aa

Melody

Flaèche

Detailed description: This block contains the musical notation for measures 99 and 100. It features seven staves: Drums (with a drum set icon), Guitar (with a treble clef and rhythmic notation), Guit/Cho (with a treble clef and chordal notation), Bass (with a bass clef and rhythmic notation), Choir/aa (with a treble clef and vocal line), Melody (with a treble clef and a few notes), and Flaèche (with a bass clef and chordal notation). A double bar line is present at the end of measure 100.

101

The image shows a musical score for a piece starting at measure 101. The score is arranged in a vertical staff system with the following parts from top to bottom: Drums, Guitar, Guit/Cho, Bass, Choir/aa, Melody, Voices, and Flaeche. The Drums part features a rhythmic pattern of eighth notes with 'x' marks above them, indicating a specific drum sound. The Guitar part has a melodic line with eighth notes and slurs. The Guit/Cho part is mostly silent with some initial notes. The Bass part has a melodic line with eighth notes and slurs. The Choir/aa part has a melodic line with a long slur. The Melody part has a melodic line with eighth notes and slurs. The Voices part is mostly silent. The Flaeche part has a melodic line with eighth notes and slurs.

Cliff Richard - Some People 3

Drums

♩ = 120,000898

Drums

4/4

5

9

13

17

21

25

29

32

35

V.S.

Drums

38

39

40

41

42

43

44

45

46

47

48

49

50

51

52

53

54

55

56

57

58

60

61

62

64

65

66

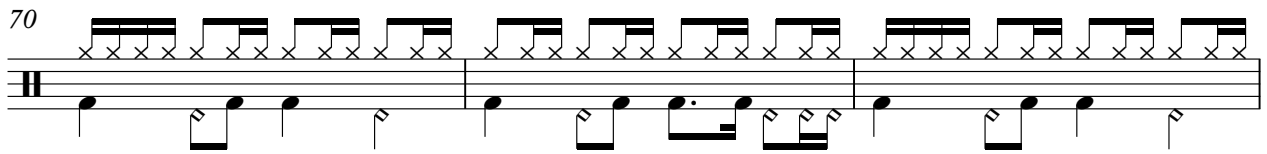
67

68

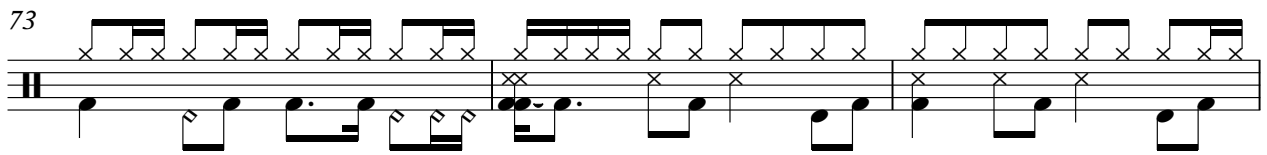
69

Drums

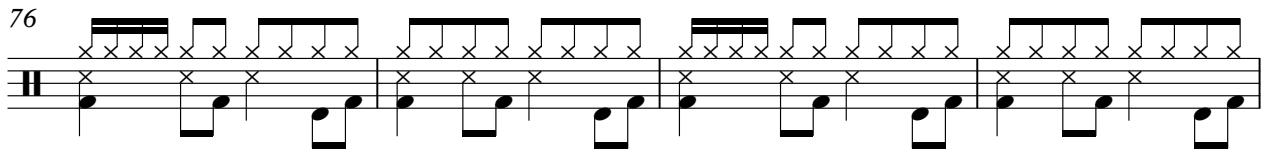
70



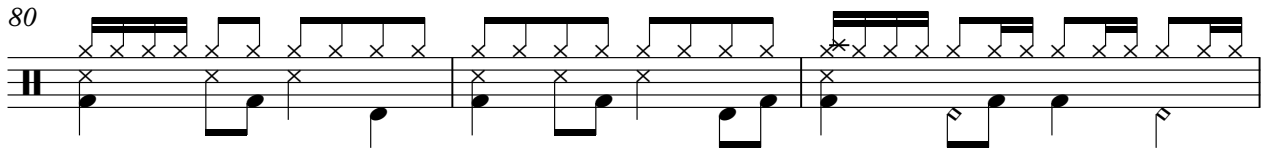
73



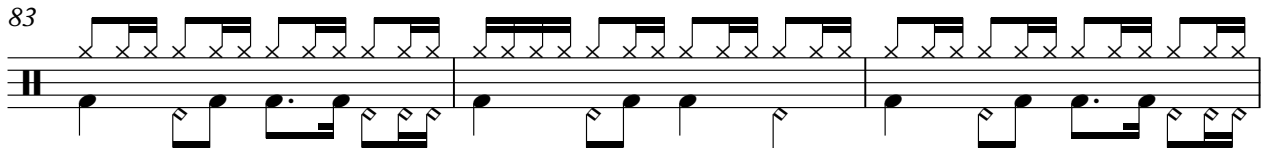
76



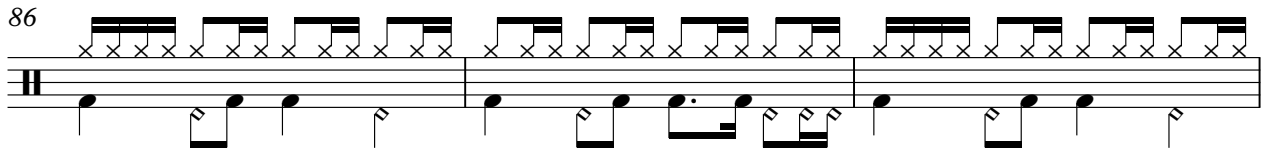
80



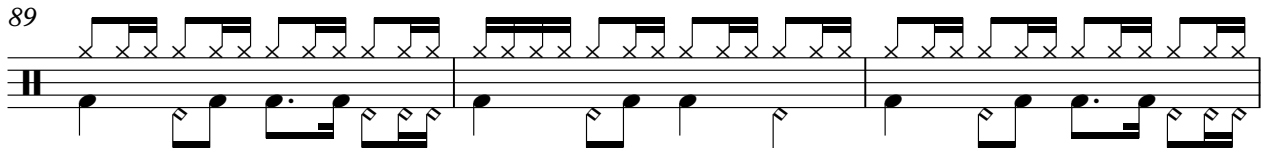
83



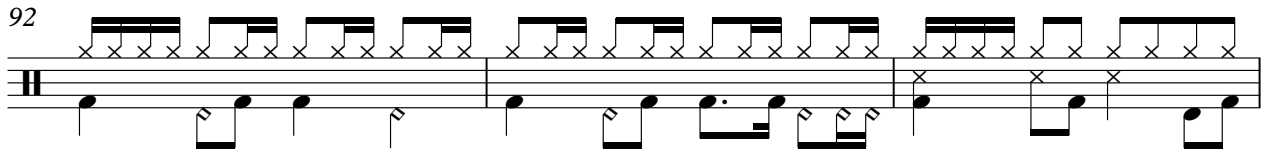
86



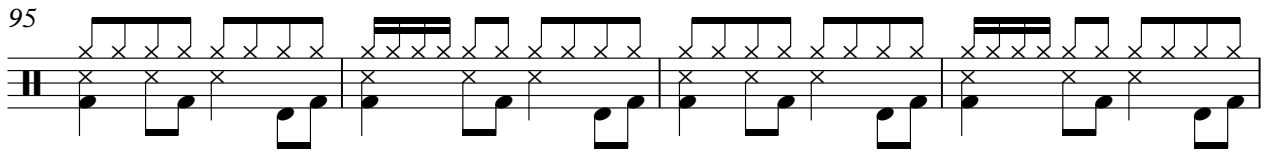
89



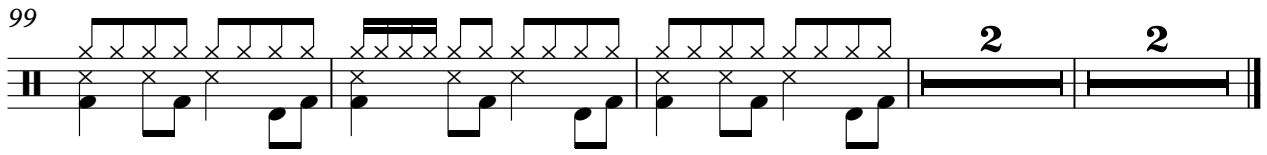
92



95



99



Cliff Richard - Some People 3

Guitar

♩ = 120,000898
Guitar 3

6

8

10

13

15

17

20

23

26

V.S.

29

Musical notation for guitar, measures 29-34. Measure 29 has a treble clef, key signature of one flat, and a series of eighth notes. Measures 30-34 show guitar chord diagrams with a curved line indicating a slide or bend.

35

Musical notation for guitar, measures 35-38. Measure 35 has a treble clef and a guitar chord diagram. Measures 36-38 show eighth notes.

39

Musical notation for guitar, measures 39-40. Measure 39 has a treble clef and eighth notes. Measure 40 has a treble clef and eighth notes.

41

Musical notation for guitar, measures 41-42. Measure 41 has a treble clef and eighth notes. Measure 42 has a treble clef and eighth notes.

43

Musical notation for guitar, measures 43-45. Measure 43 has a treble clef and eighth notes. Measure 44 has a treble clef and eighth notes. Measure 45 has a treble clef and eighth notes.

46

Musical notation for guitar, measures 46-48. Measure 46 has a treble clef and eighth notes. Measure 47 has a treble clef and eighth notes. Measure 48 has a treble clef and eighth notes.

49

Musical notation for guitar, measures 49-51. Measure 49 has a treble clef and eighth notes. Measure 50 has a treble clef and eighth notes. Measure 51 has a treble clef and eighth notes.

52

Musical notation for guitar, measures 52-54. Measure 52 has a treble clef, key signature of one flat, and eighth notes. Measure 53 has a treble clef, key signature of one flat, and eighth notes. Measure 54 has a treble clef, key signature of one flat, and eighth notes.

55

Musical notation for guitar, measures 55-56. Measure 55 has a treble clef, key signature of one flat, and eighth notes. Measure 56 has a treble clef, key signature of one flat, and eighth notes.

57

Musical notation for guitar, measures 57-58. Measure 57 has a treble clef and eighth notes. Measure 58 has a treble clef and eighth notes.

59



61



63



66



69



74



76



78



80



82



V.S.

84

86

88

90

92

94

96

98

100

101

2

2

Cliff Richard - Some People 3

Guit/Cho

♩ = 120,000898
Guit/Cho

55

60

10

75

81

11

96

99

2

2

Cliff Richard - Some People 3

Bass

♩ = 120,000898

Bass

3



V.S.

32



34



36



38



40



42



44



46



48



50



52



54



56



59



62



65



67



69



71



73



V.S.

76



79



82



84



86



88



90



92



94



97



100

Musical notation for bass guitar, measure 100. The notation is on a single staff with a bass clef and a key signature of one flat. It features a complex rhythmic pattern of eighth and sixteenth notes with various accidentals. The measure ends with a double bar line and a fermata-like symbol, with the number '2' written above it.

Cliff Richard - Some People 3

Choir/aa

♩ = 120,000896
Choir/aa

29

34

18

57

64

10

80

12

98

101

2

Cliff Richard - Some People 3

Melody

♩ = 120,000898
Melody 3

8

14

20

25

30

41

46



51



56



59



62



65



70



75



87



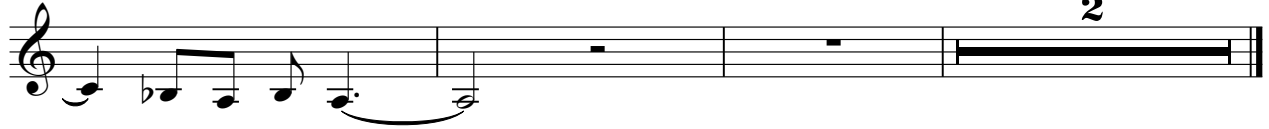
96



Melody

3

101



Cliff Richard - Some People 3

Voices

♩ = 120,000898
Voices 3

9

15

21

31

38

44

51

67

74

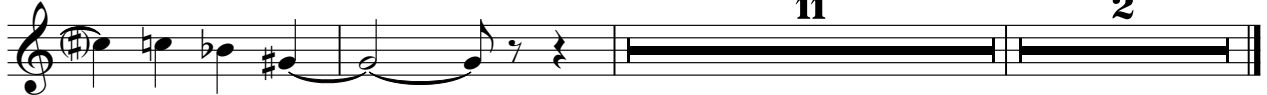
2

Voices

86



91



Cliff Richard - Some People 3

Flaeche

♩ = 120,000898

Flaeche 3

10

17

25

32

40

47

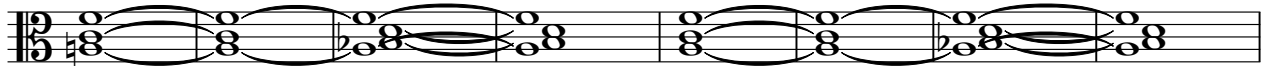
53

60

68

V.S.

74



82



91



99

