

Clue - Colonel Mustard

♩ = 136,000153

Musical score for the first system of 'Clue - Colonel Mustard'. It consists of seven staves. The top two staves are for 'Colonel Mustard' and '(Willow)', both in treble clef with a 16/8 time signature. The third staff is for 'Robert Aaron Eason' in bass clef with a 16/8 time signature, featuring triplets and a sextuplet. The fourth and fifth staves are for 'Composed by:' and 'Questions?' in bass clef with a 16/8 time signature. The bottom three staves are for 'Unknown', 'Sequenced by:', 'Comments?', and 'Concerns?' in bass clef with a 16/8 time signature. A tempo marking '♩ = 136,000153' is placed above the first staff.



Musical score for the second system of 'Clue - Colonel Mustard'. It consists of seven staves, continuing from the first system. The top two staves are for 'Colonel Mustard' and '(Willow)'. The third staff is for 'Robert Aaron Eason' with triplets and a sextuplet. The fourth and fifth staves are for 'Composed by:' and 'Questions?'. The bottom three staves are for 'Unknown', 'Sequenced by:', 'Comments?', and 'Concerns?'. A measure number '5' is written above the first staff of this system.

8

Colonel Mustard

(Willow)

Robert Aaron Eason

Composed by:

Questions?

Unknown

Sequenced by:

Comments?

Concerns?



12

Colonel Mustard

(Willow)

Robert Aaron Eason

Composed by:

Questions?

Unknown

Sequenced by:

Comments?

Concerns?

15

Colonel Mustard

(Willow)

Robert Aaron Eason

Composed by:

Questions?

Unknown

Sequenced by:

Comments?

Concerns?

The image displays a musical score for the song 'Colonel Mustard'. It consists of ten staves, each with a label on the left. The first two staves, 'Colonel Mustard' and '(Willow)', are in treble clef. The third staff, 'Robert Aaron Eason', is in a tenor clef. The remaining seven staves are in bass clef. The score is divided into three measures. The first measure contains the main melody for 'Colonel Mustard' and '(Willow)'. The second measure features a triplet of eighth notes in the 'Robert Aaron Eason' part and a triplet of eighth notes in the 'Composed by:' part. The third measure continues the melody and includes another triplet of eighth notes in the 'Composed by:' part. The 'Unknown' staff shows a sequence of notes, and the 'Concerns?' staff features a triplet of eighth notes. The score is enclosed in a large bracket on the left side.

Colonel Mustard

Clue - Colonel Mustard

♩ = 136,000153



(Willow)

Clue - Colonel Mustard

♩ = 136,000153



♩ = 136,000153

16/16

4

7

11

14

Composed by: Clue - Colonel Mustard

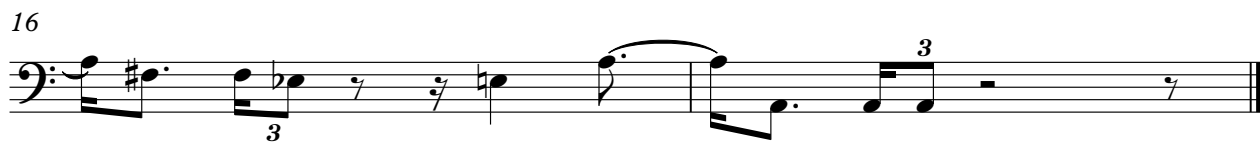
♩ = 136,000153



Questions?

Clue - Colonel Mustard

♩ = 136,000153



Unknown

Clue - Colonel Mustard

♩ = 136,000153



7



12



Sequenced by: Clue - Colonel Mustard

♩ = 136,000153



Clue - Colonel Mustard

Comments?

♩ = 136,000153

Musical notation for the first staff, measures 1-5. It begins with a treble clef, a key signature of one sharp (F#), and a 16/16 time signature. The notation includes various note values, rests, and slurs.

6

Musical notation for the second staff, measures 6-10. It begins with a bass clef and continues the piece with notes and rests.

11

Musical notation for the third staff, measures 11-13. It continues with a bass clef and various note values.

14

Musical notation for the fourth staff, measures 14-16. It concludes the piece with a bass clef and a double bar line.

Concerns?

Clue - Colonel Mustard

♩ = 136,000153

