

# Cranberries - Salvation (version 3)

♩ = 170,000092

Dolores

Brass Section

Drum

Saw

Guitare

Distorsion

Basse

Aahs

♩ = 170,000092

Dolores 2



5

Drum

Guitare

Distorsion

Basse

8

Dolores

Drum

Guitare

Distorsion

Basse

Dolores 2



11

Dolores

Drum

Guitare

Distorsion

Basse

Dolores 2

15

Dolores

Drum

Guitare

Distorsion

Basse

Dolores 2



19

Dolores

Drum

Guitare

Distorsion

Basse

Dolores 2

23

Dolores

Drum

Guitare

Distorsion

Basse

Dolores 2

Detailed description: This musical system covers measures 23, 24, and 25. The Dolores part (top) features a melodic line with eighth and quarter notes, including a slur over measures 23-24 and a fermata at the end of measure 25. The Drum part shows a consistent pattern of eighth notes on the snare and bass drum. The Guitare and Distorsion parts play a heavy, distorted chord progression with a key signature of one flat. The Basse part provides a steady eighth-note bass line. Dolores 2 (bottom) has a simple melodic line with a fermata at the end of measure 25.



26

Dolores

Drum

Saw

Guitare

Distorsion

Basse

Dolores 2

Detailed description: This musical system covers measures 26, 27, and 28. The Dolores part (top) continues the melodic line with a slur over measures 26-27 and a fermata at the end of measure 28. The Drum part maintains the eighth-note pattern. The Saw part (newly introduced) plays a simple chord progression with a key signature of one flat. The Guitare and Distorsion parts continue with the distorted chord progression. The Basse part continues with the eighth-note bass line. Dolores 2 (bottom) continues with a simple melodic line and a fermata at the end of measure 28.

29

Dolores

Drum

Saw

Guitare

Distorsion

Basse

Dolores 2



32

Dolores

Drum

Saw

Guitare

Distorsion

Basse

Dolores 2

35

Dolores

Brass Section

Drum

Saw

Guitare

Distorsion

Basse

Dolores 2



38

Dolores

Drum

Saw

Guitare

Distorsion

Basse

Dolores 2

42

Dolores

Drum

Guitare

Distorsion

Basse

Aahs

Dolores 2



45

Dolores

Drum

Guitare

Distorsion

Basse

Aahs

Dolores 2

48

Dolores

Drum

Guitare

Distorsion

Basse

Aahs

Dolores 2



51

Dolores

Drum

Guitare

Distorsion

Basse

Dolores 2



55

Dolores

Drum

Guitare

Distorsion

Basse

Dolores 2



59

Dolores

Drum

Guitare

Distorsion

Basse

Aahs

Dolores 2

63

Dolores

Drum

Guitare

Distorsion

Basse

Dolores 2



66

Dolores

Drum

Saw

Guitare

Distorsion

Basse

Dolores 2

69

Dolores

Drum

Saw

Guitare

Distorsion

Basse

Dolores 2



72

Dolores

Brass Section

Drum

Saw

Guitare

Distorsion

Basse

Dolores 2

75

Brass Section

Drum

Saw

Guitare

Distorsion

Basse



78

Brass Section

Drum

Saw

Guitare

Distorsion

Basse

81

Dolores

Brass Section

Drum

Saw

Guitare

Distorsion

Basse

Dolores 2



84

Dolores

Drum

Saw

Guitare

Distorsion

Basse

Dolores 2

87

Dolores

Drum

Saw

Guitare

Distorsion

Basse

Dolores 2



90

Dolores

Drum

Saw

Guitare

Distorsion

Basse

Dolores 2

93

Dolores

Drum

Saw

Guitare

Distorsion

Basse

Dolores 2



96

Dolores

Drum

Saw

Guitare

Distorsion

Basse

Dolores 2

99

Drum

Guitare

Distorsion

Basse



♩ = 170,000092

9

14

19

24

29

34

38

40

43



49



55



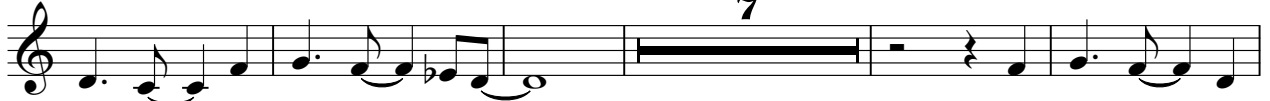
61



66



72



84



89



93



96



3

Brass Section

Cranberries - Salvation (version 3)

♩ = 170,000092

36 36

Musical notation for measures 36 and 37. The key signature is one sharp (F#) and the time signature is 4/4. Measure 36 consists of a whole rest. Measure 37 consists of a whole note chord (F#4, A4, C5).

75

Musical notation for measures 75, 76, 77, and 78. The key signature is one sharp (F#) and the time signature is 4/4. Each measure contains a quarter note followed by an eighth rest, then a quarter note, then an eighth rest, and finally a quarter note. The notes are: F#4, A4, C5, F#4, A4, C5, F#4, A4, C5, F#4, A4, C5, F#4, A4, C5, F#4, A4, C5.

79

Musical notation for measures 79 and 80. The key signature is one sharp (F#) and the time signature is 4/4. Each measure contains a quarter note followed by an eighth rest, then a quarter note, then an eighth rest, and finally a quarter note. The notes are: F#4, A4, C5, F#4, A4, C5, F#4, A4, C5, F#4, A4, C5.

81

19

Musical notation for measures 81 and 82. The key signature is one sharp (F#) and the time signature is 4/4. Measure 81 contains a quarter note followed by an eighth rest, then a quarter note, then an eighth rest, and finally a quarter note. The notes are: F#4, A4, C5, F#4, A4, C5, F#4, A4, C5. Measure 82 consists of a whole rest.

# Cranberries - Salvation (version 3)

Drum

♩ = 170,000092

Measures 1-4: The drum part begins with a 4/4 time signature. Measure 1 features a snare drum hit on the first beat. The subsequent measures consist of a steady eighth-note pattern on the snare drum, with a consistent bass drum accompaniment.

Measures 5-7: Continuation of the eighth-note snare pattern and bass drum accompaniment.

Measures 8-10: Measures 8 and 9 continue the eighth-note pattern. Measure 10 introduces a change with a snare drum hit on the first beat, marked with an asterisk (\*), and a cymbal crash on the second beat.

Measures 11-14: Measures 11 and 12 feature a snare drum hit on the first beat, marked with an asterisk (\*). Measures 13 and 14 continue with the eighth-note snare pattern.

Measures 15-17: Continuation of the eighth-note snare pattern and bass drum accompaniment.

Measures 18-21: Measures 18 and 19 feature a snare drum hit on the first beat, marked with an asterisk (\*). Measures 20 and 21 continue with the eighth-note snare pattern.

Measures 22-24: Continuation of the eighth-note snare pattern and bass drum accompaniment.

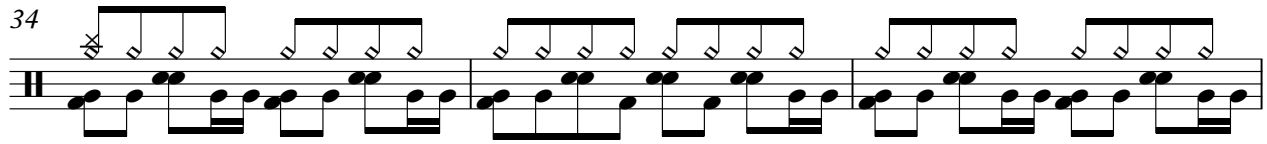
Measures 25-27: Measures 25 and 26 feature a snare drum hit on the first beat, marked with an asterisk (\*). Measure 27 continues with the eighth-note snare pattern.

Measures 28-30: Continuation of the eighth-note snare pattern and bass drum accompaniment.

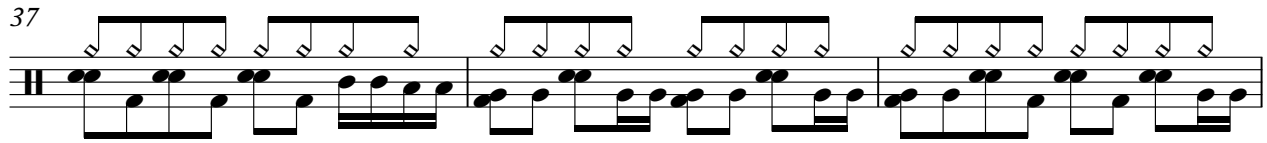
Measures 31-34: Measures 31 and 32 continue the eighth-note snare pattern. Measures 33 and 34 feature a snare drum hit on the first beat, marked with an asterisk (\*), and a cymbal crash on the second beat.

V.S.

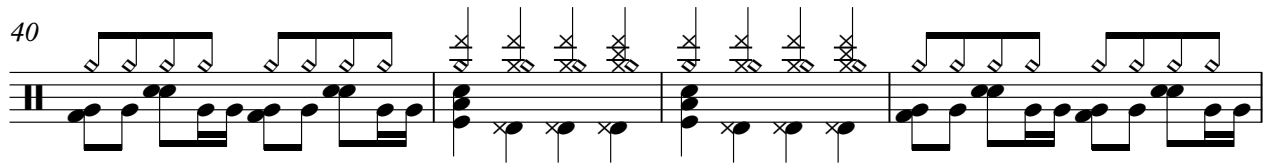
34



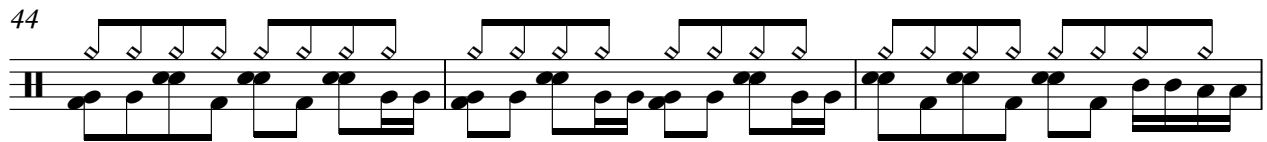
37



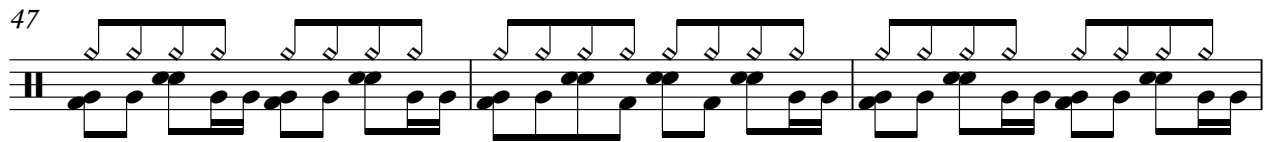
40



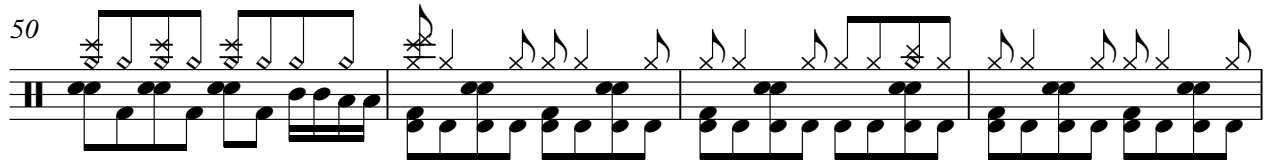
44



47



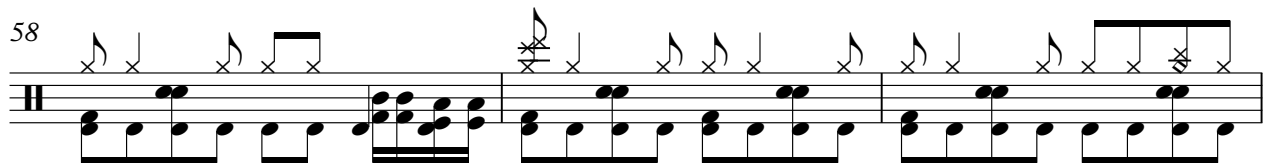
50



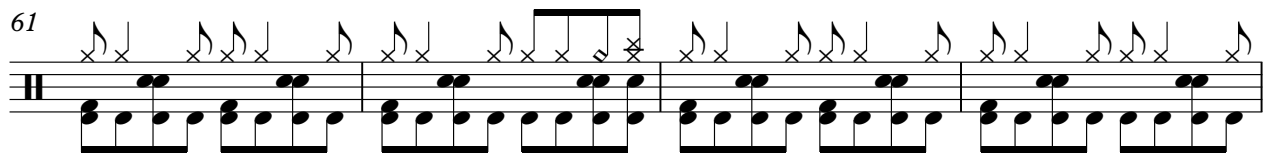
54



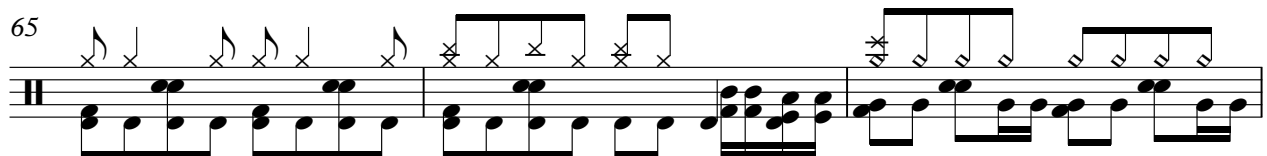
58



61



65



Drum

68

Musical notation for drum part 68, consisting of two staves. The top staff contains a series of eighth notes with stems pointing down, and the bottom staff contains a series of eighth notes with stems pointing up. The pattern is consistent across the entire staff.

71

Musical notation for drum part 71, consisting of two staves. The top staff contains a series of eighth notes with stems pointing down, and the bottom staff contains a series of eighth notes with stems pointing up. The pattern is consistent across the entire staff.

74

Musical notation for drum part 74, consisting of two staves. The top staff contains eighth notes with stems pointing down, some marked with an asterisk (\*). The bottom staff contains eighth notes with stems pointing up.

77

Musical notation for drum part 77, consisting of two staves. The top staff contains a series of eighth notes with stems pointing down, and the bottom staff contains a series of eighth notes with stems pointing up. The pattern is consistent across the entire staff.

80

Musical notation for drum part 80, consisting of two staves. The top staff contains eighth notes with stems pointing down, some marked with an asterisk (\*). The bottom staff contains eighth notes with stems pointing up.

83

Musical notation for drum part 83, consisting of two staves. The top staff contains eighth notes with stems pointing down, some marked with an asterisk (\*). The bottom staff contains eighth notes with stems pointing up.

86

Musical notation for drum part 86, consisting of two staves. The top staff contains a series of eighth notes with stems pointing down, and the bottom staff contains a series of eighth notes with stems pointing up. The pattern is consistent across the entire staff.

89

Musical notation for drum part 89, consisting of two staves. The top staff contains eighth notes with stems pointing down, some marked with an asterisk (\*). The bottom staff contains eighth notes with stems pointing up.

92

Musical notation for drum part 92, consisting of two staves. The top staff contains a series of eighth notes with stems pointing down, and the bottom staff contains a series of eighth notes with stems pointing up. The pattern is consistent across the entire staff.

95

Musical notation for drum part 95, consisting of two staves. The top staff contains a series of eighth notes with stems pointing down, and the bottom staff contains a series of eighth notes with stems pointing up. The pattern is consistent across the entire staff.

V.S.



# Cranberries - Salvation (version 3)

Saw

♩ = 170,000092

25

31

38

25

68

75

79

83

90

95

3



# Cranberries - Salvation (version 3)

Guitare

♩ = 170,000092

5

9

13

17

21

25

29

33

37

V.S.



81



85



89



93



97



# Cranberries - Salvation (version 3)

Distorsion

♩ = 170,000092

5

9

13

17

21

25

29

33

37

V.S.

41



45



49



53



57



61



65



69



73



77



81



85



89



93



97



# Cranberries - Salvation (version 3)

Basse

♩ = 170,000092



5



9



13



17



21



25



29



33



37



V.S.

41



45



49



53



57



61



65



69



73



77









♩ = 170,000092

9

14

20

25

31

36

39

