

Cranberries - Zobi

0.0"
1.1,00
The Cranberries "Zombie"

♩ = 204,999954

Standard Drums

Muted Guitar

Chorus Guitar

Overdrive Guitar

Overdrive Guitar

Fingered Bass

Melody

Background Vocals

Melody

♩ = 204,999954

Detailed description: This block contains the main musical score for the song 'Zobi'. It consists of ten staves. The top staff is for Standard Drums, followed by Muted Guitar, Chorus Guitar, and two Overdrive Guitar staves. Below these are Fingered Bass, Melody (treble clef), Background Vocals, and another Melody (bass clef) staff. The Chorus Guitar staff contains the primary guitar melody. The tempo is marked as ♩ = 204,999954. The key signature is one sharp (F#) and the time signature is 4/4.



5

Chorus Guitar

Detailed description: This block shows a continuation of the Chorus Guitar staff, starting at measure 5. The notation continues with various chords and melodic lines in the key of D major (one sharp).

8

Standard Drums

Chorus Guitar

Overdrive Guitar

Fingered Bass



11

Standard Drums

Chorus Guitar

Overdrive Guitar

Fingered Bass



13

Standard Drums

Chorus Guitar

Overdrive Guitar

Fingered Bass

15

Standard Drums

Chorus Guitar

Overdrive Guitar

Fingered Bass



17

Standard Drums

Chorus Guitar

Overdrive Guitar

Fingered Bass



20

Standard Drums

Chorus Guitar

Overdrive Guitar

Fingered Bass

23

Standard Drums

Chorus Guitar

Overdrive Guitar

Fingered Bass

Detailed description: This musical score covers measures 23, 24, and 25. The Standard Drums part features a consistent rhythmic pattern with snare and bass drum hits. The Chorus Guitar part plays a melodic line with some bends and a final note in measure 25. The Overdrive Guitar part provides a rhythmic accompaniment with a steady eighth-note pattern. The Fingered Bass part plays a simple bass line with quarter notes and rests.



26

Standard Drums

Muted Guitar

Chorus Guitar

Overdrive Guitar

Fingered Bass

Detailed description: This musical score covers measures 26, 27, and 28. The Standard Drums part continues with a similar rhythmic pattern. The Muted Guitar part plays a rhythmic accompaniment with a steady eighth-note pattern. The Chorus Guitar part plays sustained chords, with some notes held across measures. The Overdrive Guitar part plays sustained chords, with some notes held across measures. The Fingered Bass part plays a simple bass line with quarter notes and rests.

29

Standard Drums

Muted Guitar

Chorus Guitar

Overdrive Guitar

Fingered Bass



32

Standard Drums

Muted Guitar

Chorus Guitar

Overdrive Guitar

Fingered Bass

Melody

Melody

38.8"
34.1,00
Verse 1

35

Standard Drums

Chorus Guitar

Overdrive Guitar

Fingered Bass

Melody

Melody



38

Standard Drums

Chorus Guitar

Fingered Bass

Melody

Melody

41

Standard Drums

Chorus Guitar

Fingered Bass

Melody

Melody



44

Standard Drums

Chorus Guitar

Fingered Bass

Melody

Melody

47

Standard Drums

Chorus Guitar

Fingered Bass

Melody

Melody

Detailed description: This system contains measures 47, 48, and 49. The Standard Drums part features a consistent rhythmic pattern of eighth notes with 'x' marks above them, indicating cymbal hits. The Chorus Guitar part has a melodic line with some rests and a final chord. The Fingered Bass part plays a steady eighth-note bass line. The upper Melody part (treble clef) has a simple melodic line with some rests. The lower Melody part (bass clef) plays a series of chords, mostly triads.



57.6"
50.1,00
Ref 1

50

Standard Drums

Muted Guitar

Chorus Guitar

Fingered Bass

Melody

Melody

Detailed description: This system contains measures 50, 51, and 52. The Standard Drums part continues with a similar rhythmic pattern. The Muted Guitar part plays a rhythmic pattern of eighth notes with a muted sound. The Chorus Guitar part has a melodic line with some rests and a final chord. The Fingered Bass part plays a steady eighth-note bass line. The upper Melody part (treble clef) has a simple melodic line with some rests. The lower Melody part (bass clef) plays a series of chords, mostly triads.

53

Standard Drums

Muted Guitar

Chorus Guitar

Fingered Bass

Melody

Melody



56

Standard Drums

Muted Guitar

Chorus Guitar

Fingered Bass

Melody

Melody

59

Standard Drums

Muted Guitar

Chorus Guitar

Fingered Bass

Melody

Melody



62

Standard Drums

Muted Guitar

Chorus Guitar

Fingered Bass

Melody

Melody

1'16.4"
66.1,00
Ref 2

65

Standard Drums

A drum staff with a double bar line at the beginning. It contains a complex rhythmic pattern with various note values, rests, and accents, including a triplet of eighth notes.

Muted Guitar

A guitar staff in treble clef with a key signature of one sharp (F#). It features a rhythmic pattern of eighth notes with a muted sound (indicated by an 'x' over the notes) in the first measure, followed by rests.

Chorus Guitar

A guitar staff in treble clef with a key signature of one sharp (F#). It contains a complex, multi-measure chordal pattern with various note values and articulations.

Overdrive Guitar

A guitar staff in treble clef with a key signature of one sharp (F#). It features a rhythmic pattern of eighth notes with a distorted or overdriven sound, indicated by a 'z' over the notes.

Overdrive Guitar

A guitar staff in treble clef with a key signature of one sharp (F#). It contains a simple rhythmic pattern of eighth notes with a distorted or overdriven sound, indicated by a 'z' over the notes.

Fingered Bass

A bass staff in bass clef with a key signature of one sharp (F#). It contains a simple rhythmic pattern of eighth notes.

Melody

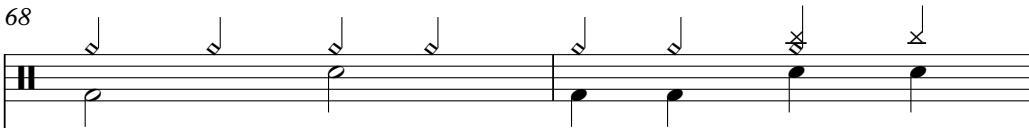
A melody staff in treble clef with a key signature of one sharp (F#). It features a simple melodic line with a few notes and a long note with a slur.

Melody

A melody staff in bass clef with a key signature of one sharp (F#). It features a simple melodic line with a few notes and a long note with a slur.

68

Standard Drums



Chorus Guitar



Overdrive Guitar




Fingered Bass



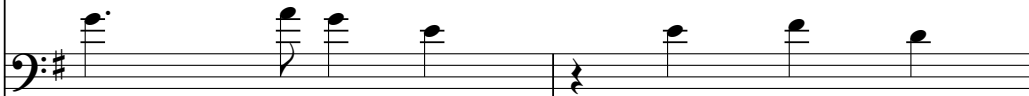
Melody



Background Vocals



Melody



70

Standard Drums

Chorus Guitar

Overdrive Guitar

Fingered Bass

Melody

Background Vocals

Melody



72

Standard Drums

Chorus Guitar

Overdrive Guitar

Fingered Bass

Melody

Melody

75

Standard Drums

Chorus Guitar

Overdrive Guitar

Fingered Bass

Melody

Melody



77

Standard Drums

Chorus Guitar

Overdrive Guitar

Fingered Bass

Melody

Background Vocals

Melody

79

Standard Drums

Chorus Guitar

Overdrive Guitar

Fingered Bass

Melody

Melody



1'35.2"
82.1,00
Bridge

81

Standard Drums

Chorus Guitar

Overdrive Guitar

Fingered Bass

Melody

Background Vocals

Melody

Standard Drums

Musical notation for Standard Drums, showing a sequence of rhythmic patterns on a five-line staff. The notation includes various drum symbols such as quarter notes, eighth notes, and rests, with some notes marked with 'x' or asterisks to indicate specific drum sounds.

Chorus Guitar

Musical notation for Chorus Guitar, featuring a series of chords and melodic lines in a treble clef. The notation includes various chord symbols and melodic fragments, with some notes marked with 'z' for bends or 'x' for mutes.

Overdrive Guitar

Musical notation for Overdrive Guitar, showing a series of chords and melodic lines in a treble clef. The notation includes various chord symbols and melodic fragments, with some notes marked with 'z' for bends or 'x' for mutes.

Fingered Bass

Musical notation for Fingered Bass, showing a series of notes in a bass clef. The notation includes various note values and rests, with some notes marked with 'z' for bends or 'x' for mutes.

Melody

Musical notation for Melody, showing a series of notes in a treble clef. The notation includes various note values and rests, with some notes marked with 'z' for bends or 'x' for mutes.

Background Vocals

Musical notation for Background Vocals, showing a series of notes in a treble clef. The notation includes various note values and rests, with some notes marked with 'z' for bends or 'x' for mutes.

Melody

Musical notation for Melody, showing a series of notes in a bass clef. The notation includes various note values and rests, with some notes marked with 'z' for bends or 'x' for mutes.

85

Standard Drums

Standard Drums staff showing a drum pattern with various rhythmic values and accents.

Chorus Guitar

Chorus Guitar staff showing a complex chordal and melodic line.

Overdrive Guitar

Overdrive Guitar staff showing a rhythmic, distorted guitar line.

Fingered Bass

Fingered Bass staff showing a simple bass line.

Melody

Melody staff showing a simple melodic line.

Background Vocals

Background Vocals staff showing a vocal line with a melodic phrase.

Melody

Melody staff showing a simple melodic line.

87

Standard Drums

Chorus Guitar

Overdrive Guitar

Fingered Bass

Melody

Background Vocals

Melody

89

Standard Drums

Muted Guitar

Chorus Guitar

Overdrive Guitar

Fingered Bass

Melody

Background Vocals

Melody



92

Standard Drums

Muted Guitar

Chorus Guitar

Overdrive Guitar

Overdrive Guitar

Fingered Bass

95

Standard Drums

Muted Guitar

Chorus Guitar

Overdrive Guitar

Fingered Bass

Melody



1'54.1"
98.1,00
Verse 2

98

Standard Drums

Muted Guitar

Chorus Guitar

Overdrive Guitar

Fingered Bass

Melody

Melody

101

Standard Drums

Muted Guitar

Chorus Guitar

Overdrive Guitar

Fingered Bass

Melody

Melody

Detailed description: This musical score block covers measures 101 to 103. It features seven staves. The Standard Drums staff shows a consistent rhythmic pattern with 'x' marks above notes. The Muted Guitar staff has eighth notes with stems pointing down. The Chorus Guitar staff has sustained chords. The Overdrive Guitar staff is mostly silent. The Fingered Bass staff has a steady eighth-note bass line. The two Melody staves (treble and bass clef) have simple eighth-note and quarter-note lines.



104

Standard Drums

Muted Guitar

Chorus Guitar

Fingered Bass

Melody

Melody

Detailed description: This musical score block covers measures 104 to 106. It features seven staves. The Standard Drums staff continues the rhythmic pattern. The Muted Guitar staff has eighth notes with stems pointing down. The Chorus Guitar staff has sustained chords. The Fingered Bass staff has a steady eighth-note bass line. The two Melody staves (treble and bass clef) have simple eighth-note and quarter-note lines.

107

Standard Drums

Muted Guitar

Chorus Guitar

Fingered Bass

Melody

Melody



110

Standard Drums

Muted Guitar

Chorus Guitar

Fingered Bass

Melody

Melody

2'12.9"
114.1,00
Ref 1

113

Standard Drums

Muted Guitar

Chorus Guitar

Fingered Bass

Melody

Melody

Detailed description: This block contains the musical score for measures 113, 114, and 115. It features six staves: Standard Drums, Muted Guitar, Chorus Guitar, Fingered Bass, and two Melody staves. The key signature is one sharp (F#). The drums play a consistent pattern of eighth and sixteenth notes. The muted guitar plays a rhythmic pattern of eighth notes. The chorus guitar plays sustained chords. The fingered bass plays a simple eighth-note line. The two melody staves show a vocal line in the treble clef and a bass line in the bass clef.



116

Standard Drums

Muted Guitar

Chorus Guitar

Fingered Bass

Melody

Melody

Detailed description: This block contains the musical score for measures 116, 117, and 118. It features six staves: Standard Drums, Muted Guitar, Chorus Guitar, Fingered Bass, and two Melody staves. The key signature is one sharp (F#). The drums play a consistent pattern of eighth and sixteenth notes. The muted guitar plays a rhythmic pattern of eighth notes. The chorus guitar plays sustained chords. The fingered bass plays a simple eighth-note line. The two melody staves show a vocal line in the treble clef and a bass line in the bass clef.

119

Standard Drums

Muted Guitar

Chorus Guitar

Fingered Bass

Melody

Melody



122

Standard Drums

Muted Guitar

Chorus Guitar

Fingered Bass

Melody

Melody

125

Standard Drums

Muted Guitar

Chorus Guitar

Fingered Bass

Melody

Melody



128

Standard Drums

Muted Guitar

Chorus Guitar

Overdrive Guitar

Fingered Bass

Melody

Melody

2'31.7"
130.1,00
Ref 2

131

Standard Drums

Chorus Guitar

Overdrive Guitar

Fingered Bass

Melody

Melody

Detailed description: This musical score block covers measures 131 and 132. It features six staves. The top staff is for Standard Drums, showing a consistent rhythmic pattern of quarter notes. The Chorus Guitar staff uses a treble clef and a key signature of one sharp (F#), playing a complex, multi-measure chordal figure. The Overdrive Guitar staff also uses a treble clef and F# key signature, playing a rhythmic pattern of eighth notes with slurs. The Fingered Bass staff uses a bass clef and F# key signature, playing a simple bass line of quarter notes. The two Melody staves (treble and bass clefs) provide a vocal line with quarter notes and rests.



133

Standard Drums

Chorus Guitar

Overdrive Guitar

Fingered Bass

Melody

Background Vocals

Melody

Detailed description: This musical score block covers measures 133 and 134. It features seven staves. The Standard Drums staff continues the rhythmic pattern from the previous block. The Chorus Guitar staff continues its complex chordal figure. The Overdrive Guitar staff continues its eighth-note rhythmic pattern. The Fingered Bass staff continues its quarter-note bass line. The Melody staff (treble clef) continues the vocal line. The Background Vocals staff (treble clef) shows a vocal line with rests and notes. The bottom Melody staff (bass clef) continues the bass line.

135

Standard Drums

Chorus Guitar

Overdrive Guitar

Fingered Bass

Melody

Melody

Detailed description: This musical score block covers measures 135 and 136. It features six staves: Standard Drums, Chorus Guitar, Overdrive Guitar, Fingered Bass, and two Melody staves. The key signature is one sharp (F#). The drums play a steady quarter-note pattern. The Chorus Guitar plays a series of chords, some with a double bar line and a star symbol above them. The Overdrive Guitar plays a rhythmic pattern of eighth notes. The Fingered Bass plays a simple quarter-note line. The two Melody staves show a vocal or instrumental line with some rests and a final note in the second measure.



137

Standard Drums

Chorus Guitar

Overdrive Guitar

Fingered Bass

Melody

Melody

Detailed description: This musical score block covers measures 137 and 138. It features six staves: Standard Drums, Chorus Guitar, Overdrive Guitar, Fingered Bass, and two Melody staves. The key signature is one sharp (F#). The drums play a steady quarter-note pattern. The Chorus Guitar plays a series of chords, some with a double bar line and a star symbol above them. The Overdrive Guitar plays a rhythmic pattern of eighth notes. The Fingered Bass plays a simple quarter-note line. The two Melody staves show a vocal or instrumental line with some rests and a final note in the second measure.

140

Standard Drums

Chorus Guitar

Overdrive Guitar

Fingered Bass

Melody

Background Vocals

Melody

142

Standard Drums

Chorus Guitar

Overdrive Guitar

Fingered Bass

Melody

Background Vocals

Melody



144

Standard Drums

Chorus Guitar

Overdrive Guitar

Fingered Bass

Melody

Melody

2'50.5"
146.1,00
Bridge

146

Standard Drums

Chorus Guitar

Overdrive Guitar

Fingered Bass

Melody

Melody



148

Standard Drums

Chorus Guitar

Overdrive Guitar

Fingered Bass

Melody

Melody

150

Standard Drums

Chorus Guitar

Overdrive Guitar

Fingered Bass

Melody

Melody



152

Standard Drums

Chorus Guitar

Overdrive Guitar

Fingered Bass

Melody

Melody

154

Standard Drums

Chorus Guitar

Overdrive Guitar

Fingered Bass



156

Standard Drums

Chorus Guitar

Overdrive Guitar

Fingered Bass



158

Standard Drums

Chorus Guitar

Overdrive Guitar

Fingered Bass

160

Standard Drums

Chorus Guitar

Overdrive Guitar

Overdrive Guitar

Fingered Bass



163

Standard Drums

Overdrive Guitar

Fingered Bass



166

Standard Drums

Overdrive Guitar

Fingered Bass

169

Standard Drums

Chorus Guitar

Overdrive Guitar

Fingered Bass



172

Standard Drums

Chorus Guitar

Overdrive Guitar

Fingered Bass



175

Standard Drums

Chorus Guitar

Overdrive Guitar

Fingered Bass

178

Standard Drums

Chorus Guitar

Overdrive Guitar

Overdrive Guitar

Fingered Bass



180

Standard Drums

Chorus Guitar

Overdrive Guitar

Overdrive Guitar

Fingered Bass

182

Standard Drums

Chorus Guitar

Overdrive Guitar

Overdrive Guitar

Fingered Bass



184

Standard Drums

Chorus Guitar

Overdrive Guitar

Overdrive Guitar

Fingered Bass

3'37.6"
186.1,00
Instrument 2

187

Standard Drums

Chorus Guitar

Overdrive Guitar

Overdrive Guitar

Fingered Bass



189

Standard Drums

Chorus Guitar

Overdrive Guitar

Overdrive Guitar

Fingered Bass

191

Standard Drums

Chorus Guitar

Overdrive Guitar

Overdrive Guitar

Fingered Bass



193

Standard Drums

Chorus Guitar

Overdrive Guitar

Overdrive Guitar

Fingered Bass

195

Standard Drums

Chorus Guitar

Overdrive Guitar

Overdrive Guitar

Fingered Bass



197

Standard Drums

Chorus Guitar

Overdrive Guitar

Overdrive Guitar

Fingered Bass

199

Standard Drums

Chorus Guitar

Overdrive Guitar

Overdrive Guitar

Fingered Bass



201

3'56.4"
202.1,00
Ending

Standard Drums

Chorus Guitar

Overdrive Guitar

Overdrive Guitar

Fingered Bass

204

Standard Drums

Chorus Guitar

Overdrive Guitar

Fingered Bass

Detailed description: This system covers measures 204 to 206. The Standard Drums part features a steady rhythm with snare and bass drum hits. The Chorus and Overdrive Guitar parts play sustained chords, with the Overdrive guitar having a longer sustain. The Fingered Bass part plays a rhythmic eighth-note line.



207

Standard Drums

Overdrive Guitar

Fingered Bass

Detailed description: This system covers measures 207 to 209. The drum pattern continues. The Overdrive Guitar part has a shorter sustain than in the previous system. The Fingered Bass part continues its eighth-note line.



210

Standard Drums

Fingered Bass

Detailed description: This system covers measures 210 and 211. The Chorus and Overdrive Guitar parts are not present in this system. The drum pattern and bass line continue.



212

Standard Drums

Fingered Bass

Detailed description: This system covers measures 212 and 213. The drum pattern and bass line continue, ending with a double bar line.

Cranberries - Zobi

Standard Drums

♩ = 204,999954

8

13

19

25

29

33

37

41

45

49

V.S.

The image displays a drum score for the song 'Zobi' by Cranberries. It consists of ten staves of music, each representing a measure. The first staff is marked with a tempo of 204,999954 and a measure number of 8. The notation includes various drum symbols such as eighth notes, quarter notes, and rests, along with specific drum kit indicators like 'x' for cymbals and 'o' for snare. The score is divided into measures 8, 13, 19, 25, 29, 33, 37, 41, 45, and 49. The notation is written on a five-line staff with a double bar line at the beginning of each measure. The overall style is a standard drum notation for a rock song.

53

57

61

65

70

76

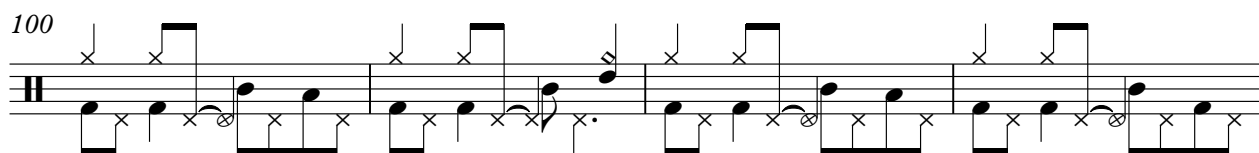
82

88

92

96

100




104



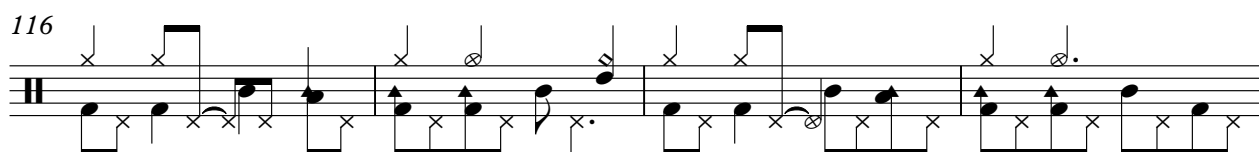
108



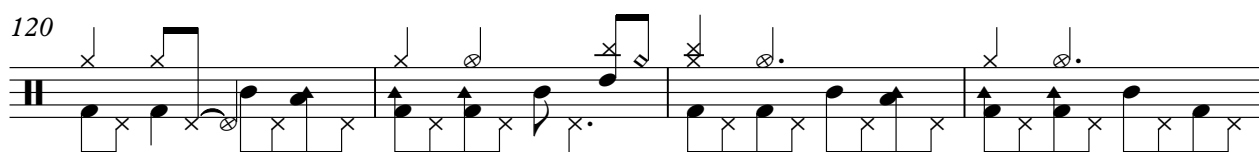
112



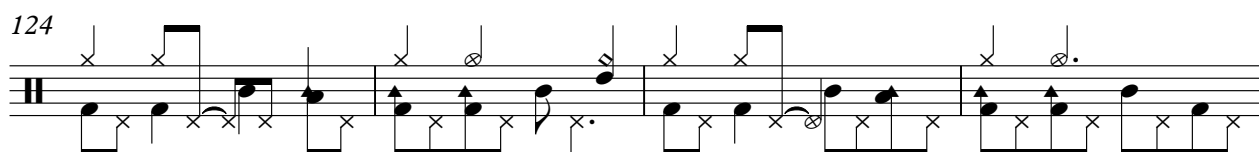
116



120



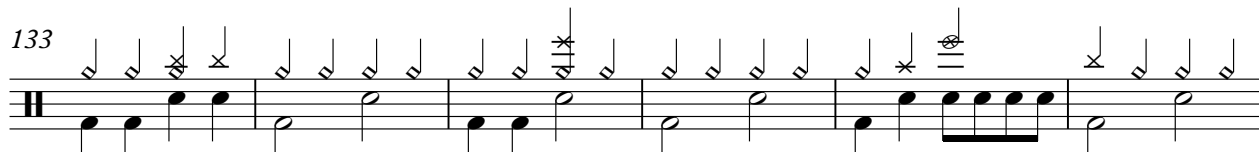
124



128



133



139



V.S.

Standard Drums

145

Musical notation for measure 145, featuring a drum staff with various rhythmic patterns and a guitar staff with notes and rests.

150

Musical notation for measure 150, featuring a drum staff with various rhythmic patterns and a guitar staff with notes and rests.

154

Musical notation for measure 154, featuring a drum staff with various rhythmic patterns and a guitar staff with notes and rests.

159

Musical notation for measure 159, featuring a drum staff with various rhythmic patterns and a guitar staff with notes and rests.

163

Musical notation for measure 163, featuring a drum staff with various rhythmic patterns and a guitar staff with notes and rests.

167

Musical notation for measure 167, featuring a drum staff with various rhythmic patterns and a guitar staff with notes and rests.

171

Musical notation for measure 171, featuring a drum staff with various rhythmic patterns and a guitar staff with notes and rests.

175

Musical notation for measure 175, featuring a drum staff with various rhythmic patterns and a guitar staff with notes and rests.

180

Musical notation for measure 180, featuring a drum staff with various rhythmic patterns and a guitar staff with notes and rests.

185

Musical notation for measure 185, featuring a drum staff with various rhythmic patterns and a guitar staff with notes and rests.

Standard Drums

190

Musical notation for measure 190, featuring a drum staff with a double bar line and a guitar staff with notes and stems. Above the drum staff, there are vertical stems with flags and asterisks indicating specific drum hits.

194

Musical notation for measure 194, featuring a drum staff with a double bar line and a guitar staff with notes and stems. Above the drum staff, there are vertical stems with flags and asterisks indicating specific drum hits.

198

Musical notation for measure 198, featuring a drum staff with a double bar line and a guitar staff with notes and stems. Above the drum staff, there are vertical stems with flags and asterisks indicating specific drum hits.

201

Musical notation for measure 201, featuring a drum staff with a double bar line and a guitar staff with notes and stems. Above the drum staff, there are vertical stems with flags and asterisks indicating specific drum hits.

204

Musical notation for measure 204, featuring a drum staff with a double bar line and a guitar staff with notes and stems. Above the drum staff, there are vertical stems with flags and asterisks indicating specific drum hits.

208

Musical notation for measure 208, featuring a drum staff with a double bar line and a guitar staff with notes and stems. Above the drum staff, there are vertical stems with flags and asterisks indicating specific drum hits.

211

Musical notation for measure 211, featuring a drum staff with a double bar line and a guitar staff with notes and stems. Above the drum staff, there are vertical stems with flags and asterisks indicating specific drum hits.

Muted Guitar

Cranberries - Zobi

♩ = 204,999954

25

28

32

16

50

54

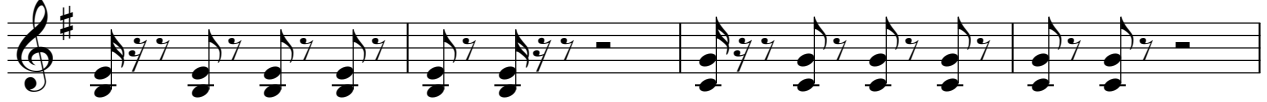
58

62

65

24

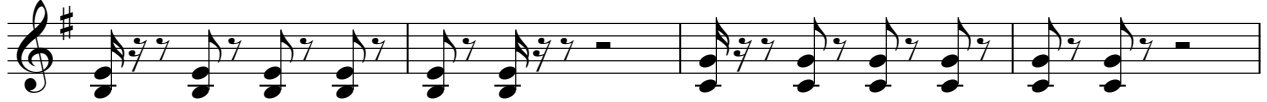
90



94



98



102



106



110



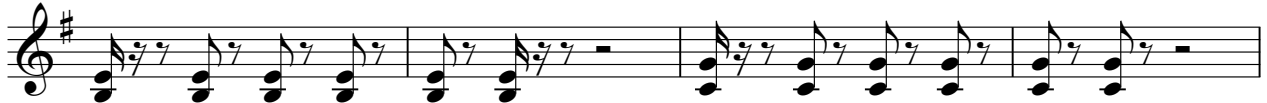
114



118



122



126



129

85

Chorus Guitar

Cranberries - Zobi

♩ = 204,999954

5

9

13

17

22

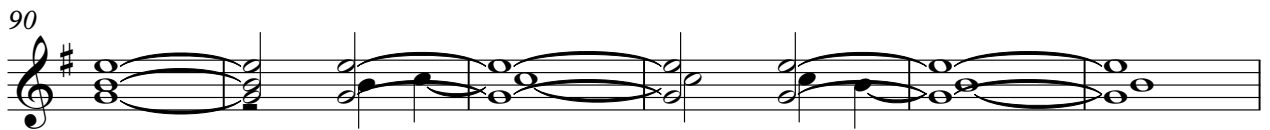
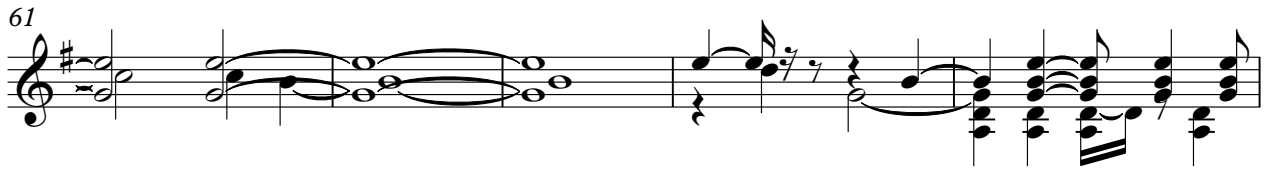
27

34

40

47

V.S.



103

110

117

124

130

134

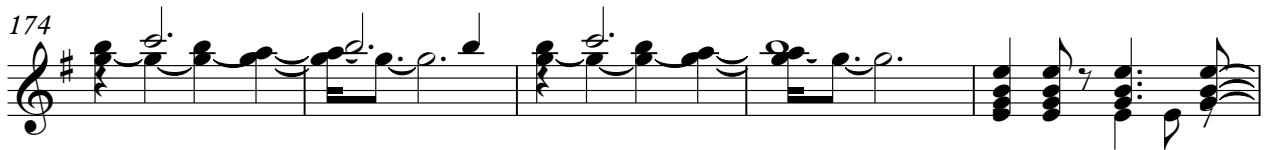
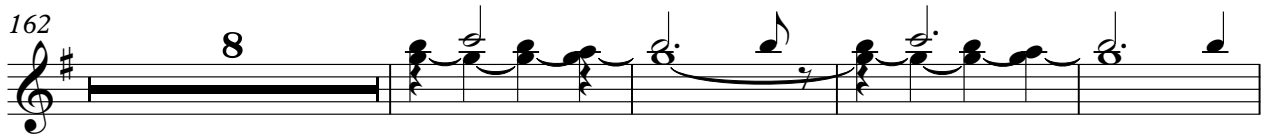
138

142

146

150

V.S.



Chorus Guitar

201

9

The image shows a musical score for guitar. It begins with a treble clef and a key signature of one sharp (F#). The first measure contains a complex chordal structure with multiple notes and stems. This is followed by a series of measures containing sustained notes, indicated by horizontal lines above the notes. The score concludes with a double bar line and the number '9' positioned above it, likely indicating a measure rest or a specific fretting instruction.

Overdrive Guitar

Cranberries - Zobi

♩ = 204,999954

9

12

15

18

21

24

27

37

66

69

72

75

78

81

84

87

91

37

131

134

137

140

143

146

149

152

155

158

161

V.S.

168 **10**

180

183

186

189

192

195

198

201

205 **7**

Overdrive Guitar

Cranberries - Zobi

♩ = 204,999954

29

34

28

66

28

99

60

8

170

176

182

188

194

199

13

Cranberries - Zobi

Fingered Bass

♩ = 204,999954

8



67



73



79



85



91



97



103



109



115



121



127



184



190



196



202



207



211



Cranberries - Zobi

Melody

♩ = 204,999954

33

38

45

51

57

63

69

75

81

86

7

98



105



111



117



123



129



135



141



146



150



61

Background Vocals

Cranberries - Zobi

♩ = 204,999954

68 6

78

3

86

86

92

41 6

141

72

Cranberries - Zobi

Melody

♩ = 204,999954

31

35

42

48

54

60

66

72

78

83

V.S.

Melody

89

5

98

104

111

117

123

129

135

140

145

Melody

150



A musical staff in bass clef with a sharp sign. It contains several notes: a half note on the second line with a fermata above it, a quarter note on the first space, a quarter note on the second space, a half note on the second space with a fermata above it, and a quarter note on the first space. The staff then continues with a thick black line that fills the remaining space, ending at the double bar line. The number '61' is positioned above the staff on the right side.

61