

Creedance Clearwater Revival - Proud Mary 2

♩ = 116,999886

Descant Recorder

Back Vocal

Percussion

DO NOT fight this battle for us. DO NOT fight this battle for us.

Jazz Guitar

Jazz Guitar

Electric Guitar

Electric Guitar

5-string Fretless Electric Bass

♩ = 116,999886

Lead 3 (Calliope)



4

Perc.

J. Gtr.

E. Gtr.

E. Bass

(C) 1994 Tune 1000 Corporation ;Jondora Music
 (C) 1994 Tune 1000 Corporation ;Jondora Music

7

Perc.

J. Gtr.

E. Gtr.

E. Bass

Lead 3

10

Perc.

J. Gtr.

E. Gtr.

E. Bass

Lead 3

13

Perc.

J. Gtr.

E. Gtr.

E. Bass

Lead 3

21

D. Rec.

Perc.

J. Gtr.

J. Gtr.

E. Gtr.

E. Gtr.

E. Bass

Lead 3

in, roll in on the riv er



23

D. Rec.

Perc.

J. Gtr.

J. Gtr.

E. Gtr.

E. Gtr.

E. Bass

Lead 3

Cleaned a lot of plates in Mem

25

Perc.

J. Gtr.

E. Gtr.

E. Bass

Lead 3

28

Perc.

J. Gtr.

E. Gtr.

E. Bass

Lead 3

31

Perc.

J. Gtr.

E. Gtr.

E. Bass

Lead 3

34

D. Rec.

Perc.

J. Gtr. May y keep on burn in, roll in, roll

J. Gtr.

E. Gtr.

E. Gtr.

E. Bass

Lead 3



37

D. Rec.

Perc.

J. Gtr. in, roll in, roll in on the riv er

J. Gtr.

E. Gtr.

E. Gtr.

E. Bass

Lead 3

39

D. Rec.

Perc.

J. Gtr.

J. Gtr.

E. Gtr.

E. Gtr.

E. Bass

Lead 3



42

Perc.

J. Gtr.

E. Gtr.

E. Bass

8

45

Perc.

J. Gtr.

J. Gtr.

E. Gtr.

E. Gtr.

E. Bass

Detailed description: This musical score covers measures 45 and 46. The percussion part features a consistent rhythmic pattern of eighth notes with 'x' marks above them, indicating a specific sound. The electric guitar parts are complex, with multiple staves showing various chord voicings, including triads and dyads, and some triplets. The electric bass part provides a simple, steady accompaniment with quarter notes.



47

Perc.

J. Gtr.

J. Gtr.

E. Gtr.

E. Gtr.

E. Bass

Detailed description: This musical score covers measures 47 and 48. The percussion part continues with the same eighth-note pattern. The electric guitar parts are highly intricate, featuring many chords and some triplets. The electric bass part continues with a steady quarter-note accompaniment.

50

Perc.

J. Gtr.

J. Gtr.

E. Gtr.

E. Gtr.

E. Bass



53

Perc.

J. Gtr.

J. Gtr.

E. Gtr.

E. Gtr.

E. Bass

56

D. Rec.

Perc.

J. Gtr.

J. Gtr.

E. Gtr.

E. Gtr.

E. Bass

Lead 3



59

D. Rec.

Perc.

J. Gtr.

J. Gtr.

E. Gtr.

E. Gtr.

E. Bass

Lead 3

61

D. Rec.
Perc.
J. Gtr.
J. Gtr.
E. Gtr.
E. Gtr.
E. Bass
Lead 3

This musical score covers measures 61 to 63. It features seven staves: D. Rec., Perc., J. Gtr., J. Gtr., E. Gtr., E. Gtr., and E. Bass. The key signature is one sharp (F#) and the time signature is 4/4. The D. Rec. part has a rest in measure 61 and a quarter note in measure 62. The Perc. part has a complex rhythmic pattern with 'x' marks above the notes. The J. Gtr. parts feature a mix of chords and melodic lines. The E. Gtr. parts have a similar mix of chords and melodic lines. The E. Bass part has a steady eighth-note bass line. The Lead 3 part has a single quarter note in measure 61 and rests in measures 62 and 63.



64

Perc.
J. Gtr.
E. Gtr.
E. Bass

This musical score covers measures 64 to 66. It features four staves: Perc., J. Gtr., E. Gtr., and E. Bass. The key signature is one sharp (F#) and the time signature is 4/4. The Perc. part continues with its complex rhythmic pattern. The J. Gtr. part has a mix of chords and melodic lines. The E. Gtr. part has a similar mix of chords and melodic lines. The E. Bass part has a steady eighth-note bass line.

67

Perc.

J. Gtr.

E. Gtr.

E. Bass

Lead 3

70

Perc.

J. Gtr.

E. Gtr.

E. Bass

Lead 3

73

Perc.

J. Gtr.

E. Gtr.

E. Bass

Lead 3

76

Perc.

J. Gtr.

E. Gtr.

E. Bass

Lead 3



79

D. Rec.

Perc.

J. Gtr.

J. Gtr.

E. Gtr.

E. Gtr.

E. Bass

Lead 3

82

D. Rec.

Perc.

J. Gtr.

J. Gtr.

E. Gtr.

E. Gtr.

E. Bass

Lead 3

in' on the riv er, roll'



84

D. Rec.

Perc.

J. Gtr.

E. Gtr.

E. Bass

Lead 3

in', roll in', roll in', roll'

86

D. Rec.

Perc.

J. Gtr.

J. Gtr.

E. Gtr.

E. Gtr.

E. Bass

Lead 3

in on the river roll

88

D. Rec.

Perc.

J. Gtr.

J. Gtr.

E. Gtr.

E. Gtr.

E. Bass

Lead 3

roll in on the river er

91

D. Rec.

Perc.

J. Gtr.

J. Gtr.

E. Gtr.

E. Gtr.

E. Bass

Lead 3



93

D. Rec.

Perc.

J. Gtr.

J. Gtr.

E. Gtr.

E. Gtr.

E. Bass

Lead 3

95

D. Rec.

Perc.

J. Gtr.

J. Gtr.

E. Gtr.

E. Gtr.

E. Bass

Lead 3

Wedance Clearwater Revival - Proud Mary 2

Descant Recorder

♩ = 116,999886

18

22

11

37

17

57

61

17

81

85

89

93

(C) 1994 Tune 1000 Corporation London Music
(C) 1994 Tune 1000 Corporation London Music

Leadance Clearwater Revival - Proud Mary 2

Percussion

♩ = 116,999886

Back Vocal

Drumset: 1 = Snare, 2 = Bass Drum, 3 = Cymbal, 4 = Tom

Left a good job in the city: work in' for them an ev 'ry night

and day. And I never lost one minute of sleep in', wor

ry in both the way things might have been. Big wheel a-keep on turn

in', Proud Mary keep on burn in', roll

in', roll in', roll in' on the river.

Cleaned a lot of plates in Memphis, pumped

a lot of pain down New Orleans; but I never saw the good side of the city till

hitched ride on a train, I saw the queen. Big wheel a-keep on turn

V.S.

(C) 1994 Tune 1000 Corporation; Jondora Music
(C) 1994 Tune 1000 Corporation; Jondora Music

Percussion

33 in', Proud Mar y keep on burn in', roll

36 in', roll in', roll in', roll in' on the riv er.

39

43

46

50

54

57 Roll in', roll in', roll

60 in' on the riv er.

64

If

68

you down to the river, er, bet you gonna find some people here. You

72

don't have to worry 'cause you have no money: people on the river are hap

75

py to give. Big wheel a-keep on turn in', Proud

78

Mary keep on burn in', roll in', roll

81

in', roll in' on the river, roll

84

in', roll in', roll in', roll in' on the river,

87

roll in', roll in', roll

90

in' on the river, roll in', roll

93

in', roll in' on the river.

Wedance Clearwater Revival - Proud Mary 2

Jazz Guitar

♩ = 116,999886

5

8

11

14

17

20

23

26

29

(C) 1994 Tune 1000 Corporation ;Jondora Music
(C) 1994 Tune 1000 Corporation ;Jondora Music

V.S.

This image displays a page of jazz guitar sheet music, numbered 2, with the title "Jazz Guitar". The music is written in treble clef with a key signature of one sharp (F#) and a common time signature (C). The page contains ten staves of music, each starting with a measure number: 32, 35, 38, 41, 44, 47, 50, 53, 56, and 59. The notation is dense, featuring a variety of rhythmic patterns and chord voicings. Many notes are beamed together, and there are frequent use of slurs and ties. The music is characterized by a complex, syncopated feel typical of jazz guitar. The page ends with a double bar line at the end of the final staff.

62

65

68

71

74

77

80

83

86

89

V.S.

92

Musical notation for measures 92 and 93. Measure 92 contains a dotted quarter note chord, followed by eighth notes, and a quarter note chord. Measure 93 contains a dotted quarter note chord, followed by eighth notes, and a quarter note chord. The key signature has one sharp (F#).

94

Musical notation for measures 94 and 95. Measure 94 contains a dotted quarter note chord, followed by eighth notes, and a quarter note chord. Measure 95 contains a dotted quarter note chord, followed by eighth notes, and a quarter note chord. The key signature has one sharp (F#).

Swing Dance Clearwater Revival - Proud Mary 2

Jazz Guitar

♩ = 116,999886

18 2

23 11 2

38 6

47

50

53

57 2

62 17 2

83 2 2

90

(C) 1994 Tune 1000 Corporation ;Jondora Music
(C) 1994 Tune 1000 Corporation ;Jondora Music

Wedance Clearwater Revival - Proud Mary 2

Electric Guitar

♩ = 116,999886

5

8

11

14

17

20

23

26

29

(C) 1994 Tune 1000 Corporation ;Jondora Music
(C) 1994 Tune 1000 Corporation ;Jondora Music

V.S.

32

35

38

41

44

47

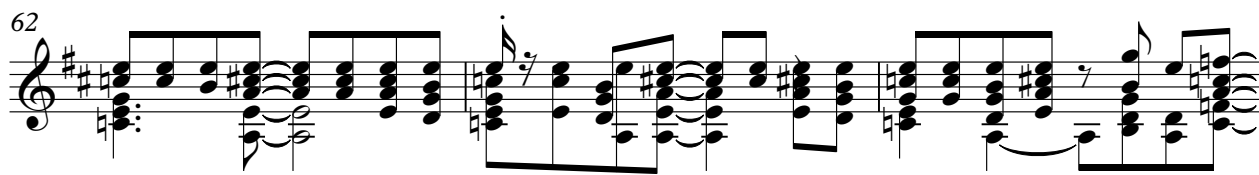
50

53

56

59

62



Musical notation for measure 62, featuring a treble clef, a key signature of one sharp (F#), and a 4/4 time signature. The notation includes a complex chord structure with multiple notes per measure, including some beamed eighth notes and sixteenth notes.

65



Musical notation for measure 65, continuing the complex chordal and melodic patterns from the previous measures.

68



Musical notation for measure 68, showing a continuation of the rhythmic and harmonic motifs.

71



Musical notation for measure 71, featuring similar chordal textures and melodic lines.

74



Musical notation for measure 74, maintaining the intricate guitar part.

77



Musical notation for measure 77, showing a variation in the chordal structure.

80



Musical notation for measure 80, continuing the complex guitar part.

83



Musical notation for measure 83, featuring a mix of chords and melodic fragments.

86



Musical notation for measure 86, showing a continuation of the rhythmic patterns.

89



Musical notation for measure 89, concluding the sequence on this page.

92

Musical notation for measures 92 and 93. Measure 92 contains a series of chords: a D major chord (D4, F#4, A4), a D major chord (D4, F#4, A4), a D major chord (D4, F#4, A4), a D major chord (D4, F#4, A4), a D major chord (D4, F#4, A4), and a D major chord (D4, F#4, A4). Measure 93 contains a series of chords: a D major chord (D4, F#4, A4), a D major chord (D4, F#4, A4), a D major chord (D4, F#4, A4), a D major chord (D4, F#4, A4), a D major chord (D4, F#4, A4), and a D major chord (D4, F#4, A4). The notation includes stems, beams, and slurs connecting the notes across measures.

94

Musical notation for measures 94 and 95. Measure 94 contains a series of chords: a D major chord (D4, F#4, A4), a D major chord (D4, F#4, A4), a D major chord (D4, F#4, A4), a D major chord (D4, F#4, A4), a D major chord (D4, F#4, A4), and a D major chord (D4, F#4, A4). Measure 95 contains a series of chords: a D major chord (D4, F#4, A4), a D major chord (D4, F#4, A4), a D major chord (D4, F#4, A4), a D major chord (D4, F#4, A4), a D major chord (D4, F#4, A4), and a D major chord (D4, F#4, A4). The notation includes stems, beams, and slurs connecting the notes across measures.

Wedance Clearwater Revival - Proud Mary 2

Electric Guitar

♩ = 116,999886

18 2

23 11 2

38 6 3

47 3 3 3

50

53

57 2

62 17 2

83 2 2

90

Detailed description: The image shows a musical score for electric guitar in 4/4 time, key of D major. It consists of ten staves of music. The first staff starts with a tempo marking of 116,999886. The score includes various rhythmic patterns, including eighth and sixteenth notes, and rests. There are several triplet markings (indicated by a '3' in a bracket) and double bar lines. The staves are numbered 18, 23, 38, 47, 50, 53, 57, 62, 83, and 90. The music is written in a standard musical notation style with a treble clef and a key signature of two sharps (F# and C#).

(C) 1994 Tune 1000 Corporation ;Jondora Music
(C) 1994 Tune 1000 Corporation ;Jondora Music

94



Swanee Dance Clearwater Revival - Proud Mary 2
5-string Fretless Electric Bass

♩ = 116,999886



5



10



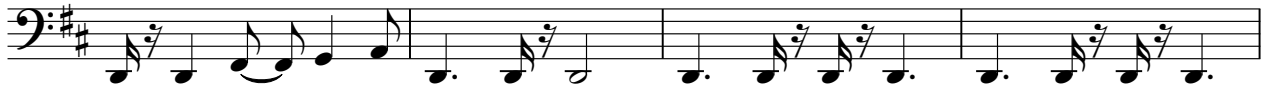
14



19



23



27



31



36



40



(C) 1994 Tune 1000 Corporation ;Jondora Music
(C) 1994 Tune 1000 Corporation ;Jondora Music

V.S.

44



49



53



57



61



65



70



74



78



82



86



90



93



Medance Clearwater Revival - Proud Mary 2

Lead 3 (Calliope)

♩ = 116,999886

7

11

15

19

24

28

32

37

17

57

60

6

(C) 1994 Tune 1000 Corporation ;Jondora Music
(C) 1994 Tune 1000 Corporation ;Jondora Music

Lead 3 (Calliope)

68



72



76



81



85



90



93

