

d note - shed my skin john steenbergen

♩ = 134,000061

BASSLINE

PADS

INTRO

Detailed description: This system contains the first three staves of music. The Bassline staff (bass clef, 4/4 time) shows a rhythmic pattern of eighth notes with accents. The Pads staff (bass clef, 4/4 time) features a long, sustained chord with a slur over it. The Intro staff (treble clef, 4/4 time) shows a melodic line with eighth notes and rests.

3

BASSLINE

PADS

INTRO

Detailed description: This system contains the next three staves. The Bassline staff continues the rhythmic pattern from the first system. The Pads staff shows a change in the sustained chord. The Intro staff continues the melodic line.

5

BASSLINE

PADS

INTRO

Detailed description: This system contains the final three staves. The Bassline staff continues the rhythmic pattern. The Pads staff shows a further change in the sustained chord. The Intro staff continues the melodic line.

BASSLINE

Musical notation for the bassline, consisting of three measures. The first two measures contain a rhythmic pattern of eighth notes with stems pointing down, and the third measure contains a whole rest. The notation is in bass clef.

PADS

Musical notation for the pads, consisting of three measures. The first two measures show a sustained chord with a slur over the notes, and the third measure contains a whole rest. The notation is in bass clef.

INTRO

Musical notation for the intro, consisting of three measures. The first two measures contain a rhythmic pattern of eighth notes with stems pointing down, and the third measure contains a whole rest. The notation is in treble clef.

d note - shed my skin john steenbergen
BASSLINE

♩ = 134,000061



4

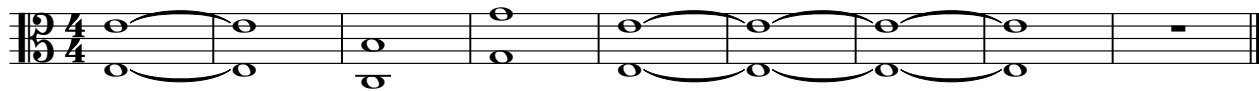


7



d note - shed my skin john steenbergen
PADS

♩ = 134,000061



d note - shed my skin john steenbergen
INTRO

♩ = 134,000061

