

Da `Nabucco` Di Giuseppe Verdi - Va Pensiero

♩ = 54,000004

The image displays a musical score for the piece "Va Pensiero" from Giuseppe Verdi's opera "Nabucco". The score is arranged in three systems, each containing three staves: Canto (Bass clef), Right Hand (Treble clef), and Left Hand (Treble clef). The time signature is 4/4. The tempo is indicated as ♩ = 54,000004. The key signature is one flat (B-flat major). The score includes various musical notations such as notes, rests, accidentals, and articulation marks. The first system starts with a fermata over the first measure. The second system features a triplet of eighth notes in the left hand. The third system continues the triplet and includes a fermata over the final measure.

5

Canto

Right Hand

Left Hand

Measure 5: Canto (Bass clef) has notes G#4, A4, Bb4, and A#4. Right Hand (Treble clef) has notes G#4, A4, Bb4, and A#4. Left Hand (Treble clef) has a triplet of eighth notes: G#4, A4, Bb4, followed by a series of chords and eighth notes.

6

Canto

Right Hand

Left Hand

Measure 6: Canto (Bass clef) has notes G#4, A4, Bb4, and A#4. Right Hand (Treble clef) has notes G#4, A4, Bb4, and A#4. Left Hand (Treble clef) has a triplet of eighth notes: G#4, A4, Bb4, followed by a series of chords and eighth notes.

7

Canto

Right Hand

Left Hand

Measure 7: Canto (Bass clef) has notes G#4, A4, Bb4, and A#4. Right Hand (Treble clef) has notes G#4, A4, Bb4, and A#4. Left Hand (Treble clef) has a triplet of eighth notes: G#4, A4, Bb4, followed by a series of chords and eighth notes.

8

Canto

Right Hand

Left Hand

Measure 8: Canto (Bass clef) has notes G#4, A4, Bb4, and A#4. Right Hand (Treble clef) has notes G#4, A4, Bb4, and A#4. Left Hand (Treble clef) has a triplet of eighth notes: G#4, A4, Bb4, followed by a series of chords and eighth notes.

9

Canto

Right Hand

Left Hand

10

Canto

Right Hand

Left Hand

11

Canto

Right Hand

Left Hand

12

Canto

Right Hand

Left Hand

17

Canto

Right Hand

Left Hand

18

Canto

Right Hand

Left Hand

19

Canto

Right Hand

Left Hand

20

Canto

Right Hand

Left Hand

The image displays a musical score for four measures, numbered 17 through 20. Each measure is represented by three staves: Canto (bass clef), Right Hand (treble clef), and Left Hand (treble clef). Measure 17 shows a Canto staff with a whole note G#4, a Right Hand staff with a whole note G#4, and a Left Hand staff with a triplet of eighth notes (F#3, G#3, A3) followed by a series of eighth notes. Measure 18 features a Canto staff with a whole note G#4, a Right Hand staff with a whole note chord (G#4, A4, B4), and a Left Hand staff with a triplet of eighth notes (F#3, G#3, A3) followed by eighth notes. Measure 19 has a Canto staff with a whole note G#4, a Right Hand staff with a whole note chord (G#4, A4, B4) and a triplet of eighth notes (F#3, G#3, A3), and a Left Hand staff with a triplet of eighth notes (F#3, G#3, A3) followed by eighth notes. Measure 20 shows a Canto staff with a whole note G#4, a Right Hand staff with a whole note chord (G#4, A4, B4), and a Left Hand staff with a triplet of eighth notes (F#3, G#3, A3) followed by eighth notes.

21

Canto

Right Hand

Left Hand

6

22

Canto

Right Hand

Left Hand

3

3

23

Canto

Right Hand

Left Hand

3

3

24

Canto

Right Hand

Left Hand

3

Detailed description of the musical score: The score is divided into four systems, each corresponding to a measure number (21, 22, 23, 24). Each system contains three staves: Canto (bass clef), Right Hand (treble clef), and Left Hand (treble clef). Measure 21: Canto has a half note with a flat, followed by a quarter note with a sharp, a quarter rest, and a dotted quarter note. Right Hand has a half note with a sharp, a quarter note with a flat, a quarter rest, and a dotted quarter note. Left Hand features a sixteenth-note triplet (marked '6') over a series of sixteenth notes. Measure 22: Canto has a half note, a quarter note, a quarter note, and a dotted quarter note with a flat and sharp. Right Hand has a half note, a quarter note, a quarter note, and a dotted quarter note with a flat and sharp. Left Hand has a half note, a quarter note, a quarter note, and a dotted quarter note with a flat and sharp. Measure 23: Canto has a half note with a flat, a quarter note with a sharp, a quarter note with a sharp, and a dotted quarter note. Right Hand has a half note, a quarter note, a quarter note, and a dotted quarter note. Left Hand has a half note, a quarter note, a quarter note, and a dotted quarter note. Measure 24: Canto has a quarter note with a sharp, a quarter rest, a dotted quarter note, a quarter note, a quarter rest, and a dotted quarter note with a flat and sharp. Right Hand has a half note, a quarter note, a quarter note, and a dotted quarter note with a flat and sharp. Left Hand has a half note, a quarter note, a quarter note, and a dotted quarter note with a flat and sharp.

29

Canto

Right Hand

Left Hand

30

Canto

Right Hand

Left Hand

31

Canto

Right Hand

Left Hand

32

Canto

Right Hand

Left Hand

33

Canto

Right Hand

Left Hand

34

Canto

Right Hand

Left Hand

35

Canto

Right Hand

Left Hand

36

Canto

Right Hand

Left Hand

37

Canto

Right Hand

Left Hand

This musical score for measure 37 consists of three staves. The top staff, labeled 'Canto', is in a bass clef with a key signature of one sharp (F#) and a 2/4 time signature. It contains a melodic line starting with a quarter rest, followed by a dotted quarter note, a quarter note, and another dotted quarter note. The middle staff, labeled 'Right Hand', is in a treble clef and features a complex rhythmic pattern with sixteenth notes and eighth notes, including a sextuplet of sixteenth notes and several triplets. The bottom staff, labeled 'Left Hand', is in a treble clef and contains a bass line with eighth notes and quarter notes, also featuring triplets.

38

Canto

Right Hand

Left Hand

This musical score for measure 38 consists of three staves. The top staff, labeled 'Canto', is in a bass clef with a key signature of one sharp (F#) and a 2/4 time signature. It begins with a half note followed by a quarter rest, then a quarter note, and ends with a quarter rest. A long slur covers the first two measures. The middle staff, labeled 'Right Hand', is in a treble clef and features a complex rhythmic pattern with sixteenth notes and eighth notes, including triplets. The bottom staff, labeled 'Left Hand', is in a treble clef and contains a bass line with eighth notes and quarter notes, also featuring triplets.

Da `Nabucco` Di Giuseppe Verdi - Va Pensiero

Canto

♩ = 54,000004

5

8

12

16

19

23

27

31

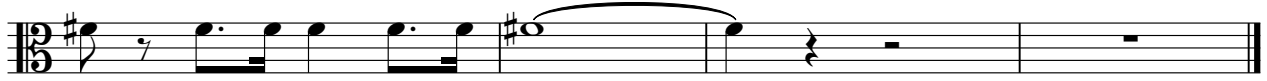
34

V.S.

2

Canto

37



Da `Nabucco` Di Giuseppe Verdi - Va Pensiero

Right Hand

♩ = 54,000004

5

8

12

16

20

24

27

29

30

V.S.

2

Right Hand

31

6 3 3

32

6 6 6 6

33

3 3 3

34

3 3 3

35

6 3 3

36

6 3 6

37

6 3 3

38

3 3

Da `Nabucco` Di Giuseppe Verdi - Va Pensiero

Left Hand

♩ = 54,000004

2

3

4

5

6

7

8

9

10

V.S.

Musical score for the left hand, measures 11 through 20. The score is written on ten staves, each with a treble clef and a key signature of one sharp (F#). The music consists of eighth and sixteenth notes, often beamed together. Measure 11 features a triplet of eighth notes. Measure 12 contains a sextuplet of eighth notes. Measures 13 through 15 show a triplet of eighth notes. Measure 16 has a triplet of eighth notes. Measure 17 features a triplet of eighth notes. Measure 18 has a triplet of eighth notes. Measure 19 has a triplet of eighth notes. Measure 20 features a triplet of eighth notes. The notation includes various accidentals (sharps and flats) and rests.

Musical score for the left hand, measures 21-33. The score is written on ten staves. Measure 21 features a sixteenth-note triplet (6) and a sixteenth-note pair (6). Measure 22 has a sixteenth-note triplet (3). Measure 23 has a sixteenth-note pair (7). Measure 24 has a sixteenth-note triplet (3) and a sixteenth-note pair (3). Measure 25 has a sixteenth-note pair (6) and a sixteenth-note pair (6). Measure 27 has a sixteenth-note pair (3). Measure 30 has a sixteenth-note triplet (3). Measure 31 has a sixteenth-note triplet (3) and a sixteenth-note pair (3). Measure 32 has a sixteenth-note pair (3). Measure 33 has a sixteenth-note triplet (3) and a sixteenth-note pair (3). The score includes various musical notations such as slurs, ties, and dynamic markings.

V.S.

34

Musical notation for measure 34, featuring a treble clef, a key signature of one sharp (F#), and a 3/4 time signature. The melody consists of eighth notes with a triplet of three eighth notes in the first measure. The bass line consists of quarter notes and eighth notes with various accidentals.

35

Musical notation for measure 35, featuring a treble clef, a key signature of one sharp (F#), and a 3/4 time signature. The melody consists of eighth notes with a triplet of three eighth notes in the first measure. The bass line consists of quarter notes and eighth notes with various accidentals.

36

Musical notation for measure 36, featuring a treble clef, a key signature of one sharp (F#), and a 3/4 time signature. The melody consists of eighth notes with a triplet of three eighth notes in the first measure. The bass line consists of quarter notes and eighth notes with various accidentals.

37

Musical notation for measure 37, featuring a treble clef, a key signature of one sharp (F#), and a 3/4 time signature. The melody consists of eighth notes with four triplet markings over groups of three eighth notes. The bass line consists of quarter notes and eighth notes with various accidentals.

38

Musical notation for measure 38, featuring a treble clef, a key signature of one sharp (F#), and a 3/4 time signature. The melody consists of quarter notes with two triplet markings over groups of three quarter notes. The bass line consists of quarter notes with various accidentals.