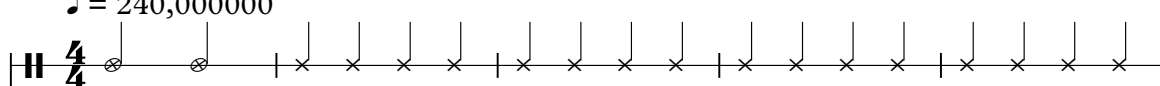
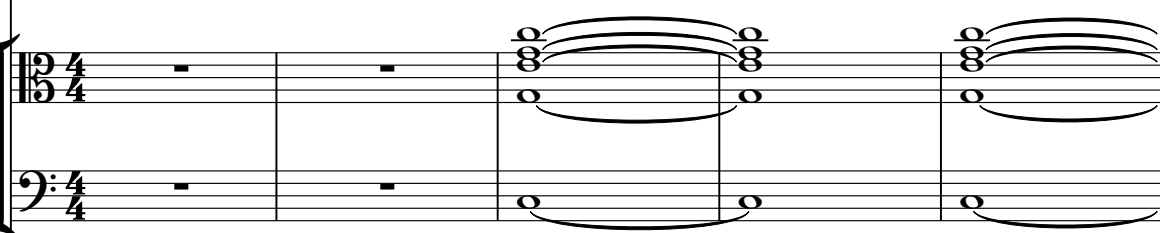
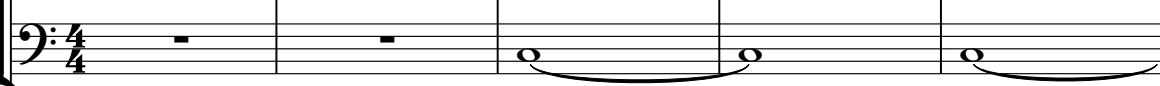



Dal Film Disney `Aladdin` - Scale E Arpeggi

♩ = 240,000000

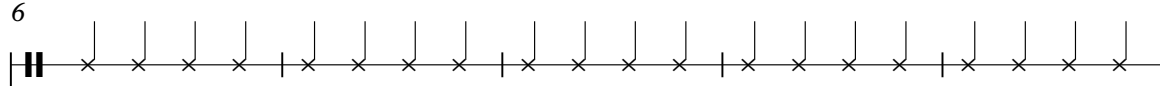
Drums 

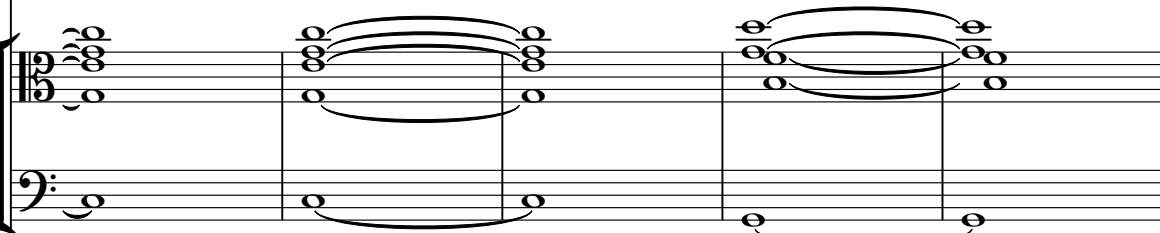
Piano 

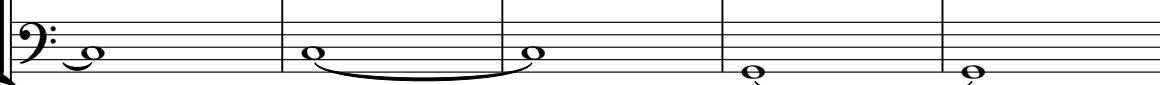
Guitar 


Melody 

6

Drums 

Piano 

Guitar 

Melody 

11

Drums

Piano

Guitar

Melody

This system covers measures 11 to 15. The drums play a steady eighth-note pattern. The piano part features chords with slurs, primarily in the lower register. The guitar part provides a bass line with slurs. The melody is a simple eighth-note line.

16

Drums

Piano

Guitar

Melody

This system covers measures 16 to 20. The drums continue with the eighth-note pattern. The piano part has chords with slurs, including a sharp sign in the second measure. The guitar part has a bass line with slurs. The melody continues with eighth notes.

21

Drums

Piano

Guitar

Melody

This system covers measures 21 to 25. The drums maintain the eighth-note pattern. The piano part has chords with slurs. The guitar part has a bass line with slurs. The melody starts with eighth notes, has a rest in the second measure, and then continues with eighth notes.

26

Drums

Piano

Guitar

Melody

Detailed description: This system covers measures 26 to 30. The Drums part features a consistent rhythmic pattern of eighth notes. The Piano part has a complex texture with multiple chords and a large slur over the first two measures. The Guitar part plays a simple bass line with a slur over the first two measures. The Melody part is written in a treble clef and consists of a sequence of eighth and quarter notes.

31

Drums

Piano

Guitar

Melody

Detailed description: This system covers measures 31 to 35. The Drums part continues with the same eighth-note pattern. The Piano part features a large slur over the first two measures, followed by a change in chord structure. The Guitar part has a simple bass line with a slur over the first two measures. The Melody part continues with eighth and quarter notes.

36

Drums

Piano

Guitar

Melody

Detailed description: This system covers measures 36 to 40. The Drums part maintains the eighth-note pattern. The Piano part has a series of chords with a slur over the first two measures. The Guitar part plays a simple bass line with a slur over the first two measures. The Melody part continues with eighth and quarter notes.

41

Drums: A drum staff with a double bar line at the start and a series of 'x' marks indicating hits on a grid.

Piano: A grand staff with a bass clef. It features chords of two eighth notes in the right hand and one eighth note in the left hand, with a fermata over the final measure.

Guitar: A bass clef staff with a single eighth note in the left hand.

Melody: A treble clef staff with a sequence of eighth notes, a quarter rest, and a series of eighth notes.

45

Drums: A drum staff with a double bar line at the start and a series of 'x' marks indicating hits on a grid.

Piano: A grand staff with a bass clef. It features chords of two eighth notes in the right hand and one eighth note in the left hand, with a fermata over the final measure.

Guitar: A bass clef staff with a sequence of eighth notes.

Melody: A treble clef staff with a sequence of eighth notes.

49

Drums: A drum staff with a double bar line at the start and a series of 'x' marks indicating hits on a grid.

Piano: A grand staff with a bass clef. It features chords of two eighth notes in the right hand and one eighth note in the left hand, with a fermata over the final measure.

Guitar: A bass clef staff with a sequence of eighth notes.

Melody: A treble clef staff with a sequence of eighth notes.

54

Drums

Piano

Guitar

Melody

Detailed description: This system covers measures 54 to 58. The Drums part features a consistent rhythmic pattern of eighth notes. The Piano part consists of chords in the left hand, with the first two measures having a key signature of one flat (Bb) and the last two measures having a key signature of two flats (Bb, Eb). The Guitar part plays a bass line with a key signature of two flats (Bb, Eb). The Melody part is written in treble clef with a key signature of two flats (Bb, Eb).

59

Drums

Piano

Guitar

Melody

Detailed description: This system covers measures 59 to 63. The Drums part continues with the same eighth-note pattern. The Piano part has chords in the left hand, with the first two measures in one flat (Bb) and the last measure in two flats (Bb, Eb). The Guitar part continues with the bass line in two flats (Bb, Eb). The Melody part continues in treble clef with two flats (Bb, Eb).

64

Drums

Piano

Guitar

Melody

Detailed description: This system covers measures 64 to 68. The Drums part continues with the eighth-note pattern. The Piano part has chords in the left hand, with the first measure in one flat (Bb) and the following three measures in two flats (Bb, Eb). The Guitar part continues with the bass line in two flats (Bb, Eb). The Melody part continues in treble clef with two flats (Bb, Eb).

69

Drums

Piano

Guitar

Melody

This musical score covers measures 69 to 72. The Drums part features a consistent rhythmic pattern of eighth notes. The Piano part consists of two chords, each held for two measures. The Guitar part plays a single bass note, also held for two measures. The Melody part begins with a half note followed by a series of eighth notes.

73

Drums

Piano

Guitar

Melody

This musical score covers measures 73 to 76. The Drums part continues with the same eighth-note pattern. The Piano part has two chords, with the second chord being held for two measures. The Guitar part plays a single bass note, held for two measures. The Melody part is mostly silent, with a few notes at the beginning of the section.

Drums

Dal Film Disney `Aladdin` - Scale E Arpeggi

♩ = 240,000000

7

13

19

25

31

37

43

49

55

V.S.

Piano

Dal Film Disney `Aladdin` - Scale E Arpeggi

♩ = 240,000000

2

11

20

29

38

46

55

64

71

Guitar

Dal Film Disney `Aladdin` - Scale E Arpeggi

♩ = 240,000000

2



11



20



29



38



47



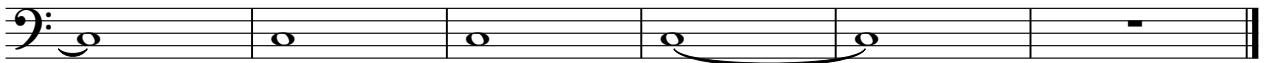
56



65



72



Dal Film Disney `Aladdin` - Scale E Arpeggi

Melody

♩ = 240,000000

2

8

14

20

26

32

38

44

49

55

V.S.

2

Melody

61



67



71

