

Dan Fogelberg - Same Old Lang Syne

♩ = 106,000137

Staff-1

Staff-4

Staff-2

Staff-3

4

Staff-1

Staff-4

Staff-2

Staff-3

Copyright © 1997 by Me!
All Rights Reserved

Staff-1

Staff-4

Staff-5

Staff-2

Staff-3

Staff-1

Staff-4

Staff-5

Staff-2

Staff-3

13

Staff-1

Staff-4

Staff-5

Staff-2

Staff-3

16

Staff-1

Staff-4

Staff-5

Staff-2

Staff-3

Staff-1

Staff-4

Staff-5

Staff-2

Staff-3

Staff-1

Staff-4

Staff-5

Staff-2

Staff-3

25

Staff-1

Staff-4

Staff-2

Staff-3

28

Staff-1

Staff-4

Staff-2

Staff-3

31

Staff-1

Staff-4

Staff-5

Staff-2

Staff-3

34

Staff-1

Staff-4

Staff-5

Staff-2

Staff-3

37

Staff-1

Staff-4

Staff-5

Staff-2

Staff-3

40

Staff-1: Treble clef, guitar tablature with fret numbers and accidentals. Includes a double bar line with a repeat sign and a fermata over a measure.

Staff-6: Bass clef, bass line with eighth and sixteenth notes.

Staff-4: Treble clef, piano accompaniment with chords and long notes.

Staff-5: Treble clef, piano accompaniment with eighth and sixteenth notes.

Staff-2: Treble clef, vocal line with notes and rests.

Staff-3: Treble clef, piano accompaniment with chords and notes.

43

Staff-1: Treble clef, guitar tablature with fret numbers and accidentals. Includes a double bar line with a repeat sign and a fermata over a measure.

Staff-6: Bass clef, bass line with eighth and sixteenth notes.

Staff-4: Treble clef, piano accompaniment with chords and long notes.

Staff-5: Treble clef, piano accompaniment with eighth and sixteenth notes.

Staff-2: Treble clef, vocal line with notes and rests.

Staff-3: Treble clef, piano accompaniment with chords and notes.

46

Staff-1: Treble clef, guitar tablature with 'x' marks for muted notes and rhythmic notation.
Staff-6: Bass clef, melodic line with a sharp sign.
Staff-4: Treble clef, chordal accompaniment with large oval markings.
Staff-5: Treble clef, rhythmic accompaniment.
Staff-2: Treble clef, melodic line.
Staff-3: Treble clef, melodic line with a triplet of eighth notes.

49

Staff-1: Treble clef, guitar tablature with 'x' marks and rhythmic notation.
Staff-6: Bass clef, melodic line.
Staff-4: Treble clef, chordal accompaniment with large oval markings.
Staff-5: Treble clef, rhythmic accompaniment.
Staff-2: Treble clef, melodic line with a complex rhythmic pattern.
Staff-3: Treble clef, melodic line with a complex rhythmic pattern.

52

Staff-1

Staff-6

Staff-4

Staff-5

Staff-2

Staff-3

55

Staff-1

Staff-6

Staff-4

Staff-5

Staff-2

Staff-3

58

Staff-1

Staff-6

Staff-4

Staff-5

Staff-2

Staff-3

61

Staff-1

Staff-6

Staff-4

Staff-5

Staff-2

Staff-3

64

Staff-1: Treble clef, 7/8 time signature, contains rhythmic notation with accents and slurs.

Staff-6: Bass clef, contains a melodic line with slurs.

Staff-4: Treble clef, contains block chords with slurs.

Staff-5: Treble clef, contains a melodic line with slurs.

Staff-2: Treble clef, contains a melodic line with slurs.

Staff-3: Treble clef, contains a bass line with slurs and a triplet of eighth notes.

67

Staff-1: Treble clef, 7/8 time signature, contains rhythmic notation with accents and slurs.

Staff-6: Bass clef, contains a melodic line with slurs.

Staff-4: Treble clef, contains block chords with slurs.

Staff-5: Treble clef, contains a melodic line with slurs.

Staff-2: Treble clef, contains a melodic line with slurs.

Staff-3: Treble clef, contains a bass line with slurs and a triplet of eighth notes.

70

Staff-1: Treble clef, 7/8 time signature, contains rhythmic notation with accents and slurs.

Staff-6: Bass clef, contains a melodic line with slurs.

Staff-4: Treble clef, contains complex chordal structures with large oval markings.

Staff-5: Treble clef, contains a melodic line with slurs.

Staff-2: Treble clef, contains a melodic line with slurs.

Staff-3: Treble clef, contains a melodic line with a triplet of eighth notes and slurs.

73

Staff-1: Treble clef, 7/8 time signature, contains rhythmic notation with accents and slurs.

Staff-6: Bass clef, contains a melodic line with slurs.

Staff-4: Treble clef, contains complex chordal structures with large oval markings.

Staff-5: Treble clef, contains a melodic line with slurs.

Staff-2: Treble clef, contains a melodic line with slurs.

Staff-3: Treble clef, contains a melodic line with slurs.

76

Staff-1: Treble clef, 7/8 time signature. Contains rhythmic notation with accents and slurs.

Staff-6: Bass clef. Contains a melodic line with a long slur.

Staff-4: Treble clef. Contains a melodic line with a triplet of eighth notes and a slur.

Staff-5: Treble clef. Contains a complex rhythmic accompaniment with many beamed notes.

Staff-2: Treble clef. Contains a melodic line with a triplet of eighth notes and a slur.

Staff-3: Treble clef. Contains a complex rhythmic accompaniment with many beamed notes.

79

Staff-1: Treble clef, 7/8 time signature. Contains a melodic line with a slur and a circled note.

Staff-6: Bass clef. Contains a melodic line with a slur.

Staff-4: Treble clef. Contains a melodic line with a slur and a circled note.

Staff-5: Treble clef. Contains a complex rhythmic accompaniment with many beamed notes.

Staff-2: Treble clef. Contains a melodic line with a slur.

Staff-3: Treble clef. Contains a complex rhythmic accompaniment with many beamed notes.

Tempo marking: ♩ = 102,000053

83

Staff-1

Staff-6

Staff-4

Staff-5

Staff-2

Staff-3

86

Staff-1

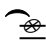
Staff-6

Staff-4

Staff-5

Staff-2

Staff-3

90 

Staff-1

Staff-6

Staff-5

Staff-2

Staff-3



94 $\text{♩} = 102,000053$ $\text{♩} = 101,000069$ $\text{♩} = 98,000060$ $\text{♩} = 80,000088$

Staff-4

Staff-5

Staff-2

Staff-3

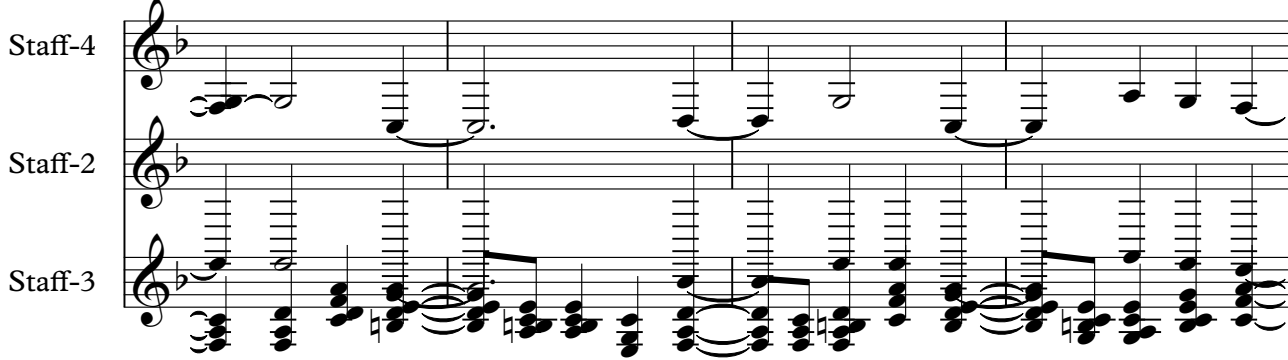


98

Staff-4

Staff-2

Staff-3



102

Staff-4

Staff-2

Staff-3

106

Staff-4

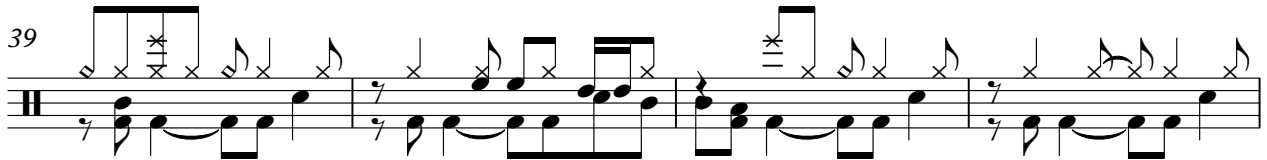
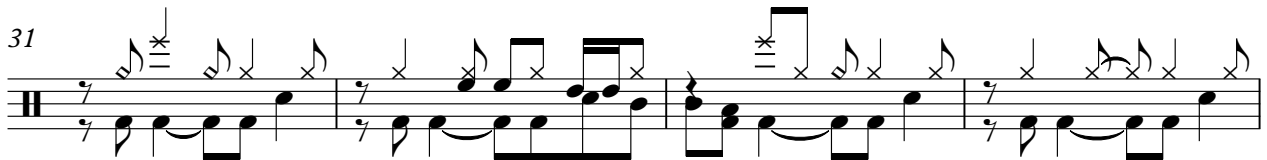
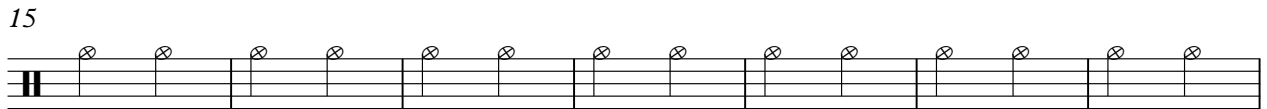
Staff-2

Staff-3

Dan Fogelberg - Same Old Lang Syne

Staff-1

♩ = 106,000137



Copyright © 1997 by Me!
All Rights Reserved

V.S.

2

Staff-1

51

55

59

63

67

71

75

79

♩ = 102,000053

86

91

3

14

Dan Fogelberg - Same Old Lang Syne

Staff-6

♩ = 106,000137
40



44



50



57



62



67



72



78

♩ = 102,000053



85

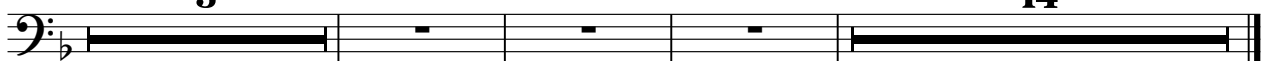


91

♩ = 102,000069

3

14



Copyright © 1997 by Me!
All Rights Reserved

Dan Fogelberg - Same Old Lang Syne

Staff-4

♩ = 106,000137

8

15

22

29

36

43

50

57

64

V.S.

Copyright © 1997 by Mel.
All Rights Reserved

71

77

♩ = 102,000053

84

94

♩ = 102,000053

101

105

Dan Fogelberg - Same Old Lang Syne
Staff-5

♩ = 106,000137

8

12

17

21

33

37

42

47

52

56

8

Copyright © 1997 by Me!
All Rights Reserved

V.S.

Dan Fogelberg - Same Old Lang Syne

Staff-2

♩ = 106,000137



6



11



17



22



27



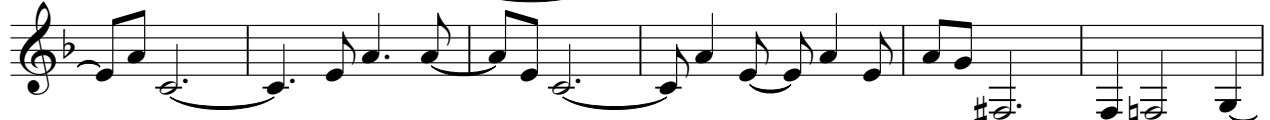
33



38



43



49



Copyright © 1997 by Mel.
All Rights Reserved

V.S.

105

A musical staff in treble clef with a key signature of one flat (B-flat). The staff contains guitar tablature and musical notation. The first four measures show individual notes on the staff with vertical lines below indicating fret positions. The last four measures show a sequence of notes connected by a slur, with vertical lines below indicating fret positions. The notes are: B-flat (2nd fret), A (1st fret), G (1st fret), F (1st fret), E (1st fret), D (1st fret), C (1st fret), and B-flat (2nd fret).

Dan Fogelberg - Same Old Lang Syne
Staff-3

♩ = 106,000137

5

9

13

17

21

25

29

33

37

Copyright © 1997 by Me!
All Rights Reserved

V.S.

41

45

49

53

57

61

65

69

73

77

♩ = 102,000053

82



86



91

♩ = 102,00005,000010,000000



96



101



105

