

Red Hot Chili Peppers - Tell me baby

0.0"
1.1,00
Intro

♩ = 109,000 145

Musical score for the Intro section (0.0" to 1.1,00). The score is in 4/4 time and features four staves: Drums, Rhythm guitar, Solo guitar, and Bass. The Rhythm guitar part is the most active, playing a series of chords and single notes. The Solo guitar, Bass, and Drums parts are mostly silent during this section.

18.7"
9.1,00
Verse

♩ = 92,000 130 109,000 145

Musical score for the Verse section (18.7" to 9.1,00). The score is in 4/4 time and features three staves: Drums, Rhythm guitar, and Bass. The Drums part starts at measure 6 with a pattern of eighth notes. The Rhythm guitar and Bass parts are also active, with the Bass playing a steady eighth-note line. The Solo guitar part is silent.

Musical score for the Verse section (10 measures). The score is in 4/4 time and features three staves: Drums, Rhythm guitar, and Bass. The Drums part continues with the eighth-note pattern. The Rhythm guitar and Bass parts continue with their respective parts. The Solo guitar part is silent.

12

Drums

Rhythm guitar

Bass

14

Drums

Rhythm guitar

Bass

16

Drums

Rhythm guitar

Bass

18

Drums

Rhythm guitar

Bass

20

Drums

Rhythm guitar

Bass

22

Drums

Rhythm guitar

Bass

24

Drums

Rhythm guitar

Bass

26

Drums

Rhythm guitar

Bass

1'02.7"
29.1,00
Chorus

28

Drums

Rhythm guitar

Bass

30

Drums

Rhythm guitar

Bass

33

Drums

Rhythm guitar

Bass

36

Drums

Rhythm guitar

Bass

39

Drums

Rhythm guitar

Bass

42

Drums

Rhythm guitar

Bass

40.2"
46.1.00
Solo 1

45

Drums

Rhythm guitar

Solo guitar

Bass

47

Drums

Rhythm guitar

Solo guitar

Bass

49

Drums

Rhythm guitar

Solo guitar

Bass

51

Drums

Rhythm guitar

Bass

53

Drums

Rhythm guitar

Bass

55

Drums

Rhythm guitar

Bass

57

Drums

Rhythm guitar

Bass

59

Drums

Rhythm guitar

Bass

61

Drums

Rhythm guitar

Bass

63

Drums

Rhythm guitar

Bass

2'24.2"
66.1,00
Chorus

65

Drums

Rhythm guitar

Bass

67

Drums

Rhythm guitar

Bass

70

Drums

Rhythm guitar

Bass

73

Drums

Rhythm guitar

Bass

76

Drums

Rhythm guitar

Bass

79

Drums

Rhythm guitar

Bass

3'016"
09.7.00
Solo 2

82

Drums

Rhythm guitar

Solo guitar

Bass

84

Drums

Rhythm guitar

Solo guitar

Bass

86

Drums

Rhythm guitar

Solo guitar

Bass

88

Drums

Rhythm guitar

Solo guitar

Bass

90

Drums

Rhythm guitar

Solo guitar

Bass

3'19.3"
91.1,00
Chorus

92

Drums

Rhythm guitar

Bass

Measures 92-94: Drums play a steady pattern of snare and bass drum. Rhythm guitar plays chords and single notes. Bass plays an eighth-note line.

95

Drums

Rhythm guitar

Bass

Measures 95-97: Drums play a steady pattern of snare and bass drum. Rhythm guitar plays chords and single notes. Bass plays an eighth-note line.

98

Drums

Rhythm guitar

Bass

Measures 98-100: Drums play a steady pattern of snare and bass drum. Rhythm guitar plays chords and single notes. Bass plays an eighth-note line.

101

Drums

Rhythm guitar

Bass

Measures 101-103: Drums play a steady pattern of snare and bass drum. Rhythm guitar plays chords and single notes. Bass plays an eighth-note line.

104

Drums

Rhythm guitar

Bass

106

Drums

Rhythm guitar

Bass

Drums

Red Hot Chili Peppers - Tell me baby

♩ = 109,000♩15 ♩ = 92,000♩130 = 109,000♩145

7

11

15

19

23

27

31

35

39

43

V.S.

Drums

47

51

55

59

63

67

71

75

79

82

Drums

85

Musical notation for drum set, measures 85-88. The notation is on a five-line staff with a double bar line on the left. It features a bass drum line with quarter notes and eighth notes, and a snare drum line with eighth notes and a triplet. An asterisk is placed above the first eighth note of the snare line in the third measure.

89

Musical notation for drum set, measures 89-92. The notation is on a five-line staff with a double bar line on the left. It features a bass drum line with quarter notes and eighth notes, and a snare drum line with eighth notes and a triplet. An asterisk is placed above the first eighth note of the snare line in the third measure.

93

Musical notation for drum set, measures 93-96. The notation is on a five-line staff with a double bar line on the left. It features a bass drum line with quarter notes and eighth notes, and a snare drum line with eighth notes and a triplet. An asterisk is placed above the first eighth note of the snare line in the third measure.

97

Musical notation for drum set, measures 97-100. The notation is on a five-line staff with a double bar line on the left. It features a bass drum line with quarter notes and eighth notes, and a snare drum line with eighth notes and a triplet. An asterisk is placed above the first eighth note of the snare line in the third measure.

101

Musical notation for drum set, measures 101-104. The notation is on a five-line staff with a double bar line on the left. It features a bass drum line with quarter notes and eighth notes, and a snare drum line with eighth notes and a triplet. An asterisk is placed above the first eighth note of the snare line in the third measure.

105

Musical notation for drum set, measures 105-108. The notation is on a five-line staff with a double bar line on the left. It features a bass drum line with quarter notes and eighth notes, and a snare drum line with eighth notes and a triplet. An asterisk is placed above the first eighth note of the snare line in the third measure. The notation ends with a double bar line and a final chord symbol.

Rhythm guitar

Red Hot Chili Peppers - Tell me baby

♩ = 104,000 045

6 ♩ = 92,000 045

11

14

17

20

23

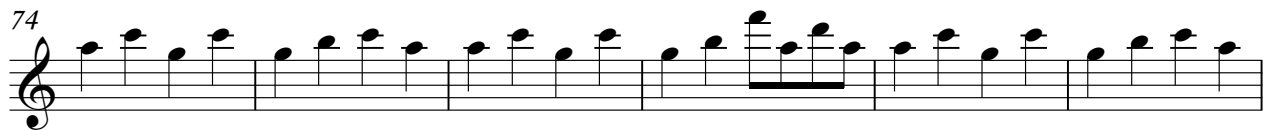
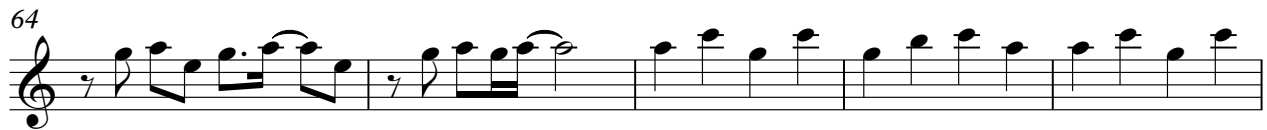
26

30

36

V.S.

Rhythm guitar



Rhythm guitar

80

84

87

91

97

102

105

Solo guitar

Red Hot Chili Peppers - Tell me baby

♩ = 104,000045 ♩ = 92,000130 ♩ = 109,000145

7 37

Detailed description: This musical staff is in 4/4 time. It begins with a whole note chord marked with the number 7. The second measure contains a whole rest. The third measure contains a whole note chord marked with the number 37. The fourth measure contains a whole note chord marked with the number 0. The fifth measure contains a whole note chord marked with the number 0. The sixth measure contains a whole note chord marked with the number 0.

49

33 3

Detailed description: This musical staff starts with a key signature change to one sharp (F#) indicated by a sharp sign and a 'b' symbol above the staff. The first measure is a whole note chord marked with the number 33. The second measure contains a whole note chord marked with the number 0. The third measure contains a whole note chord marked with the number 0. The fourth measure contains a triplet of eighth notes marked with the number 3. The fifth measure contains a quarter note. The sixth measure contains a quarter note. The seventh measure contains a quarter note. The eighth measure contains a quarter note. The ninth measure contains a quarter note. The tenth measure contains a quarter note.

86

Detailed description: This musical staff contains a complex melodic line starting at measure 86. It features a series of eighth and sixteenth notes, including some beamed eighth notes and sixteenth notes. The line is primarily composed of eighth notes with some sixteenth notes interspersed.

89

19

Detailed description: This musical staff starts at measure 89. It begins with a key signature change to one sharp (F#) indicated by a sharp sign and a 'b' symbol above the staff. The first measure contains a quarter note. The second measure contains a quarter note. The third measure contains a quarter note. The fourth measure contains a quarter note. The fifth measure contains a whole note chord marked with the number 19. The sixth measure contains a whole note chord marked with the number 0. The seventh measure contains a whole note chord marked with the number 0. The eighth measure contains a whole note chord marked with the number 0. The ninth measure contains a whole note chord marked with the number 0. The tenth measure contains a whole note chord marked with the number 0.

Red Hot Chili Peppers - Tell me baby

Bass

♩ = 109,000045 ♩ = 92,000130 ♩ = 109,000145

7

7

11

11

14

14

17

17

19

19

22

22

25

25

27

27

30

30

33

33

V.S.



64

67

70

73

76

79

83

85

87

89

V.S.

92



95



98



101



104



106

