

Rem - Man on the moon

♩ = 250,000000

WinJammer Demo



WinJammer Demo

8

♩ = 250,000000



WinJammer Demo



WinJammer Demo

15

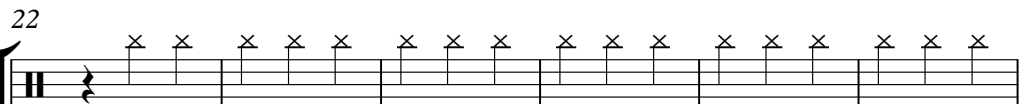


WinJammer Demo



WinJammer Demo

22



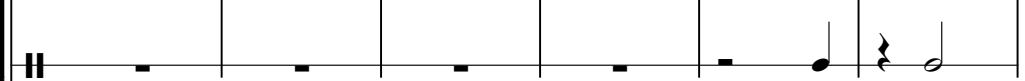
WinJammer Demo



WinJammer Demo



WinJammer Demo



WinJammer Demo



28

WinJammer Demo

WinJammer Demo

WinJammer Demo

WinJammer Demo

WinJammer Demo



34

WinJammer Demo

WinJammer Demo

WinJammer Demo

WinJammer Demo

WinJammer Demo

40

WinJammer Demo

WinJammer Demo

WinJammer Demo

WinJammer Demo

WinJammer Demo



46

WinJammer Demo

WinJammer Demo

WinJammer Demo

WinJammer Demo

WinJammer Demo

52

WinJammer Demo

WinJammer Demo

WinJammer Demo

WinJammer Demo

WinJammer Demo



58

WinJammer Demo

WinJammer Demo

WinJammer Demo

WinJammer Demo

WinJammer Demo

64

WinJammer Demo

WinJammer Demo

WinJammer Demo

WinJammer Demo

WinJammer Demo



70

WinJammer Demo

WinJammer Demo

WinJammer Demo

WinJammer Demo

WinJammer Demo

76

WinJammer Demo

WinJammer Demo

WinJammer Demo

WinJammer Demo

WinJammer Demo



82

WinJammer Demo

WinJammer Demo

WinJammer Demo

WinJammer Demo

WinJammer Demo

WinJammer Demo

88

WinJammer Demo

WinJammer Demo

WinJammer Demo

WinJammer Demo



94

WinJammer Demo

WinJammer Demo

WinJammer Demo

WinJammer Demo



100

WinJammer Demo

WinJammer Demo

WinJammer Demo

WinJammer Demo

106

WinJammer Demo

WinJammer Demo

WinJammer Demo

WinJammer Demo

WinJammer Demo

WinJammer Demo

WinJammer Demo



112

WinJammer Demo

WinJammer Demo

WinJammer Demo

WinJammer Demo

WinJammer Demo

WinJammer Demo

WinJammer Demo

118

WinJammer Demo

WinJammer Demo

WinJammer Demo

WinJammer Demo

WinJammer Demo

WinJammer Demo



124

WinJammer Demo

WinJammer Demo

WinJammer Demo

WinJammer Demo

WinJammer Demo

WinJammer Demo

130

WinJammer Demo

WinJammer Demo

WinJammer Demo

WinJammer Demo

WinJammer Demo



136

WinJammer Demo

WinJammer Demo

WinJammer Demo

WinJammer Demo

WinJammer Demo

142

WinJammer Demo

WinJammer Demo

WinJammer Demo

WinJammer Demo

WinJammer Demo



148

WinJammer Demo

WinJammer Demo

WinJammer Demo

WinJammer Demo

WinJammer Demo

154

WinJammer Demo

WinJammer Demo

WinJammer Demo

WinJammer Demo

WinJammer Demo



160

WinJammer Demo

WinJammer Demo

WinJammer Demo

WinJammer Demo

WinJammer Demo

166

WinJammer Demo

WinJammer Demo

WinJammer Demo

WinJammer Demo

WinJammer Demo

WinJammer Demo



172

WinJammer Demo

WinJammer Demo

WinJammer Demo

WinJammer Demo

177

WinJammer Demo

WinJammer Demo

WinJammer Demo

WinJammer Demo



183

WinJammer Demo

WinJammer Demo

WinJammer Demo

WinJammer Demo

189

WinJammer Demo

WinJammer Demo

WinJammer Demo

WinJammer Demo

WinJammer Demo

WinJammer Demo

WinJammer Demo



195

WinJammer Demo

WinJammer Demo

WinJammer Demo

WinJammer Demo

WinJammer Demo

WinJammer Demo

WinJammer Demo

201

WinJammer Demo

WinJammer Demo

WinJammer Demo

WinJammer Demo

WinJammer Demo

WinJammer Demo

WinJammer Demo



207

WinJammer Demo

WinJammer Demo

WinJammer Demo

WinJammer Demo

WinJammer Demo

WinJammer Demo

213

WinJammer Demo

WinJammer Demo

WinJammer Demo

WinJammer Demo

WinJammer Demo

WinJammer Demo



219

WinJammer Demo

WinJammer Demo

WinJammer Demo

WinJammer Demo

WinJammer Demo

WinJammer Demo

225

WinJammer Demo

WinJammer Demo

WinJammer Demo

WinJammer Demo

WinJammer Demo

WinJammer Demo



231

WinJammer Demo

WinJammer Demo

WinJammer Demo

WinJammer Demo

WinJammer Demo

WinJammer Demo

237

WinJammer Demo

WinJammer Demo

WinJammer Demo

WinJammer Demo

WinJammer Demo



243

WinJammer Demo

WinJammer Demo

WinJammer Demo

WinJammer Demo

WinJammer Demo

249

WinJammer Demo

WinJammer Demo

WinJammer Demo

WinJammer Demo

WinJammer Demo



255

WinJammer Demo

WinJammer Demo

WinJammer Demo

WinJammer Demo

WinJammer Demo

261

WinJammer Demo

WinJammer Demo

WinJammer Demo

WinJammer Demo

WinJammer Demo



267

WinJammer Demo

WinJammer Demo

WinJammer Demo

WinJammer Demo

WinJammer Demo

273

WinJammer Demo

WinJammer Demo

WinJammer Demo

WinJammer Demo

WinJammer Demo

WinJammer Demo



279

WinJammer Demo

WinJammer Demo

WinJammer Demo

WinJammer Demo

284

WinJammer Demo

WinJammer Demo

WinJammer Demo

WinJammer Demo



289

WinJammer Demo

WinJammer Demo

WinJammer Demo

WinJammer Demo

295

WinJammer Demo

WinJammer Demo

WinJammer Demo

WinJammer Demo

WinJammer Demo

WinJammer Demo

WinJammer Demo



301

WinJammer Demo

WinJammer Demo

WinJammer Demo

WinJammer Demo

WinJammer Demo

WinJammer Demo

WinJammer Demo

307

WinJammer Demo

WinJammer Demo

WinJammer Demo

WinJammer Demo

WinJammer Demo

WinJammer Demo

WinJammer Demo



313

WinJammer Demo

WinJammer Demo

WinJammer Demo

WinJammer Demo

WinJammer Demo

WinJammer Demo

WinJammer Demo

319

WinJammer Demo

WinJammer Demo

WinJammer Demo

WinJammer Demo

WinJammer Demo

WinJammer Demo



325

WinJammer Demo

WinJammer Demo

WinJammer Demo

WinJammer Demo

WinJammer Demo

WinJammer Demo

331

WinJammer Demo

WinJammer Demo

WinJammer Demo

WinJammer Demo

WinJammer Demo

WinJammer Demo

WinJammer Demo



337

WinJammer Demo

WinJammer Demo

WinJammer Demo

WinJammer Demo

WinJammer Demo

WinJammer Demo

WinJammer Demo

♩ = 250,000000 ♩ = 250,000000

10 **11**

26

34

42

50

58

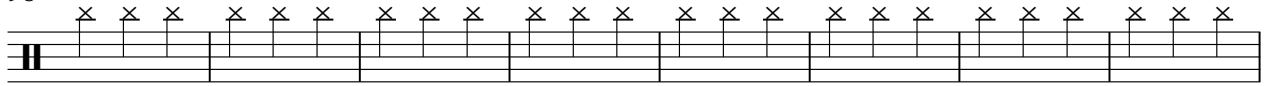
66

74

82

90

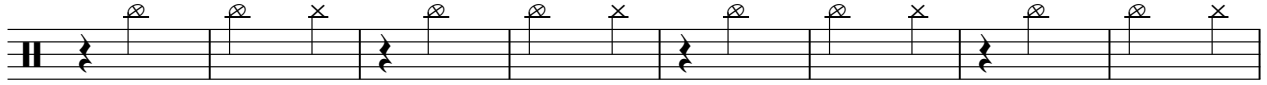
98



106



115



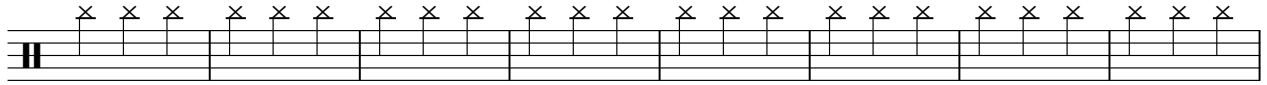
123



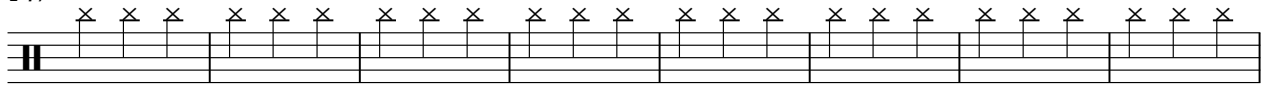
131



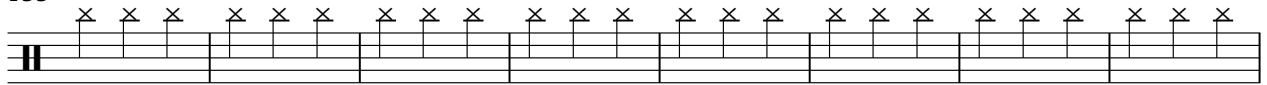
139



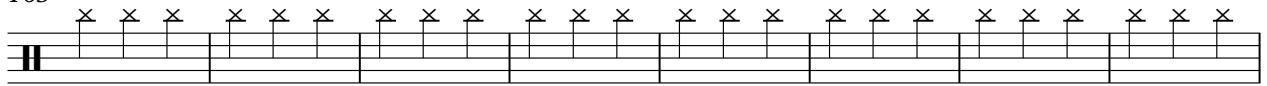
147



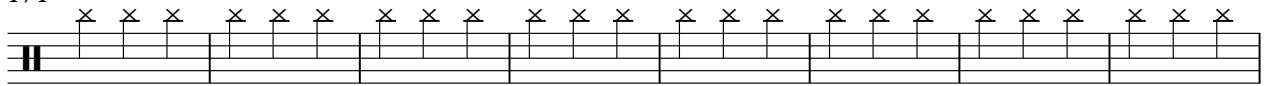
155



163



171



179

187

195

203

211

220

228

236

244

252

260

A single staff of music with a double bar line at the beginning. It contains 12 measures, each with three 'x' marks above the staff, representing a triplet of eighth notes.

268

A single staff of music with a double bar line at the beginning. It contains 12 measures, each with three 'x' marks above the staff, representing a triplet of eighth notes.

276

A single staff of music with a double bar line at the beginning. It contains 12 measures, each with three 'x' marks above the staff, representing a triplet of eighth notes.

284

A single staff of music with a double bar line at the beginning. It contains 12 measures, each with three 'x' marks above the staff, representing a triplet of eighth notes.

292

A single staff of music with a double bar line at the beginning. It contains 12 measures, each with three 'x' marks above the staff, representing a triplet of eighth notes. The final measure has a single 'x' mark with a dot above it, and the staff ends with a horizontal line.

300

A single staff of music with a double bar line at the beginning. It contains 12 measures. Each measure has a circled 'x' above the staff, with a slash and a dot below it. There are also three 'x' marks above the staff in each measure.

308

A single staff of music with a double bar line at the beginning. It contains 12 measures. Each measure has a circled 'x' above the staff, with a slash and a dot below it. There are also three 'x' marks above the staff in each measure.

316

A single staff of music with a double bar line at the beginning. It contains 12 measures. Each measure has a circled 'x' above the staff, with a slash and a dot below it. There are also three 'x' marks above the staff in each measure.

324

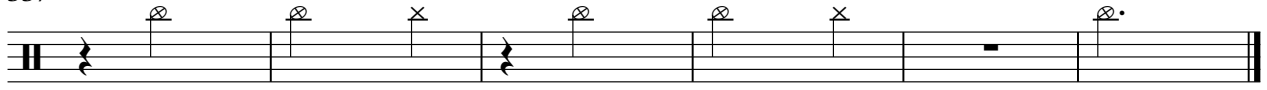
A single staff of music with a double bar line at the beginning. It contains 12 measures. Each measure has a circled 'x' above the staff, with a slash and a dot below it. There are also three 'x' marks above the staff in each measure.

332

A single staff of music with a double bar line at the beginning. It contains 12 measures. Each measure has a circled 'x' above the staff, with a slash and a dot below it. There are also three 'x' marks above the staff in each measure.

WinJammer Demo

337



♩ = 250,000000 ♩ = 250,000000

10 **12**

28

38

48

58

67

77

87

97

105

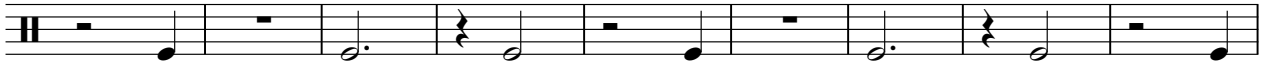
305



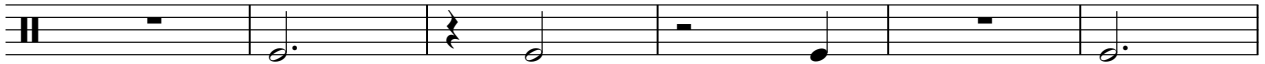
314



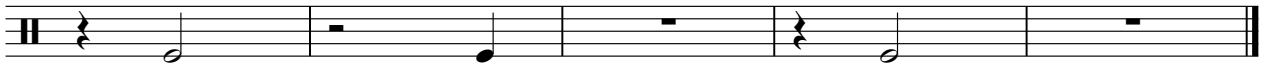
323



332



338



♩ = 250,000000 ♩ = 250,000000

10 16 4 *

33 5 4 4 *

54 4 4 * 5

71 4 4 * 5

87 19

113 5 4

128 4 4 4

144 * 5 4 4 *

161 5 4 19

191 5

203



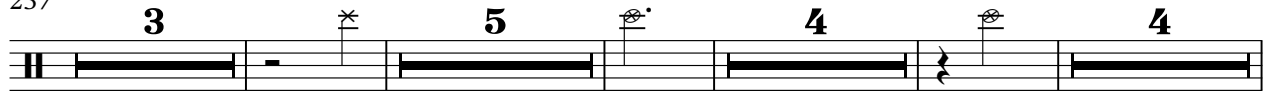
216



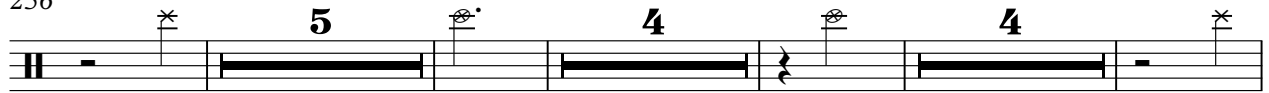
227



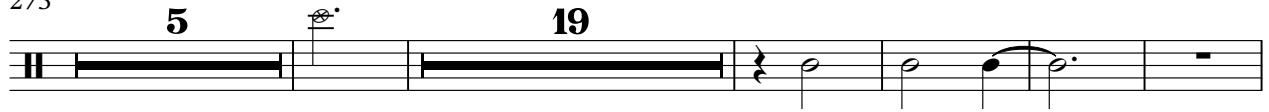
237



256



273



302



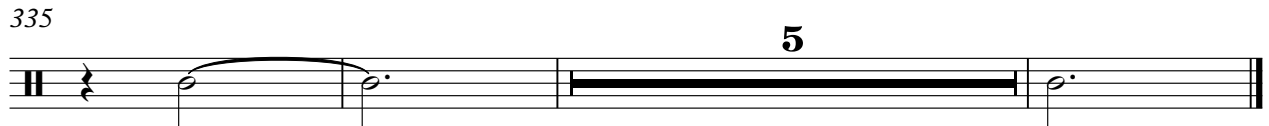
315



326



335



2

WinJammer Demo

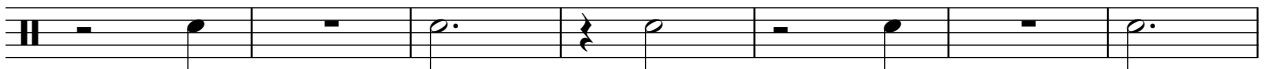
311



320



329



336



♩ = 250,000000 ♩ = 250,000000

3/4 10 15 4

33 4 3 4

48 4 3

60 4 4 3

75 4 4

87 46 3

140 4 4 3

155 4 4 3

170 68 4

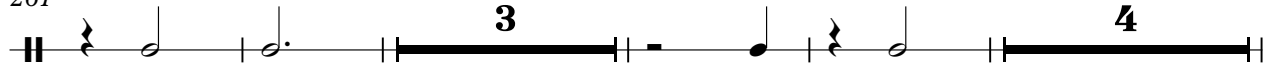
246 3 4 4

Detailed description: The image displays a guitar score for the song 'Man on the Moon' by The Doors. It consists of ten horizontal staves of music. Each staff begins with a double bar line and a time signature of 3/4. The notation includes various musical symbols such as notes, rests, and bar lines. Above the staves, there are fret numbers (10, 15, 4, 4, 3, 4, 46, 4, 4, 3, 68, 4, 3, 4, 4) indicating where to place fingers on the strings. Above the first two staves, there are tempo markings: a quarter note followed by '= 250,000000'. The staves are numbered on the left side: 33, 48, 60, 75, 87, 140, 155, 170, and 246. The notation is a simplified form of guitar tablature, focusing on fret numbers and rhythmic patterns rather than standard musical notation.

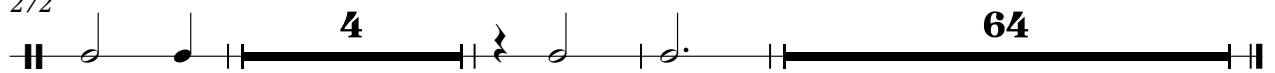
2

WinJammer Demo

261



272



♩ = 250,000000 ♩ = 250,000000

10

18 66

90

98 2

107 9 52

172

181

189 9

204 74

283 2

2

WinJammer Demo

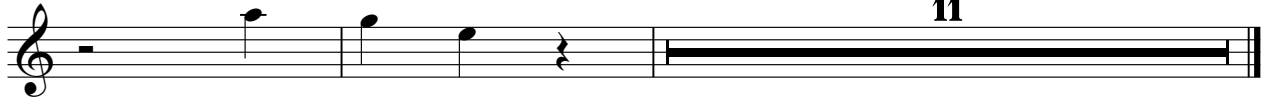
292



300



330



♩ = 250,000000 ♩ = 250,000000

10 96

111

120

127 66

199

209 2

219

229

235 62

299



308



318



327



335



♩ = 250,000000



9 ♩ = 250,000000



18



27



35



43



52



61



70



78



87



95



104



112



120



130



138



147



156



165



