

Denver John - Leaving On A Jet Plane2

♩ = 130,000137

drum

piano

bass

5

drum

piano

bass

9

drum

piano

bass

13

drum

piano

bass

17

drum

piano

bass

22

drum

piano

bass

26

drum

piano

bass

30

drum

piano

bass

34

drum

piano

bass

This system covers measures 34 to 37. The drum part features a consistent pattern of quarter notes with 'x' marks above them, indicating a specific drum sound. The piano part is in treble clef with a key signature of one sharp (F#) and a 3/8 time signature. It begins with a dotted quarter note followed by eighth notes, then transitions into a series of chords with long, sweeping ties. The bass part is in bass clef with the same key signature, playing a steady eighth-note line.

38

drum

piano

bass

This system covers measures 38 to 41. The drum part continues with the same quarter-note pattern. The piano part starts with a rest, followed by eighth notes and chords, maintaining the melodic and harmonic flow. The bass part continues with its eighth-note line, providing a solid rhythmic foundation.

42

drum

piano

bass

This system covers measures 42 to 45. The drum part remains consistent. The piano part shows more complex rhythmic patterns with eighth notes and chords. The bass part continues with its eighth-note line, with some notes beamed together.

46

drum

piano

bass

This system covers measures 46 to 49. The drum part continues with the quarter-note pattern. The piano part features a mix of eighth notes and chords. The bass part continues with its eighth-note line, ending with a final note in the measure.

50

drum

piano

bass

54

drum

piano

bass

58

drum

piano

bass

62

drum

piano

bass

66

drum

piano

bass

This system covers measures 66 to 69. The drum part features a consistent pattern of quarter notes with 'x' marks above them, indicating cymbal hits. The piano part is in treble clef with a key signature of one sharp (F#) and contains complex chordal textures with many beamed notes and slurs. The bass part is in bass clef with a key signature of one sharp (F#) and consists of a steady eighth-note line.

70

drum

piano

bass

This system covers measures 70 to 73. The drum part continues with the same quarter-note pattern with cymbal hits. The piano part shows a change in texture, with some notes held across measures and a more melodic line in the right hand. The bass part continues with its eighth-note pattern.

74

drum

piano

bass

This system covers measures 74 to 77. The drum part remains consistent. The piano part features a more active right hand with frequent beamed notes and slurs. The bass part continues with its eighth-note pattern.

78

drum

piano

bass

This system covers measures 78 to 81. The drum part continues with the quarter-note pattern with cymbal hits. The piano part has a more complex texture with many beamed notes and slurs. The bass part continues with its eighth-note pattern.

82

drum

piano

bass

86

drum

piano

bass

90

drum

piano

bass

94

drum

piano

bass

98

drum

piano

bass

This system covers measures 98 to 101. The drum part features a consistent pattern of eighth notes with 'x' marks above them, indicating cymbal hits. The piano part consists of chords and melodic lines in the right hand, while the bass part provides a steady accompaniment with eighth notes.

102

drum

piano

bass

This system covers measures 102 to 105. The drum part continues with the eighth-note pattern. The piano part shows more complex chordal textures and melodic movement in the right hand. The bass part maintains its accompaniment role.

106

drum

piano

bass

This system covers measures 106 to 109. The drum part remains consistent. The piano part features a mix of chords and melodic lines. The bass part continues with its accompaniment.

110

drum

piano

bass

This system covers measures 110 to 113. The drum part continues with the eighth-note pattern. The piano part includes a triplet of eighth notes in the right hand. The bass part continues with its accompaniment.

8

114

drum

piano

bass

116

drum

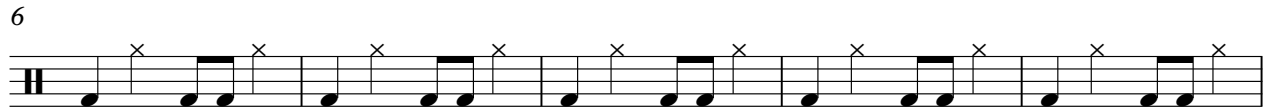
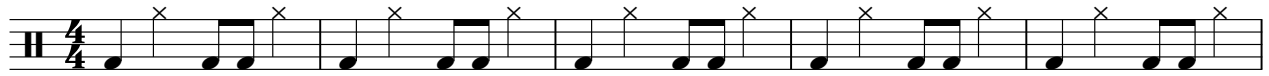
piano

bass

Denver John - Leaving On A Jet Plane2

drum

♩ = 130,000137



V.S.

2

drum

52



58



64



69



75



80



86



91



97



102



108



114



piano

Denver John - Leaving On A Jet Plane2

$\text{♩} = 130,000137$

6

11

16

22

27

32

37

42

47

V.S.

52

58

63

68

73

78

82

87

93

98

103

piano

3

108

113

116

Denver John - Leaving On A Jet Plane2

bass

♩ = 130,000137

7

14

20

26

32

37

43

50

56

V.S.

62

68

74

81

87

93

99

105

111

115