

# Denver John - Libyan On A Jet Plane2(Parodie)

♩ = 130,000137

drum

piano

bass

5

drum

piano

bass

9

drum

piano

bass

13

drum

piano

bass

17

drum

piano

bass

22

drum

piano

bass

26

drum

piano

bass

30

drum

piano

bass

34

drum

piano

bass

38

drum

piano

bass

42

drum

piano

bass

46

drum

piano

bass

50

drum

piano

bass

54

drum

piano

bass

58

drum

piano

bass

62

drum

piano

bass

66

drum

piano

bass

This system covers measures 66 to 69. The drum part features a consistent pattern of quarter notes with 'x' marks above them, indicating cymbal hits. The piano part is in treble clef with a key signature of one sharp (F#), showing a melodic line with eighth and quarter notes, some beamed together, and occasional rests. The bass part is in bass clef with the same key signature, providing a steady accompaniment of quarter notes.

70

drum

piano

bass

This system covers measures 70 to 73. The drum part continues with the same quarter-note pattern. The piano part shows more complex phrasing, including a half-note chord in measure 71 and a quarter rest in measure 72. The bass part maintains a steady quarter-note accompaniment.

74

drum

piano

bass

This system covers measures 74 to 77. The drum part remains consistent. The piano part features a series of eighth-note runs in measures 74 and 75, followed by quarter notes. The bass part continues with a steady quarter-note accompaniment.

78

drum

piano

bass

This system covers measures 78 to 81. The drum part continues with the same quarter-note pattern. The piano part has a melodic line with eighth and quarter notes, including some beamed eighth notes. The bass part continues with a steady quarter-note accompaniment.

82

drum

piano

bass

86

drum

piano

bass

90

drum

piano

bass

94

drum

piano

bass

98

drum

piano

bass

This system covers measures 98 to 101. The drum part features a consistent pattern of eighth notes with 'x' marks above them, indicating cymbal hits. The piano part consists of chords and melodic lines in the right hand, while the bass part provides a steady accompaniment with eighth notes.

102

drum

piano

bass

This system covers measures 102 to 105. The drum part continues with the eighth-note pattern. The piano part shows more complex chordal textures and melodic movement in the right hand. The bass part maintains its accompaniment role.

106

drum

piano

bass

This system covers measures 106 to 109. The drum part remains consistent. The piano part features a mix of chords and melodic lines. The bass part continues with its accompaniment.

110

drum

piano

bass

This system covers measures 110 to 113. The drum part continues with the eighth-note pattern. The piano part includes a triplet of eighth notes in the right hand. The bass part continues with its accompaniment.

8

114

drum

piano

bass

116

drum

piano

bass



# Denver John - Libyan On A Jet Plane2(Parodie)

drum

♩ = 130,000137



6



11



16



21



26



31



36



41



47



V.S.



108



114



# Denver John - Libyan On A Jet Plane2(Parodie)

piano

$\text{♩} = 130,000137$

6

11

16

22

27

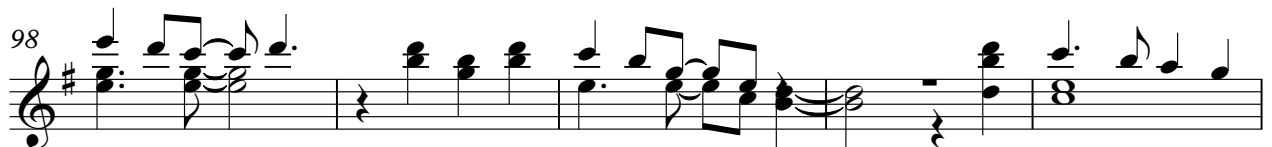
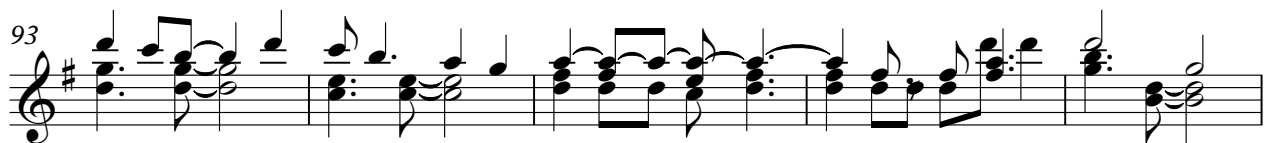
32

37

42

47

V.S.



103 piano 3

108

113

116

# Denver John - Libyan On A Jet Plane2(Parodie)

bass

♩ = 130,000137

7

14

20

26

32

37

43

50

56

V.S.

62

First musical staff containing measures 62 through 67. The staff is in bass clef with a key signature of one sharp (F#). It features a sequence of eighth and quarter notes, with some measures containing beamed eighth notes.

68

Second musical staff containing measures 68 through 73. It continues the melodic line with eighth notes and includes some phrasing slurs over groups of notes.

74

Third musical staff containing measures 74 through 80. The notation includes quarter notes and eighth notes, with some measures having a fermata-like feel.

81

Fourth musical staff containing measures 81 through 86. This section is characterized by a series of half notes and quarter notes, creating a steady, rhythmic accompaniment.

87

Fifth musical staff containing measures 87 through 92. It features a consistent eighth-note pattern across several measures.

93

Sixth musical staff containing measures 93 through 98. The staff shows a mix of quarter and eighth notes, with some phrasing slurs.

99

Seventh musical staff containing measures 99 through 104. It includes beamed eighth notes and quarter notes, with some phrasing slurs.

105

Eighth musical staff containing measures 105 through 110. The notation features a variety of note values including quarter and eighth notes.

111

Ninth musical staff containing measures 111 through 114. It continues the melodic progression with quarter and eighth notes.

115

Tenth musical staff containing measures 115 through 118. This section concludes the page with a final melodic phrase and a double bar line.