

Depeche Mode - Dreaming Of Me

♩ = 135,000137

Drums

Percussion

Synth

Synth

♩ = 135,000137



8

Vocal

Drums

Perc.

Synth

Synth

♩ = 135,000137



14

Vocal

Drums

Perc.

Synth

Synth

♩ = 135,000137

20

Vocal

Drums

Perc.

Synth

Synth



26

Vocal

Drums

Perc.

Synth

Synth



32

Vocal

Drums

Perc.

Synth

Synth

38

Vocal

Drums

Perc.

Synth

Synth



44

Vocal

Drums

Perc.

Synth

Synth



50

Vocal

Drums

Perc.

Synth

Synth

56

Drums

Perc.

Synth

Synth



62

Drums

Perc.

Synth

Synth



67

Drums

Perc.

Synth

Synth

73

Vocal

Drums

Perc.

Synth

Synth

Synth



79

Vocal

Drums

Perc.

Synth

Synth



85

Vocal

Drums

Perc.

Synth

Synth

91

Vocal

Drums

Perc.

Synth

Synth



97

Vocal

Drums

Perc.

Synth

Synth



103

Vocal

Drums

Perc.

Synth

Synth

109

Vocal

Drums

Perc.

Synth

Synth



115

Vocal

Ob.

Drums

Perc.

Synth

Synth

Synth

Synth

118

Vocal

Ob.

Drums

Perc.

Synth

Synth

Synth

Synth

Vocal

Depeche Mode - Dreaming Of Me

♩ = 135,000137

12

17

22

28

3

37

42

48

52

22

77



82



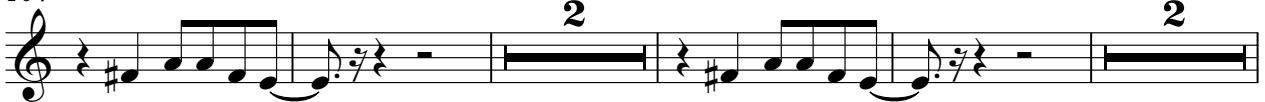
87



94



104



112



117



45



50



54



58



62



66



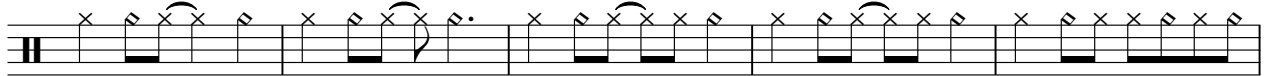
71



76



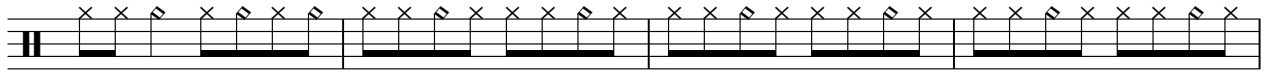
81



86



91



95



99



103



107



111



115



118



Depeche Mode - Dreaming Of Me

Percussion

♩ = 135,000137

4

10

16

22

27

32

37

43

49

54

V.S.

59



64



69



74



79



84



89



95



101



106



111



116



119



Synth

Depeche Mode - Dreaming Of Me

♩ = 135,000137

58



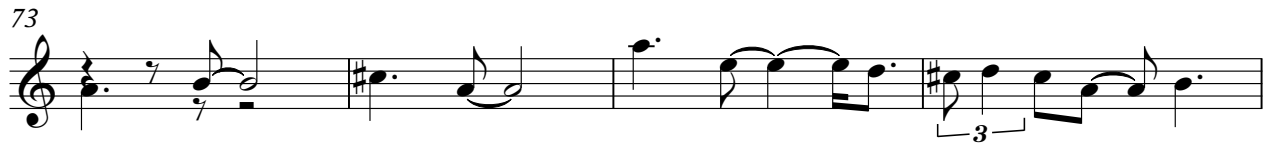
62



67



73



77

40



119



Synth

Depeche Mode - Dreaming Of Me

♩ = 135,000137



4



117

Depeche Mode - Dreaming Of Me

Synth

♩ = 135,000137

4

8

12

17

22

27

31

35

40

45

V.S.



111



Musical notation for measure 111, starting with a treble clef and a 7-measure rest. The melody consists of eighth notes: G4, A4, B4, C5, B4, A4, G4 in the first measure; G4, A4, B4, C5, B4, A4, G4 in the second measure; G4, A4, B4, C5, B4, A4, G4 in the third measure; G4, A4, B4, C5, B4, A4, G4 in the fourth measure.

115



Musical notation for measure 115, starting with a treble clef and a 7-measure rest. The melody consists of eighth notes: G4, A4, B4, C5, B4, A4, G4 in the first measure; G4, A4, B4, C5, B4, A4, G4 in the second measure; G4, A4, B4, C5, B4, A4, G4 in the third measure.

118



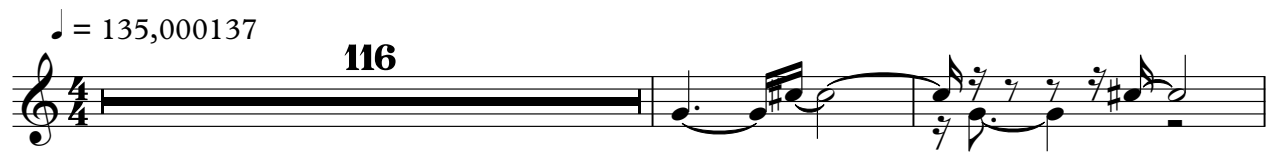
Musical notation for measure 118, starting with a treble clef and a 7-measure rest. The melody consists of eighth notes: G4, A4, B4, C5, B4, A4, G4 in the first measure; G4, A4, B4, C5, B4, A4, G4 in the second measure; G4, A4, B4, C5, B4, A4, G4 in the third measure. The measure ends with a double bar line.

Synth

Depeche Mode - Dreaming Of Me

♩ = 135,000137

116



119



Depeche Mode - Dreaming Of Me

Synth

♩ = 135,000137

4

8

12

16

20

24

28

32

36

40

V.S.

44

48

52

56

60

64

67

71

75

79

This image displays a musical score for a synthesizer instrument, labeled 'Synth' at the top. The score is organized into ten systems, each beginning with a measure number: 83, 87, 91, 95, 99, 103, 107, 111, 115, and 118. Each system contains four measures of music. The notation is written on a single treble clef staff. The music consists of a continuous sequence of eighth notes, with each measure containing four notes. The notes are arranged in a pattern that suggests a specific melodic or harmonic progression, though the exact notes are not explicitly named. The score concludes with a double bar line at the end of the final system.