

Diana & The Supremes Ross - When You Tell Me That You Love Me

$\text{♩} = 200,000000$ $\text{♩} = 80,000000$
0261TELL

Panpipes

Cor Anglais

Percussion

Electric Guitar

Electric Guitar

7-string Electric Guitar

Alto

Celesta

Synth Bass

Synth Strings

Pad 3 (Polysynth)

FX 5 (Brightness)

Viola

Violoncello

Solo

6

Pan. Perc. Cel. Syn. Str. Pad 3 Vc. Solo

This system contains measures 6 through 9. The Pan flute part begins with a melodic line in 2/4 time, transitioning to 4/4. The Percussion part features a complex rhythmic pattern with sixteenth notes and rests, marked with '6' above the staff. The Cello part has a sustained chord in 2/4 time. The Synthesizer strings part has a sustained chord in 4/4 time. The Pad 3 part has a sustained chord in 2/4 time. The Violoncello part has a sustained chord in 4/4 time. The Solo part has a melodic line in 2/4 time, transitioning to 4/4.



10

Pan. Syn. Str. Vc. Solo

This system contains measures 10 through 14. The Pan flute part continues with a melodic line. The Synthesizer strings part has a sustained chord. The Violoncello part has a sustained chord. The Solo part continues with a melodic line.



15

Pan. Perc. E. Gtr. S. Bass Syn. Str. Vla. Vc. Solo

This system contains measures 15 through 19. The Pan flute part features a melodic line with triplets. The Percussion part has a rhythmic pattern with eighth notes. The Electric guitar part has a melodic line with triplets. The Solo bass part has a melodic line with triplets. The Synthesizer strings part has a sustained chord. The Viola part has a melodic line with triplets. The Violoncello part has a sustained chord. The Solo part continues with a melodic line.

20

Pan. Perc. E. Gtr. S. Bass Syn. Str. Vla. Vc. Solo

This musical score block covers measures 20 through 23. It features eight staves: Pan. (Pans), Perc. (Percussion), E. Gtr. (Electric Guitar), S. Bass (Soprano Bass), Syn. Str. (Synthesizer Strings), Vla. (Viola), Vc. (Violoncello), and Solo (Solo). The Pan. part has a melodic line with triplets and a fermata. Perc. has a steady rhythmic pattern. E. Gtr. has a melodic line with a fermata. S. Bass has a simple bass line. Syn. Str. has block chords. Vla. has a melodic line with a fermata. Vc. has a simple bass line. Solo has a melodic line with a fermata.



24

Pan. Perc. E. Gtr. S. Bass Syn. Str. Vla. Vc. Solo

This musical score block covers measures 24 through 27. It features the same eight staves as the previous block. The Pan. part has a melodic line with a fermata. Perc. has a steady rhythmic pattern. E. Gtr. has a melodic line with a fermata. S. Bass has a simple bass line. Syn. Str. has block chords. Vla. has a melodic line with a fermata. Vc. has a simple bass line. Solo has a melodic line with a fermata.

28

Pan.
Perc.
E. Gtr.
S. Bass
Syn. Str.
Vla.
Vc.
Solo

Detailed description: This musical score covers measures 28 to 32. The Pan flute part features a melodic line with eighth and sixteenth notes. The Percussion part has a consistent rhythmic pattern of eighth notes. The Electric Guitar part plays a series of chords and single notes. The Solo part features a complex, multi-measure rest followed by a melodic line. The other instruments (S. Bass, Syn. Str., Vla., Vc.) provide harmonic support with various chordal textures.



33

Pan.
C. A.
Perc.
E. Gtr.
S. Bass
Syn. Str.
Vla.
Vc.
Solo

Detailed description: This musical score covers measures 33 to 37. The Pan flute part is mostly silent, with a melodic line starting in measure 34. The Clarinet in A (C. A.) part has a long multi-measure rest of 6 measures. The Percussion part continues with its rhythmic pattern. The Electric Guitar part has a melodic line with some chords. The Solo part has a melodic line with some chords. The other instruments (S. Bass, Syn. Str., Vla., Vc.) provide harmonic support with various chordal textures.

37

Pan. Perc. E. Gtr. S. Bass Syn. Str. Vla. Vc. Solo

This musical score covers measures 37 to 41. The Pan flute part features a melodic line with triplets in measures 38, 39, and 41. The Percussion part provides a steady rhythmic accompaniment. The Electric Guitar part has a syncopated rhythm. The Solo part features a complex, multi-measure rest in measure 38, followed by a melodic line. The other instruments (S. Bass, Syn. Str., Vla., Vc.) provide harmonic support with various chordal textures.



42

Pan. Perc. E. Gtr. S. Bass Syn. Str. Vla. Vc. Solo

This musical score covers measures 42 to 46. The Pan flute part continues with a melodic line, including a triplet in measure 43. The Percussion part maintains the rhythmic pattern. The Electric Guitar part has a syncopated rhythm. The Solo part features a complex, multi-measure rest in measure 42, followed by a melodic line. The other instruments (S. Bass, Syn. Str., Vla., Vc.) provide harmonic support with various chordal textures.

46

Pan.
Perc.
E. Gtr.
S. Bass
Syn. Str.
Vla.
Vc.
Solo

Detailed description: This block contains the musical score for measures 46 through 49. The score is arranged in a standard orchestral layout with ten staves. From top to bottom, the staves are: Pan. (Percussion), Perc. (Percussion), E. Gtr. (Electric Guitar), S. Bass (Soprano Bass), Syn. Str. (Synthesizer Strings), Vla. (Viola), Vc. (Violoncello), and Solo (Soloist). The key signature is one flat (B-flat major/D minor). The time signature is 4/4. The Pan. part features a complex rhythmic pattern with various note values and rests. The Perc. part has a steady, rhythmic accompaniment. The E. Gtr. part plays a melodic line with various accidentals. The S. Bass part provides a bass line with eighth and quarter notes. The Syn. Str. part consists of block chords and arpeggiated figures. The Vla. part has a melodic line with some slurs. The Vc. part has a bass line with some slurs. The Solo part has a melodic line with some slurs.



50

Pan.
Perc.
E. Gtr.
E. Gtr.
S. Bass
Syn. Str.
Vla.
Vc.
Solo

Detailed description: This block contains the musical score for measures 50 through 53. The score is arranged in a standard orchestral layout with ten staves. From top to bottom, the staves are: Pan. (Percussion), Perc. (Percussion), E. Gtr. (Electric Guitar), E. Gtr. (Electric Guitar), S. Bass (Soprano Bass), Syn. Str. (Synthesizer Strings), Vla. (Viola), Vc. (Violoncello), and Solo (Soloist). The key signature is one flat (B-flat major/D minor). The time signature is 4/4. The Pan. part features a complex rhythmic pattern with various note values and rests. The Perc. part has a steady, rhythmic accompaniment. The E. Gtr. part plays a melodic line with various accidentals. The second E. Gtr. part is a guitar tablature staff with fret numbers and bar lines. The S. Bass part provides a bass line with eighth and quarter notes. The Syn. Str. part consists of block chords and arpeggiated figures. The Vla. part has a melodic line with some slurs. The Vc. part has a bass line with some slurs. The Solo part has a melodic line with some slurs.

♩ = 79,000381 ♩ = 78,000076 ♩ = 80,000000

54

Pan.

Perc.

E. Gtr.

A.

Cel.

S. Bass

Syn. Str.

Vla.

Vc.

Solo

♩ = 80,000000

♩ = 79,000381 ♩ = 78,000076

♩ = 77,000076



58

Perc.

E. Gtr.

E. Gtr.

Cel.

S. Bass

Syn. Str.

Vla.

Vc.

Solo

63 $\text{♩} = 79,000381$ $\text{♩} = 78,000076$ $\text{♩} = 80,000000$

Pan.

Perc.

E. Gtr.

E. Gtr.

A.

Cel.

S. Bass

Syn. Str.

FX 5

Vla. $\text{♩} = 79,000381$ $\text{♩} = 78,000076$ $\text{♩} = 80,000000$

Vc.

Solo

66

Pan.

Perc.

E. Gtr.

E. Gtr.

T	1				
A	2	6	4	4	1
B	4	4	2	2	4

Cel.

S. Bass

Syn. Str.

FX 5

Vla.

Vc.

Solo

70

Pan.

Perc.

E. Gtr.

E. Gtr.

Cel.

S. Bass

Syn. Str.

FX 5

Vla.

Vc.

Solo

T 1
A 2
B 4

4 4 2 4 4



74

$\text{♩} = 78,0007600351$ $\text{♩} = 74,000700290$

Pan.

Perc.

E. Gtr.

S. Bass

Syn. Str.

Vla.

Vc.

Solo

6

$\text{♩} = 76,000351$ $\text{♩} = 72,000290$
 $\text{♩} = 78,000076$ $\text{♩} = 74,000076$

76 $\text{♩} = 80,000000$ $\text{♩} = 68,000229$ $\text{♩} = 64,000000$ $\text{♩} = 62,000126$ $\text{♩} = 40,000000$

Pan.

Perc.

E. Gtr.

A.

S. Bass

Syn. Str.

Vla. $\text{♩} = 70,000237$ $\text{♩} = 80,000000$ $\text{♩} = 66,000069$ $\text{♩} = 64,000000$ $\text{♩} = 55,000458$ $\text{♩} = 40,000000$
 $\text{♩} = 68,000229$ $\text{♩} = 62,000126$

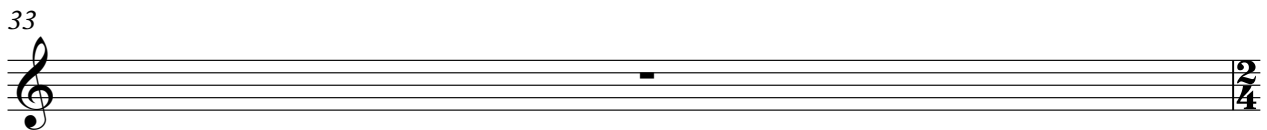
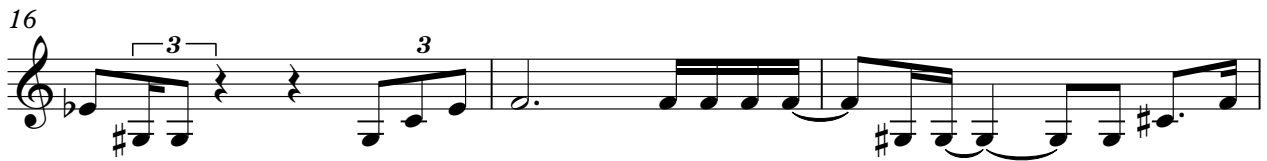
Vc.

Solo

Diana & The Supremes Ross - When You Tell Me That

Panpipes

♩ = 200,000000 ♩ = 80,000000
0261TELL



34

38

42

46

49

52

$\text{♩} = 79,000,000$

56

$\text{♩} = 80,000,000$

$\text{♩} = 79,000,000$

6

65

69

73

$\text{♩} = 78,000,000$

$\text{♩} = 74,000,000$

Panpipes

77 ♪ = 80,000000 ♪ = 68,000000 ♪ = 46,000000 ♪ = 26

2

Cor Anglais

Diana & The Supremes Ross - When You Tell Me That

♩ = 200,000000 ♪ = 80,000000

6

24

42

73

80

Diana & The Supremes Ross - When You Tell Me That

Percussion

♩ = 200,000000 ♪ = 80,000000

6

8

18

21

24

28

32

34

38

V.S.

2

Percussion

42

3

45

49

52

$\text{♩} = 79,000381$ $\text{♩} = 78,000706$ $\text{♩} = 80,000000$

55

58

62

$\text{♩} = 79,000381$ $\text{♩} = 78,000076$

$\text{♩} = 80,000000$

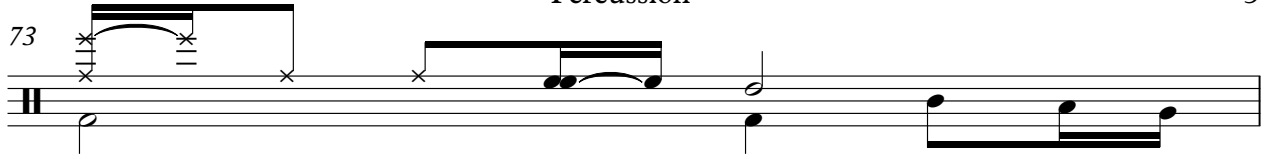
64

67

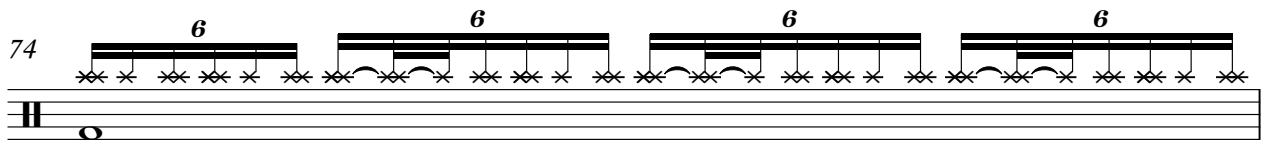
70

Percussion

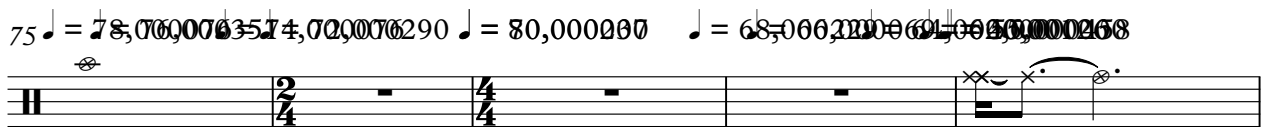
73



74



75



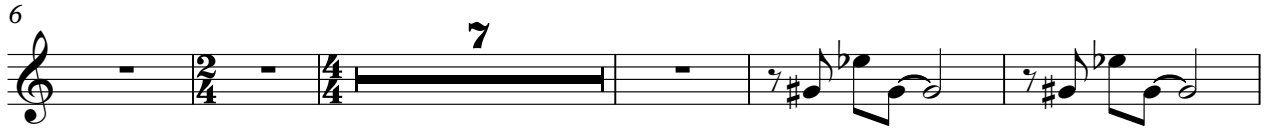
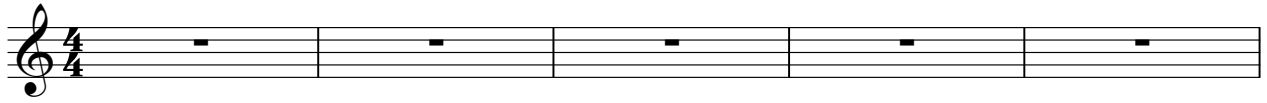
80



Electric Guitar

Diana & The Supremes Ross - When You Tell Me That

♩ = 200,000000 ♩ = 80,000000



V.S.

2

Electric Guitar

50

797800600760 797800607

3 7

64 = 80,000000 786000000290 = 80,000280 = 68600000004580000

9 2

8

80

2

♩ = 200,000000 ♪ = 80,000000

6

15

24

9

7

42

12

3

61

3

3

65

2

3

73

2

80

2

Diana & The Supremes Ross - When You Tell Me That

7-string Electric Guitar

♩ = 200,000000 ♩ = 80,000000

E				
T				
B				
A				
B				
A				

6 15

T							
A							
B							

24 9 7

T							
A							
B							

42 9 ♩ = 79,80000000

T								
A								1
B								1
				2	6	2	4	4
				2	4	2	4	2
				0	6	0	2	2
								4

58 ♩ = 79,80000000

T								
A	2	6	1	3			4	1
B	2	4	1	3			2	1
	0	4	4	1	4	6	6	4
					4	6	2	
						6	2	

66

T	1				1	1		
A	2	6	4	4	1	2	6	4
B	4	4	4	2	4	4	4	4
			2	2			2	2

73 ♩ = 78,06000000 ♩ = 78,00000000 ♩ = 80,00000000 ♩ = 80,00000000 ♩ = 80,00000000 ♩ = 80,00000000

T	1							
A	1							
B	4							

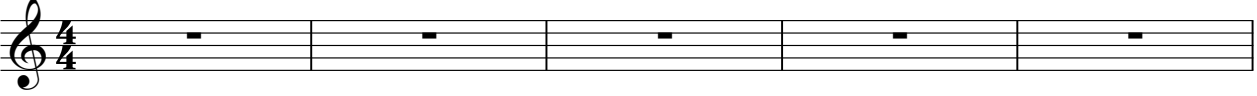
80 2

T								
A								
B								

Diana & The Supremes Ross - When You Tell Me That

Alto

♪ = 200,000000 ♪ = 80,000000



6



24




42



64



80



Diana & The Supremes Ross - When You Tell Me That

Celesta

♩ = 200,000000 ♩ = 80,000000

5

23

42

58

65

69

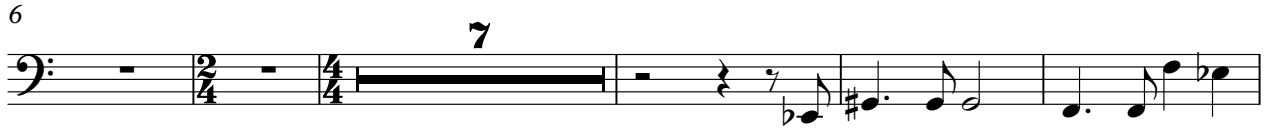
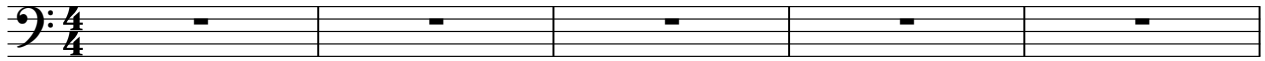
73

80

Diana & The Supremes Ross - When You Tell Me That

Synth Bass

♩ = 200,000000 ♩ = 80,000000



V.S.

Diana & The Supremes Ross - When You Tell Me That

Synth Strings

♩ = 200,000000 ♩ = 80,000000

6

14

23

31

37

42

49

57

65

V.S.

2

Synth Strings

♩ = 78,0000003514,0000290

72

77

♩ = 80,000000

♩ = 68,000229

♩ = 66,000069

♩ = 64,000000

♩ = 55,000000

♩ = 44,000000

80

2

FX 5 (Brightness)

Diana & The Supremes Ross - When You Tell Me That

♩ = 200,000000 ♩ = 80,000000

6 15

24 9 7

42 12 7

65 3 3

69 3

73 2

80 2

Diana & The Supremes Ross - When You Tell Me That

Viola

♩ = 200,000000 ♪ = 80,000000

6

18

23

28

33

42

48

♩ = 70,000000 ♪ = 28,000000

53

57

V.S.

2

62

7 9 7 8 9 0 3 0 0 7 0 0 0 0

Viola

67

71

75

7 8 0 1 6 0 0 6 3 5 1 0 7 0 2 9 0 7 0 0 0 0 2 0 7 6 8 0 0 2 0 4 5 0 0 5 0 0 0 4 5 8 0 0

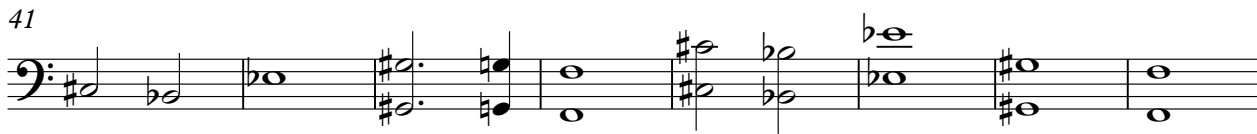
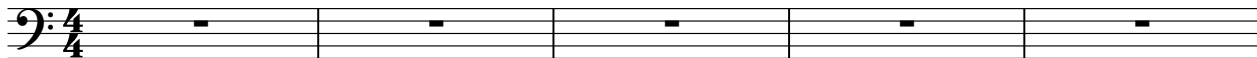
80

2

Diana & The Supremes Ross - When You Tell Me That

Violoncello

♩ = 200,000000 ♪ = 80,000000



V.S.

2

Violoncello

73

♪ = 78,30000000 ♪ = 80,000000 ♪ = 68,00000000 ♪ = 55,00000000

80

2

Diana & The Supremes Ross - When You Tell Me That

Solo

♩ = 200,000000 ♩ = 80,000000

4

6

10

14

19

23

28

33

38

V.S.

Detailed description: This is a guitar solo score for the song 'When You Tell Me That' by Diana Ross & The Supremes. The piece is in 4/4 time and begins with a tempo marking of 200,000,000 (likely a typo for 200 BPM) and a note value of 80,000,000 (likely a typo for 80 BPM). The score is written in treble clef and consists of ten staves of music. The first staff shows the beginning of the solo with a key signature of one sharp (F#) and a 4/4 time signature. The second staff starts at measure 4 and continues the melodic line. The third staff starts at measure 6 and includes a triplet of eighth notes. The fourth staff starts at measure 10 and continues the melodic development. The fifth staff starts at measure 14 and features a more complex rhythmic pattern. The sixth staff starts at measure 19 and continues the melodic line. The seventh staff starts at measure 23 and features a series of chords. The eighth staff starts at measure 28 and continues the melodic line. The ninth staff starts at measure 33 and features a more complex rhythmic pattern. The tenth staff starts at measure 38 and continues the melodic line. The score concludes with the initials 'V.S.' in the bottom right corner.

42



47



52

♩ = 79,680,000 = 80,00000



57



62

♩ = 79,078,880 = 80,00000



67



71



75

♩ = 78,060,000 = 78,000290 ♩ = 80,000280

♩ = 68,000,000 = 68,000268



80

2

