

Die Original Oberkrainer - Oktober Feste

♩ = 118,001060

TUBA

DRUMS

ACCORDION

SYN BASS 2

♩ = 118,001060

4

TUBA

DRUMS

ACCORDION

SYN BASS 2

TUBA

DRUMS

ACCORDION

SYN BASS 2

TUBA

DRUMS

ACCORDION

SYN BASS 2

7

TUBA

DRUMS

ACCORDION

SYN BASS 2

8

TUBA

DRUMS

ACCORDION

SYN BASS 2

9

TUBA

DRUMS

ACCORDION

SYN BASS 2

10

TUBA

DRUMS

ACCORDION

SYN BASS 2

12

TUBA

DRUMS

ACCORDION

SYN BASS 2

13

TUBA

DRUMS

ACCORDION

SYN BASS 2

14

TUBA

DRUMS

ACCORDION

SYN BASS 2

15

TUBA

DRUMS

ACCORDION

SYN BASS 2

This musical score block covers measures 15 and 16. It features four staves: Tuba (bass clef), Drums (drum clef), Accordion (bass clef), and Syn Bass 2 (bass clef). The Tuba part consists of quarter notes with stems pointing down. The Drums part shows a pattern of quarter notes with stems pointing down, with 'x' marks above some notes. The Accordion part is a complex arrangement of chords and single notes, primarily in the lower register. The Syn Bass 2 part consists of quarter notes with stems pointing down.

16

TUBA

DRUMS

ACCORDION

SYN BASS 2

This musical score block covers measures 16 and 17. It features four staves: Tuba (bass clef), Drums (drum clef), Accordion (treble and bass clefs), and Syn Bass 2 (bass clef). The Tuba part consists of quarter notes with stems pointing down. The Drums part shows a pattern of quarter notes with stems pointing down, with 'x' marks above some notes. The Accordion part is a complex arrangement of chords and single notes, with the right hand in the treble clef and the left hand in the bass clef. The Syn Bass 2 part consists of quarter notes with stems pointing down.

17

TUBA

DRUMS

ACCORDION

3

SYN BASS 2

18

TUBA

DRUMS

ACCORDION

SYN BASS 2

19

TUBA

DRUMS

ACCORDION

SYN BASS 2

20

TUBA

DRUMS

ACCORDION

SYN BASS 2

22

TUBA

DRUMS

ACCORDION

SYN BASS 2

23

TUBA

DRUMS

ACCORDION

SYN BASS 2

24

TUBA

DRUMS

ACCORDION

SYN BASS 2

25

TUBA

DRUMS

ACCORDION

SYN BASS 2

26

TUBA

DRUMS

ACCORDION

SYN BASS 2

27

TUBA

DRUMS

ACCORDION

SYN BASS 2

TUBA

DRUMS

ACCORDION

SYN BASS 2

TUBA

DRUMS

ACCORDION

SYN BASS 2

31

TUBA

DRUMS

ACCORDION

SYN BASS 2

32

TUBA

DRUMS

ACCORDION

SYN BASS 2

33

TUBA

DRUMS

ACCORDION

SYN BASS 2

34

TUBA

DRUMS

ACCORDION

SYN BASS 2

35

TUBA

DRUMS

ACCORDION

SYN BASS 2

36

TUBA

DRUMS

ACCORDION

SYN BASS 2

37

TUBA

DRUMS

ACCORDION

SYN BASS 2

38

TUBA

DRUMS

ACCORDION

SYN BASS 2

40

TUBA

DRUMS

ACCORDION

SYN BASS 2

41

TUBA

DRUMS

ACCORDION

SYN BASS 2

42

TUBA

DRUMS

ACCORDION

SYN BASS 2

43

TUBA

DRUMS

ACCORDION

SYN BASS 2

44

TUBA

DRUMS

ACCORDION

SYN BASS 2

45

TUBA

DRUMS

ACCORDION

SYN BASS 2

46

TUBA

DRUMS

ACCORDION

SYN BASS 2

47

TUBA

DRUMS

ACCORDION

SYN BASS 2

48

TUBA

DRUMS

ACCORDION

SYN BASS 2

49

TUBA

DRUMS

ACCORDION

SYN BASS 2

50

TUBA

DRUMS

ACCORDION

SYN BASS 2

51

TUBA

DRUMS

ACCORDION

SYN BASS 2

52

TUBA

DRUMS

ACCORDION

SYN BASS 2

53

TUBA

DRUMS

ACCORDION

SYN BASS 2

TUBA

DRUMS

ACCORDION

SYN BASS 2

TUBA

DRUMS

ACCORDION

SYN BASS 2

56

TUBA

DRUMS

ACCORDION

SYN BASS 2

57

TUBA

DRUMS

ACCORDION

SYN BASS 2

TUBA

DRUMS

ACCORDION

SYN BASS 2

TUBA

DRUMS

ACCORDION

SYN BASS 2

60

TUBA

DRUMS

ACCORDION

SYN BASS 2

The image shows a musical score for four instruments: Tuba, Drums, Accordion, and Syn Bass 2. The score is divided into four staves. The Tuba staff is in bass clef and contains a melodic line with notes G2, A2, and B2, each followed by a quarter rest. The Drums staff is in common time and features a rhythmic pattern of eighth notes and quarter notes with 'x' marks above them, indicating cymbal hits. The Accordion staff is in treble and bass clefs and contains a complex melodic and harmonic line with many beamed notes and accidentals. The Syn Bass 2 staff is in bass clef and contains a melodic line with notes G2, A2, and B2, each followed by a quarter rest. The score is set in a key with one sharp (F#) and a 4/4 time signature.

Die Original Oberkrainer - Oktober Feste

TUBA

♩ = 118,001060



5



8



11



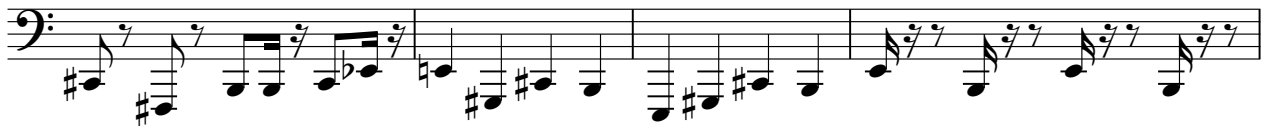
14



17



20



24



26



28



V.S.

TUBA

59

The musical notation for measure 59 is written on a single staff with a bass clef. It consists of three measures. The first measure contains four eighth notes with stems pointing up, with a quarter rest following. The second measure contains four eighth notes with stems pointing up, with a quarter rest following. The third measure contains a whole note. A large number '2' is positioned above the third measure, likely indicating a second ending or a specific articulation.

DRUMS

Die Original Oberkrainer - Oktober Feste

♩ = 118,001060

6

10

14

18

21

24

28

31

34

Detailed description: This image shows a drum score for the piece 'Die Original Oberkrainer - Oktober Feste'. The score is written on ten staves, each representing a four-measure phrase. The tempo is marked as ♩ = 118,001060. The time signature is 4/4. The notation includes various drum symbols: 'x' for cymbals, 'o' for snare, and '●' for bass drum. The first staff starts with a double bar line and a 4/4 time signature. The notation is complex, featuring many triplets and specific rhythmic patterns. The staves are numbered 6, 10, 14, 18, 21, 24, 28, 31, and 34, indicating the measure numbers. The score ends with a double bar line on the final staff.

V.S.

38

Musical notation for drum set, measures 38-40. The notation is on a single staff with a double bar line on the left. It shows a bass drum pattern (indicated by 'x' marks) and a snare drum pattern (indicated by note heads). The bass drum plays quarter notes and eighth notes, while the snare drum plays quarter notes and eighth notes.

41

Musical notation for drum set, measures 41-43. The notation is on a single staff with a double bar line on the left. It shows a snare drum pattern (indicated by note heads) and a bass drum pattern (indicated by 'x' marks). The snare drum plays eighth notes and sixteenth notes, while the bass drum plays quarter notes and eighth notes.

44

Musical notation for drum set, measures 44-46. The notation is on a single staff with a double bar line on the left. It shows a snare drum pattern (indicated by note heads) and a bass drum pattern (indicated by 'x' marks). The snare drum plays eighth notes and sixteenth notes, while the bass drum plays quarter notes and eighth notes.

47

Musical notation for drum set, measures 47-49. The notation is on a single staff with a double bar line on the left. It shows a snare drum pattern (indicated by note heads) and a bass drum pattern (indicated by 'x' marks). The snare drum plays eighth notes and sixteenth notes, while the bass drum plays quarter notes and eighth notes.

50

Musical notation for drum set, measures 50-52. The notation is on a single staff with a double bar line on the left. It shows a snare drum pattern (indicated by note heads) and a bass drum pattern (indicated by 'x' marks). The snare drum plays eighth notes and sixteenth notes, while the bass drum plays quarter notes and eighth notes.

52

Musical notation for drum set, measures 52-54. The notation is on a single staff with a double bar line on the left. It shows a snare drum pattern (indicated by note heads) and a bass drum pattern (indicated by 'x' marks). The snare drum plays eighth notes and sixteenth notes, while the bass drum plays quarter notes and eighth notes.

54

Musical notation for drum set, measures 54-56. The notation is on a single staff with a double bar line on the left. It shows a snare drum pattern (indicated by note heads) and a bass drum pattern (indicated by 'x' marks). The snare drum plays eighth notes and sixteenth notes, while the bass drum plays quarter notes and eighth notes.

56

Musical notation for drum set, measures 56-58. The notation is on a single staff with a double bar line on the left. It shows a snare drum pattern (indicated by note heads) and a bass drum pattern (indicated by 'x' marks). The snare drum plays eighth notes and sixteenth notes, while the bass drum plays quarter notes and eighth notes.

58

Musical notation for drum set, measures 58-60. The notation is on a single staff with a double bar line on the left. It shows a snare drum pattern (indicated by note heads) and a bass drum pattern (indicated by 'x' marks). The snare drum plays eighth notes and sixteenth notes, while the bass drum plays quarter notes and eighth notes.

60

Musical notation for drum set, measures 60-62. The notation is on a single staff with a double bar line on the left. It shows a snare drum pattern (indicated by note heads) and a bass drum pattern (indicated by 'x' marks). The snare drum plays eighth notes and sixteenth notes, while the bass drum plays quarter notes and eighth notes. A triplet of eighth notes is marked with a '3' and a bracket. The piece ends with a double bar line and a '2' indicating a final double bar line.

ACCORDION

Die Original Oberkrainer - Oktober Feste

♩ = 118,001060

Measures 1-3 of the piece. The music is in 4/4 time. Measure 1 is a whole rest. Measure 2 is a whole rest. Measure 3 contains a triplet of eighth notes in the bass clef, followed by a quarter note, and then a triplet of eighth notes in the bass clef.

Measures 4-5. Measure 4 has a quarter rest in the treble clef and a quarter note in the bass clef. Measure 5 has a quarter rest in the treble clef and a quarter note in the bass clef.

Measures 6-7. Measure 6 has a quarter rest in the treble clef and a quarter note in the bass clef. Measure 7 has a quarter rest in the treble clef and a quarter note in the bass clef.

Measures 8-9. Measure 8 has a quarter rest in the treble clef and a quarter note in the bass clef. Measure 9 has a quarter rest in the treble clef and a quarter note in the bass clef.

Measures 10-12. Measure 10 has a quarter rest in the treble clef and a quarter note in the bass clef. Measure 11 has a quarter rest in the treble clef and a quarter note in the bass clef. Measure 12 has a quarter rest in the treble clef and a quarter note in the bass clef.

Measure 13. The bass clef contains a triplet of eighth notes, followed by a quarter note, and then a triplet of eighth notes.

V.S.

14

3

15

17

3

19

21

24

26

28

30

32

34

35

36

Measures 36 and 37 of the accordion score. Measure 36 features a complex melodic line in the treble clef with many beamed notes and rests, and a bass line with chords and single notes. Measure 37 continues the melodic pattern in the treble and has a more active bass line.

38

Measures 38 and 39. Measure 38 has a melodic line in the treble with some rests and a bass line with chords. Measure 39 features a more rhythmic treble line with many beamed notes and a bass line with chords.

40

Measures 40 and 41. Measure 40 has a treble line with many beamed notes and a bass line with chords. Measure 41 has a treble line with rests and a bass line with chords.

42

Measures 42 and 43. Measure 42 has a treble line with rests and a bass line with chords. Measure 43 has a treble line with many beamed notes and a bass line with chords.

43

Measure 43 (continued). This system shows only the treble clef staff, which contains a melodic line with many beamed notes and rests.

44

Measures 44 and 45. Measure 44 has a treble line with many beamed notes and a bass line with chords. Measure 45 has a treble line with rests and a bass line with chords.

46

Musical notation for measure 46, featuring a treble and bass staff with various notes and rests.

47

Musical notation for measure 47, featuring a treble and bass staff with various notes and rests.

49

Musical notation for measure 49, featuring a treble and bass staff with various notes and rests.

50

Musical notation for measure 50, featuring a treble and bass staff with various notes and rests.

52

Musical notation for measure 52, featuring a treble and bass staff with various notes and rests.

53

Musical notation for measure 53, featuring a treble and bass staff with various notes and rests.

V.S.

54

Musical notation for measures 54 and 55. The system consists of a treble clef staff and a bass clef staff. Measure 54 features a complex melody in the treble with many beamed eighth notes and chords, while the bass line has a simple accompaniment of quarter notes. Measure 55 continues the treble melody with similar rhythmic patterns and includes a key signature change to one flat.

56

Musical notation for measures 56 and 57. Measure 56 shows a melodic line in the treble with some rests, and a bass line with chords and eighth notes. Measure 57 has a more active treble melody with beamed notes and a bass line with chords and eighth notes.

58

Musical notation for measures 58 and 59. Measure 58 continues the melodic development in the treble and the accompaniment in the bass. Measure 59 features a treble melody with some rests and a bass line with chords and eighth notes.

60

Musical notation for measures 60 and 61. Measure 60 shows a treble melody with rests and a bass line with chords and eighth notes. Measure 61 is a double bar line with a fermata, with the number '2' written above and below the staff, indicating a second ending.

♩ = 118,001060



5



8



11



14



17



20



24



27



30



33



36



39



42



45



48



51



53



56



59

