

Distel Sacha - Scandale Dans La Famille

00:00:04:29
2.1,00
untitled

♩ = 120,000000

drums

bass

bass

strings

♩ = 120,000000

The score for the first system includes drums, two bass lines, and strings. The drums part features a complex rhythmic pattern with many 'x' marks. The bass lines play a steady eighth-note pattern. The strings part has a melodic line with a long note and a slur.

5

Melodie

tuba

drums

guit

bass

bass

strings

Woh pa pa

The second system starts with a measure number '5'. It includes a melody line with lyrics 'Woh pa pa', a tuba part, drums, guitar, two bass lines, and strings. The melody line has a slur over the notes 'Woh pa pa'. The guitar part has a complex rhythmic pattern with many 'x' marks. The bass lines play a steady eighth-note pattern. The strings part has a melodic line with a long note and a slur.

8

Melodie

tuba

Quel malheur, quel grand malheur

drums

guit

bass

bass

Detailed description: This system covers measures 8 and 9. The Melodie staff (treble clef) has a whole rest in measure 8 and a half note in measure 9. The tuba staff (bass clef) has lyrics 'Quel malheur, quel grand malheur' and a melodic line. The guitar staff (treble clef) features a triplet of eighth notes in measure 9. The drums staff shows a consistent rhythmic pattern. The bass and another bass staff (both bass clef) provide harmonic support with quarter and eighth notes.

10

Melodie

tuba

pour moi, Woh pa

drums

guit

bass

bass

Detailed description: This system covers measures 10 and 11. The Melodie staff (treble clef) has a half note in measure 10 and a half note in measure 11. The tuba staff (bass clef) has lyrics 'pour moi, Woh pa' and a melodic line. The guitar staff (treble clef) features a triplet of eighth notes in measure 11. The drums staff shows a consistent rhythmic pattern. The bass and another bass staff (both bass clef) provide harmonic support with quarter and eighth notes.

12

Melodie

tuba

pa

Quel scan dale si mama sa

drums

guit

bass

bass

14

Melodie

tuba

vait 3a A ni dad tout la bas aux

drums

guit

bass

bass

16

Melodie

tuba

drums

guit

bass

bass

An tilles A Tri ni dad vi vait u ne

3

18

Melodie

tuba

drums

guit

bass

bass

fa mille Y'avait la ma ma et le pa pa et le grand

20

Melodie

tuba

drums

guit

bass

bass

fil s ao n'i

Qui a quarante ans n'ÿ tait toujours

22

Melodie

tuba

drums

guit

bass

bass

pas na n'i

Un jour il trou va la fille

24

Melodie

tuba

qu'il vou lan Il dit a son fr re je vou

drums

guit

bass

bass

26

Melodie

tuba

d'ais H pou ser H las mon gar z, h las

drums

guit

bass

bass

28

Melodie

tu n'peux pas Car cette fille est ta soeur et ta mire

tuba

drums

guit

bass

bass

30

Melodie

ne l'sait pas Wöh pa

tuba

drums

guit

bass

bass

32

Melodie

tuba

pa Quelmal heur, que grand mal

drums

guit

bass

bass

Detailed description: This system covers measures 32 and 33. The Melodie staff (treble clef) starts with a rest in measure 32, then plays a sequence of notes: G4, A4, B4, C5, D5, E5, F#5, G5. The tuba staff (bass clef) plays a sequence of notes: G2, A2, B2, C3, D3, E3, F#3, G3. The guitar staff (treble clef) features a complex rhythm with triplets and chords. The drums staff shows a consistent pattern of snare and bass drum hits. The two bass staves (bass clef) provide a steady accompaniment with notes like G2, A2, B2, C3, D3, E3, F#3, G3.

34

Melodie

tuba

heur pour moi Woh pa

drums

guit

bass

bass

Detailed description: This system covers measures 34 and 35. The Melodie staff (treble clef) starts with a rest in measure 34, then plays a sequence of notes: G4, A4, B4, C5, D5, E5, F#5, G5. The tuba staff (bass clef) plays a sequence of notes: G2, A2, B2, C3, D3, E3, F#3, G3. The guitar staff (treble clef) features a complex rhythm with triplets and chords. The drums staff shows a consistent pattern of snare and bass drum hits. The two bass staves (bass clef) provide a steady accompaniment with notes like G2, A2, B2, C3, D3, E3, F#3, G3.

36

Melodie

tuba

Quel scan dale si #naman

drums

guit

bass

bass

38

Melodie

tuba

sa-vait za Deux ans pas sient puis le gar zon

drums

guit

bass

bass

40

Melodie

tuba

un son Va trouver son père et lui dit plein

drums

guit

bass

bass

42

Melodie

tuba

d'es por La maresse d'ÿ cote veubien

drums

guit

bass

bass

44

Melodie

tuba

maï pou ser Mais le pau vre pïre prit un air ac

drums

guit

bass

bass

46

Melodie

tuba

ca qui Mon fils tu ne peux pas, tu ne peux

drums

guit

bass

bass

48

Melodie

tuba

pas faire sa Car cette fille est ta soeur et ta mere

drums

guit

bass

bass

50

Melodie

tuba

ne l'sait pas Wh pa pa

drums

guit

bass

bass

52

Melodie

tuba

Quel mal heur, qugrand malheur

drums

guit

bass

bass

54

Melodie

tuba

pour moi

Woh pa

6

drums

guit

bass

bass

56

Melodie

tuba

Quel scan dale si ma n sa

drums

guit

bass

bass

58

Melodie

tuba

vait 3a Dix ans a pris, il re vient tout

drums

guit

bass

bass

60

Melodie

tuba

mu Et dit son père de ri ne

drums

guit

bass

bass

62

Melodie

tuba

ce que j'ai vu Dans la plan : ta tion, on

drums

guit

bass

bass

64

Melodie

tuba

vi-ent d'embau cher Plus de cinquantfilles du vil lage

drums

guit

bass

bass

66

Melodie

tuba

d'a cō tū Нй las monayrēn fant, lesdieuxont

drums

guit

bass

bass

68

Melodie

contra toi Toutes des filles sont tes oeurs et tamire

tuba

drums

guit

bass

bass

70

Melodie

ne l'sait pas Wöh pa pa

tuba

drums

guit

bass

bass

72

Melodie

tuba

drums

guit

bass

bass

Quel mal heur, que grand maheur

74

Melodie

tuba

drums

guit

bass

bass

pour moi Weh pa pa

76

Melodie

tuba

Quel scan dale si maman

3

3

drums

guit

bass

bass

78

Melodie

tuba

sa vait 3a A bout de paience, il s'en fut

drums

guit

bass

bass

80

Melodie

tuba

drums

guit

bass

bass

й соеу рї Ra con ter a sa mire tou te la уї

82

Melodie

tuba

drums

guit

bass

bass

ri тї la mirese mit a rire et lui dit t'en

84

Melodie

fais pas Ton pere n'estas ton pere et ton

tuba

drums

guit

bass

bass

86

Melodie

pere ne l'sait pas Weh ma

tuba

drums

guit

bass

bass

88

Melodie

tuba

Quel bon heur, que grand bonheur

drums

guit

bass

bass

90

Melodie

tuba

pour moi Woh ma

drums

guit

bass

bass

92

Melodie

tuba

ma Quel scan dale si pa sa

drums

guit

bass

bass

94

Melodie

tuba

Woh woh woh woh ma

drums

guit

bass

bass

96

Melodie

tuba

ma

Quel bon heur, que grand bon

drums

guit

bass

bass

98

Melodie

tuba

hear pour moi

Weh ma ma

drums

guit

bass

bass

100

Melodie

tuba

Quel scan dale si # pa sa

drums

guit

bass

bass

102

Melodie

tuba

Woh woh woh woh

drums

guit

bass

bass

103

Melodie

tuba

ma ma

3

drums

guit

bass

bass

105

Melodie

tuba

bon heur, que bon heur pour moi wo

drums

guit

bass

bass

107

Melodie

tuba

drums

guit

bass

bass

Woh ma ma

3

3

7

Detailed description: This system contains measures 107 and 108. The Melodie staff (treble clef) features a vocal line with lyrics 'Woh ma ma' and a melodic line with a slur over the first two notes. The tuba staff (bass clef) has a bass line with a triplet of eighth notes in measure 108. The drums staff shows a consistent rhythmic pattern with 'x' marks for cymbals. The guitar staff (treble clef) has a complex accompaniment with triplets and slurs. The bass staff (bass clef) has a simple bass line. A second bass staff (bass clef) is also present with a similar bass line.

109

Melodie

tuba

drums

guit

bass

bass

Quel scan dale si ha pa sa vai 3a Woh woh woh

3

Detailed description: This system contains measures 109 and 110. The Melodie staff (treble clef) features a vocal line with lyrics 'Quel scan dale si ha pa sa vai 3a Woh woh woh' and a melodic line with a slur over the last three notes. The tuba staff (bass clef) has a bass line. The drums staff shows a consistent rhythmic pattern with 'x' marks for cymbals. The guitar staff (treble clef) has a complex accompaniment with triplets and slurs. The bass staff (bass clef) has a simple bass line. A second bass staff (bass clef) is also present with a similar bass line.

111

Melodie

wah ma ma Quel

tuba

drums

guit

bass

bass

strings

113

Melodie

bon heur, quel grand bon

drums

guit

bass

bass

strings

114

Melodie

heur pour moi wo woh

drums

guit

bass

bass

strings

115

Melodie

ma ma Quel

drums

guit

bass

bass

strings

117

Melodie

drums

guit

bass

bass

strings

scan dale si pa pa

3

118

Melodie

drums

guit

bass

bass

strings

sa vant 3a 3a Woh ma

120

Melodie

drums

guit

strings

ma

Quel bon heur, quel gran heur

122

Melodie

drums

guit

strings

pour mor woh ma ma

124

Melodie

drums

guit

strings

Quel scan dale si pa pa

Melodie

126

sa vai 3a

The melody staff is in treble clef. It begins with a rest, followed by a quarter note G4, a quarter note A4, a quarter note B4, and a quarter note C5. The lyrics 'sa vai 3a' are positioned below the notes. The staff ends with a double bar line.

drums

The drum staff uses a standard drum notation system with a double bar line. It features a series of rhythmic patterns including eighth and sixteenth notes, rests, and a final quarter note with a cross symbol.

guit

The guitar staff is in treble clef. It shows a sequence of chords and melodic lines, including a triplet of eighth notes and a final quarter note with a cross symbol.

strings

The string staff is in bass clef. It features a triplet of eighth notes in the first measure, followed by a quarter note and a final quarter note with a cross symbol.

Distel Sacha - Scandale Dans La Famille

Melodie

♩ = 120,000000

4

Woh pa pa

8

Quel mal heur, quand le heur pour moi Woh pa

12

pa Quel scan dale simman sa vait za A Tri ni dad tout labaux

16

An tilles A Tri ni dad vi vait u ne fa mille Y'avait la ma

19

ma et le pa pa et le grand fils ao nï Qui a quarantans n'ÿtait toujours

22

pas mariÿ Un jour il trouva la fille qu'il voulait Il dit ason pri rejevou

26

drais l'ÿ pou ser Hÿ las mongar zon, hÿ las tu n'peupas Car

29

cette fille est ta oeuret ta mire ne sait pas Woh pa pa

33


Quel mal heur, quand mal heur pour moi Woh pa pa Quel

37

scan dale simman sa vait za Deux ans pas sirent puis e gazon un soir Va V.S.


41

 troue sorire et lui d'plein d'es poir La mressi cole veubien m'pouser Maisle

45

 paupre prit un airac ca bli Mon filstunpeux pas,tunpeux pasira Car

49

 cette fillest tsoeuret tnaire nd'sait pas Woh pa pa Quel


53

 mal heur, qugrandieur pour moi Woh pa pa Quel

57

 scan dale si mamansa vait за Dix ans a pris, il revintout

60

 й mu Et dit a sorire de vi ne cequ'aivu Dans lplantation, on

64

 vient d'enbaucher Plus de ciquanfilles du vil lage d'a cф tй Нй

67

 lasnpauren fant, lesdieusont contre toi Toutes ces fillesttesoeurs et tnaire

70

 ne l'sait pas Woh pa pa Quel

73

 mal heur, qugrandieur pour moi Woh pa pa Quel

77


 scan dale si manan savait za A boude piance, ils'efut йкоеуї Racon

81


 ter a samitoute la vї ri tї La mїscemita rire et luidit'en fais pas Ton

85


 pїnc'eston pїre et ton pїre d'sait pas Woh ma ma Quel

89


 bon heur, quand bon heur pour moi Woh ma ma Quel

93


 scan dale si pa pa sa vait za Wohwohwoh ma ma

97



 Qubbn heur, quand bon heur pour moi Woh ma ma Quel

101



 scan dale si pa pasa vait za Wohwohwoh ma ma

104


 Quel bon heur, quand bon heur pour moi Wo woh ma

108


 ma Quel dan dale si pa pa sa vait za Woh wohwoh ma

112


 ma Quel bon heur, quand bon V.S.

114

3

3

heur poumoi Wo woh ma ma Quel

117

scan dale si papa savait za Woh ma ma

121

Quel on heur, quel grand heur pour moi Wo woh ma ma

124

3

Quel scan dale si pa pa savait za

Distel Sacha - Scandale Dans La Famille

tuba

♩ = 120,000000
6

11

15

19

23

27

32

36

40

44

V.S.

tuba

48

54

59

63

68

74

78

85

90

95

101 tuba 3

106

110 16

Distel Sacha - Scandale Dans La Famille

drums

♩ = 120,000000

5

9

13

17

21

25

29

33

37

V.S.

40

44

47

50

53

57

60

64

67

70

74

77

81

85

88

91

94

97

100

103

V.S.

106

109

113

116

119

122

125

Distel Sacha - Scandale Dans La Famille

guit

♩ = 120,000000

6

9

12

15

18

21

24

27

31

34

V.S.

37

40

43

46

49

52

54

56

59

62

This image shows a page of guitar sheet music, numbered 2, for a piece titled "guit". The music is written in a single system with a treble clef and a key signature of one sharp (F#). The piece consists of 62 measures, with measure numbers 37, 40, 43, 46, 49, 52, 54, 56, 59, and 62 explicitly labeled. The notation includes a variety of rhythmic patterns, such as eighth and sixteenth notes, and complex chordal textures with many accidentals. A triplet of eighth notes is marked with a bracket and the number "3" at measure 54. The music is presented in a clean, black-and-white format.

65

68

72

75

78

81

84

87

90

93

This musical score for guitar spans measures 96 to 118. It is written in a single system with a treble clef and a key signature of one sharp (F#). The music is characterized by a complex, driving rhythmic pattern, primarily consisting of eighth and sixteenth notes, often beamed together in groups. A prominent feature is the use of triplets, indicated by a '3' over a bracketed group of notes. The score includes various articulations such as slurs and accents. The notation is dense, with many notes beamed together, suggesting a fast and intricate piece. The measures are numbered at the beginning of each line: 96, 99, 102, 104, 106, 108, 110, 112, 115, and 118.

121

Musical notation for guitar, measures 121-123. The notation includes a treble clef, a key signature of one sharp (F#), and a 3/4 time signature. The music consists of a series of chords and melodic lines, with a triplet of eighth notes in the final measure of this system.

124

Musical notation for guitar, measures 124-125. The notation continues the rhythmic and harmonic patterns from the previous system, featuring similar chordal structures and melodic fragments.

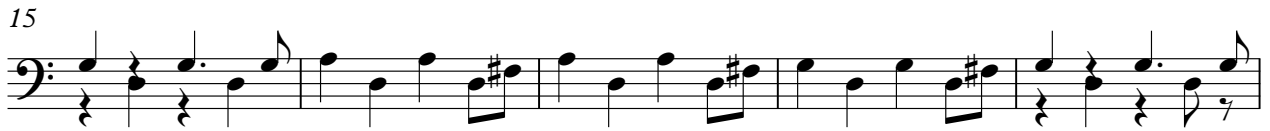
126

Musical notation for guitar, measures 126-127. The notation includes a treble clef, a key signature of one sharp (F#), and a 3/4 time signature. The music concludes with a double bar line.

Distel Sacha - Scandale Dans La Famille

bass

♩ = 120,000000



V.S.

50



55



60



65



70



74



79



84



89



94



99



104



109



114



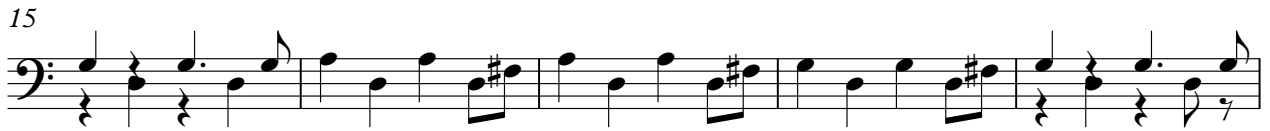
117



Distel Sacha - Scandale Dans La Famille

bass

♩ = 120,000000



V.S.

50



55



60



65



70



74



79



84



89



94



Distel Sacha - Scandale Dans La Famille

strings

♩ = 120,000000
2



8

103



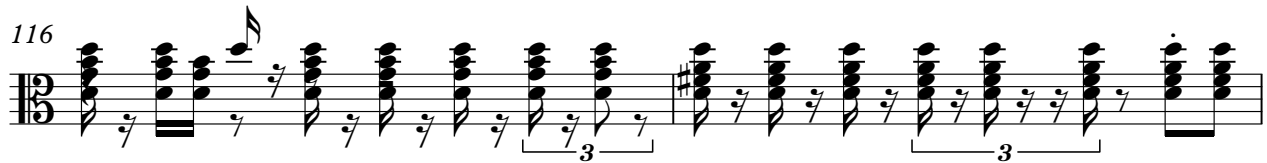
112



114



116



118



122



125

