

# Diversen Kerst Muziek Traditional - Holy Night 1

♩ = 92,020309

PRG.CHANGE

OBOE

BASSOON

FR.HORN

TROMBONE

TUBA

DRUMS

HARP

ACOU BASS

CHOIR AAHS

CHURCH ORG

SLOWSTRING

FANTASIA

♩ = 92,020309

VIOLIN

♩ = 92,020309

STRINGS

5

OBOE

HARP

ACOU BASS



8

OBOE

HARP

ACOU BASS



12

OBOE

HARP

ACOU BASS



15

OBOE

BASSOON

HARP

ACOU BASS

VIOLIN

18

OBOE

BASSOON

HARP

ACOU BASS

VIOLIN

Detailed description: This system contains five staves. The Oboe staff (treble clef) has a melodic line starting on a whole note G4, followed by eighth notes. The Bassoon staff (bass clef) has a melodic line starting on a whole note G3, followed by eighth notes. The Harp staff (treble clef) features a complex arpeggiated accompaniment with many beamed notes. The Acoustic Bass staff (bass clef) has a simple bass line with eighth notes. The Violin staff (treble clef) has a simple melodic line with eighth notes.



22

PRG.CHANGE

OBOE

BASSOON

HARP

ACOU BASS

SLOWSTRING

VIOLIN

Detailed description: This system contains seven staves. The PRG.CHANGE staff (treble clef) has a melodic line starting on a whole note G4, followed by eighth notes. The Oboe staff (treble clef) has a melodic line starting on a whole note G4, followed by eighth notes. The Bassoon staff (bass clef) has a melodic line starting on a whole note G3, followed by eighth notes. The Harp staff (treble clef) features a complex arpeggiated accompaniment with many beamed notes. The Acoustic Bass staff (bass clef) has a simple bass line with eighth notes. The Slow String staff (treble clef) has a simple melodic line with eighth notes. The Violin staff (treble clef) has a simple melodic line with eighth notes.

25

PRG.CHANGE

OBOE

BASSOON

HARP

ACOU BASS

SLOWSTRING



28

PRG.CHANGE

OBOE

BASSOON

HARP

ACOU BASS

SLOWSTRING

31

PRG.CHANGE

OBOE

BASSOON

FR.HORN

TUBA

HARP

ACOU BASS

SLOWSTRING

STRINGS



35

BASSOON

FR.HORN

TUBA

HARP

ACOU BASS

SLOWSTRING

STRINGS

40

BASSOON

FR.HORN

TUBA

ACOU BASS

SLOWSTRING



45

BASSOON

FR.HORN

TUBA

ACOU BASS

SLOWSTRING



49

BASSOON

FR.HORN

TUBA

ACOU BASS

SLOWSTRING

80,960362 = 82,081521 = 82,94

53 ~~53~~ 88 ♩ = 92,020309

PRG.CHANGE

BASSOON

FR.HORN

TUBA

DRUMS

HARP

ACOU BASS

SLOWSTRING

STRINGS

7389508330  
 ♩ = 60,000308  
 ♩ = 74,090538 ♩ = 80,130348  
 ♩ = 92,020309



57

PRG.CHANGE

TUBA

DRUMS

HARP

ACOU BASS

SLOWSTRING

STRINGS

61

PRG.CHANGE

DRUMS

HARP

ACOU BASS

SLOWSTRING

STRINGS



65

PRG.CHANGE

DRUMS

HARP

ACOU BASS

SLOWSTRING

STRINGS



70

PRG.CHANGE

FR.HORN

DRUMS

HARP

ACOU BASS

SLOWSTRING

STRINGS



74

PRG.CHANGE

BASSOON

FR.HORN

DRUMS

HARP

ACOU BASS

SLOWSTRING

FANTASIA

VIOLIN

STRINGS

78

BASSOON

DRUMS

HARP

ACOU BASS

SLOWSTRING

FANTASIA

VIOLIN



81

PRG.CHANGE

BASSOON

DRUMS

HARP

ACOU BASS

CHURCH ORG

FANTASIA

VIOLIN

84

PRG.CHANGE

BASSOON

FR.HORN

DRUMS

HARP

ACOU BASS

CHURCH ORG



87

PRG.CHANGE

BASSOON

FR.HORN

DRUMS

HARP

ACOU BASS

CHURCH ORG

90

PRG.CHANGE

BASSOON

FR.HORN

DRUMS

HARP

ACOU BASS

CHURCH ORG

95

PRG.CHANGE

FR.HORN

DRUMS

ACOU BASS

CHURCH ORG

100

PRG.CHANGE

DRUMS

ACOU BASS

CHURCH ORG

105

PRG.CHANGE

BASSOON

FR.HORN

DRUMS

HARP

ACOU BASS

CHOIR AAHS

CHURCH ORG

SLOWSTRING

110

BASSOON

FR.HORN

DRUMS

HARP

ACOU BASS

CHOIR AAHS

CHURCH ORG

SLOWSTRING



114

PRG.CHANGE

BASSOON

FR.HORN

HARP

ACOU BASS

CHOIR AAHS

CHURCH ORG

SLOWSTRING

119

BASSOON

FR.HORN

ACOU BASS

CHOIR AAHS

CHURCH ORG

SLOWSTRING



125

PRG.CHANGE

BASSOON

FR.HORN

ACOU BASS

CHOIR AAHS

CHURCH ORG

SLOWSTRING

$\text{♩} = 50,020008 = 114,891907 \text{ } \text{♩} = 143,000027$

129 ♯ = 92,020309 ♯ = 55,040318 ♯ = 146,302216 ♯ = 92,020309

PRG.CHANGE

BASSOON

FR.HORN

TROMBONE

ACOU BASS

SLOWSTRING



132 ♯ = 85,990685 ♯ = 71,810707 ♯ = 64,010239 ♯ = 52,820156 ♯ = 60,100368 ♯ = 82,060368

PRG.CHANGE

FR.HORN

HARP

ACOU BASS

SLOWSTRING

STRINGS



136  $\text{♩} = 92,020309$

PRG.CHANGE

OBOE

BASSOON

FR.HORN

TROMBONE

TUBA

HARP

ACOU BASS

CHOIR AAHS

CHURCH ORG

SLOWSTRING

FANTASIA

$\text{♩} = 92,020309$

VIOLIN

$\text{♩} = 92,020309$

STRINGS

PRG.CHANGE

Diversen Kerst Muziek Traditional - Holy Night 1

♩ = 92,020309

27

32

17

30309

2

57

63

70

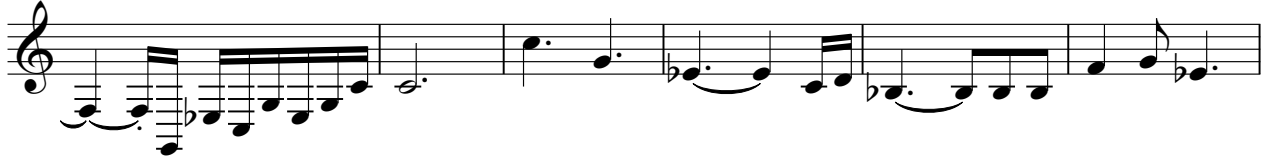
74

6

83



89



95



101



108



♩ = 50,024,0881907 ♩ = 44,531000927

129



♩ = 92,025,04031846,302216

♩ = 92,025,04031846,302216

133



♩ = 71,810707 ♩ = 64,51,8209156 ♩ = 60,180,360257 ♩ = 92,020309

OBOE

Diversen Kerst Muziek Traditional - Holy Night 1

♩ = 92,020309

9

16

23

30

17

54

♩ = 92,020309

73

♩ = 50,020489 ♩ = 90,07445 ♩ = 100,0107309 ♩ = 55,1040308216

131

♩ = 92,020309 ♩ = 71,810740 ♩ = 52,98201500368 ♩ = 92,000269

5 2

BASSOON

Diversen Kerst Muziek Traditional - Holy Night 1

♩ = 92,020309

14

20

29

2

40

49

♩ = 92,020309

56

20

84

90

16

108



115

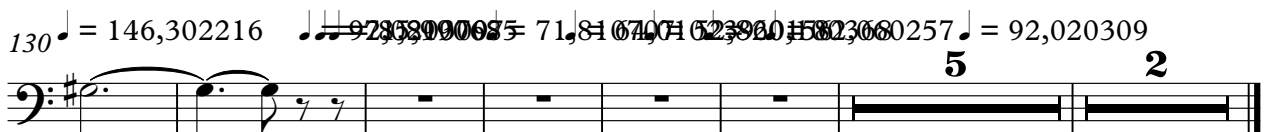


123

♩ = 50, 020DD8, 891 102, 546500 107 250, 2000



130



♩ = 146, 302216 ♩ = 92, 30300005 = 71, 816707162, 3001580, 368 5 2

Diversen Kerst Muziek Traditional - Holy Night 1

FR.HORN

♩ = 92,020309

29

37

46

55

15

76

8

93

9

110

119

3

127

♩ = 50,0200080 ♯9073,0100020 ♯055,04036,02216 ♩ = 92,080990685 ♩ = 71,810707

134

♩ = 64,0102,020 ♯560, ♯083,060 ♯592,020309

2

TROMBONE

Diversen Kerst Muziek Traditional - Holy Night 1

♩ = 92,020309

47

4/4 6/8

♩ = 92,020309

54

73

♩ = 56,12408819053,0092272055,940318 ♩ = 146,302216

4/4

131

♩ = 92,020309 ♩ = 71,81074,01022,820,160368 ♩ = 92,020369

5 2

4/4



# Diversen Kerst Muziek Traditional - Holy Night 1

## TUBA

♩ = 92,020309

**30**

36

44

♩ = 82,060257 ♩ = 64,010239  
♩ = 82,941322 ♩ = 72,950813 ♩ = 50,020008  
♩ = 82,060257 ♩ = 84,140854 ♩ = 62,980205 ♩ = 55,070018  
51 ♩ = 80,96150280 ♩ = 74,7322 ♩ = 73,980205 ♩ = 64,8 = 92,020309  
♩ = 50,020008  
♩ = 71,810707 ♩ = 51,000027

57 **70** ♩ = 50,020008 ♩ = 90744,5152020309 ♩ = 55,040308216

131 ♩ = 92,020309 ♩ = 71,810707 ♩ = 52,98201,100368 ♩ = 92,020309

**5** **2**

# Diversen Kerst Muziek Traditional - Holy Night 1

## DRUMS

♩ = 92,020309

**47**

54 ♩ = 92,020309

**2**

60

65

70

75

**4**

83

91

100

109

**16**

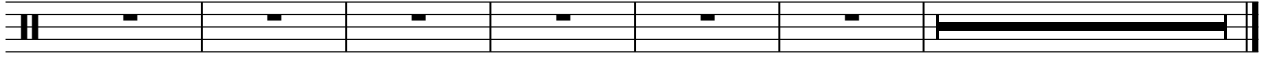
♩ = 50,020489 190744,5192,020309 95,04031

2

DRUMS

130 ♪ = 146,302216 ♪ = 92,800085 ♪ = 71,8107470 ♪ = 52,8200510368 ♪ = 32,0020257

7



Diversen Kerst Muziek Traditional - Holy Night 1

HARP

♩ = 92,020309

5

8

12

15

18

22

25

28

31

V.S.

36 **2** **10**

54 ♩ = 92,020309

60

65

71

76

79

82

86

90 **16**

109 HARP 3

113 11 ♩ = 50,024,008 907

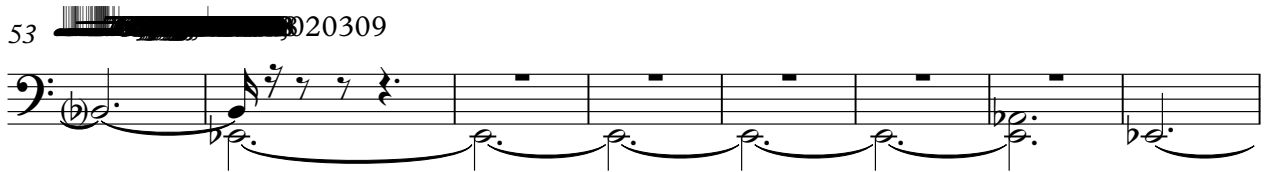
128 145540009279202304930216 9250900685 71,810707 6450182305660,820682

136 3 4 2 ♩ = 92,020309

# Diversen Kerst Muziek Traditional - Holy Night 1

ACOU BASS

♩ = 92,020309



69



80



91



100



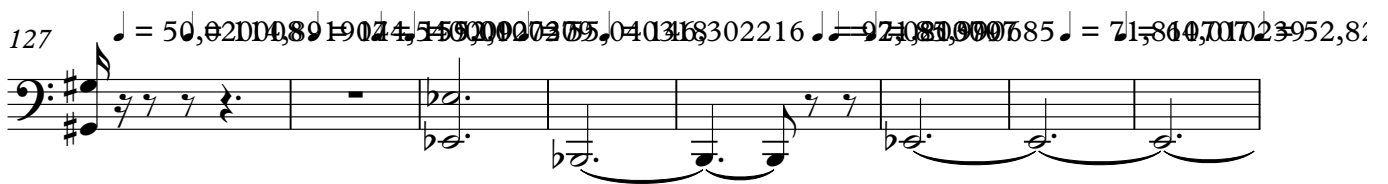
111



120



127



135



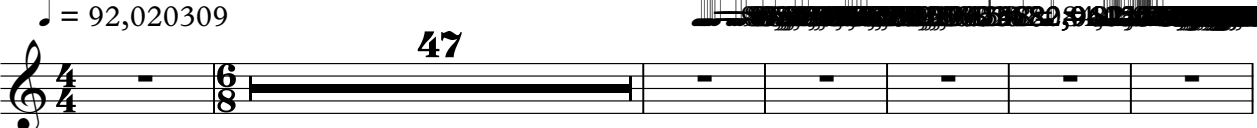


CHOIR AAHS

Diversen Kerst Muziek Traditional - Holy Night 1

♩ = 92,020309

47



A musical staff with a treble clef and a 4/4 time signature. It contains a single whole rest that spans the entire 47 measures of the system. Above the staff, the number '47' is written. To the left of the staff, there is a tempo marking '♩ = 92,020309'. There is some faint, illegible text at the top right of the page.

54

♩ = 92,020309



A musical staff with a treble clef and a 4/4 time signature. It contains a single whole rest that spans the entire 54 measures of the system. Above the staff, the number '54' is written. To the left of the staff, there is a tempo marking '♩ = 92,020309'. The staff continues with musical notation for the remainder of the system.

115



A musical staff with a treble clef and a 4/4 time signature. It contains musical notation for 115 measures, including various chords and melodic lines.

124

♩ = 50,020008 = 148,019000 = 272,020309 = 302,020309



A musical staff with a treble clef and a 4/4 time signature. It contains musical notation for 124 measures. Above the staff, there are four tempo markings: '♩ = 50,020008 = 148,019000 = 272,020309 = 302,020309'. The staff continues with musical notation for the remainder of the system.

131

♩ = 71,810640 = 229,820110 = 368,020369

5 2



A musical staff with a treble clef and a 4/4 time signature. It contains musical notation for 131 measures. Above the staff, there are three tempo markings: '♩ = 71,810640 = 229,820110 = 368,020369'. The staff continues with musical notation for the remainder of the system, ending with a double bar line. The numbers '5' and '2' are written below the staff.

CHURCH ORG

Diversen Kerst Muziek Traditional - Holy Night 1

♩ = 92,020309

47

54 ♩ = 92,020309

27

87

97

105

115

124 ♩ = 50,020008

131 ♩ = 71,810640 ♩ = 73,982015 ♩ = 82,080369

5 2

SLOWSTRING

Diversen Kerst Muziek Traditional - Holy Night 1

♩ = 92,020309

22

28

34

40

45

48

53

59

67

73

4 28

2

SLOWSTRING

108

116

123

129

133

136

FANTASIA

Diversen Kerst Muziek Traditional - Holy Night 1

♩ = 92,020309

47

6/8

54 ♩ = 92,020309

21

80

43

♩ = 50,024,008,90745,400

129 ♩ = 92,020309

5 2

VIOLIN

Diversen Kerst Muziek Traditional - Holy Night 1

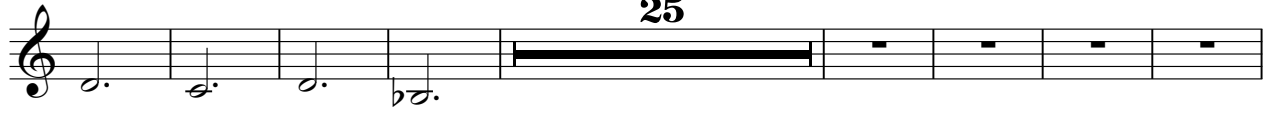
♩ = 92,020309



13

Detailed description: This block shows the first musical staff. It begins with a treble clef and a 4/4 time signature. A tempo marking '♩ = 92,020309' is placed above the staff. The staff contains a whole rest in the first measure, followed by a measure with a thick black bar and the number '13' above it. The staff continues with several measures of music, including eighth and sixteenth notes.

20



25

Detailed description: This block shows the second musical staff. It starts with a treble clef. The first measure has a whole rest, followed by a measure with a thick black bar and the number '25' above it. The staff continues with several measures of music, including eighth and sixteenth notes. There is a large blacked-out area at the end of the staff.


53



21

Detailed description: This block shows the third musical staff. It starts with a treble clef. The first measure has a whole rest, followed by a measure with a thick black bar and the number '21' above it. The staff continues with several measures of music, including eighth and sixteenth notes. There is a large blacked-out area at the beginning of the staff.

81



43

♩ = 50,0140881907144,54,000

Detailed description: This block shows the fourth musical staff. It starts with a treble clef. The first measure has a whole rest, followed by a measure with a thick black bar and the number '43' above it. The staff continues with several measures of music, including eighth and sixteenth notes. A tempo marking '♩ = 50,0140881907144,54,000' is placed above the staff.

129



5 2

Detailed description: This block shows the fifth musical staff. It starts with a treble clef. The first measure has a whole rest, followed by a measure with a thick black bar and the number '5' above it. The staff continues with several measures of music, including eighth and sixteenth notes. A tempo marking '♩ = 92,020309' is placed above the staff.

Diversen Kerst Muziek Traditional - Holy Night 1

STRINGS

♩ = 92,020309

32

37

9

52

♩ = 92,020309

58

63

68

73

♩ = 56,0100881907

51

128

♩ = 415,400072703095,6416,302216 ♩ = 718,1090985 ♩ = 71,810707

134

♩ = 64,010239 ♩ = 52,820156 ♩ = 60,100368 ♩ = 82,060257 ♩ = 92,020309

137

2

The image shows a musical score for strings, likely for a guitar or similar instrument. It consists of ten staves of music. The first staff starts with a treble clef, a 4/4 time signature, and a key signature of one flat (B-flat). The tempo is marked as ♩ = 92,020309. The first staff has a measure rest followed by a 32-measure rest, then a melodic line. The second staff starts at measure 37 and has a 9-measure rest. The third staff starts at measure 52 and has a tempo change to ♩ = 92,020309. The fourth staff starts at measure 58. The fifth staff starts at measure 63. The sixth staff starts at measure 68. The seventh staff starts at measure 73 and has a tempo change to ♩ = 56,0100881907 and a 51-measure rest. The eighth staff starts at measure 128 and has tempo changes to ♩ = 415,400072703095,6416,302216, ♩ = 718,1090985, and ♩ = 71,810707. The ninth staff starts at measure 134 and has tempo changes to ♩ = 64,010239, ♩ = 52,820156, ♩ = 60,100368, ♩ = 82,060257, and ♩ = 92,020309. The tenth staff starts at measure 137 and has a 2-measure rest. The score includes various musical notations such as rests, notes, stems, and beams.