

# Doc Watson - Devil's Dream

$\text{♩} = 136,001999$

This system of the musical score includes staves for Guitar, Mandolin, Banjo, and Bass. The music is in 4/4 time and D major. The guitar part features a melodic line with a sharp sign and a complex chordal texture. The mandolin part provides a rhythmic accompaniment with a similar melodic contour. The banjo part is highly technical, featuring a triplet and various fret numbers (0, 2, 4, 5, 6, 4, 5, 0, 5, 4, 5, 0, 2, 0). The bass part provides a simple harmonic foundation with a few notes.

4

This system continues the musical score for the second system. It includes staves for Guitar, Mandolin, Banjo, and Bass. The guitar part continues its melodic and harmonic development. The mandolin part maintains its rhythmic accompaniment. The banjo part features a complex sequence of fret numbers (5, 0, 0, 4, 4, 9, 7, 0, 4, 4, 9, 4, 4, 9, 4, 2, 4, 4, 0, 0, 2, 4) and a triplet. The bass part continues its simple harmonic support.

5

Guitar

Mandolin

Banjo

Bass

Detailed description: This system covers measures 5 through 8. The guitar part features a complex melodic line with many beamed eighth notes and slurs. The mandolin part consists of a steady eighth-note accompaniment. The banjo part includes a mix of eighth and sixteenth notes with various fret numbers (5, 4, 6, 0) indicated. The bass part provides a simple harmonic foundation with quarter notes.

6

Guitar

Mandolin

Banjo

Bass

Detailed description: This system covers measures 9 through 12. The guitar part continues with intricate melodic patterns. The mandolin part maintains its eighth-note accompaniment. The banjo part features a mix of eighth and sixteenth notes with fret numbers like 5, 2, 0, 4, 2, 0, 0, 0, 2, 6, 2, 0, 4, 7, 0. The bass part continues with a simple harmonic line.

7

Guitar

Mandolin

Banjo

Bass

Detailed description: This system covers measures 13 through 16. The guitar part features a melodic line with slurs and beamed notes. The mandolin part continues with eighth-note accompaniment. The banjo part includes eighth and sixteenth notes with fret numbers such as 4, 4, 5, 0, 4, 4, 5, 0, 4, 4, 5, 0, 5, 0, 5, 5. The bass part provides a consistent harmonic support.

8

Guitar  
Mandolin  
Banjo  
Bass

Detailed description: This system covers measures 8 and 9. The key signature has two sharps (F# and C#). The guitar part features a complex, multi-measure rest in measure 8, followed by a melodic line in measure 9. The mandolin part consists of a steady eighth-note accompaniment. The banjo part is a driving eighth-note pattern with various fretting (0, 4, 9, 2, 7, 4, 2, 4, 4, 2, 4, 4). The bass part provides a simple harmonic foundation with a few notes.

9

Guitar  
Mandolin  
Banjo  
Bass

Detailed description: This system covers measures 10 and 11. The guitar part continues with a melodic line, including a triplet in measure 11. The mandolin part maintains its eighth-note accompaniment. The banjo part continues with a similar eighth-note pattern, using fretting like 5, 4, 6, 0, 5, 6, 6, 5, 0, 5, 0, 4. The bass part remains simple.

10

Guitar  
Mandolin  
Banjo  
Bass

Detailed description: This system covers measures 12 and 13. The guitar part has a melodic line with a triplet in measure 13. The mandolin part continues with eighth-note accompaniment. The banjo part features a more varied eighth-note pattern with fretting like 5, 2, 0, 4, 2, 0, 2, 0, 6, 2, 0. The bass part includes a triplet in measure 13.

11

Guitar

Mandolin

Banjo

Bass

12

Guitar

Mandolin

Banjo

Bass

13

Guitar

Mandolin

Banjo

Bass

14

Guitar

Mandolin

Banjo

Bass

15

Guitar

Mandolin

Banjo

Bass

16

Guitar

Mandolin

Banjo

Bass

17

Guitar

Mandolin

Banjo

Bass

This system contains measures 17 through 20. The Guitar staff (treble clef) features a complex melodic line with many beamed eighth notes and some triplets. The Mandolin staff (treble clef) has a similar rhythmic pattern with many eighth notes and some triplets. The Banjo staff (treble clef) shows a mix of eighth and sixteenth notes with various fret numbers (0, 2, 4, 6, 7, 9) and some slurs. The Bass staff (bass clef) provides a simple harmonic accompaniment with quarter and eighth notes.

18

Guitar

Mandolin

Banjo

Bass

This system contains measures 21 through 24. The Guitar staff continues with a melodic line of beamed eighth notes and triplets. The Mandolin staff has a similar rhythmic pattern. The Banjo staff features a mix of eighth and sixteenth notes with fret numbers (0, 2, 4, 6, 9) and slurs. The Bass staff continues with a simple harmonic accompaniment.

19

Guitar

Mandolin

Banjo

Bass

This system contains measures 25 through 28. The Guitar staff continues with a melodic line of beamed eighth notes and triplets. The Mandolin staff has a similar rhythmic pattern. The Banjo staff features a mix of eighth and sixteenth notes with fret numbers (0, 2, 4, 5, 7, 9) and slurs. The Bass staff continues with a simple harmonic accompaniment.

20

Guitar

Mandolin

Banjo

Bass

21

Guitar

Mandolin

Banjo

Bass

22

Guitar

Mandolin

Banjo

Bass

23

Guitar

Mandolin

Banjo

Bass

24

Guitar

Mandolin

Banjo

Bass

25

Guitar

Mandolin

Banjo

Bass



26

Guitar

Mandolin

Banjo

Bass

27

Guitar

Mandolin

Banjo

Bass

28

Guitar

Mandolin

Banjo

Bass

29

Guitar

Mandolin

Banjo

Bass

30

Guitar

Mandolin

Banjo

Bass

31

Guitar

Mandolin

Banjo

Bass

3

32

Guitar

Mandolin

Banjo

Bass

33

Guitar

Mandolin

Banjo

Bass

34

Guitar

Mandolin

Banjo

Bass

35

Guitar

Mandolin

Banjo

Bass

36

Guitar

Mandolin

Banjo

Bass

37

Guitar

Mandolin

Banjo

Bass

38

Guitar

Mandolin

Banjo

Bass

39

Guitar

Mandolin

Banjo

Bass

40

Guitar

Mandolin

Banjo

Bass

41

This system contains measures 41 and 42. It features four staves: Guitar, Mandolin, Banjo, and Bass. The Guitar staff has a treble clef and a key signature of one sharp (F#). The Mandolin staff has a treble clef and a key signature of one sharp. The Banjo staff has a treble clef and a key signature of one sharp, with fret numbers 0, 2, 4, 5, 7, 10, and 12 indicated. The Bass staff has a bass clef and a key signature of one sharp. Measure 41 shows a guitar melody with a triplet of eighth notes, a mandolin accompaniment with eighth notes, a banjo accompaniment with eighth notes and fret numbers, and a bass line with quarter notes. Measure 42 continues the guitar melody with a triplet of eighth notes, the mandolin accompaniment, the banjo accompaniment with fret numbers, and the bass line.

42

This system contains measures 43 and 44. It features four staves: Guitar, Mandolin, Banjo, and Bass. The Guitar staff has a treble clef and a key signature of one sharp. The Mandolin staff has a treble clef and a key signature of one sharp. The Banjo staff has a treble clef and a key signature of one sharp, with fret numbers 0, 2, 4, 5, 6, 7, 9, and 10 indicated. The Bass staff has a bass clef and a key signature of one sharp. Measure 43 shows a guitar melody with eighth notes, a mandolin accompaniment with eighth notes, a banjo accompaniment with eighth notes and fret numbers, and a bass line with quarter notes. Measure 44 continues the guitar melody with eighth notes, the mandolin accompaniment, the banjo accompaniment with fret numbers, and the bass line.

43

This system contains measures 45 and 46. It features four staves: Guitar, Mandolin, Banjo, and Bass. The Guitar staff has a treble clef and a key signature of one sharp. The Mandolin staff has a treble clef and a key signature of one sharp. The Banjo staff has a treble clef and a key signature of one sharp, with fret numbers 0, 4, 7, 9, and 10 indicated. The Bass staff has a bass clef and a key signature of one sharp. Measure 45 shows a guitar melody with eighth notes, a mandolin accompaniment with eighth notes, a banjo accompaniment with eighth notes and fret numbers, and a bass line with quarter notes. Measure 46 continues the guitar melody with eighth notes, the mandolin accompaniment, the banjo accompaniment with fret numbers, and the bass line.

44

Guitar

Mandolin

Banjo

Bass

45

Guitar

Mandolin

Banjo

Bass

46

Guitar

Mandolin

Banjo

Bass

47

Guitar

Mandolin

Banjo

Bass

Detailed description: This system of music covers measures 47 through 51. The key signature has one sharp (F#). The guitar part (treble clef) features a complex melodic line with many slurs and ties. The mandolin part (treble clef) consists of chords and single notes, with a triplet of eighth notes in measure 48. The banjo part (treble clef) is primarily composed of chords with fingerings like 5-5 and 5-5-0. The bass part (bass clef) provides a simple harmonic foundation with notes on the 2nd, 3rd, and 4th strings.

48

Guitar

Mandolin

Banjo

Bass

Detailed description: This system of music covers measures 52 through 56. The guitar part (treble clef) continues with a melodic line, including a triplet of eighth notes in measure 53. The mandolin part (treble clef) features a rhythmic accompaniment with chords and single notes. The banjo part (treble clef) is highly technical, featuring many triplets and complex chordal structures with fingerings such as 2-2-2, 2-10-11, 9-10-9, 9-9-9, 5-5-3, 5-2-0-5, 2-0-2, and 4-4-4. The bass part (bass clef) continues with a simple harmonic line.



50

Guitar

Mandolin

Banjo

Bass

Fiddle

51

Guitar

Mandolin

Banjo

Bass

Fiddle

52

Guitar

Mandolin

Banjo

Bass

Fiddle

53

Guitar

Mandolin

Banjo

Bass

Fiddle

54

Guitar

Mandolin

Banjo

Bass

Fiddle

55

Guitar

Mandolin

Banjo

Bass

Fiddle

56

Guitar

Mandolin

Banjo

Bass

Fiddle

57

Guitar

Mandolin

Banjo

Bass

Fiddle

58 21

Guitar

Mandolin

Banjo

Bass

Fiddle

59

Guitar

Mandolin

Banjo

Bass

Fiddle

60

Guitar

Mandolin

Banjo

Bass

Fiddle

61

Guitar

Mandolin

Banjo

Bass

Fiddle

62

Guitar

Mandolin

Banjo

Bass

Fiddle

Detailed description: This system contains measures 62 through 65. The Guitar part is in treble clef with a key signature of one sharp (F#) and a 4/4 time signature. It features complex chordal textures with many beamed notes. The Mandolin part is also in treble clef and follows a similar melodic and harmonic path. The Banjo part is in treble clef and uses a mix of eighth and sixteenth notes with various fret numbers (0, 2, 4, 5, 7, 9) indicated below the staff. The Bass part is in bass clef and provides a simple harmonic foundation with quarter notes. The Fiddle part is in treble clef and plays a melodic line with eighth notes and rests.

63

Guitar

Mandolin

Banjo

Bass

Fiddle

Detailed description: This system contains measures 66 through 69. The Guitar part continues with complex chordal textures, including a triplet of eighth notes in measure 67 indicated by a '3' above the staff. The Mandolin part continues with its melodic and harmonic accompaniment. The Banjo part features a rhythmic pattern of eighth notes with fret numbers (3, 4, 5, 0) shown below. The Bass part continues with its simple harmonic support. The Fiddle part plays a melodic line with eighth notes and rests.

64

Guitar

Mandolin

Banjo

Bass

Fiddle

65

Guitar

Mandolin

Banjo

Bass

Fiddle



66

Guitar

Mandolin

Banjo

Bass

Fiddle

67

Guitar

Mandolin

Banjo

Bass

68

Guitar

Mandolin

Banjo

Bass

69

Guitar

Mandolin

Banjo

Bass

70

Guitar

Mandolin

Banjo

Bass

71

Guitar

Mandolin

Banjo

Bass

72

Guitar

Mandolin

Banjo

Bass

73

Guitar

Mandolin

Banjo

Bass

74

Guitar

Mandolin

Banjo

Bass

75

Guitar

Mandolin

Banjo

Bass

76

Guitar

Mandolin

Banjo

Bass

77

Guitar

Mandolin

Banjo

Bass

This system of music covers measures 77 through 80. The guitar part features a complex melodic line with many triplets and slurs. The mandolin part has a similar melodic structure with triplets. The banjo part is highly rhythmic, featuring a repeating pattern of notes with fingerings like 4-9-7 and 4-4-4-0. The bass part provides a simple harmonic foundation with a few notes per measure.

78

Guitar

Mandolin

Banjo

Bass

This system of music covers measures 81 through 84. The guitar part continues with intricate melodic patterns and slurs. The mandolin part has a similar melodic structure with triplets. The banjo part features a rhythmic pattern with fingerings like 0-2-0-0 and 4-2-0-4. The bass part continues with a simple harmonic foundation, including a triplet in the final measure.

79

Guitar

Mandolin

Banjo

Bass

This system of music covers measures 85 through 88. The guitar part features a melodic line with many slurs and triplets. The mandolin part has a similar melodic structure with triplets. The banjo part is highly rhythmic, featuring a repeating pattern of notes with fingerings like 4-2-0-4 and 4-4-4-0. The bass part provides a simple harmonic foundation with a few notes per measure.

80

Guitar

Mandolin

Banjo

Bass

81

Guitar

Mandolin

Banjo

Bass

82

Guitar

Mandolin

Banjo

Bass

83

Guitar

Mandolin

Banjo

Bass

Detailed description: This system contains measures 83, 84, and 85. The Guitar part features a complex melodic line with many accidentals and slurs. The Mandolin part has a rhythmic accompaniment with many slurs. The Banjo part includes a mix of fretted notes and open strings, with some double stops. The Bass part provides a simple harmonic foundation with a few notes.

84

Guitar

Mandolin

Banjo

Bass

Detailed description: This system continues measures 83, 84, and 85. The Guitar part has a prominent melodic line with a triplet in measure 84. The Mandolin part continues its rhythmic accompaniment. The Banjo part features a mix of fretted notes and open strings, with some double stops. The Bass part provides a simple harmonic foundation.

85

Guitar

Mandolin

Banjo

Bass

Detailed description: This system contains measures 85, 86, 87, and 88. The Guitar part has a melodic line in measure 85 followed by rests. The Mandolin part has a rhythmic accompaniment in measure 85 followed by rests. The Banjo part has a mix of fretted notes and open strings in measure 85 followed by rests. The Bass part has a simple harmonic foundation in measure 85 followed by rests.

# Doc Watson - Devil's Dream

Guitar

♩ = 136,001999

4

6

7

9

10

11

12

13

14

V.S.



2

Guitar

3

Musical score for guitar, measures 15-26. The score is written in treble clef with a key signature of two sharps (F# and C#). The music features complex chordal textures and melodic lines. Measure 15 starts with a treble clef and a key signature of two sharps. The notation includes various chord voicings, some with accidentals. Measure 16 continues the progression with similar chordal structures. Measure 17 shows a change in the bass line with a triplet of eighth notes. Measure 18 features a triplet of eighth notes in the bass line and a melodic line in the treble. Measure 19 has two triplet markings over eighth notes in the bass line. Measure 20 continues the melodic and harmonic development. Measure 21 shows a melodic line in the treble and a bass line with a triplet. Measure 22 features a melodic line in the treble and a bass line with a triplet. Measure 23 has a double bar line and a key signature change to one sharp (F#). The music continues with complex chordal textures. Measure 24 continues the progression. Measure 25 shows a melodic line in the treble and a bass line with a triplet. Measure 26 ends with a melodic line in the treble and a bass line with a triplet.

The image displays a guitar sheet music score for measures 27 through 37. The music is written on a single staff in treble clef with a key signature of one sharp (F#). The notation is highly complex, featuring dense chordal textures and intricate melodic lines. Several measures contain triplets, indicated by a bracket with the number '3' above the notes. Measure 28 has a triplet of eighth notes. Measure 29 has a triplet of eighth notes. Measure 30 has a triplet of eighth notes. Measure 31 has two triplets of eighth notes. Measure 32 has two triplets of eighth notes. Measure 33 has a triplet of eighth notes. Measure 34 has two triplets of eighth notes. Measure 35 has two triplets of eighth notes. Measure 37 has a triplet of eighth notes. The music is characterized by frequent use of accidentals (sharps and naturals) and a variety of note values (eighths, sixteens, and dotted notes). The overall style is highly technical and rhythmic.

39

41

43

45

47

49

51

53

54

55

This image shows a page of guitar sheet music, numbered 57 to 66. The music is written in a single system with a treble clef and a key signature of one sharp (F#). The notation includes various rhythmic values, chords, and melodic lines. Several measures contain triplets, indicated by a bracket with the number '3' above the notes. Measure 58 features a 7/8 time signature. Measure 62 includes a 3/8 time signature. The music is dense with chords and melodic movement, typical of a guitar solo or instrumental piece. The page concludes with the initials 'V.S.' in the bottom right corner.

V.S.

Musical score for guitar, measures 68-77. The score is written in treble clef with a key signature of one sharp (F#). It features complex chordal textures and melodic lines. Measure 68 starts with a series of chords, including a triad of F#, A, and C. Measures 69-77 contain various rhythmic patterns, including eighth and sixteenth notes, and several triplet markings (indicated by a '3' over a bracketed group of notes). The notation includes many beamed notes and complex chord voicings, typical of advanced guitar music.

78

79

81

82

84

# Doc Watson - Devil's Dream

Mandolin

♩ = 136,001999

2

5

8

11

14

16

19

21

22

23

6 3 3 3

V.S.

2  
24  
Mandolin

3  
6  
6  
3  
3  
3  
3  
3  
3  
3



Mandolin

A sheet music score for a mandolin, consisting of ten staves of music. The music is written in treble clef with a key signature of one sharp (F#). The score includes various musical notations such as chords, eighth notes, and triplets. Measure numbers 41, 44, 47, 50, 52, 55, 58, 61, 63, and 66 are indicated at the beginning of their respective staves. The music features a mix of rhythmic patterns and melodic lines, with some measures containing complex chordal textures.

Mandolin

69

71

73

75

77

79

82

84

# Doc Watson - Devil's Dream

Banjo

♩ = 136,001999

4

6

8

10

12

14

16

18

20

V.S.

Banjo

23

26

29

32

35

37

39

41

43

45

47

Musical notation for measure 47, featuring a treble and bass staff with various notes and fingerings.

49

Musical notation for measure 49, including a triplet of eighth notes in the treble staff.

51

Musical notation for measure 51, featuring a triplet of eighth notes in the treble staff.

53

Musical notation for measure 53, including a triplet of eighth notes in the treble staff.

55

Musical notation for measure 55, featuring a triplet of eighth notes in the treble staff.

57

Musical notation for measure 57, including a triplet of eighth notes in the treble staff.

59

Musical notation for measure 59, featuring a triplet of eighth notes in the treble staff.

61

Musical notation for measure 61, including a triplet of eighth notes in the treble staff.

63

Musical notation for measure 63, featuring a triplet of eighth notes in the treble staff.

65

Musical notation for measure 65, including a triplet of eighth notes in the treble staff.

V.S.

Banjo

67

Musical notation for measure 67, featuring a five-line staff with various notes and rests, including a triplet of eighth notes.

69

Musical notation for measure 69, featuring a five-line staff with various notes and rests, including a triplet of eighth notes.

71

Musical notation for measure 71, featuring a five-line staff with various notes and rests, including a triplet of eighth notes.

73

Musical notation for measure 73, featuring a five-line staff with various notes and rests, including a triplet of eighth notes.

75

Musical notation for measure 75, featuring a five-line staff with various notes and rests, including a triplet of eighth notes.

77

Musical notation for measure 77, featuring a five-line staff with various notes and rests, including a triplet of eighth notes.

79

Musical notation for measure 79, featuring a five-line staff with various notes and rests, including a triplet of eighth notes.

81

Musical notation for measure 81, featuring a five-line staff with various notes and rests, including a triplet of eighth notes.

83

Musical notation for measure 83, featuring a five-line staff with various notes and rests, including a triplet of eighth notes.

84

Musical notation for measure 84, featuring a five-line staff with various notes and rests, including a triplet of eighth notes and a double bar line.

# Doc Watson - Devil's Dream

Bass

♩ = 136,001999



V.S.

2

## Bass

61



67



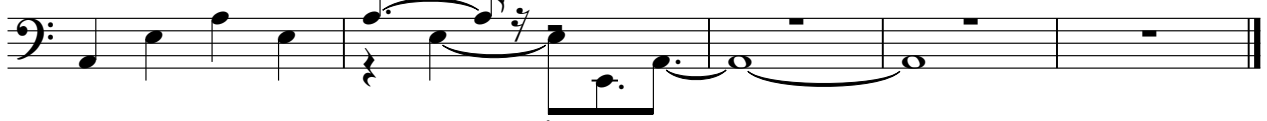
73



79



83





Fiddle

Doc Watson - Devil`s Dream

♩ = 136,001999

49

52

54

56

58

60

62

64

66

21