

# Dolly Parton - Here You Come Again

♩ = 104,000557

MELODY

DRUMS

JAZZ GTR

FRETLESS

SYNBASS 2

STRINGS

A.PIANO 1

DRUMS

A.PIANO 1

MELODY

DRUMS

A.PIANO 1

8

MELODY

DRUMS

A.PIANO 1

9

MELODY

DRUMS

A.PIANO 1

10

MELODY

DRUMS

A.PIANO 1

11

MELODY

DRUMS

A.PIANO 1

Detailed description: This image shows a musical score for measures 8 through 11. Each measure is represented by three staves: MELODY (top), DRUMS (middle), and A.PIANO 1 (bottom). Measure 8: The melody starts with a half note G4, followed by a quarter rest, a quarter note A4, and a quarter note B4. The drums have four 'x' marks on the staff, one under each of the four notes. The piano accompaniment consists of a series of chords, each with a slash through it, indicating a specific voicing. Measure 9: The melody begins with a triplet of eighth notes (G4, A4, B4), followed by a quarter rest, a quarter note C5, a quarter note B4, and a quarter note A4. The drums have four 'x' marks. The piano accompaniment continues with chords. Measure 10: The melody starts with a quarter note G4, a quarter note F4, a quarter note E4, and a quarter note D4. The drums have four 'x' marks. The piano accompaniment continues with chords. Measure 11: The melody begins with a quarter note G4, a quarter note F4, a quarter note E4, and a quarter note D4. The drums have four 'x' marks. The piano accompaniment continues with chords.

12

MELODY

DRUMS

A.PIANO 1

This system contains measures 12 and 13. The MELODY staff (treble clef) shows a sequence of notes: Bb, A, G, F, E, D, C, B. The DRUMS staff (percussion clef) has four 'x' marks, one in each measure. The A.PIANO 1 staff (treble clef) features complex chordal textures with many accidentals, including sharps and naturals, and rests.

13

MELODY

DRUMS

A.PIANO 1

This system contains measures 13 and 14. The MELODY staff (treble clef) shows notes: Bb, A, G, F, E, D, C, B. A triplet bracket is placed over the notes G, F, E. The DRUMS staff (percussion clef) has four 'x' marks, one in each measure. The A.PIANO 1 staff (treble clef) continues with complex chordal textures and rests.

14

MELODY

DRUMS

FRETLESS

A.PIANO 1

This system contains measures 14 and 15. The MELODY staff (treble clef) shows notes: Bb, A, G, F, E, D, C, B. The DRUMS staff (percussion clef) has four 'x' marks, one in each measure. The FRETLESS staff (bass clef) shows a sequence of notes: Bb, A, G, F, E, D, C, B. The A.PIANO 1 staff (treble clef) continues with complex chordal textures and rests.

15

MELODY

DRUMS

FRETLESS

STRINGS

A.PIANO 1

16

MELODY

DRUMS

FRETLESS

STRINGS

A.PIANO 1

17

MELODY

DRUMS

FRETLESS

STRINGS

A.PIANO 1

18

MELODY

DRUMS

FRETLESS

STRINGS

A.PIANO 1

19

MELODY

DRUMS

FRETLESS

SYNBRASS 2

STRINGS

A.PIANO 1

20

MELODY

DRUMS

FRETLESS

SYNBRASS 2

STRINGS

A.PIANO 1

21

MELODY

DRUMS

FRETLESS

SYNBRASS 2

STRINGS

A.PIANO 1

22

MELODY

DRUMS

FRETLESS

SYNBRASS 2

STRINGS

A.PIANO 1

23

MELODY

DRUMS

FRETLESS

STRINGS

A.PIANO 1

25

MELODY

DRUMS

FRETLESS

STRINGS

A.PIANO 1



27

MELODY

DRUMS

FRETLESS

STRINGS

A.PIANO 1

29

MELODY

DRUMS

FRETLESS

STRINGS

A.PIANO 1

31

MELODY

DRUMS

FRETLESS

SYNBRASS 2

STRINGS

A.PIANO 1

33

MELODY

DRUMS

FRETLESS

SYNBRASS 2

STRINGS

A.PIANO 1

35

MELODY

DRUMS

FRETLESS

SYNBRASS 2

STRINGS

A.PIANO 1

37

MELODY

DRUMS

FRETLESS

SYNBRASS 2

STRINGS

A.PIANO 1

39

MELODY

DRUMS

JAZZ GTR

FRETLESS

STRINGS

A.PIANO 1

41

DRUMS

JAZZ GTR

FRETLESS

STRINGS

A.PIANO 1

43

DRUMS

JAZZ GTR

FRETLESS

STRINGS

A.PIANO 1

Detailed description: This system of music covers measures 43 and 44. The DRUMS part features a steady rhythm with 'x' marks above the staff indicating cymbal hits. The JAZZ GTR part has a melodic line with a triplet of eighth notes in measure 43. The FRETLESS part has a melodic line with a triplet of eighth notes in measure 44. The STRINGS part consists of sixteenth-note chords, with bracketed groups of six notes in each measure. The A.PIANO 1 part features a complex accompaniment with many beamed sixteenth notes and a triplet in measure 44.

45

DRUMS

JAZZ GTR

FRETLESS

SYNBRASS 2

STRINGS

A.PIANO 1

Detailed description: This system of music covers measures 45 and 46. The DRUMS part continues with the same rhythmic pattern. The JAZZ GTR part has a long, sustained chord in measure 45. The FRETLESS part has a melodic line with triplets in measures 45 and 46. The SYNBRASS 2 part has a melodic line with a long, sustained chord in measure 45. The STRINGS part has a long, sustained chord in measure 45. The A.PIANO 1 part continues with its complex accompaniment, including a triplet in measure 46.

47

MELODY

DRUMS

FRETLESS

STRINGS

A.PIANO 1

49

MELODY

DRUMS

FRETLESS

STRINGS

A.PIANO 1

51

MELODY

DRUMS

FRETLESS

STRINGS

A.PIANO 1

53

MELODY

DRUMS

FRETLESS

STRINGS

A.PIANO 1

55

MELODY

DRUMS

FRETLESS

SYNBRASS 2

STRINGS

A.PIANO 1

57

MELODY

DRUMS

FRETLESS

SYNBRASS 2

STRINGS

A.PIANO 1



58

MELODY

DRUMS

FRETLESS

SYNBRASS 2

STRINGS

A.PIANO 1

60

MELODY

DRUMS

FRETLESS

SYNBRASS 2

STRINGS

A.PIANO 1

Detailed description of the musical score: The score is divided into two systems, measures 58-59 and 60-61. Each system contains six staves. The MELODY staff (treble clef) features a melodic line with a triplet of eighth notes in measure 59. The DRUMS staff (drum clef) shows a complex rhythmic pattern with various note values and rests. The FRETLESS staff (bass clef) has a melodic line with a triplet of eighth notes in measure 59. The SYNBRASS 2 staff (treble clef) has a few notes, including a half note in measure 60. The STRINGS staff (bass clef) features a long, sustained chord with a fermata. The A.PIANO 1 staff (treble clef) has a complex accompaniment with many sixteenth notes and rests.

61

MELODY

DRUMS

FRETLESS

SYNBRASS 2

STRINGS

A.PIANO 1

Detailed description: This block contains the musical score for measures 61 and 62. The MELODY staff (treble clef) features a triplet of eighth notes in measure 61 and a quarter note in measure 62. The DRUMS staff shows a complex rhythmic pattern with various note values and rests. The FRETLESS staff (bass clef) has a melodic line with a triplet of eighth notes in measure 62. The SYNBRASS 2 staff has a single note in measure 61. The STRINGS staff has a chord in measure 61 and a melodic line in measure 62. The A.PIANO 1 staff has a rhythmic accompaniment of eighth notes in both measures.

63

MELODY

DRUMS

JAZZ GTR

FRETLESS

STRINGS

A.PIANO 1

Detailed description: This block contains the musical score for measures 63 and 64. The MELODY staff (treble clef) has a quarter note in measure 63 and a triplet of eighth notes in measure 64. The DRUMS staff shows a rhythmic pattern with various note values and rests. The JAZZ GTR staff (treble clef) has a melodic line with a triplet of eighth notes in measure 63. The FRETLESS staff (bass clef) has a melodic line with a triplet of eighth notes in measure 63. The STRINGS staff has a chord in measure 63 and a melodic line in measure 64. The A.PIANO 1 staff has a rhythmic accompaniment of eighth notes in both measures.

65

MELODY

DRUMS

FRETLESS

STRINGS

A.PIANO 1

67

MELODY

DRUMS

JAZZ GTR

FRETLESS

STRINGS

A.PIANO 1

69

MELODY

DRUMS

FRETLESS

STRINGS

A.PIANO 1

71

MELODY

DRUMS

JAZZ GTR

FRETLESS

STRINGS

A.PIANO 1

73

MELODY

DRUMS

FRETLESS

STRINGS

A.PIANO 1

74

MELODY

DRUMS

JAZZ GTR

FRETLESS

STRINGS

A.PIANO 1

76

MELODY

DRUMS

JAZZ GTR

FRETLESS

STRINGS

A.PIANO 1

78

MELODY

DRUMS

FRETLESS

STRINGS

A.PIANO 1

79

MELODY

DRUMS

FRETLESS

STRINGS

A.PIANO 1

# Dolly Parton - Here You Come Again

## MELODY

♩ = 104,000557

5

10

14

19

23

27

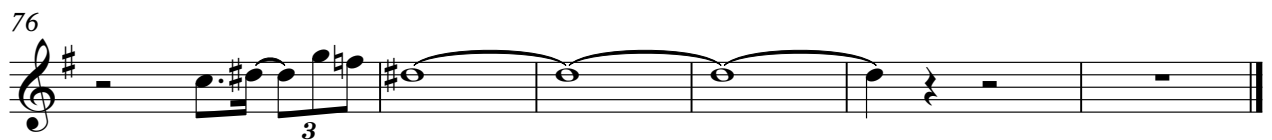
30

34

37

7





# Dolly Parton - Here You Come Again

## DRUMS

♩ = 104,000557

Drum notation for measures 1-7. The staff is in 4/4 time. Measures 1 and 2 are empty. Measures 3-7 contain various drum symbols: circles with an 'x' (snare), circles with a dot (hi-hat), and vertical lines (bass drum).

8

Drum notation for measures 8-13. The staff is in 4/4 time. Measures 8-13 contain various drum symbols: circles with an 'x' (snare), circles with a dot (hi-hat), and vertical lines (bass drum).

14

Drum notation for measures 14-17. The staff is in 4/4 time. Measures 14-17 contain various drum symbols: circles with an 'x' (snare), circles with a dot (hi-hat), and vertical lines (bass drum).

18

Drum notation for measures 18-21. The staff is in 4/4 time. Measures 18-21 contain various drum symbols: circles with an 'x' (snare), circles with a dot (hi-hat), and vertical lines (bass drum). A triplet of eighth notes is marked with a '3' in measure 20.

22

Drum notation for measures 22-26. The staff is in 4/4 time. Measures 22-26 contain various drum symbols: circles with an 'x' (snare), circles with a dot (hi-hat), and vertical lines (bass drum). Triplet markings are present in measures 24 and 26.

27

Drum notation for measures 27-30. The staff is in 4/4 time. Measures 27-30 contain various drum symbols: circles with an 'x' (snare), circles with a dot (hi-hat), and vertical lines (bass drum). A triplet of eighth notes is marked with a '3' in measure 30.

31

Drum notation for measures 31-34. The staff is in 4/4 time. Measures 31-34 contain various drum symbols: circles with an 'x' (snare), circles with a dot (hi-hat), and vertical lines (bass drum). A circled 'x' symbol is present in measure 31.

35

Drum notation for measures 35-38. The staff is in 4/4 time. Measures 35-38 contain various drum symbols: circles with an 'x' (snare), circles with a dot (hi-hat), and vertical lines (bass drum). Triplet markings are present in measures 36 and 38.

39

Drum notation for measures 39-42. The staff is in 4/4 time. Measures 39-42 contain various drum symbols: circles with an 'x' (snare), circles with a dot (hi-hat), and vertical lines (bass drum). A circled 'x' symbol is present in measure 39.

43

Drum notation for measures 43-46. The staff is in 4/4 time. Measures 43-46 contain various drum symbols: circles with an 'x' (snare), circles with a dot (hi-hat), and vertical lines (bass drum). A triplet of eighth notes is marked with a '3' in measure 44.

V.S.

DRUMS

47

Musical notation for drum set from measure 47 to 50. The notation is on a single staff with a double bar line on the left. It features a complex rhythmic pattern with various note values and rests, including eighth and sixteenth notes, and rests marked with 'x'.

51

Musical notation for drum set from measure 51 to 55. The notation is on a single staff with a double bar line on the left. It features a complex rhythmic pattern with various note values and rests, including eighth and sixteenth notes, and rests marked with 'x'.

56

Musical notation for drum set from measure 56 to 59. The notation is on a single staff with a double bar line on the left. It features a complex rhythmic pattern with various note values and rests, including eighth and sixteenth notes, and rests marked with 'x'. A triplet of eighth notes is indicated by a bracket and the number '3' at the end of the staff.

60

Musical notation for drum set from measure 60 to 63. The notation is on a single staff with a double bar line on the left. It features a complex rhythmic pattern with various note values and rests, including eighth and sixteenth notes, and rests marked with 'x'. A triplet of eighth notes is indicated by a bracket and the number '3' at the end of the staff.

64

Musical notation for drum set from measure 64 to 67. The notation is on a single staff with a double bar line on the left. It features a complex rhythmic pattern with various note values and rests, including eighth and sixteenth notes, and rests marked with 'x'.

68

Musical notation for drum set from measure 68 to 71. The notation is on a single staff with a double bar line on the left. It features a complex rhythmic pattern with various note values and rests, including eighth and sixteenth notes, and rests marked with 'x'.

72

Musical notation for drum set from measure 72 to 75. The notation is on a single staff with a double bar line on the left. It features a complex rhythmic pattern with various note values and rests, including eighth and sixteenth notes, and rests marked with 'x'.

76

Musical notation for drum set from measure 76 to 78. The notation is on a single staff with a double bar line on the left. It features a complex rhythmic pattern with various note values and rests, including eighth and sixteenth notes, and rests marked with 'x'. The notation ends with a double bar line and a fermata symbol, with the number '2' written above the staff.

$\text{♩} = 104,000557$

**37**

**41**

**47**

**16**

**2**

**3**

**69**

**2**

**2**

**75**

**4**

FRETLESS

Dolly Parton - Here You Come Again

♩ = 104,000557

12

16

20

24

29

33

37

42

46

50

V.S.

55



59



64



68



72

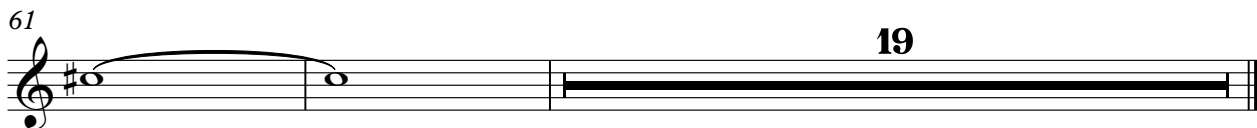
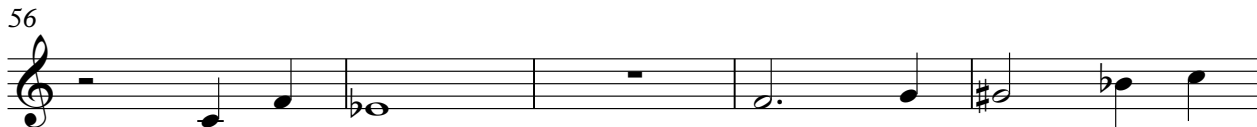


76



78





# Dolly Parton - Here You Come Again

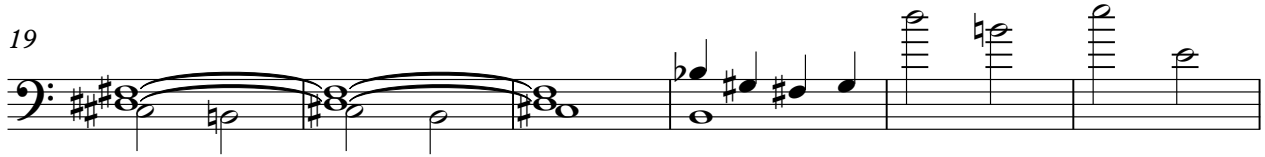
## STRINGS

♩ = 104,000557

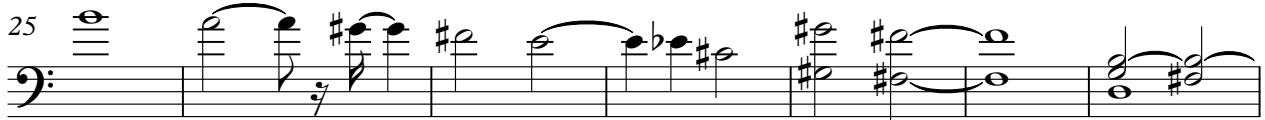
13



19



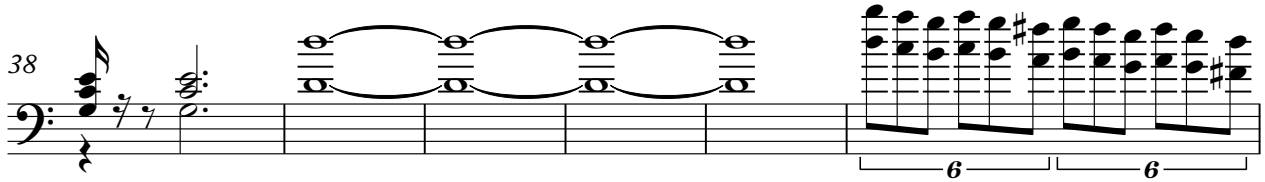
25



32




38



44



50



57



63



68



V.S.



2

73

STRINGS

77

Dolly Parton - Here You Come Again

A.PIANO 1

♩ = 104,000557

5

7

9

11

13

15

17

19

20

V.S.

Musical score for A.PIANO 1, measures 21-42. The score is written in treble clef with a key signature of two sharps (F# and C#). The music consists of a single melodic line with a complex rhythmic pattern, primarily using eighth and sixteenth notes. Measure 21 features a triplet of eighth notes. The piece concludes with a final cadence in measure 42.

Musical score for A.PIANO 1, measures 44-65. The score is written in treble clef with a key signature of one flat (B-flat). The music consists of a single melodic line with a complex rhythmic pattern of eighth and sixteenth notes, often beamed together. Measure 46 features a triplet of eighth notes. The piece concludes with a double bar line at the end of measure 65.

V.S.

68



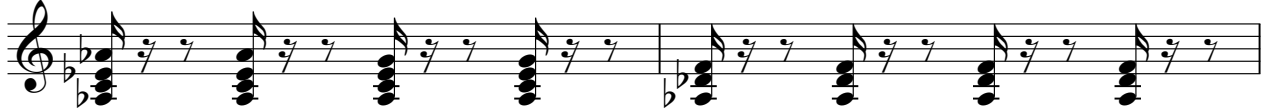
71



74



77



79

