

DQ5 - Continue Your Quest

♩ = 140,000137

(Willow)

Robert Aaron Eason

Composed by:

Continue Your Quest

Kouichi Sugiyama

Sequenced by:

Detailed description: The image shows a musical score for the song 'Continue Your Quest' from the game DQ5. It consists of six staves. The first staff is for guitar, labeled '(Willow)', in 16/16 time with a tempo of 140,000137. It features a series of chords and single notes, some marked with 'x' above them. The second staff is for the vocal line by Robert Aaron Eason, in 16/16 time, with a melody of eighth and quarter notes. The third staff is for piano accompaniment, labeled 'Composed by:', in 16/16 time, with a rhythmic pattern of eighth notes and rests. The fourth staff is for the piano accompaniment, labeled 'Continue Your Quest', in 16/16 time with the same tempo, featuring a similar rhythmic pattern. The fifth staff is for piano accompaniment by Kouichi Sugiyama, in 16/16 time, with a melody of eighth notes. The sixth staff is for piano accompaniment, labeled 'Sequenced by:', in 16/16 time, with a melody of eighth notes.

2

(Willow)

Robert Aaron Eason

Composed by:

Continue Your Quest

Kouichi Sugiyama

Sequenced by:

3

(Willow)

Robert Aaron Eason

Composed by:

Continue Your Quest

Kouichi Sugiyama

Sequenced by:

4

(Willow)

Robert Aaron Eason

Composed by:

Continue Your Quest

Kouichi Sugiyama

Sequenced by:

5

(Willow)

Robert Aaron Eason

Composed by:

Continue Your Quest

Kouichi Sugiyama

Sequenced by:

6

(Willow)

Robert Aaron Eason

Composed by:

Continue Your Quest

Kouichi Sugiyama

Sequenced by:

7

(Willow)

Robert Aaron Eason

Composed by:

Continue Your Quest

Kouichi Sugiyama

Sequenced by:

8

(Willow)

Robert Aaron Eason

Composed by:

Continue Your Quest

Kouichi Sugiyama

Sequenced by:

9

(Willow)

Robert Aaron Eason

Composed by:

Continue Your Quest

Kouichi Sugiyama

Sequenced by:

10

(Willow)

Robert Aaron Eason

Composed by:

Continue Your Quest

Kouichi Sugiyama

Sequenced by:

11

(Willow)

Robert Aaron Eason

Composed by:

Continue Your Quest

Kouichi Sugiyama

Sequenced by:

12

(Willow)

Robert Aaron Eason

Composed by:

Continue Your Quest

Kouichi Sugiyama

Sequenced by:

Detailed description: This block contains the musical notation for measure 12. It consists of six staves. The top staff is a guitar staff with a treble clef and a double bar line at the beginning, containing a series of chords marked with 'x' above them. The second staff is a vocal line for Robert Aaron Eason, with a treble clef and a double bar line at the beginning, showing a few notes and rests. The third staff is labeled 'Composed by:' and contains a treble clef with a series of eighth notes and rests. The fourth staff is labeled 'Continue Your Quest' and contains a treble clef with a series of eighth notes and rests. The fifth staff is labeled 'Kouichi Sugiyama' and contains a treble clef with a series of eighth notes and rests. The sixth staff is labeled 'Sequenced by:' and contains a treble clef with a series of eighth notes and rests.

13

(Willow)

Robert Aaron Eason

Composed by:

Continue Your Quest

Kouichi Sugiyama

Sequenced by:

Detailed description: This block contains the musical notation for measure 13. It consists of six staves. The top staff is a guitar staff with a treble clef and a double bar line at the beginning, containing a series of chords marked with 'x' above them. The second staff is a vocal line for Robert Aaron Eason, with a treble clef and a double bar line at the beginning, showing a few notes and rests. The third staff is labeled 'Composed by:' and contains a treble clef with a series of eighth notes and rests. The fourth staff is labeled 'Continue Your Quest' and contains a treble clef with a series of eighth notes and rests. The fifth staff is labeled 'Kouichi Sugiyama' and contains a treble clef with a series of eighth notes and rests. The sixth staff is labeled 'Sequenced by:' and contains a treble clef with a series of eighth notes and rests.

14

(Willow)

Robert Aaron Eason

Composed by:

Continue Your Quest

Kouichi Sugiyama

Sequenced by:

15

(Willow)

Robert Aaron Eason

Composed by:

Continue Your Quest

Kouichi Sugiyama

Sequenced by:

16

(Willow)

Robert Aaron Eason

Composed by:

Continue Your Quest

Kouichi Sugiyama

Sequenced by:

18

(Willow)

Robert Aaron Eason

Composed by:

Continue Your Quest

Kouichi Sugiyama

Sequenced by:

19

(Willow)

Robert Aaron Eason

Composed by:

Continue Your Quest

Kouichi Sugiyama

Sequenced by:

20

(Willow)

Robert Aaron Eason

Composed by:

Continue Your Quest

Kouichi Sugiyama

Sequenced by:

21

(Willow)

Robert Aaron Eason

Composed by:

Continue Your Quest

Kouichi Sugiyama

Sequenced by:

22

(Willow)

Robert Aaron Eason

Composed by:

Continue Your Quest

Kouichi Sugiyama

Sequenced by:

23

(Willow)

Robert Aaron Eason

Composed by:

Continue Your Quest

Kouichi Sugiyama

Sequenced by:

24

(Willow)

Robert Aaron Eason

Composed by:

Continue Your Quest

Kouichi Sugiyama

Sequenced by:

25

(Willow)

Robert Aaron Eason

Composed by:

Continue Your Quest

Kouichi Sugiyama

Sequenced by:

26

(Willow)

Robert Aaron Eason

Composed by:

Continue Your Quest

Kouichi Sugiyama

Sequenced by:

27

(Willow)

Robert Aaron Eason

Composed by:

Continue Your Quest

Kouichi Sugiyama

Sequenced by:

28

(Willow)

Robert Aaron Eason

Composed by:

Continue Your Quest

Kouichi Sugiyama

Sequenced by:

29

(Willow)

Robert Aaron Eason

Composed by:

Continue Your Quest

Kouichi Sugiyama

Sequenced by:

30

(Willow)

Robert Aaron Eason

Composed by:

Continue Your Quest

Kouichi Sugiyama

Sequenced by:

(Willow)

Robert Aaron Eason

Composed by:

Continue Your Quest

Kouichi Sugiyama

Sequenced by:

(Willow)

Robert Aaron Eason

Composed by:

Continue Your Quest

Kouichi Sugiyama

Sequenced by:

(Willow)

DQ5 - Continue Your Quest

♩ = 140,000137

16

3

5

7

9

11

13

17

19

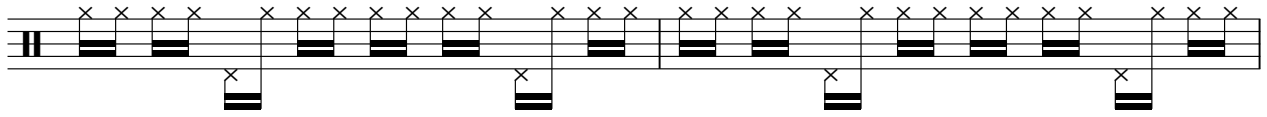
21

V.S.

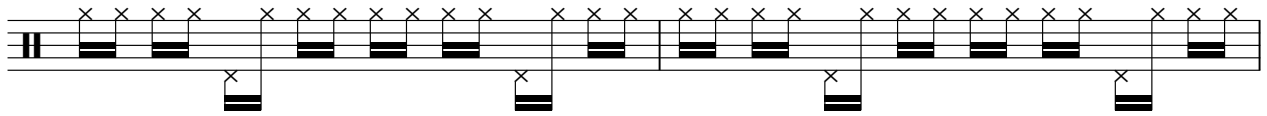
2

(Willow)

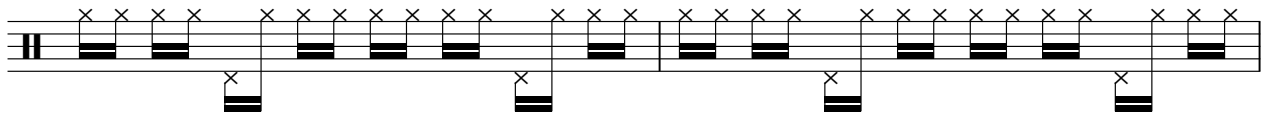
23



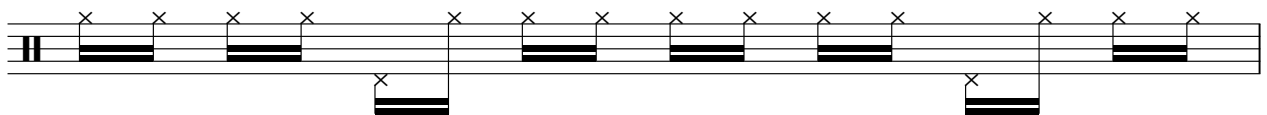
25



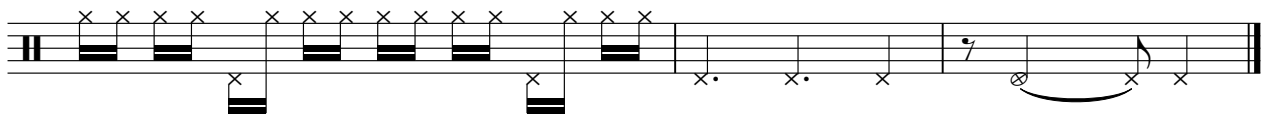
27



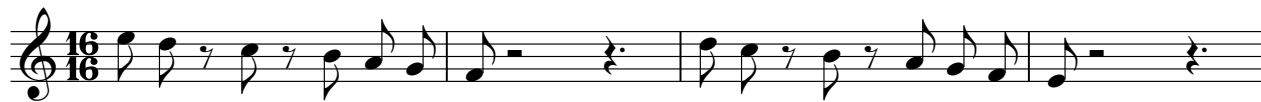
29



30



♩ = 140,000137



DQ5 - Continue Your Quest

Composed by:

$\text{♩} = 140,000137$

1
3
6
9
11
14
17
19

V.S.

2

Composed by:

22



25



27



30



Continue Your Quest

DQ5 - Continue Your Quest

$\text{♩} = 140,000137$

3

6

8

10

12

14

17

20

22

V.S.

2

Continue Your Quest

24



26



28



30



♩ = 140,000137

3

5

7

10

12

14

16

18

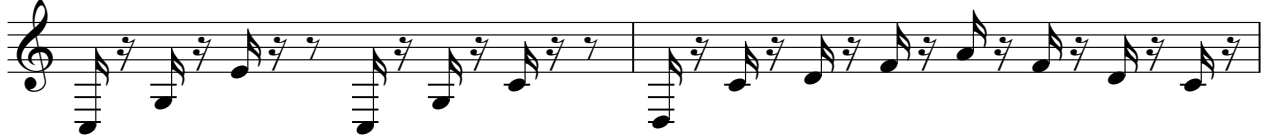
20

V.S.

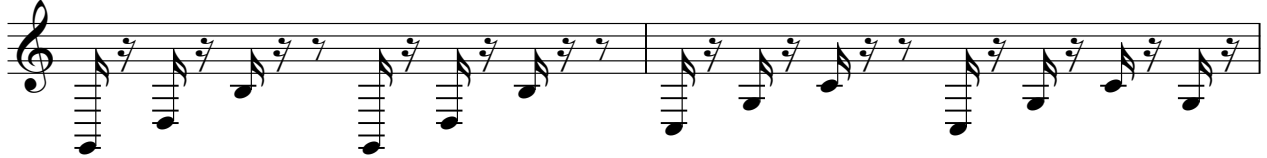
22



25



27



29



31



DQ5 - Continue Your Quest

Sequenced by:

♩ = 140,000137

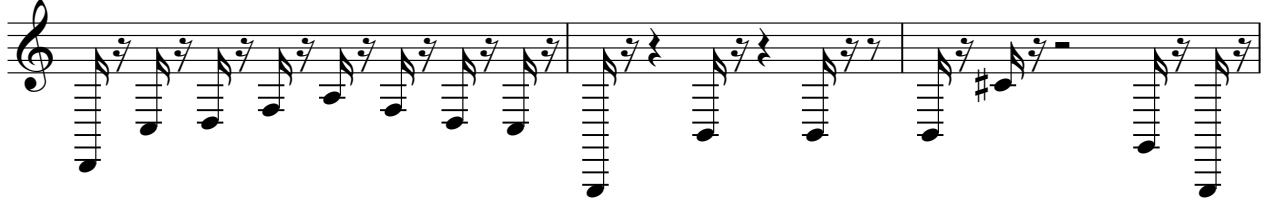
The image displays a musical score for guitar, consisting of ten staves. The time signature is 16/16, indicated by a large '16' over the first staff. The tempo is marked as ♩ = 140,000137. The music is written in a single melodic line on a treble clef. The notation includes various rhythmic values such as eighth and sixteenth notes, often beamed together, and rests. There are several accidentals (sharps and naturals) scattered throughout the piece. The score is divided into measures by vertical bar lines, with some measures containing multiple beams of notes. The overall style is a fast, rhythmic sequence of notes.

V.S.

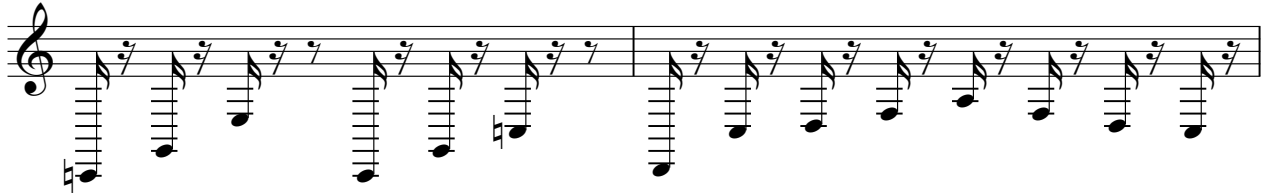
2

Sequenced by:

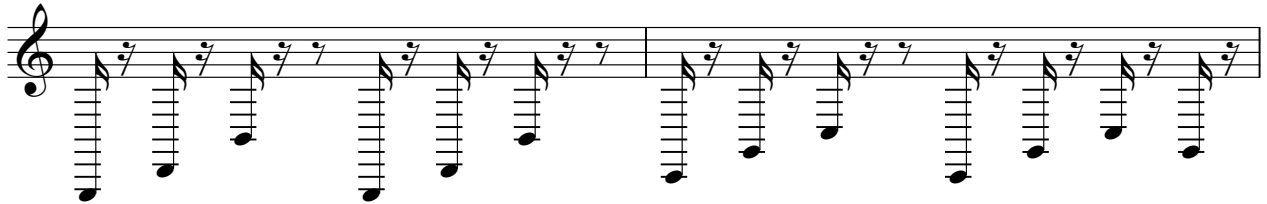
22



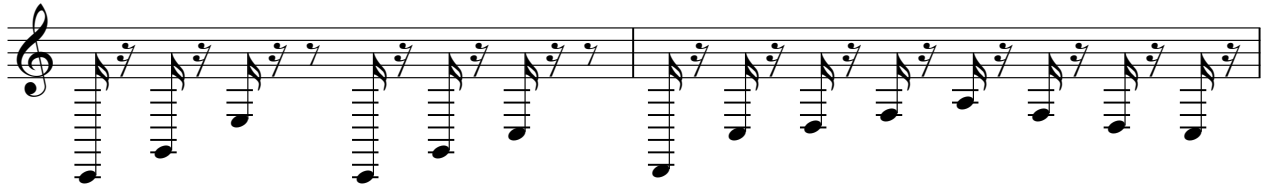
25



27



29



31

