

Sepultura - Roots

♩ = 256,410248

cns@post7.tele.dk

http://home6.inet.tele.dk/chrravn/

Tracked by :

Sepultura's

RazTor of EXE FORCE

4

cns@post7.tele.dk

http://home6.inet.tele.dk/chrravn/

Tracked by :

Sepultura's

RazTor of EXE FORCE

7

cns@post7.tele.dk

http://home6.inet.tele.dk/chrravn/

"Roots Bloody Roots"

Tracked by :

Sepultura's

RazTor of EXE FORCE

10

cns@post7.tele.dk

http://home6.inet.tele.dk/chrravn/

"Roots Bloody Roots"

Tracked by :

Sepultura's

RazTor of EXE FORCE

13

cns@post7.tele.dk

http://home6.inet.tele.dk/chrravn/

"Roots Bloody Roots"

Tracked by :

Sepultura's

RazTor of EXE FORCE

16

cns@post7.tele.dk

http://home6.inet.tele.dk/chrravn/

"Roots Bloody Roots"

Tracked by :

Sepultura's

RazTor of EXE FORCE

19

cns@post7.tele.dk

http://home6.inet.tele.dk/chrravn/

Tracked by :

Sepultura's

RazTor of EXE FORCE

2 3 3 2 3 3 3 2 4 2 3 3 2 3

22

cns@post7.tele.dk

http://home6.inet.tele.dk/chrravn/

Tracked by :

Sepultura's

RazTor of EXE FORCE

3 3 2 4 2 3 3 2 3 3 3 2 4

25

cns@post7.tele.dk

http://home6.inet.tele.dk/chrravn/

Tracked by :

Sepultura's

RazTor of EXE FORCE

28

cns@post7.tele.dk

http://home6.inet.tele.dk/chrravn/

Tracked by :

Sepultura's

RazTor of EXE FORCE

31

cns@post7.tele.dk

http://home6.inet.tele.dk/chrravn/

Tracked by :

Sepultura's

RazTor of EXE FORCE

34

cns@post7.tele.dk

http://home6.inet.tele.dk/chrravn/

Tracked by :

Sepultura's

RazTor of EXE FORCE

37

cns@post7.tele.dk

http://home6.inet.tele.dk/chrravn/

Tracked by :

Sepultura's

RazTor of EXE FORCE

Detailed description: This block contains the musical notation for measures 37 through 39. It features five staves: a drum staff with a star symbol indicating a specific drum hit; a guitar staff with a star symbol; a vocal staff with a treble clef and notes; a guitar tablature staff with fret numbers (2, 3, 3, 2, 3, 3, 3, 2, 3, 2, 3, 3, 2, 3); and a bass staff with a bass clef and notes.

40

cns@post7.tele.dk

http://home6.inet.tele.dk/chrravn/

Tracked by :

Sepultura's

RazTor of EXE FORCE

Detailed description: This block contains the musical notation for measures 40 through 42. It features five staves: a drum staff with a star symbol; a guitar staff with a star symbol; a vocal staff with a treble clef and notes; a guitar tablature staff with fret numbers (3, 3, 2, 3, 2, 3, 3, 2, 3, 3, 3, 2, 3); and a bass staff with a bass clef and notes.

43

cns@post7.tele.dk

http://home6.inet.tele.dk/chrravn/

Tracked by :

Sepultura's

RazTor of EXE FORCE

46

cns@post7.tele.dk

http://home6.inet.tele.dk/chrravn/

Tracked by :

Sepultura's

RazTor of EXE FORCE

49

cns@post7.tele.dk

http://home6.inet.tele.dk/chrravn/

Tracked by :

Sepultura's

RazTor of EXE FORCE

Detailed description of the musical score for measures 49-50: The score is arranged in a system with five staves. The top staff is a drum set part with asterisks indicating hits. The second staff is a guitar part with eighth notes. The third staff is a vocal line in treble clef. The fourth staff is a guitar tab with fret numbers: 1, 0, 5, 4, 4, 5. The bottom staff is a bass line in bass clef.

51

cns@post7.tele.dk

http://home6.inet.tele.dk/chrravn/

Tracked by :

Sepultura's

RazTor of EXE FORCE

Detailed description of the musical score for measures 51-52: The score is arranged in a system with five staves. The top staff is a drum set part with asterisks indicating hits. The second staff is a guitar part with eighth notes. The third staff is a vocal line in treble clef. The fourth staff is a guitar tab with fret numbers: 1, 0, 5, 4, 4, 5. The bottom staff is a bass line in bass clef.

53

cns@post7.tele.dk

http://home6.inet.tele.dk/chrravn/

Tracked by :

Sepultura's

RazTor of EXE FORCE

55

cns@post7.tele.dk

http://home6.inet.tele.dk/chrravn/

Tracked by :

Sepultura's

RazTor of EXE FORCE

57

cns@post7.tele.dk

http://home6.inet.tele.dk/chrravn/

Tracked by :

Sepultura's

RazTor of EXE FORCE

60

cns@post7.tele.dk

http://home6.inet.tele.dk/chrravn/

Tracked by :

Sepultura's

RazTor of EXE FORCE

63

cns@post7.tele.dk

http://home6.inet.tele.dk/chrravn/

Tracked by :

Sepultura's

RazTor of EXE FORCE

66

cns@post7.tele.dk

http://home6.inet.tele.dk/chrravn/

Tracked by :

Sepultura's

RazTor of EXE FORCE

69

cns@post7.tele.dk

http://home6.inet.tele.dk/chrravn/

Tracked by :

Sepultura's

RazTor of EXE FORCE

72

cns@post7.tele.dk

http://home6.inet.tele.dk/chrravn/

Tracked by :

Sepultura's

RazTor of EXE FORCE

75

cns@post7.tele.dk

http://home6.inet.tele.dk/chrravn/

Tracked by :

Sepultura's

RazTor of EXE FORCE

2 3 3 2 3 3 3 2 4 2 3 3 2 3

78

cns@post7.tele.dk

http://home6.inet.tele.dk/chrravn/

Tracked by :

Sepultura's

RazTor of EXE FORCE

3 3 2 4 2 3 3 2 3 3 3 2 4

81

cns@post7.tele.dk

http://home6.inet.tele.dk/chrravn/

Tracked by :

Sepultura's

RazTor of EXE FORCE

83

cns@post7.tele.dk

http://home6.inet.tele.dk/chrravn/

Tracked by :

Sepultura's

RazTor of EXE FORCE

86

cns@post7.tele.dk

http://home6.inet.tele.dk/chrravn/

Tracked by :

Sepultura's

RazTor of EXE FORCE

89

cns@post7.tele.dk

http://home6.inet.tele.dk/chrravn/

Tracked by :

Sepultura's

RazTor of EXE FORCE

92

cns@post7.tele.dk

http://home6.inet.tele.dk/chrravn/

Tracked by :

Sepultura's

RazTor of EXE FORCE

95

cns@post7.tele.dk

http://home6.inet.tele.dk/chrravn/

"Roots Bloody Roots"

Tracked by :

Sepultura's

RazTor of EXE FORCE

98

cns@post7.tele.dk

http://home6.inet.tele.dk/chrravn/

"Roots Bloody Roots"

Tracked by :

Sepultura's

RazTor of EXE FORCE

101

cns@post7.tele.dk

http://home6.inet.tele.dk/chrravn/

"Roots Bloody Roots"

Tracked by :

Sepultura's

RazTor of EXE FORCE

104

cns@post7.tele.dk

http://home6.inet.tele.dk/chrravn/

"Roots Bloody Roots"

Tracked by :

Sepultura's

RazTor of EXE FORCE

Detailed description: This block contains the musical score for the first system, starting at measure 104. It features two MIDI staves at the top, a vocal line in treble clef, a guitar line with TAB notation below it, and a bass line in bass clef. The guitar TAB includes fret numbers: 3 2 3 2 3 | 3 3 | 2 3 | 3 3 2 3. The score is attributed to 'Tracked by : RazTor of EXE FORCE' and 'Sepultura's'.

107

cns@post7.tele.dk

http://home6.inet.tele.dk/chrravn/

Tracked by :

Sepultura's

RazTor of EXE FORCE

Detailed description: This block contains the musical score for the second system, starting at measure 107. It features two MIDI staves at the top, a vocal line in treble clef, a guitar line with TAB notation below it, and a bass line in bass clef. The guitar TAB includes fret numbers: 3 2 3 3 2 3 | 3 3 2 3 | 3 2 3 3 2 3. The score is attributed to 'Tracked by : RazTor of EXE FORCE' and 'Sepultura's'.

110

cns@post7.tele.dk

http://home6.inet.tele.dk/chrravn/

Tracked by :

Sepultura's

RazTor of EXE FORCE

113

cns@post7.tele.dk

http://home6.inet.tele.dk/chrravn/

Tracked by :

Sepultura's

RazTor of EXE FORCE

116

cns@post7.tele.dk

http://home6.inet.tele.dk/chrravn/

Tracked by :

Sepultura's

RazTor of EXE FORCE

119

cns@post7.tele.dk

http://home6.inet.tele.dk/chrravn/

Tracked by :

Sepultura's

RazTor of EXE FORCE

122

cns@post7.tele.dk

http://home6.inet.tele.dk/chrravn/

Tracked by :

Sepultura's

RazTor of EXE FORCE

3 3 2 3 3 2 3 3 2 3 3 3 2 3

125

cns@post7.tele.dk

http://home6.inet.tele.dk/chrravn/

Tracked by :

Sepultura's

RazTor of EXE FORCE

3 2 3 3 2 3 3 3 2 3 3 2 3 3 2 3

128

cns@post7.tele.dk

http://home6.inet.tele.dk/chrravn/

Tracked by :

Sepultura's

RazTor of EXE FORCE

131

cns@post7.tele.dk

http://home6.inet.tele.dk/chrravn/

Tracked by :

Sepultura's

RazTor of EXE FORCE

133

cns@post7.tele.dk

http://home6.inet.tele.dk/chrravn/

Tracked by :

Sepultura's

RazTor of EXE FORCE

135

cns@post7.tele.dk

http://home6.inet.tele.dk/chrravn/

Tracked by :

Sepultura's

RazTor of EXE FORCE

137

cns@post7.tele.dk

http://home6.inet.tele.dk/chrravn/

"Roots Bloody Roots"

Tracked by :

Sepultura's

RazTor of EXE FORCE

139

cns@post7.tele.dk

http://home6.inet.tele.dk/chrravn/

"Roots Bloody Roots"

Tracked by :

Sepultura's

RazTor of EXE FORCE

142

cns@post7.tele.dk

http://home6.inet.tele.dk/chrravn/

"Roots Bloody Roots"

Tracked by :

Sepultura's

RazTor of EXE FORCE

145

cns@post7.tele.dk

http://home6.inet.tele.dk/chrravn/

"Roots Bloody Roots"

Tracked by :

Sepultura's

RazTor of EXE FORCE

148

cns@post7.tele.dk

http://home6.inet.tele.dk/chrravn/

"Roots Bloody Roots"

Tracked by :

Sepultura's

RazTor of EXE FORCE

151

cns@post7.tele.dk

http://home6.inet.tele.dk/chrravn/

"Roots Bloody Roots"

Tracked by :

Sepultura's

RazTor of EXE FORCE

154

cns@post7.tele.dk

http://home6.inet.tele.dk/chrravn/

Tracked by :

Sepultura's

RazTor of EXE FORCE

2 2 2 2 2 2 2 3 2 4 3

157

cns@post7.tele.dk

http://home6.inet.tele.dk/chrravn/

Tracked by :

Sepultura's

RazTor of EXE FORCE

3 3 2 4 3 3 3 3 2 4 3

161

cns@post7.tele.dk

http://home6.inet.tele.dk/chrravn/

Tracked by :

Sepultura's

RazTor of EXE FORCE

165

cns@post7.tele.dk

http://home6.inet.tele.dk/chrravn/

Tracked by :

Sepultura's

RazTor of EXE FORCE

169

cns@post7.tele.dk

http://home6.inet.tele.dk/chrravn/

Tracked by :

Sepultura's

RazTor of EXE FORCE

173

cns@post7.tele.dk

http://home6.inet.tele.dk/chrravn/

Tracked by :

Sepultura's

RazTor of EXE FORCE

177

cns@post7.tele.dk

http://home6.inet.tele.dk/chrravn/

Tracked by :

Sepultura's

RazTor of EXE FORCE

181

cns@post7.tele.dk

http://home6.inet.tele.dk/chrravn/

Tracked by :

Sepultura's

RazTor of EXE FORCE

185

cns@post7.tele.dk

http://home6.inet.tele.dk/chrravn/

Tracked by :

Sepultura's

RazTor of EXE FORCE

189

cns@post7.tele.dk

http://home6.inet.tele.dk/chrravn/

Tracked by :

Sepultura's

RazTor of EXE FORCE

193

cns@post7.tele.dk

http://home6.inet.tele.dk/chrravn/

Tracked by :

Sepultura's

RazTor of EXE FORCE

The musical score for measures 193-196 consists of four staves. The top staff is a drum staff with a hi-hat pattern of eighth notes, marked with asterisks. The second staff is a bass staff with a steady eighth-note line. The third staff is a guitar staff with a melodic line. The fourth staff is a guitar tab staff with fret numbers (2, 3, 3, 3, 3, 3, 2, 3, 3, 3, 3, 3) and triplet markings.

197

cns@post7.tele.dk

http://home6.inet.tele.dk/chrravn/

Tracked by :

Sepultura's

RazTor of EXE FORCE

The musical score for measures 197-200 consists of four staves. The top staff is a drum staff with a hi-hat pattern of eighth notes, marked with asterisks. The second staff is a bass staff with a steady eighth-note line. The third staff is a guitar staff with a melodic line. The fourth staff is a guitar tab staff with fret numbers (2, 3, 3, 3, 3, 3, 2, 3) and triplet markings.

200

cns@post7.tele.dk

http://home6.inet.tele.dk/chrravn/

Tracked by :

Sepultura's

RazTor of EXE FORCE

The image displays a musical score for guitar and bass. It consists of five staves. The top two staves are guitar staves in standard tuning, with a treble clef and a key signature of one sharp (F#). The first staff contains a melodic line with various ornaments and a double bar line. The second staff contains a bass line with a similar melodic structure. The third staff is a guitar tab, with six lines representing the strings. It includes fret numbers (3, 2, 3) and triplets (3) for the first four measures. The fourth staff is a bass staff in bass clef, with a key signature of one sharp (F#). The fifth staff is a bass staff in bass clef, with a key signature of one sharp (F#). The score is divided into measures by vertical bar lines.

Sepultura - Roots

♩ = 256,410248

4/4

Measures 1-5: A sequence of eighth notes on the 1st string, starting with an asterisk on the first measure and another on the fifth measure.

7

Measures 6-10: A sequence of eighth notes on the 1st string, with an asterisk on the eighth measure.

13

Measures 11-15: A sequence of eighth notes on the 1st string, with asterisks on the 11th, 13th, 14th, 15th, and 16th measures.

19

Measures 16-20: A sequence of eighth notes on the 1st string, with asterisks on every measure.

25

Measures 21-25: A sequence of eighth notes on the 1st string, with asterisks on every measure.

31

Measures 26-30: A sequence of eighth notes on the 1st string, with asterisks on the 26th, 27th, 28th, and 29th measures.

37

Measures 31-35: A sequence of eighth notes on the 1st string, with asterisks on the 31st and 34th measures.

43

Measures 36-42: A sequence of eighth notes on the 1st string, with an asterisk on the 39th measure.

49

Measures 43-48: A sequence of eighth notes on the 1st string, with asterisks on every measure.

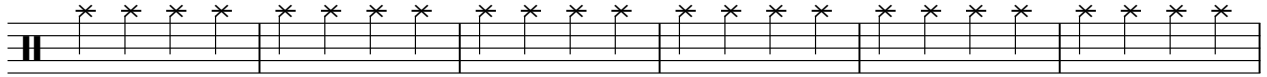
55

Measures 49-54: A sequence of eighth notes on the 1st string, with asterisks on the 49th, 50th, 51st, and 52nd measures.

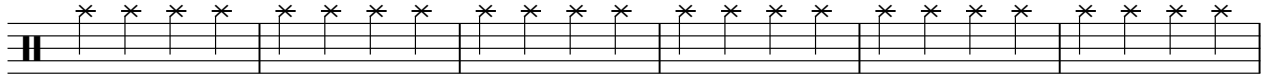
61



67



73



79



85



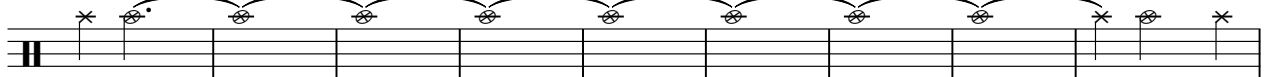
91



97



105



114



120



126



132



138



144



150



156



162



168



175



184



V.S.

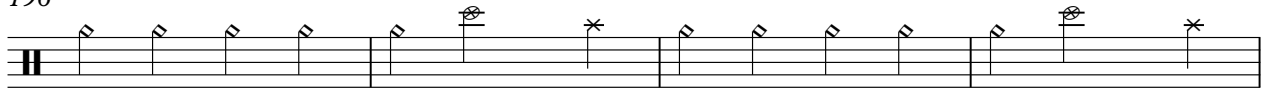
4

cns@post7.tele.dk

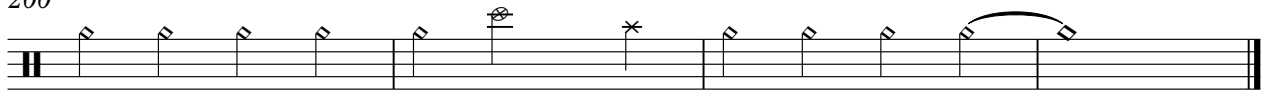
190



196



200



Sepultura - Roots

<http://home6.inet.tele.dk/chrravn/>

♩ = 256,410248



6



12



18



24



30



35



40



45



50



V.S.

54



58



64



70



76



82



87



92



98



106



114



"Roots Bloody Roots"

Sepultura - Roots

♩ = 256,410248

8

13

17 80

100

105 32

141

147

152 50

Sepultura - Roots

Tracked by :

♩ = 256,410248



V.S.

102



107



112



117



122



127



132



137



142



147



V.S.

Sepultura - Roots

Sepultura's

♩ = 256,410248

6

11

16

21

26

31

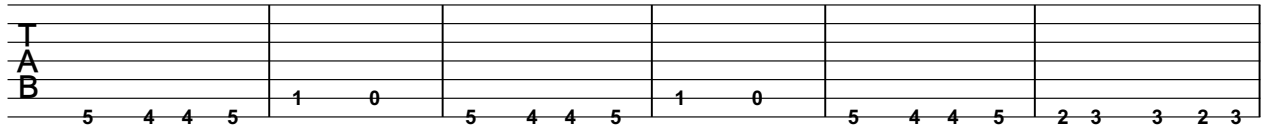
36

41

46

V.S.

T
A
B

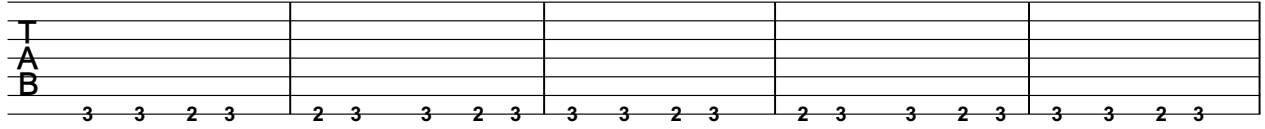


5 4 4 5 | 1 0 | 5 4 4 5 | 1 0 | 5 4 4 5 | 2 3 3 2 3

Detailed description: This is the first guitar tab system. It consists of six horizontal lines representing guitar strings. The notes are indicated by numbers 0-5 below the lines. The system is divided into six measures by vertical bar lines. The notes in each measure are: Measure 1: 5, 4, 4, 5; Measure 2: 1, 0; Measure 3: 5, 4, 4, 5; Measure 4: 1, 0; Measure 5: 5, 4, 4, 5; Measure 6: 2, 3, 3, 2, 3.

58

T
A
B

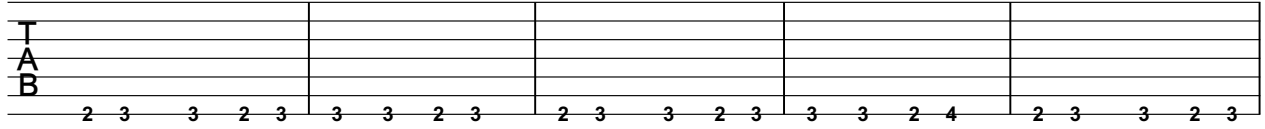


3 3 2 3 | 2 3 3 2 3 | 3 3 2 3 | 2 3 3 2 3 | 3 3 2 3

Detailed description: This is the second guitar tab system. It consists of six horizontal lines representing guitar strings. The notes are indicated by numbers 2-3 below the lines. The system is divided into five measures by vertical bar lines. The notes in each measure are: Measure 1: 3, 3, 2, 3; Measure 2: 2, 3, 3, 2, 3; Measure 3: 3, 3, 2, 3; Measure 4: 2, 3, 3, 2, 3; Measure 5: 3, 3, 2, 3.

63

T
A
B

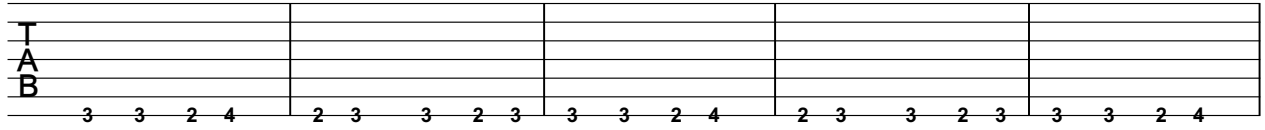


2 3 3 2 3 | 3 3 2 3 | 2 3 3 2 3 | 3 3 2 4 | 2 3 3 2 3

Detailed description: This is the third guitar tab system. It consists of six horizontal lines representing guitar strings. The notes are indicated by numbers 2-4 below the lines. The system is divided into five measures by vertical bar lines. The notes in each measure are: Measure 1: 2, 3, 3, 2, 3; Measure 2: 3, 3, 2, 3; Measure 3: 2, 3, 3, 2, 3; Measure 4: 3, 3, 2, 4; Measure 5: 2, 3, 3, 2, 3.

68

T
A
B

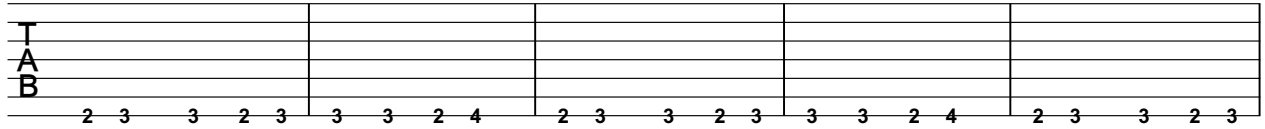


3 3 2 4 | 2 3 3 2 3 | 3 3 2 4 | 2 3 3 2 3 | 3 3 2 4

Detailed description: This is the fourth guitar tab system. It consists of six horizontal lines representing guitar strings. The notes are indicated by numbers 2-4 below the lines. The system is divided into five measures by vertical bar lines. The notes in each measure are: Measure 1: 3, 3, 2, 4; Measure 2: 2, 3, 3, 2, 3; Measure 3: 3, 3, 2, 4; Measure 4: 2, 3, 3, 2, 3; Measure 5: 3, 3, 2, 4.

73

T
A
B

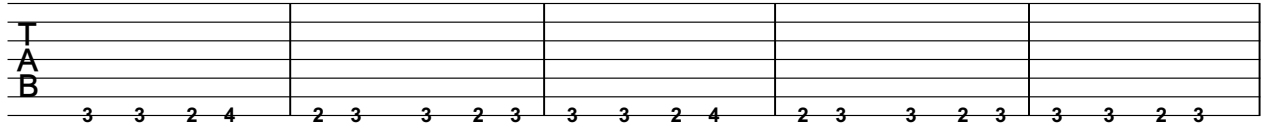


2 3 3 2 3 | 3 3 2 4 | 2 3 3 2 3 | 3 3 2 4 | 2 3 3 2 3

Detailed description: This is the fifth guitar tab system. It consists of six horizontal lines representing guitar strings. The notes are indicated by numbers 2-4 below the lines. The system is divided into five measures by vertical bar lines. The notes in each measure are: Measure 1: 2, 3, 3, 2, 3; Measure 2: 3, 3, 2, 4; Measure 3: 2, 3, 3, 2, 3; Measure 4: 3, 3, 2, 4; Measure 5: 2, 3, 3, 2, 3.

78

T
A
B




3 3 2 4 | 2 3 3 2 3 | 3 3 2 4 | 2 3 3 2 3 | 3 3 2 3

Detailed description: This is the sixth guitar tab system. It consists of six horizontal lines representing guitar strings. The notes are indicated by numbers 2-4 below the lines. The system is divided into five measures by vertical bar lines. The notes in each measure are: Measure 1: 3, 3, 2, 4; Measure 2: 2, 3, 3, 2, 3; Measure 3: 3, 3, 2, 4; Measure 4: 2, 3, 3, 2, 3; Measure 5: 3, 3, 2, 3.

83

T
A
B

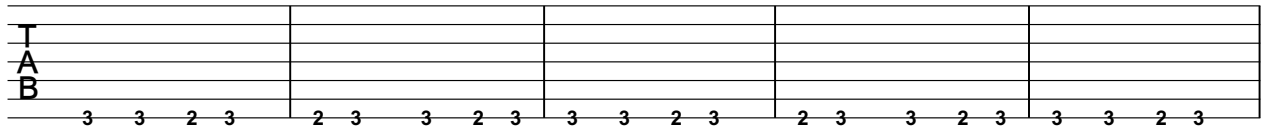


2 3 3 2 3 | 3 3 2 3 | 2 3 3 2 3 | 3 3 2 3 | 2 3 3 2 3

Detailed description: This is the seventh guitar tab system. It consists of six horizontal lines representing guitar strings. The notes are indicated by numbers 2-3 below the lines. The system is divided into five measures by vertical bar lines. The notes in each measure are: Measure 1: 2, 3, 3, 2, 3; Measure 2: 3, 3, 2, 3; Measure 3: 2, 3, 3, 2, 3; Measure 4: 3, 3, 2, 3; Measure 5: 2, 3, 3, 2, 3.

88

T
A
B

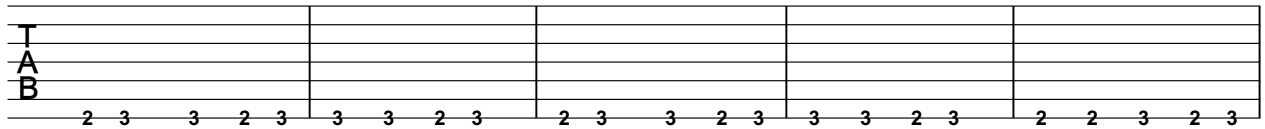


3 3 2 3 | 2 3 3 2 3 | 3 3 2 3 | 2 3 3 2 3 | 3 3 2 3

Detailed description: This is the eighth guitar tab system. It consists of six horizontal lines representing guitar strings. The notes are indicated by numbers 2-3 below the lines. The system is divided into five measures by vertical bar lines. The notes in each measure are: Measure 1: 3, 3, 2, 3; Measure 2: 2, 3, 3, 2, 3; Measure 3: 3, 3, 2, 3; Measure 4: 2, 3, 3, 2, 3; Measure 5: 3, 3, 2, 3.

93

T
A
B

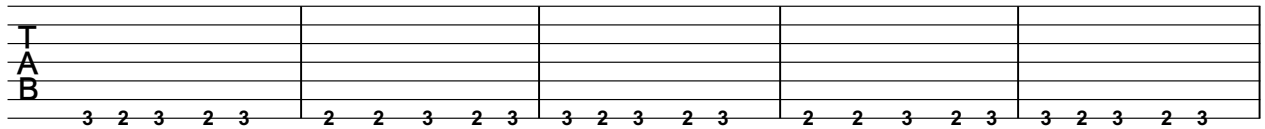


2 3 3 2 3 | 3 3 2 3 | 2 3 3 2 3 | 3 3 2 3 | 2 2 3 2 3

Detailed description: This is the ninth guitar tab system. It consists of six horizontal lines representing guitar strings. The notes are indicated by numbers 2-3 below the lines. The system is divided into five measures by vertical bar lines. The notes in each measure are: Measure 1: 2, 3, 3, 2, 3; Measure 2: 3, 3, 2, 3; Measure 3: 2, 3, 3, 2, 3; Measure 4: 3, 3, 2, 3; Measure 5: 2, 2, 3, 2, 3.

98

T
A
B



3 2 3 2 3 | 2 2 3 2 3 | 3 2 3 2 3 | 2 2 3 2 3 | 3 2 3 2 3

Detailed description: This is the tenth guitar tab system. It consists of six horizontal lines representing guitar strings. The notes are indicated by numbers 2-3 below the lines. The system is divided into five measures by vertical bar lines. The notes in each measure are: Measure 1: 3, 2, 3, 2, 3; Measure 2: 2, 2, 3, 2, 3; Measure 3: 3, 2, 3, 2, 3; Measure 4: 2, 2, 3, 2, 3; Measure 5: 3, 2, 3, 2, 3.

T
A
B

2 2 3 2 3 3 2 3 2 3 3 3 2 3 3 3 2 3 3 2 3 3 2 3

108

T
A
B

3 3 2 3 3 2 3 3 2 3 3 3 2 3 3 2 3 3 2 3 3 3 2 3

113

T
A
B

3 2 3 3 2 3 3 3 2 3 3 2 3 3 2 3 3 3 2 3 3 2 3 3 2 3

118

T
A
B

3 3 2 3 3 2 3 3 2 3 3 3 2 3 3 2 3 3 2 3 3 3 2 3

123

T
A
B

3 2 3 3 2 3 3 3 2 3 3 2 3 3 2 3 3 2 3 3 2 3 3 2 3

128

T
A
B

3 3 2 3 3 2 3 3 1 1 0 5 5 4 5 1 1 0 5 5 4 5 1

134

T
A
B

1 0 5 5 4 5 1 1 0 5 5 4 5 2 3 3 3 2 3 3 2 3 3 2 3

140

T
A
B

3 3 2 3 3 2 3 3 2 3 3 3 2 3 3 2 3 3 2 3 3 3 2 3

145

T
A
B

3 2 3 3 2 3 3 3 2 3 3 2 3 3 2 3 3 2 3 3 2 3 3 2 3

150

T
A
B

3 3 2 3 3 2 3 3 2 3 3 3 2 3 3 2 2 2 2 2

V.S.

T
A
B

2 2 2 3 | 2 4 3 | 3 3 2 | 4 3 3 | 3 3 3 | 2 4 3

161

T
A
B

3 3 2 | 4 3 3 | 3 3 3 | 2 4 3 | 3 3 2 | 4 3 3

167

T
A
B

3 3 3 | 2 4 3 | 3 3 2 | 4 3 3 | 3 3 3 | 3 3 3 3

173

T
A
B

2 3 | 3 3 3 3 | 2 3 | 3 3 3 3 | 2 3 | 3 3 3 3 | 2 3

180

T
A
B

3 3 3 3 | 2 3 | 3 3 3 3 | 2 3 | 3 3 3 3 | 2 3

186

T
A
B

3 3 3 3 | 2 3 | 3 3 3 3 | 2 3 | 3 3 3 3 | 2 3

192

T
A
B

3 3 3 3 | 2 3 | 3 3 3 3 | 2 3 | 3 3 3 3 | 2 3

198

T
A
B

3 3 3 3 | 2 3 | 3 3 3 3 | 2 3 | 3 3 3 3 | 3

♩ = 256,410248



6



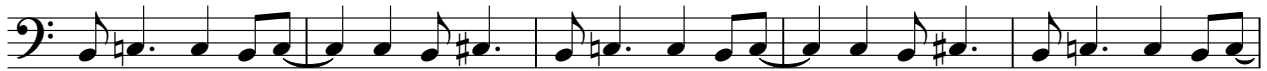
11



16



21



26



31



36



41



46



V.S.

103



108



113



118



123



128



134



139



144



149



V.S.

