

DV - Underworld Field

♩ = 86,000053

Suggestions? 

Composed by: 

M. Takenaka, N. Komatsu, T. Sekido, Mercado Inc. Staff 

Questions? 

Comments? 

Concerns? 

(Willow) 

Underworld Field 

Sequenced by: 

Robert Aaron Eason 



2 ♩ = 85,500046

Suggestions? 


Composed by: 


Questions? 


Comments? 


Underworld Field 


Sequenced by: 


Composed by: 


M. Takenaka, N. Komatsu, T. Sekido, Mercado Inc. Staff 

Questions? 


Comments? 


(Willow) 


Underworld Field 

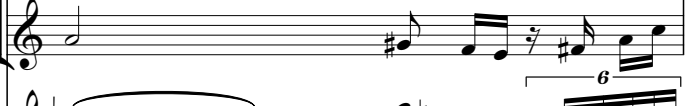
Sequenced by: 





Composed by: 

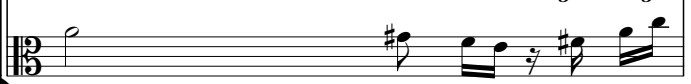
M. Takenaka, N. Komatsu, T. Sekido, Mercado Inc. Staff 

Questions? 

Comments? 

(Willow) 

Underworld Field 

Sequenced by: 

Suggestions? 

Composed by: 

M. Takenaka, N. Komatsu, T. Sekido, Mercado Inc. Staff 

Questions? 

Comments? 

(Willow) 

Underworld Field 

Sequenced by: 



Suggestions? 

Composed by: 

M. Takenaka, N. Komatsu, T. Sekido, Mercado Inc. Staff 

Questions? 

Comments? 

(Willow) 

Underworld Field 

Sequenced by: 

7

Suggestions?

M. Takenaka, N. Komatsu, T. Sekido, Mercado Inc. Staff

Questions?

Comments?

Concerns?

Underworld Field

Sequenced by:

Robert Aaron Eason



8

Suggestions?

M. Takenaka, N. Komatsu, T. Sekido, Mercado Inc. Staff

Questions?

Comments?

Concerns?

Underworld Field

Sequenced by:

Robert Aaron Eason

9

Suggestions?

M. Takenaka, N. Komatsu, T. Sekido, Mercado Inc. Staff

Questions?

Comments?

Concerns?

Underworld Field

Sequenced by:

Robert Aaron Eason



10

Suggestions?

M. Takenaka, N. Komatsu, T. Sekido, Mercado Inc. Staff

Questions?

Comments?

Concerns?

Underworld Field

Sequenced by:

Robert Aaron Eason

Suggestions? 

Composed by: 

Questions? 

Comments? 

Underworld Field 

Sequenced by: 



Suggestions? 

Composed by: 

M. Takenaka, N. Komatsu, T. Sekido, Mercado Inc. Staff 

Questions? 

Comments? 

(Willow) 

Underworld Field 

Sequenced by: 

Composed by:

M. Takenaka, N. Komatsu, T. Sekido, Mercado Inc. Staff

Questions?

Comments?

(Willow)

Underworld Field

Sequenced by:



Suggestions?

Composed by:

M. Takenaka, N. Komatsu, T. Sekido, Mercado Inc. Staff

Questions?

Comments?

(Willow)

Underworld Field

Sequenced by:

Suggestions? 

Composed by: 

M. Takenaka, N. Komatsu, T. Sekido, Mercado Inc. Staff 

Questions? 

Comments? 

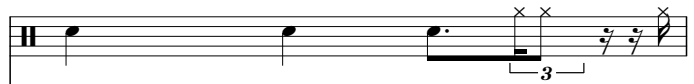
(Willow) 

Underworld Field 

Sequenced by: 



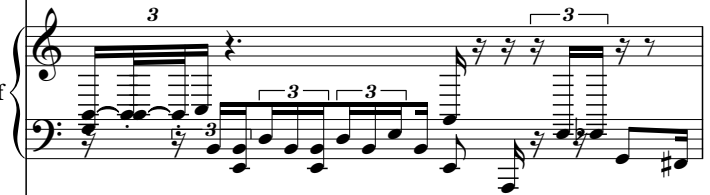
Suggestions?



Composed by:



M. Takenaka, N. Komatsu, T. Sekido, Mercado Inc. Staff



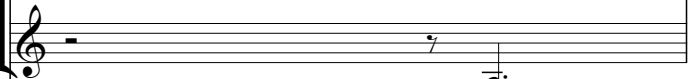
Questions?



Comments?



Concerns?



(Willow)



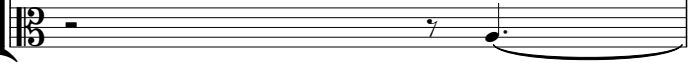
Underworld Field




Sequenced by:





Robert Aaron Eason

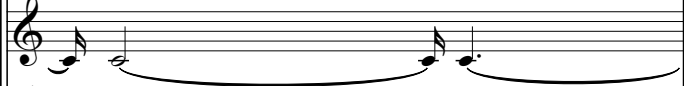



17


Suggestions? 


M. Takenaka, N. Komatsu, T. Sekido, Mercado Inc. Staff 


Questions? 

Comments? 

Concerns? 


Underworld Field 


Sequenced by: 


Robert Aaron Eason 

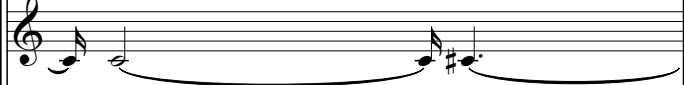



18

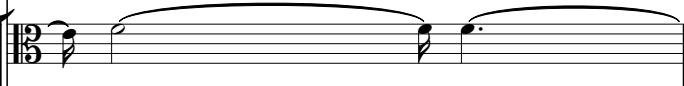
Suggestions? 


M. Takenaka, N. Komatsu, T. Sekido, Mercado Inc. Staff 

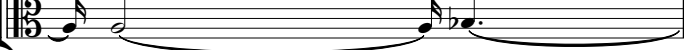
Questions? 

Comments? 

Concerns? 

Underworld Field 

Sequenced by: 

Robert Aaron Eason 

19

M. Takenaka, N. Komatsu, T. Sekido, Mercado Inc. Staff

Suggestions?

Questions?

Comments?

Concerns?

Underworld Field

Sequenced by:

Robert Aaron Eason



20

M. Takenaka, N. Komatsu, T. Sekido, Mercado Inc. Staff

Suggestions?

Questions?

Comments?

Concerns?

Underworld Field

Sequenced by:

Robert Aaron Eason

Suggestions?

# DV - Underworld Field

♩ = 86,000053   ♩ = 85,500046

2

13/16

7

3 3 3 3 3 3 3

10

3 3 3

15

3 3 3 3

18

3 3 3 3 3 3

Composed by: DV - Underworld Field

♩ = 86,000053    ♩ = 85,500046



DV - Underworld Field  
M. Takenaka, N. Komatsu, T. Sekido, Mercado Inc. Staff

♩ = 86,000053 ♩ = 85,500046

4

5

6

7

9

2

M. Takenaka, N. Komatsu, T. Sekido, Mercado Inc. Staff

12

Musical notation for measures 12 and 13 in bass clef. Measure 12 contains a triplet of eighth notes, followed by a sixteenth note, and then a sixteenth-note triplet. Measure 13 contains a sixteenth-note triplet, followed by a sixteenth note, and then a sixteenth-note triplet. Both measures feature sixteenth-note runs with sixteenth-note triplets.

14

Musical notation for measures 14 and 15 in bass clef. Measure 14 contains a sixteenth-note triplet, followed by a sixteenth note, and then a sixteenth-note triplet. Measure 15 contains a sixteenth-note triplet, followed by a sixteenth note, and then a sixteenth-note triplet. Both measures feature sixteenth-note runs with sixteenth-note triplets.

15

Musical notation for measures 15 and 16 in bass clef. Measure 15 contains a sixteenth-note triplet, followed by a sixteenth note, and then a sixteenth-note triplet. Measure 16 contains a sixteenth-note triplet, followed by a sixteenth note, and then a sixteenth-note triplet. Both measures feature sixteenth-note runs with sixteenth-note triplets.

16

Musical notation for measures 16 and 17 in grand staff. Measure 16 contains a triplet of eighth notes in the right hand, followed by a triplet of eighth notes in the left hand. Measure 17 contains a triplet of eighth notes in the right hand, followed by a triplet of eighth notes in the left hand. Both measures feature triplet patterns in both hands.

18

Musical notation for measures 18 and 19 in bass clef. Measure 18 contains a sixteenth-note triplet, followed by a sixteenth note, and then a sixteenth-note triplet. Measure 19 contains a sixteenth-note triplet, followed by a sixteenth note, and then a sixteenth-note triplet. Both measures feature sixteenth-note runs with sixteenth-note triplets.

19

Musical notation for measures 19 and 20 in bass clef. Measure 19 contains a sixteenth-note triplet, followed by a sixteenth note, and then a sixteenth-note triplet. Measure 20 contains a sixteenth-note triplet, followed by a sixteenth note, and then a sixteenth-note triplet. Both measures feature sixteenth-note runs with sixteenth-note triplets.

Questions?

# DV - Underworld Field

♩ = 86,000053                      ♩ = 85,500046



4



7



11



14



17






Comments?

# DV - Underworld Field

♩ = 86,000053      ♩ = 85,500046



4



8



12



15



18



Concerns?

# DV - Underworld Field

♩ = 86,000053 ♩ = 85,500046

4

9

5

17

(Willow)

DV - Underworld Field

♩ = 86,000053 ♩ = 85,500046

13/16 16/16 6

5

5 5

13

3 3


15

4

Underworld Field

DV - Underworld Field


♩ = 86,000053      ♩ = 85,500046



4



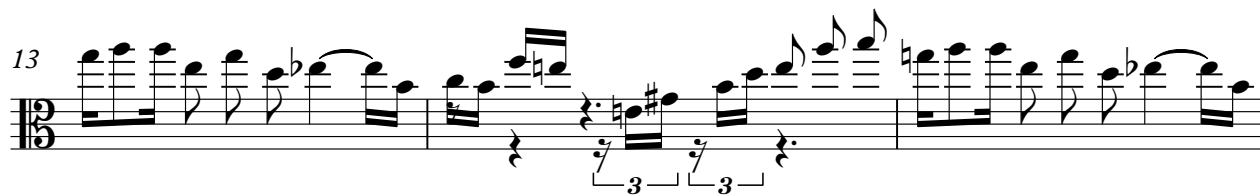
7



11



13



16



18



Sequenced by:

# DV - Underworld Field

$\text{♩} = 86,000053$   $\text{♩} = 85,500046$



4



8



12



15



18



♩ = 86,000053 = 85,500046

4

Musical staff with treble clef, key signature of one flat, and 16/16 time signature. It shows a whole rest, a whole note chord, and a melodic line of eighth notes.

10

5

Musical staff with treble clef, key signature of one flat, and 16/16 time signature. It shows a melodic line of eighth notes, a whole note chord, a whole rest, and a melodic line of eighth notes.

18

Musical staff with treble clef, key signature of one flat, and 16/16 time signature. It shows a melodic line of eighth notes.