

# E Tape - E Tape Life

♩ = 140,000137

Track 1

Rummut

Track 3

Track 2

♩ = 140,000137

3

Track 1

Rummut

Track 3

Track 2



11

Track 1

Rummut

Track 3

Track 2

13

Track 1

Rummut

Track 3

Track 2

15

Track 1

Rummut

Track 3

Track 2

17

Track 1

Rummut

Track 3

Track 2

19

Track 1

Rummut

Track 3

Track 2

21

Track 1

Rummut

Track 3

Track 2

23

Track 1

Rummut

Track 3

Track 2

Track 4

25

Track 1

Rummut

Track 3

Track 2

27

Track 1

Rummut

Track 3

Track 2

29

Track 1

Rummut

Track 3

Track 2

31

Track 1

Rummut

Track 3

Track 2

33

Track 1

Rummut

Track 3

Track 2

40

Track 1

48

Track 1

56

Track 1

64

Track 1

72

Track 1

80

Track 1

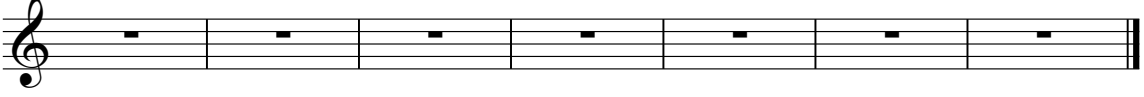
88

Track 1

8

95

Track 1



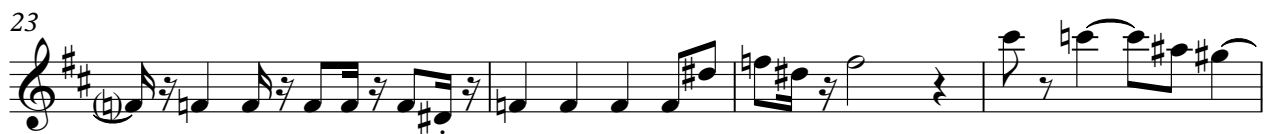
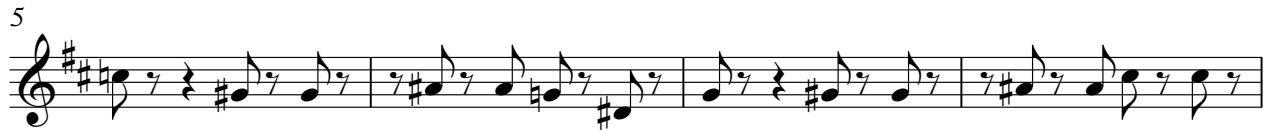
A musical staff in treble clef containing seven measures, each with a whole rest. The staff is divided into seven equal measures by vertical bar lines. The first measure starts with a treble clef. The staff ends with a double bar line.



# E Tape - E Tape Life

## Track 1

♩ = 140,000137



Rummut

E Tape - E Tape Life

♩ = 140,000137

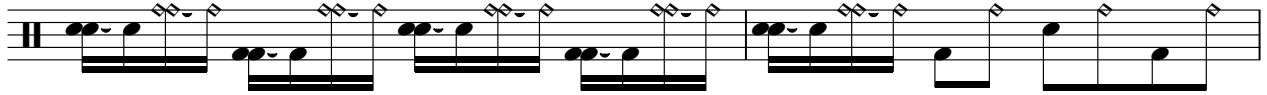


V.S.

2

# Rummut

27



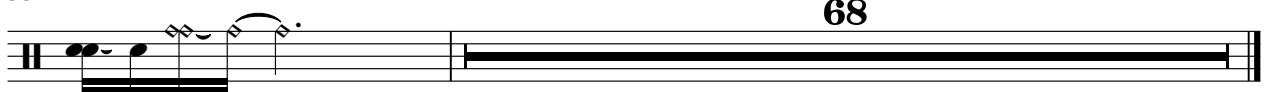
29



31



33



68

Track 3

E Tape - E Tape Life

♩ = 140,000137

5

9

13

17

21

25

29

32

68

E Tape - E Tape Life

Track 2

♩ = 140,000137

4

7

12

18

21

24

27

30

33

68

Track 4

E Tape - E Tape Life

♩ = 140,000137

**23** **77**