

Eddie Cochran - C`mon Everybody

♩ = 181,000931
Drum

Drum

Tambourin

Ac Guitar

El Bass

♩ = 181,000931
Melody

(c)1993HM

(c)1993HM

5

Drum

Tambourin

Ac Guitar

El Bass

8

Drum

Tambourin

Ac Guitar

El Bass

Ac Guitar TAB:
 T: 0 7 7 7 7 7 7 7 | 4 4 4 4 2 2 2 2
 A: 6 6 6 6 6 6 6 6 | 4 2 4 4 4 2 2 2
 B: 2 7 2 2 7 2 2 7 | 1 1 4 4 4 2 2 2
 | 2 2 6 9 | 0 0

10

Drum

Tambourin

Ac Guitar

El Bass

Ac Guitar TAB:
 T: 2 2 | 2 2 2 2 2 2 2 2
 A: 1 1 | 1 1 1 1 1 1 1 1
 B: 2 2 4 4 2 6 | 2 2 2 2 2 2 2 2

12

Drum

Tambourin

Ac Guitar

El Bass

Ac Guitar TAB:
 T: 0 7 7 7 7 7 7 7 | 4 4 4 4 2 2 2 2
 A: 6 6 6 6 6 6 6 6 | 4 2 4 4 4 2 2 2
 B: 2 7 2 2 7 2 2 7 | 1 1 4 4 4 2 2 2
 | 2 2 6 9 | 0 0

14

Drum

Tambourin

Ac Guitar

El Bass

Melody

Detailed description: This system covers measures 14, 15, and 16. The Drum part features a complex rhythmic pattern with eighth and sixteenth notes. The Tambourin part has a steady eighth-note accompaniment. The Ac Guitar part is shown with a treble clef and a 2/2 time signature, with fret numbers (2, 4, 4, 2, 6, 2, 2, 2, 2, 1, 2, 2, 2, 1, 2, 2, 2) written below the staff. The El Bass part is in a bass clef, playing a rhythmic line with eighth notes and some accidentals. The Melody part is in a treble clef, featuring a melodic line with eighth notes and a few accidentals.

17

Drum

Tambourin

Ac Guitar

El Bass

Melody

Detailed description: This system covers measures 17, 18, and 19. The Drum part continues with a similar rhythmic pattern. The Tambourin part maintains its eighth-note accompaniment. The Ac Guitar part is shown with a treble clef and a 2/2 time signature, with fret numbers (1, 2, 2, 2, 1, 2, 2, 2, 2, 1, 2, 2, 2, 1, 2, 2, 2) written below the staff. The El Bass part continues with its rhythmic line. The Melody part is in a treble clef, showing a melodic line with eighth notes and some accidentals.

20

Drum

Tambourin

Ac Guitar

El Bass

Melody

Detailed description: This block contains the musical notation for measures 20, 21, and 22. The Drum part features a pattern of quarter notes and eighth notes. The Tambourin part consists of a steady eighth-note accompaniment. The Ac Guitar part is shown as a TAB with fret numbers: 1 2 2 2 1 2 2 2 in the first measure, 1 2 2 1 2 2 2 2 in the second, and 2 1 2 2 1 2 2 2 in the third. The El Bass part plays a consistent eighth-note bass line. The Melody part has a few notes in measure 20, followed by rests in measures 21 and 22.

23

Drum

Tambourin

Ac Guitar

El Bass

Melody

Detailed description: This block contains the musical notation for measures 23, 24, and 25. The Drum part continues with a similar pattern. The Tambourin part remains a steady eighth-note accompaniment. The Ac Guitar part has a complex TAB: 7 2 7 7 7 2 2 7 2 in the first measure, 4 4 4 4 4 4 4 4 in the second, and 2 2 2 2 2 2 2 2 in the third. The El Bass part continues with an eighth-note bass line. The Melody part has a few notes in measure 23, rests in measure 24, and more notes in measure 25.

36

Drum

Tambourin

Ac Guitar

El Bass

Melody

Ac Guitar fretboard: T 2/2, A 1, B 2 2 2 2 1 2 2 2. Tab: 2 2 2 2 1 2 2 2 | 1 2 2 2 1 2 2 2

39

Drum

Tambourin

Ac Guitar

El Bass

Melody

Ac Guitar fretboard: T, A, B. Tab: 1 2 2 2 1 2 2 2 | 2 1 2 2 1 2 2 2 | 1 2 2 2 1 2 2 2

42

Drum

Tambourin

Ac Guitar

El Bass

Melody

1 2 2 2 1 2 2 2 | 1 2 2 1 2 2 2 2 | 2 1 2 2 1 2 2 2

45

Drum

Tambourin

Ac Guitar

El Bass

Melody

7 2 7 7 2 2 7 2 | 4 4 4 4 4 4 4 4 | 2 2 2 2 2 2 2 2
7 4 7 0 4 4 7 4 | 0 0 0 0 0 0 0 0 | 4 4 4 4 4 4 4 4
6 2 6 6 2 2 6 2 | 4 4 4 4 4 4 4 4 | 2 2 2 2 2 2 2 2
7 2 7 2 2 2 7 2 | 1 1 1 1 1 1 1 1 | 2 2 2 2 2 2 2 2
0 0 0 0 2 2 0 0 | 2 2 0 0 2 2 0 0

48

Drum

Tambourin

Ac Guitar

El Bass

Melody

TAB: 4 4 4 4 4 4 4 2, 0 0 0 0 0 0 0 2, 1 1 1 1 1 1 1 0, 2 2 2 2 2 2 2 2

51

Drum

Tambourin

Ac Guitar

El Bass

TAB: 2 2 2 2 2 2 2 2 2 7 7 7 7 7 7 4 4 4 2 2 2 2, 2 2 2 2 2 2 2 2 0 7 7 7 7 7 7 0 2 0 4 4 2 2 2 2, 1 1 1 1 1 1 1 1 6 6 6 6 6 6 4 2 4 4 4 2 2 2 2, 2 2 2 2 2 2 2 2 2 7 2 2 7 2 2 7 1 1 4 4 4 2 2 2 2

58

Drum

Tambourin

Ac Guitar

El Bass

Melody

2/2

TAB

2 2 2 2 1 2 2 2 1 2 2 2 1 2 2 2

61

Drum

Tambourin

Ac Guitar

El Bass

Melody

2/2

TAB

1 2 2 2 1 2 2 2 2 1 2 2 2 1 2 2 2

64

Drum

Tambourin

Ac Guitar

El Bass

Melody

Detailed description: This block contains the musical notation for measures 64, 65, and 66. The Drum part features a pattern of quarter notes and eighth notes. The Tambourin part consists of a steady eighth-note accompaniment. The Ac Guitar part is shown with TAB notation and fret numbers: 1 2 2 2 1 2 2 2 in the first measure, 1 2 2 1 2 2 2 2 in the second, and 2 1 2 2 1 2 2 2 in the third. The El Bass part plays a consistent eighth-note bass line. The Melody part begins with a quarter note G#4, followed by quarter notes A4 and B4, then a quarter rest, and finally a quarter note G#4.

67

Drum

Tambourin

Ac Guitar

El Bass

Melody

Detailed description: This block contains the musical notation for measures 67, 68, and 69. The Drum part continues with a similar pattern to the previous measures. The Tambourin part remains a steady eighth-note accompaniment. The Ac Guitar part uses TAB notation with fret numbers: 7 2 7 7 7 2 2 7 2 in the first measure, 4 4 4 4 4 4 4 4 in the second, and 2 2 2 2 2 2 2 2 in the third. The El Bass part continues with an eighth-note bass line. The Melody part starts with a quarter note G#4, followed by quarter notes A4 and B4, then a quarter rest, and finally a quarter note G#4.

70

Drum

Tambourin

Ac Guitar

El Bass

Melody

TAB

4	4	4	4	4	4	4	4	2
0	0	0	0	0	0	0	0	2
4	4	4	4	4	4	4	0	0
1	1	1	1	1	1	1	0	2
2			2			2	0	2

73

Drum

Tambourin

Ac Guitar

El Bass

TAB

2	2	2	2	2	2	2	2	2	7	7	7	7	7	7	7	4	4	4	4	2	2	2	2	
2	2	2	2	2	2	2	2	2	0	7	7	7	7	7	7	0	2	0	0	0	0	4	4	4
1	1	1	1	1	1	1	1	1	6	6	6	6	6	6	6	4	2	4	4	4	2	2	2	
2	2	2	2	2	2	2	2	2	2	7	2	2	7	2	2	7	1	1	4	4	4	2	2	
2			2			2			2			2			2	2	2	6	4	4	0	0		

88

Drum

Tambourin

Ac Guitar

T	2		
A	2	2	
B	1	1	
	2		

El Bass

Eddie Cochran - C`mon Everybody

Drum

♩ = 181,000931

Drum

3



V.S.

54



58



63



68



74



79



84



86



Tambourin

Eddie Cochran - C`mon Everybody

♩ = 181,000931
Tambourin

4/4

8

12

16

20

24

29

33

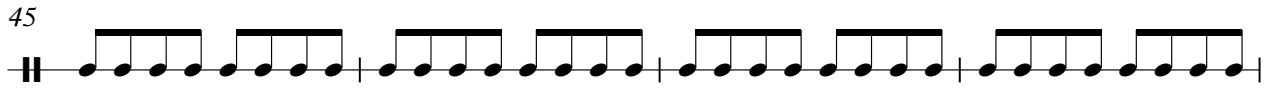
37

41

Detailed description: The image shows a musical score for a tambourin part in 4/4 time. The tempo is marked as ♩ = 181,000931. The score consists of ten staves of music. The first staff begins with a 4/4 time signature and a thick black bar for the first measure. The subsequent staves contain a continuous eighth-note pattern. There are some rests and a 7-measure rest in the later staves. The staves are numbered 4, 8, 12, 16, 20, 24, 29, 33, 37, and 41.

Tambourin

45



49



54



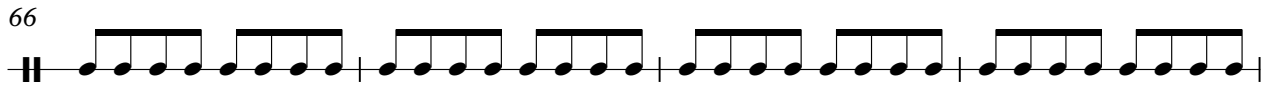
58



62



66



70




75



79



83



Tambourin

86



2
29

Ac Guitar

T	2	2	2	2	2	2	2	2	2	2	7	7	7	7	7	7	7	7	4	4	4	4	2	2	2	2
A	2	2	2	2	2	2	2	2	2	2	0	7	7	0	7	7	0	7	0	2	0	0	0	4	4	4
B	2	2	2	2	2	2	2	2	2	2	2	7	2	2	7	2	2	7	1	1	4	4	4	2	2	2
	2	2	2	2	2	2	2	2	2	2	2	2	2	2	2	2	2	2	2	2	6	9	0	0	2	2

32

T	2	2	2	2	2	2	2	2	2	2	2	7	7	7	7	7	7	7	0	7	7	0	7	7	0	7
A	1	1	1	1	1	1	1	1	1	1	1	6	6	6	6	6	6	6	6	6	6	6	6	6	6	6
B	2	2	2	2	2	2	2	2	2	2	2	2	2	2	2	2	2	2	2	2	2	2	2	2	2	2
	2	2	2	2	2	2	2	2	2	2	2	2	2	2	2	2	2	2	2	2	2	2	2	2	2	2

35

T	4	0	2	4	4	4	2	2	2	2	2	2	2	2	2	2	2	2	2	2	2	2	2	2	2	2
A	4	4	2	4	4	4	4	4	4	4	4	4	4	4	4	4	4	4	4	4	4	4	4	4	4	4
B	1	1	4	4	4	4	2	2	2	2	2	2	2	2	2	2	2	2	2	2	2	2	2	2	2	2
	2	2	6	4	4	4	0	0	2	2	2	2	2	2	2	2	2	2	2	2	2	2	2	2	2	2

38

T																										
A																										
B	1	2	2	2	1	2	2	2	1	2	2	2	2	2	1	2	2	2	2	1	2	2	2	2	1	2
	1	2	2	2	1	2	2	2	1	2	2	2	2	2	1	2	2	2	2	1	2	2	2	2	1	2

42

T																										
A																										
B	1	2	2	2	1	2	2	2	1	2	2	2	2	2	2	1	2	2	2	2	1	2	2	2	2	2
	1	2	2	2	1	2	2	2	1	2	2	2	2	2	2	1	2	2	2	2	1	2	2	2	2	2

46

T	4	4	4	4	4	4	4	4	4	2	2	2	2	2	2	2	2	2	4	4	4	4	4	4	4	2
A	0	0	0	0	0	0	0	0	0	4	4	4	4	4	4	4	4	4	0	0	0	0	0	0	0	0
B	1	1	1	1	1	1	1	1	1	2	2	2	2	2	2	2	2	2	4	4	4	4	4	4	4	0
	2	2	2	2	2	2	2	2	2	0	0	0	0	0	0	0	0	0	2	2	2	2	2	2	2	2

50

T	2	2	2	2	2	2	2	2	2	2	7	7	7	7	7	7	7	7	4	4	4	4	2	2	2	2
A	1	1	1	1	1	1	1	1	1	1	6	6	6	6	6	6	6	6	4	2	4	4	4	4	4	4
B	2	2	2	2	2	2	2	2	2	2	2	7	2	2	7	2	2	7	1	1	4	4	4	2	2	2
	2	2	2	2	2	2	2	2	2	2	2	2	2	2	2	2	2	2	2	2	6	9	0	0	2	2

54

T	2	2	2	2	2	2	2	2	2	2	2	7	7	7	7	7	7	7	0	7	7	0	7	7	0	7
A	1	1	1	1	1	1	1	1	1	1	1	6	6	6	6	6	6	6	6	6	6	6	6	6	6	6
B	2	2	2	2	2	2	2	2	2	2	2	2	2	2	2	2	2	2	2	2	2	2	2	2	2	2
	2	2	2	2	2	2	2	2	2	2	2	2	2	2	2	2	2	2	2	2	2	2	2	2	2	2

57

T	4	0	2	4	4	4	2	2	2	2	2	2	2	2	2	2	2	2	2	2	2	2	2	2	2	2
A	4	4	2	4	4	4	4	4	4	4	4	4	4	4	4	4	4	4	4	4	4	4	4	4	4	4
B	1	1	4	4	4	4	2	2	2	2	2	2	2	2	2	2	2	2	2	2	2	2	2	2	2	2
	2	2	6	4	4	4	0	0	2	2	2	2	2	2	2	2	2	2	2	2	2	2	2	2	2	2

60

T																										
A																										
B	1	2	2	2	1	2	2	2	1	2	2	2	2	2	1	2	2	2	2	1	2	2	2	2	1	2
	1	2	2	2	1	2	2	2	1	2	2	2	2	2	1	2	2	2	2	1	2	2	2	2	1	2

Eddie Cochran - C`mon Everybody

El Bass

♩ = 181,000931

El Bass 2



6



10



14



18



22



25



29



33



37



41



45



49



54



58



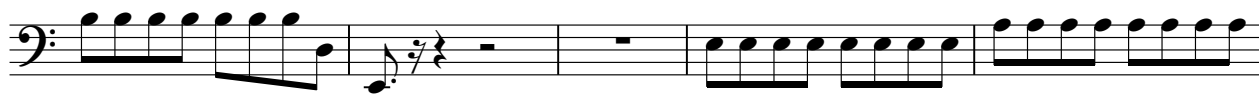
62



66



70



75



79



83



86



Eddie Cochran - C`mon Everybody

Melody

♩ = 181,000931
Melody **13**

17

22

27 **7**

37

42

47 **7**

58

63

68

2

Melody

71

17

(c)1993HM

Eddie Cochran - C`mon Everybody

♩ = 181,000931
(c)1993HM

88