

# Simple plan - Perfect

♩ = 82,000038

Drum Track

Distortion Guitar

Clean Guitar

Bass Guitar

4

Drum Track

Distortion Guitar

Clean Guitar

Bass Guitar

6

Drum Track

Distortion Guitar

Clean Guitar

Bass Guitar

8

Drum Track

Distortion Guitar

Clean Guitar

Bass Guitar

10

Drum Track

Clean Guitar

Bass Guitar

12

Drum Track

Clean Guitar

Bass Guitar

14

Drum Track

Clean Guitar

Bass Guitar

17 3

Drum Track

Distortion Guitar

T	4	4	4	4	4	4	4	4	4	4	4	4	4
A	3	3	3	3	3	3	3	3	3	3	3	3	3
B	1	3	3	3	1	4	4	8	8	8	8	8	8

Bass Guitar

20

Drum Track

Distortion Guitar

T	4	4	4	4	4	4	4	4	4	4	4	4	4	4	4	4	4	4	4
A	3	3	3	3	3	3	3	3	3	3	3	3	3	3	3	3	3	3	3
B	1	1	1	1	1	1	1	1	1	1	1	1	1	1	1	1	1	1	1

Bass Guitar

22

Drum Track

Distortion Guitar

T	4	4	4	4	4	4	4	4	4	4	4	4	4	4	4	4	4	4	4
A	3	3	3	3	3	3	3	3	3	3	3	3	3	3	3	3	3	3	3
B	1	1	1	1	1	1	1	1	1	1	1	1	1	1	1	1	1	1	1

Clean Guitar

Bass Guitar

25

Clean Guitar

Bass Guitar

28

Drum Track

Clean Guitar

Bass Guitar

31

Drum Track

Distortion Guitar

Clean Guitar

Bass Guitar

33

Drum Track

Distortion Guitar

Clean Guitar

Bass Guitar

35 5

Drum Track

Distortion Guitar

Clean Guitar

Bass Guitar

37

Drum Track

Clean Guitar

Bass Guitar

39

Drum Track

Clean Guitar

Bass Guitar

41

Drum Track

Clean Guitar

Bass Guitar

43

Drum Track

Distortion Guitar

Clean Guitar

Bass Guitar

46

Drum Track

Distortion Guitar

Bass Guitar

48

Drum Track

Distortion Guitar

Bass Guitar

50

Drum Track

Distortion Guitar

Clean Guitar

Bass Guitar

The image displays a musical score for measures 43 through 50. It is organized into four systems, each corresponding to a measure. Each system contains four staves: Drum Track, Distortion Guitar, Clean Guitar, and Bass Guitar. The Drum Track uses a standard drum notation with 'x' marks for cymbals and various note values for other drums. The Distortion Guitar staff includes both a standard musical notation and a guitar tablature with fret numbers (1-5) and picking patterns (T, A, B). The Clean Guitar staff shows a melodic line in treble clef with a key signature of one flat. The Bass Guitar staff shows a bass line in bass clef with a key signature of one flat. Measure 43 features a complex drum pattern and a distorted guitar riff. Measure 46 has a steady drum pattern and a distorted guitar riff with a consistent picking pattern. Measure 48 continues the drum and distorted guitar patterns. Measure 50 shows a change in the drum pattern and the introduction of a clean guitar melody.

53

Drum Track

Clean Guitar

Bass Guitar

56

Drum Track

Clean Guitar

Bass Guitar

58

Drum Track

Distortion Guitar

Clean Guitar

Bass Guitar

T	1	1	1	1	1	1	1	1	1	1	1	1	3	3	3
A	1	1	1	1	1	1	1	1	1	1	1	1	3	3	3
B	4	4	4	4	4	4	4	4	4	4	4	4	1	1	1

60

Drum Track

Distortion Guitar

Clean Guitar

Bass Guitar

T										4			1	1	1	1	3	3	3							
A										3			1	1	1	1	3	3	3							
B	6	6	6	6	6	6	6	6	6	6	6	6	6	6	6	6	4	4	4	4	1	1	1	6	6	6

62

Drum Track

Distortion Guitar

Clean Guitar

Bass Guitar

Detailed description: This system covers measures 62 and 63. The Drum Track shows a 7/8 time signature with a pattern of eighth and sixteenth notes. The Distortion Guitar part features a TAB with fret numbers 6, 4, and 1. The Clean Guitar and Bass Guitar parts are written in standard notation with a key signature of one flat.

64

Drum Track

Distortion Guitar

Clean Guitar

Bass Guitar

Detailed description: This system covers measures 64 and 65. The Drum Track continues the 7/8 pattern. The Distortion Guitar TAB includes fret numbers 3, 1, and 4. The Clean Guitar and Bass Guitar parts continue in standard notation.

67

Clean Guitar

Detailed description: This block shows measure 67 for the Clean Guitar part, featuring a melodic line in standard notation with a key signature of one flat.

70

Drum Track

Distortion Guitar

Clean Guitar

Bass Guitar

Detailed description: This system covers measures 70 and 71. The Drum Track features a pattern of eighth notes with asterisks above. The Distortion Guitar TAB includes fret numbers 1, 3, 4, and 1. The Clean Guitar part is mostly silent, and the Bass Guitar part continues in standard notation.



73

Drum Track

Distortion Guitar

Bass Guitar

76

Drum Track

Distortion Guitar

Bass Guitar

79

Drum Track

Distortion Guitar

Bass Guitar

82

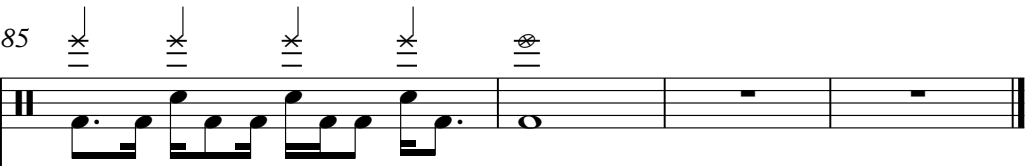
Drum Track

Distortion Guitar

Bass Guitar

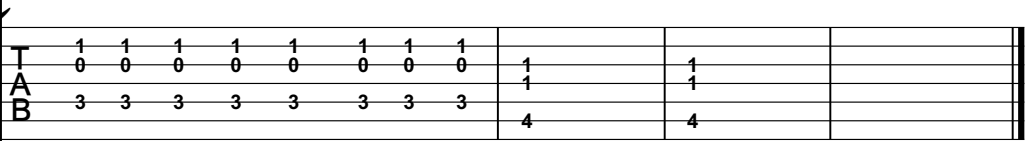
85

Drum Track



Distortion Guitar

T	1	1	1	1	1	1	1	1			
A	0	0	0	0	0	0	0	0	1	1	
B	3	3	3	3	3	3	3	3	4	4	



Bass Guitar



# Simple plan - Perfect

## Drum Track

♩ = 82,000038

4

7

10

13

17

20

23

3

The drum track is written on a single staff in 4/4 time. It begins with a 4-measure rest. The first six measures feature a consistent pattern of eighth notes on the bass drum and snare drum, with asterisks above the notes indicating specific drum sounds. Measures 7-9 continue this pattern. Measure 10 introduces a hi-hat pattern of eighth notes. Measures 11-12 feature a hi-hat pattern of eighth notes with a snare drum accompaniment. Measure 13 has a hi-hat pattern of eighth notes with a snare drum accompaniment, including a triplet of eighth notes. Measures 14-16 feature a hi-hat pattern of eighth notes with a snare drum accompaniment. Measure 17 has a hi-hat pattern of eighth notes with a snare drum accompaniment. Measure 18 features a hi-hat pattern of eighth notes with a snare drum accompaniment. Measure 19 has a hi-hat pattern of eighth notes with a snare drum accompaniment. Measure 20 features a hi-hat pattern of eighth notes with a snare drum accompaniment. Measure 21 has a hi-hat pattern of eighth notes with a snare drum accompaniment. Measure 22 features a hi-hat pattern of eighth notes with a snare drum accompaniment. Measure 23 has a hi-hat pattern of eighth notes with a snare drum accompaniment, ending with a 3-measure rest.

Drum Track

28

32

35

38

41

44

47

50

57

61

Drum Track

65

3

71

74

77

80

83

85

2



. . . . .

T	1 1 1 1 1 1 1 1	1 1 1 1 3 3 3	4	1 1 1 1 3 3 3
A	1 1 1 1 1 1 1 1	1 1 1 1 3 3 3	3	1 1 1 1 3 3 3
B	4 4 4 4 4 4 4 4	1 1 1 6	6 6 4 4 4 4	1 1 1 6
		6 6 6 6 6 6	6 6 6 6 6 6	6 6 6 6 6 6




62

. . . . .

T	4	1 1 1 1 1 1 1 3	3 3 3 3 3 3 3 1	1 1 1 1 1 1 1 1	1
A	3	1 1 1 1 1 1 1 3	3 3 3 3 3 3 3 1	1 1 1 1 1 1 1 1	1
B	6 6 4 4 4 4	1	1 1 1 1 1 1 1	4	4 4 4 4 4 4 4 4
	6 6 6 6 6 6	4 4 4 4 4 4 4 4			4

67

**3**

T		1 1 1 1 1 1 1 1	4 4 4 4 4 4 4 4	3 3 3 3 3 3 3 3
A		1 1 1 1 1 1 1 1	1 1 1 1 1 1 1 1	3 3 3 3 3 3 3 3
B		4 4 4 4 4 4 4 4		1 1 1 1 1 1 1 1

73

T	1 1 1 1 1 1 1 1	1 1 1 1 1 1 1 1	4 4 4 4 4 4 4 4	3 3 3 3 3 3 3 3
A	0 0 0 0 0 0 0 0	1 1 1 1 1 1 1 1	3 3 3 3 3 3 3 3	3 3 3 3 3 3 3 3
B	3 3 3 3 3 3 3 3	4 4 4 4 4 4 4 4	1 1 1 1 1 1 1 1	1 1 1 1 1 1 1 1

77

T	1 1 1 1 1 1 1 1	1 1 1 1 1 1 1 1	4 4 4 4 4 4 4 4	3 3 3 3 3 3 3 3
A	0 0 0 0 0 0 0 0	1 1 1 1 1 1 1 1	1 1 1 1 1 1 1 1	3 3 3 3 3 3 3 3
B	3 3 3 3 3 3 3 3	4 4 4 4 4 4 4 4		1 1 1 1 1 1 1 1

81

T	1 1 1 1 1 1 1 1	1 1 1 1 1 1 1 1	4 4 4 4 4 4 4 4	3 3 3 3 3 3 3 3
A	0 0 0 0 0 0 0 0	1 1 1 1 1 1 1 1	1 1 1 1 1 1 1 1	3 3 3 3 3 3 3 3
B	3 3 3 3 3 3 3 3	4 4 4 4 4 4 4 4		1 1 1 1 1 1 1 1

84

T	3 3 3 3 3 3 3 3	1 1 1 1 1 1 1 1		
A	3 3 3 3 3 3 3 3	0 0 0 0 0 0 0 0	1	1
B	1 1 1 1 1 1 1 1	3 3 3 3 3 3 3 3	4	4

♩ = 82,000038

5

7

10

14

25

30

33

35

38

V.S.

Detailed description: This is a guitar score for the song 'Simple plan - Perfect'. It is written for clean guitar in 4/4 time with a tempo of 82,000038. The key signature has one flat (B-flat). The score consists of ten staves of music. The first staff shows the beginning of the piece with a 7-measure rest. The second and third staves feature a complex, fast-paced rhythmic pattern with many beamed notes. The fourth staff continues with a similar pattern but includes some chordal textures. The fifth staff has a 7-measure rest. The sixth and seventh staves return to the complex rhythmic pattern. The eighth staff has a 7-measure rest. The ninth and tenth staves conclude the piece with a mix of rhythmic patterns and chordal textures.



42

7

53

58

62

65

69

18

# Simple plan - Perfect

Bass Guitar

♩ = 82,000038

4



7



13



20



24



30



34



40



47



51



V.S.

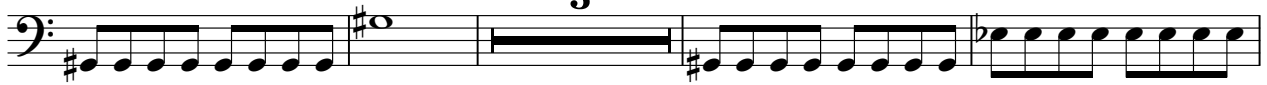
57



61



65



3

72



76



80



84

