

# Elis Regina - Romaria

♩ = 87,000023

Percussion

Kora

Kora

Fretless Electric Bass

Solo



5

Perc.

Kora

E. Bass

Solo

Cleiton Ferraz 0\*\*17 3463-1150 0\*\*17 9705-4266  
Cleiton Ferraz 0\*\*17 3463-1150 0\*\*17 9705-4266

8

Perc. 

Kora 

E. Bass 

Solo 



11

Perc. 

Kora 

E. Bass 

Solo 



15

Perc. 

Kora 

E. Bass 

Solo 

19

Perc.

Kora

E. Bass

Solo



23

Perc.

Kora

E. Bass

Solo



28

Fl.

Perc.

Kora

E. Bass

Solo

32

Fl.

Perc.

Kora

E. Bass

Solo



37

Perc.

Kora

Kora

E. Bass

Solo

42

Fl.

Perc.

Kora

Kora

E. Bass

Solo



45

Fl.

Perc.

Kora

E. Bass

Solo

49

Fl. Perc. Kora E. Bass Solo

This musical score covers measures 49 to 52. It features five staves: Flute (Fl.), Percussion (Perc.), Kora, Electric Bass (E. Bass), and Solo. The key signature has one sharp (F#). The Flute part consists of quarter notes and chords. The Percussion part has a steady rhythm of quarter notes with a circled 'x' above each note. The Kora part features a complex rhythmic pattern with eighth and sixteenth notes. The Electric Bass part plays a simple line of quarter notes. The Solo part consists of chords and chordal patterns.



53

Fl. Perc. Kora E. Bass Solo

This musical score covers measures 53 to 56. It features five staves: Flute (Fl.), Percussion (Perc.), Kora, Electric Bass (E. Bass), and Solo. The key signature has one sharp (F#). The Flute part has a long note in measure 53 that is tied through measures 54 and 55, ending with a rest in measure 56. The Percussion part has a steady rhythm of quarter notes with a circled 'x' above each note. The Kora part features a complex rhythmic pattern with eighth and sixteenth notes. The Electric Bass part plays a simple line of quarter notes. The Solo part consists of chords and chordal patterns.

57

Perc.

Kora

E. Bass

Solo



62

Fl.

Perc.

Kora

E. Bass

Solo

66

Fl.

Perc.

Kora

E. Bass

Solo



72

Perc.

J. Gtr.

Kora

Kora

E. Bass

Solo

Cleiton\*\*17 3463 1150



75

Perc.

J. Gtr.

Kora

E. Bass

Solo

0\*\*17 9705 4266



78

Perc.

J. Gtr.

Kora

E. Bass

Solo

81

Perc.

J. Gtr.

Kora

E. Bass

Solo



84

Perc.

Kora

Kora

E. Bass

Solo

88

Perc.

Kora

E. Bass

Q.

Solo



92

Perc.

Kora

E. Bass

Q.

Solo

95

Perc.

Kora

E. Bass

Q.

Solo



100

Perc.

Kora

E. Bass

Solo

104

Fl.

Perc.

Tub. B.

Kora

E. Bass

Solo

Detailed description: This system contains five staves of music for measures 104 through 108. The Flute staff (Fl.) has a whole rest in measure 104, followed by chords in measures 105-108. The Percussion staff (Perc.) shows a pattern of eighth notes with 'x' marks in measures 105-108. The Tub. B. staff (Tub. B.) has a whole rest in measure 104, followed by eighth notes in measures 105-108. The Kora staff (Kora) features a melodic line with eighth notes and rests in measures 104-108. The E. Bass staff (E. Bass) has a bass line with eighth notes in measures 104-108. The Solo staff (Solo) contains a complex chordal accompaniment with many accidentals in measures 104-108.



109

Perc.

Tub. B.

Kora

E. Bass

Solo

Detailed description: This system contains five staves of music for measures 109 through 113. The Percussion staff (Perc.) shows a pattern of eighth notes with 'x' marks in measures 109-113. The Tub. B. staff (Tub. B.) has eighth notes in measures 109-113. The Kora staff (Kora) features a melodic line with eighth notes and rests in measures 109-113. The E. Bass staff (E. Bass) has a bass line with eighth notes in measures 109-113. The Solo staff (Solo) contains a complex chordal accompaniment with many accidentals in measures 109-113.

113

Fl.

Perc.

Tub. B.

Kora

E. Bass

Q.

Solo



117

Tub. B.

Q.

Flute

Elis Regina - Romaria

♩ = 87,000023

30 9

45

45

55

8

68

37

108

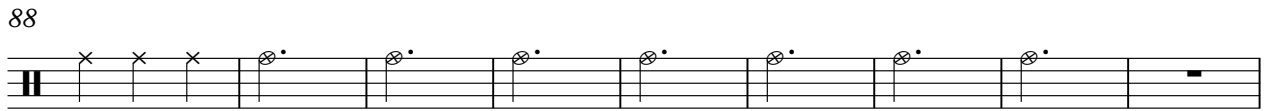
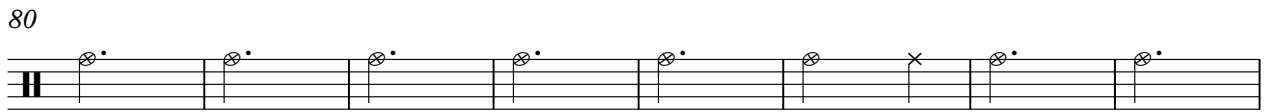
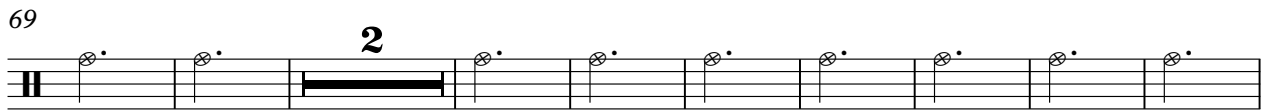
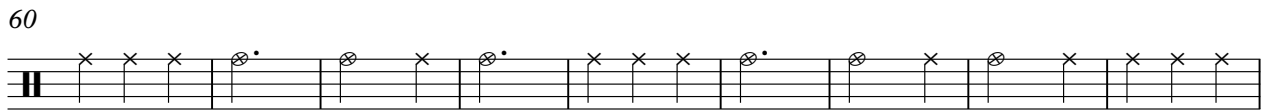
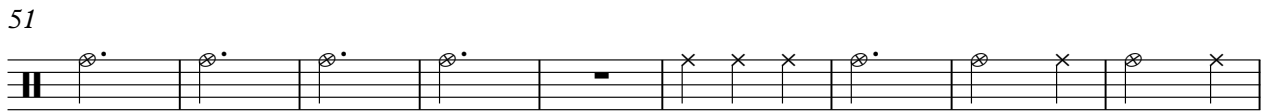
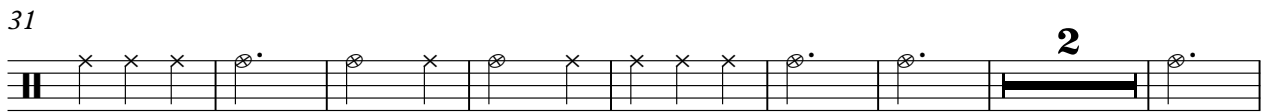
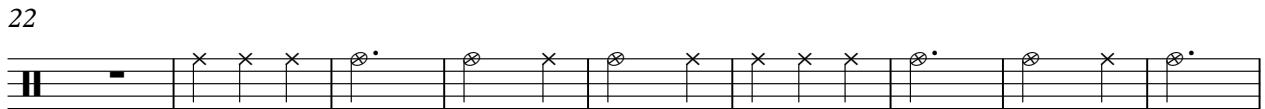
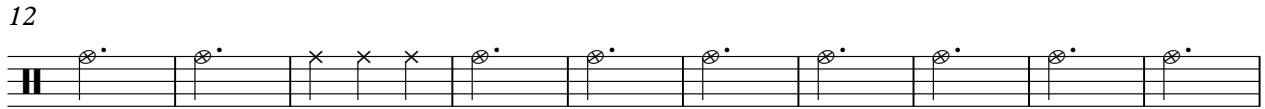
4 5

Cleiton Ferraz 0\*\*17 3463-1150 0\*\*17 9705-4266  
Cleiton Ferraz 0\*\*17 3463-1150 0\*\*17 9705-4266

# Elis Regina - Romaria

## Percussion

♩ = 87,000023



Cleiton Ferraz 0\*\*17 3463-1150 0\*\*17 9705-4266  
Cleiton Ferraz 0\*\*17 3463-1150 0\*\*17 9705-4266



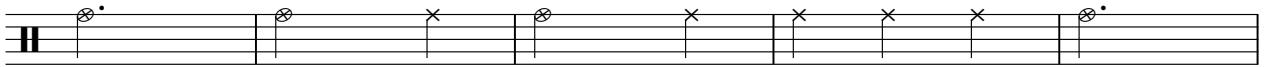
2

Percussion

97



106



111



Tubular Bells

Elis Regina - Romaria

♩ = 87,000023

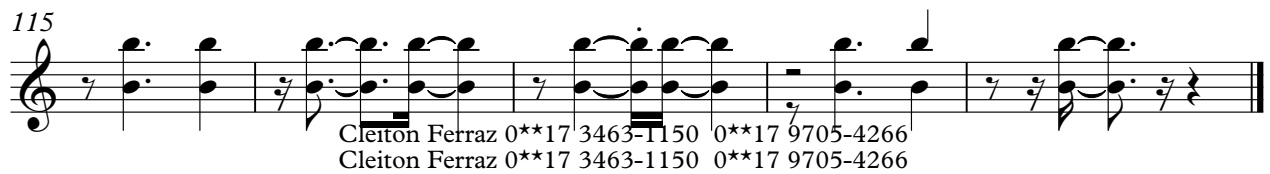
**104**



110



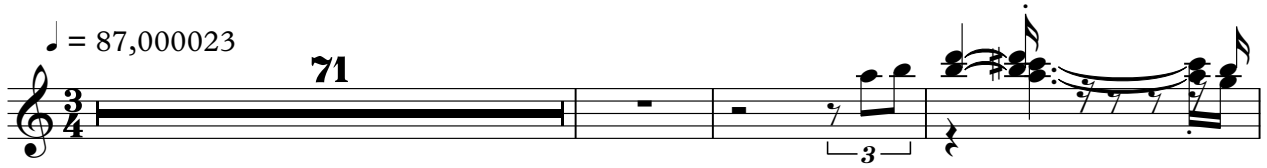
115



Cleiton Ferraz 0\*\*17 3463-1150 0\*\*17 9705-4266  
Cleiton Ferraz 0\*\*17 3463-1150 0\*\*17 9705-4266

♩ = 87,000023

**71**

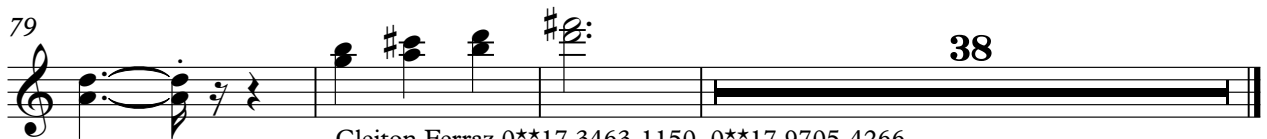


75



79

**38**



Cleiton Ferraz 0\*\*17 3463-1150 0\*\*17 9705-4266  
Cleiton Ferraz 0\*\*17 3463-1150 0\*\*17 9705-4266

# Elis Regina - Romaria

Kora

♩ = 87,000023

**10**

15

19

24

30

36 **4**

45

50

54

60

Cleiton Ferraz 0\*\*17 3463-1150 0\*\*17 9705-4266  
Cleiton Ferraz 0\*\*17 3463-1150 0\*\*17 9705-4266

V.S.

65



72



88



93



98



104



110



6

# Elis Regina - Romaria

Kora

♩ = 87,000023

2 3 3

6 3

9 3 29

40 3 3

43 29 3

Cleiton Ferraz

74 3  
0\*\*17 3463 11500\*\*17 9705 4266

77 3 3

80 3

83 3 35

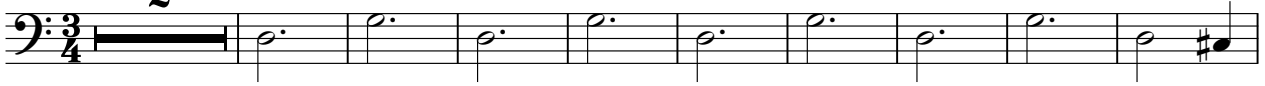
Cleiton Ferraz 0\*\*17 3463-1150 0\*\*17 9705-4266  
Cleiton Ferraz 0\*\*17 3463-1150 0\*\*17 9705-4266

Fretless Electric Bass

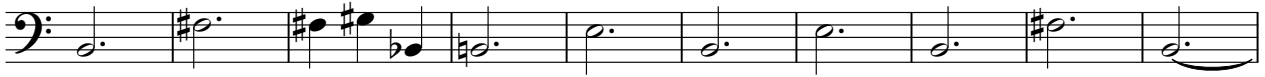
Elis Regina - Romaria

♩ = 87,000023

2



12



22



31



40



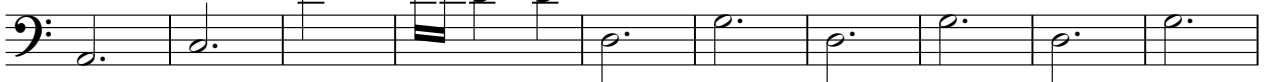
50



60



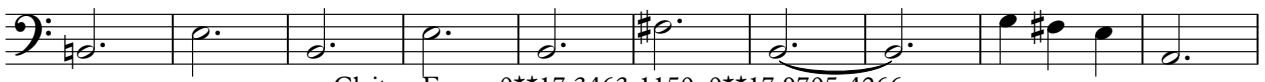
69



79



89



Cleiton Ferraz 0\*\*17 3463-1150 0\*\*17 9705-4266  
Cleiton Ferraz 0\*\*17 3463-1150 0\*\*17 9705-4266

V.S.





Quintus

Elis Regina - Romaria

♩ = 87,000023

88

96

19

2

Cleiton Ferraz 0\*\*17 3463-1150 0\*\*17 9705-4266  
Cleiton Ferraz 0\*\*17 3463-1150 0\*\*17 9705-4266

# Elis Regina - Romaria

Solo

♩ = 87,000023

11

20

29

37

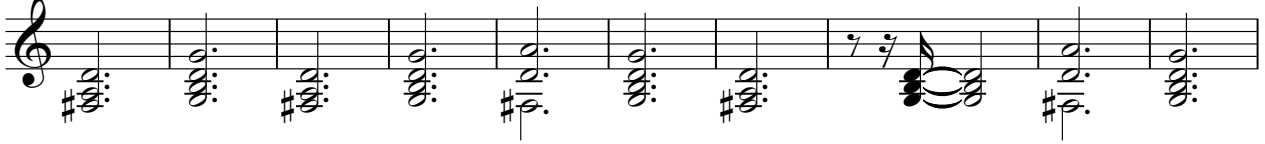
47

56

64

Cleiton Ferraz 0\*\*17 3463-1150 0\*\*17 9705-4266  
Cleiton Ferraz 0\*\*17 3463-1150 0\*\*17 9705-4266

73



83



91



100



108



112

