

Smashing Pumpkins - Disarm

♩ = 130,000137

Tubular Bells

Cello

3

Timpani

Tubular Bells

Cello

5

Timpani

Tubular Bells

Cello

7

Cello

9

Cello

The image displays a musical score for the song "Disarm" by Smashing Pumpkins. The score is written for three instruments: Tubular Bells, Cello, and Timpani. The tempo is marked as ♩ = 130,000137. The score is divided into measures, with measure numbers 3, 5, 7, and 9 indicated. The Tubular Bells part consists of sustained chords and melodic lines. The Cello part features a complex, rhythmic pattern of eighth and sixteenth notes. The Timpani part provides a sparse, percussive accompaniment. A small box in the Cello part at measure 7 contains the text "9.1.00 Disarm...".

11

Cello

22/4
13.1,00
Cut...

13

Cello

15

Cello

29/5
17.1,00
Oh Oh Oh...

17

Cello

19

Timpani

Tubular Bells

Cello

21

Tubular Bells

Cello

23

Tubular Bells

Cello

25

Timpani

Cymbals

Tubular Bells

Cello

47.9"
27.1.00
I used...

26

Timpani

Cymbals

Cello

27

Timpani

Cymbals

Violin

Viola

Cello

29

Violin

Viola

Cello

Violin: Treble clef, whole note G4 (first measure), whole note G4 (second measure).
Viola: Bass clef, whole note G3 (first measure), whole note G3 (second measure).
Cello: Bass clef, eighth notes G2, A2, B2, C3, D3, E3, F3, G3 (first measure); eighth notes G3, A3, B3, C4, D4, E4, F4, G4 (second measure).

31

Timpani

Tubular Bells

Violin

Viola

Cello

Timpani: Rest for both measures.
Tubular Bells: Treble clef, quarter note G4 (first measure), rest (second measure).
Violin: Treble clef, quarter note G4 (first measure), quarter note G4 (second measure).
Viola: Bass clef, quarter note G3 (first measure), quarter note G3 (second measure).
Cello: Bass clef, eighth notes G2, A2, B2, C3, D3, E3, F3, G3 (first measure); eighth notes G3, A3, B3, C4, D4, E4, F4, G4 (second measure).

32

Timpani

Violin

Viola

Cello

Timpani: Bass clef, sixteenth-note rolls on G2, A2, B2, C3, D3, E3, F3, G3 (four groups of six).
Violin: Treble clef, quarter note G4 (first measure), quarter note G4 (second measure).
Viola: Bass clef, quarter note G3 (first measure), quarter note G3 (second measure).
Cello: Bass clef, eighth notes G2, A2, B2, C3, D3, E3, F3, G3 (first measure); eighth notes G3, A3, B3, C4, D4, E4, F4, G4 (second measure).

33

Timpani

Violin

Viola

Cello

35

Violin

Viola

Cello

37

Timpani

Tubular Bells

Violin

Viola

Cello

38

6 6 6 6

Timpani

Violin

Viola

Cello

1'10.1"
39.1,00
The Killer...

39

Timpani

Violin

Viola

Cello

41

Violin

Viola

Cello

43

Violin

Viola

Cello

45

Violin

Viola

48

Timpani

Violin

Viola

49

Timpani

Violin

Viola

Cello

51
Violin
Viola
Cello
53
Acoustic Bass
Violin
Viola
Cello
55
Acoustic Bass
Cello
57
Acoustic Bass
Cello
59
Acoustic Bass
Cello

136.9
53.1,00
Disarm...

Detailed description: This image shows a page of a musical score, page 8, containing measures 51 through 59. The score is arranged in systems. The first system (measures 51-52) features Violin, Viola, and Cello. The second system (measures 53-54) features Acoustic Bass, Violin, Viola, and Cello. The third system (measures 55-56) features Acoustic Bass and Cello. The fourth system (measures 57-58) features Acoustic Bass and Cello. The fifth system (measures 59-60) features Acoustic Bass and Cello. The Cello part is highly rhythmic, consisting of a continuous eighth-note pattern. The Acoustic Bass part provides a steady accompaniment. The Violin and Viola parts are mostly silent in the later measures. A small box containing the text '136.9', '53.1,00', and 'Disarm...' is located below the Cello staff in measure 51.

1'50.7"
61.1,00
Oh Oh Oh...

61

Acoustic Bass

Cello

63

Timpani

Tubular Bells

Acoustic Bass

Cello

65

Tubular Bells

Acoustic Bass

Cello

67

Tubular Bells

Acoustic Bass

Cello

69

Timpani

Tubular Bells

Acoustic Bass

Cello

70

Timpani

Acoustic Bass

Cello

2'09.2"
71.1.00
I used...

71

Timpani

Acoustic Bass

Violin

Viola

Cello

73

Acoustic Bass

Violin

Viola

Cello

Detailed description: This system contains measures 73 and 74. The Acoustic Bass part features a steady eighth-note pattern. The Violin part has a whole note in measure 73 and a whole note in measure 74. The Viola part has a half note in measure 73 and a half note in measure 74. The Cello part has a continuous eighth-note pattern.

2'16.6"
75.1,00
What I...

75

Acoustic Bass

Violin

Viola

Cello

Detailed description: This system contains measures 75 and 76. The Acoustic Bass part continues with eighth notes. The Violin part has a half note in measure 75 and a half note in measure 76. The Viola part has a whole note spanning both measures 75 and 76. The Cello part continues with eighth notes.

77

Acoustic Bass

Violin

Viola

Cello

Detailed description: This system contains measures 77 and 78. The Acoustic Bass part continues with eighth notes. The Violin part has a whole note spanning both measures 77 and 78. The Viola part has a half note in measure 77 and a half note in measure 78. The Cello part continues with eighth notes.

79

Acoustic Bass

Violin

Viola

Cello

81

Acoustic Bass

Violin

Viola

Cello

83

Cymbals

Acoustic Bass

Violin

Viola

Cello

84

Timpani

Cymbals

Acoustic Bass

Violin

Viola

Cello

2'35.0"
85.1,00
The Killer

85

Timpani

Cymbals

Acoustic Bass

Violin

Viola

Cello

87

Acoustic Bass

Violin

Viola

Cello

Detailed description: This system covers measures 87 and 88. The Acoustic Bass part features a steady eighth-note pattern. The Violin part has a half note in measure 87 and a half note with a sharp sign in measure 88. The Viola part plays a sustained whole note across both measures. The Cello part plays a rhythmic eighth-note pattern with a slash through the stem.

88

Timpani

Cymbals

Acoustic Bass

Violin

Viola

Cello

Detailed description: This system covers measures 88 through 91. The Timpani part has four measures of sixteenth-note patterns, each marked with a '6'. The Cymbals part has four measures of rhythmic patterns marked with 'x' and a '6'. The Acoustic Bass part continues with eighth notes. The Violin part has a half note in measure 88, a half note with a sharp sign in measure 89, and a half note in measure 91. The Viola part plays a sustained whole note across measures 88 and 89. The Cello part continues with eighth notes and slashes.

89

Timpani

Cymbals

Acoustic Bass

Violin

Viola

Cello

Detailed description: This block contains the musical notation for measures 89 and 90. The score is for a percussion section (Timpani and Cymbals) and a string section (Acoustic Bass, Violin, Viola, and Cello). The time signature is 7/8. In measure 89, the Timpani plays a single eighth note followed by a quarter rest. The Cymbals play a single eighth note followed by a quarter rest. The Acoustic Bass plays a steady eighth-note pattern. The Violin plays a half note with a slur over it. The Viola plays a quarter note followed by a quarter rest, then a quarter note with a sharp sign. The Cello plays a steady eighth-note pattern. In measure 90, the Timpani and Cymbals are silent. The Acoustic Bass continues its eighth-note pattern. The Violin continues its half note. The Viola plays a quarter note with a sharp sign, followed by a quarter rest, then a quarter note. The Cello continues its eighth-note pattern.

91

Acoustic Bass

Violin

Viola

Cello

Detailed description: This block contains the musical notation for measure 91. The score is for the Acoustic Bass, Violin, Viola, and Cello. The time signature is 7/8. The Acoustic Bass plays a steady eighth-note pattern. The Violin plays a half note with a sharp sign. The Viola plays a half note with a slur over it. The Cello plays a steady eighth-note pattern.

92

Timpani

Cymbals

Acoustic Bass

Violin

Viola

Cello

2'49.8"
93.1,00
The Killer...

93

Timpani

Cymbals

Acoustic Bass

Violin

Viola

Cello

97

Timpani

Cymbals

Acoustic Bass

Violin

Viola

Cello

Detailed description: This block contains the musical notation for measures 97 and 98. The score is arranged in five staves. The Timpani staff (bass clef) shows a single eighth note in measure 97 followed by a rest in measure 98. The Cymbals staff (percussion clef) has a cymbal symbol in measure 97 and a rest in measure 98. The Acoustic Bass staff (bass clef) features a steady eighth-note pattern across both measures. The Violin staff (treble clef) has a half note in measure 97 and a half note with a sharp sign in measure 98. The Viola staff (bass clef) has a quarter note in measure 97, a half note with a slur in measure 98, and a quarter note in measure 99. The Cello staff (bass clef) has a continuous eighth-note pattern throughout both measures.

99

Acoustic Bass

Violin

Viola

Cello

Detailed description: This block contains the musical notation for measures 99 and 100. The Acoustic Bass staff (bass clef) continues with its eighth-note pattern. The Violin staff (treble clef) has a half note in measure 99 and a whole note in measure 100. The Viola staff (bass clef) has a half note in measure 99 and a half note in measure 100. The Cello staff (bass clef) continues with its eighth-note pattern.

101

Acoustic Bass

Violin

Viola

Cello

102

Timpani

Cymbals

Acoustic Bass

Violin

Viola

Cello

103

Timpani

Cymbals

Tubular Bells

Acoustic Bass

Violin

Viola

Cello

This musical score page contains six staves. The top staff is for Timpani, starting with a treble clef and a 7/8 time signature. It features a quarter note followed by two eighth notes in the first measure, and rests in the subsequent two measures. The Cymbals staff begins with a cymbal symbol and has rests in all three measures. The Tubular Bells staff uses a treble clef and has rests in all three measures. The Acoustic Bass staff uses a bass clef and has a half note in the first measure, followed by a half note in the second measure, and a half note in the third measure, all connected by a slur. The Violin staff uses a treble clef and has a half note in the first measure, followed by a half note in the second measure, and a half note in the third measure, all connected by a slur. The Viola staff uses an alto clef and has a half note in the first measure, followed by a half note in the second measure, and a half note in the third measure, all connected by a slur. The Cello staff uses a bass clef and has a half note in the first measure, followed by a half note in the second measure, and a half note in the third measure, all connected by a slur.

Timpani

Smashing Pumpkins - Disarm

♩ = 130,000137

3 14

21 4

26 6 6 6 6

28 3

32 6 6 6 6

34 3

38 6 6 6 6

40 8 6 6 6 6

49 14

2

Timpani

64

64 4

Measures 64-69: Measure 64 starts with a bass clef, a whole rest, and a quarter note G2. Measure 65 has a whole rest. Measure 66 has a whole rest. Measure 67 has a whole rest. Measure 68 has a whole rest. Measure 69 has a quarter note G2, a quarter rest, and a quarter rest.

70

70 6 6 6 6

Measures 70-71: Measure 70 has six sixteenth notes G2, A2, B2, C3, D3, E3. Measure 71 has six sixteenth notes F3, G3, A3, B3, C4, D4.

72

72 12 6 6 6 6

Measures 72-77: Measure 72 has a whole rest. Measures 73-77 each have six sixteenth notes G2, A2, B2, C3, D3, E3.

85

85 2

Measures 85-87: Measure 85 has a quarter note G2, a quarter rest, and a quarter rest. Measure 86 has a whole rest. Measure 87 has a whole rest.

88

88 6 6 6 6

Measures 88-91: Measure 88 has six sixteenth notes G2, A2, B2, C3, D3, E3. Measure 89 has six sixteenth notes F3, G3, A3, B3, C4, D4. Measure 90 has six sixteenth notes E4, F4, G4, A4, B4, C5. Measure 91 has six sixteenth notes D5, E5, F5, G5, A5, B5.

90

90 2 6 6 6 6

Measures 90-95: Measure 90 has a whole rest. Measures 91-95 each have six sixteenth notes G2, A2, B2, C3, D3, E3.

93

93 2

Measures 93-95: Measure 93 has a quarter note G2, a quarter rest, and a quarter rest. Measure 94 has a whole rest. Measure 95 has a whole rest.

96

96 6 6 6 6

Measures 96-97: Measure 96 has six sixteenth notes G2, A2, B2, C3, D3, E3. Measure 97 has six sixteenth notes F3, G3, A3, B3, C4, D4.

98

98 4 6 6 6 6

Measures 98-102: Measure 98 has a whole rest. Measures 99-102 each have six sixteenth notes G2, A2, B2, C3, D3, E3.

103

103

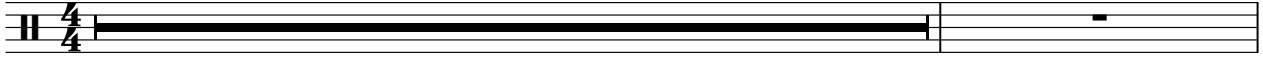
Measures 103-105: Measure 103 has a quarter note G2, a quarter rest, and a quarter rest. Measure 104 has a whole rest. Measure 105 has a whole rest.

Cymbals

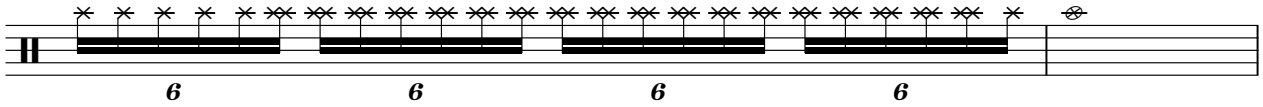
Smashing Pumpkins - Disarm

♩ = 130,000137

24

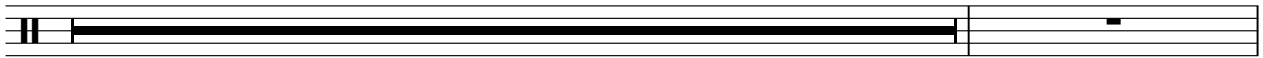


26



28

55

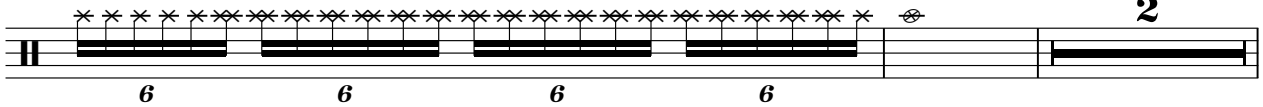


84



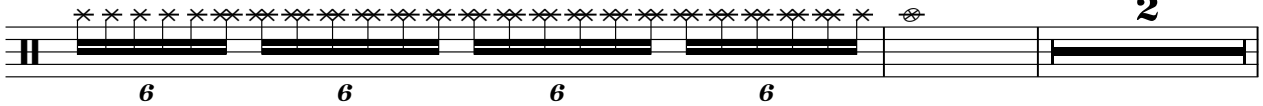
2

88



2

92



2

96



4

102



6

6

6

6

2

Acoustic Bass

92



96



100



Violin

Smashing Pumpkins - Disarm

♩ = 130,000137

26

32

39

45

51

17

73

80

87

94

100

Viola

Smashing Pumpkins - Disarm

♩ = 130,000137

26

32

40

47

54

17

77

84

89

94

99

Cello

Smashing Pumpkins - Disarm

♩ = 130,000137

3

5

7

9

11

13

15

17

19

V.S.

21



23



25



27



29



31



33



35



37



39



41



43



49



51



53



55



57



59



61



63



V.S.

65



67



69



71



73



75



77



79



81



83



85



87



89



91



93



95



97



99



101



102

