

Engenheiros do Hawai - Apenas bons amigos

♩ = 120,000000

Electric Bass

FM Synth

4

E. Bass

FM

16

E. Bass

FM

Solo

Detailed description: This system contains measures 16 through 19. The E. Bass part (bass clef) starts with a half note G2, followed by quarter notes G2, A2, B2, and C3. The FM part (grand staff) has a treble clef with a whole note chord (G2, B2) in measure 16, and a bass clef with a whole note chord (G2, B2) in measure 16. In measure 17, the treble clef has a quarter note G3, and the bass clef has a quarter note G2. In measure 18, the treble clef has a quarter note A3, and the bass clef has a quarter note A2. In measure 19, the treble clef has a quarter note B3, and the bass clef has a quarter note B2. The Solo part (treble clef) has a quarter note G3 in measure 16, followed by quarter notes A3, B3, and C4 in measure 17, and rests in measures 18 and 19.

20

E. Bass

FM

Solo

Detailed description: This system contains measures 20 through 23. The E. Bass part (bass clef) has a half note G2 in measure 20, followed by quarter notes G2, A2, B2, and C3 in measure 21. The FM part (grand staff) has a treble clef with a whole note chord (G2, B2) in measure 20, and a bass clef with a whole note chord (G2, B2) in measure 20. In measure 21, the treble clef has a quarter note G3, and the bass clef has a quarter note G2. In measure 22, the treble clef has a quarter note A3, and the bass clef has a quarter note A2. In measure 23, the treble clef has a quarter note B3, and the bass clef has a quarter note B2. The Solo part (treble clef) has rests in measures 20 and 21, followed by quarter notes G3, A3, B3, and C4 in measure 22, and a quarter note C4 in measure 23.

24

E. Bass

FM

Solo

28

E. Bass

FM

Solo

32

E. Bass

FM

Solo

36

Perc.

E. Gtr.

E. Bass

FM

Solo

$\text{♩} = 130,000137$

40

Perc.

E. Gtr.

E. Bass

FM

Solo

43

Perc.

E. Gtr.

E. Bass

FM

Solo

46

Perc. E. Gtr. E. Bass FM Solo

This system of music covers measures 46, 47, and 48. It features five staves: Percussion (Perc.), Electric Guitar (E. Gtr.), Electric Bass (E. Bass), Fretless Mandolin (FM), and Solo. The Percussion staff shows a consistent rhythmic pattern of eighth notes. The E. Gtr. and E. Bass staves play a steady eighth-note accompaniment. The FM staff has a melodic line with slurs and accents. The Solo staff has a sparse, rhythmic accompaniment with some rests.

49

Perc. E. Gtr. E. Bass FM Solo

This system of music covers measures 49, 50, and 51. It features the same five staves as the previous system. The Percussion staff continues with its eighth-note pattern. The E. Gtr. and E. Bass staves maintain their accompaniment. The FM staff continues its melodic line. The Solo staff has a sparse, rhythmic accompaniment with some rests.

52

Perc.

E. Gtr.

E. Bass

FM

Solo

55 ♩ = 120,000000

Perc.

E. Gtr.

E. Bass

FM

Solo

59

E. Bass

FM

Solo

62

E. Bass

FM

Solo

Percussion

Engenheiros do Hawai - Apenas bons amigos

♩ = 120,000000 **37** ♩ = 130,000137

4/4

41

45

49

53 ♩ = 120,000000 **9**

9

♩ = 120,000000 ♩ = 130,000137

38

42

46

50

53

♩ = 120,000000

9

♩ = 120,000000



9



17



25



31



39 ♩ = 130,000137



43



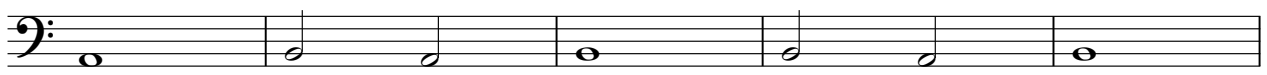
47



51



55 ♩ = 120,000000



2

Electric Bass

60



♩ = 120,000000

Measures 1-4 of the piece. The music is in 4/4 time. The right hand plays a melodic line starting with a quarter note G4, followed by eighth notes A4, B4, C5, D5, E5, and a quarter note D5. The left hand provides a bass line with quarter notes G2, A2, B2, C3, D3, E3, and a quarter note D3.

5

Measures 5-8. The right hand continues the melodic line with quarter notes E5, F5, G5, A5, B5, and a quarter note A5. The left hand continues with quarter notes F2, G2, A2, B2, C3, D3, and a quarter note C3.

10

Measures 9-16. The right hand plays chords: G4-B4, A4-C5, B4-D5, and A4-C5. The left hand plays chords: G2-B2, A2-C3, B2-D3, and G2-B2.

17

Measures 17-21. The right hand plays a melodic line: G4, A4, B4, C5, D5, E5, F5, G5, A5, B5, C6, B5, A5, G5, F5, E5, D5, C5. The left hand plays a bass line: G2, A2, B2, C3, D3, E3, F3, G3, A3, B3, C4, B3, A3, G3, F3, E3, D3, C3.

22

Measures 22-28. The right hand plays chords: G4-B4, A4-C5, B4-D5, and A4-C5. The left hand plays chords: G2-B2, A2-C3, B2-D3, and G2-B2.

29

Measures 29-36. The right hand plays a melodic line: G4, A4, B4, C5, D5, E5, F5, G5, A5, B5, C6, B5, A5, G5, F5, E5, D5, C5. The left hand plays a bass line: G2, A2, B2, C3, D3, E3, F3, G3, A3, B3, C4, B3, A3, G3, F3, E3, D3, C3.

V.S.

FM Synth

♩ = 130,000137

36

41

45

49

53

♩ = 120,000000

58

Engenheiros do Hawai - Apenas bons amigos

Solo

♩ = 120,000000

8

13

18

25

30

34

38

43

48

53

♩ = 130,000137

♩ = 120,000000

V.S.

2

Solo

58



61

