

Enya - LOTHLORN

♩ = 120,000000
album by Enya

Triangle

Lothlorien - From the Shepherd

FX 4 (Atmosphere)

3

Tri.

FX 4

5

Tri.

FX 4

7

Tri.

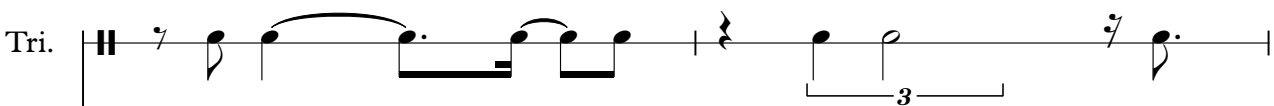
FX 4

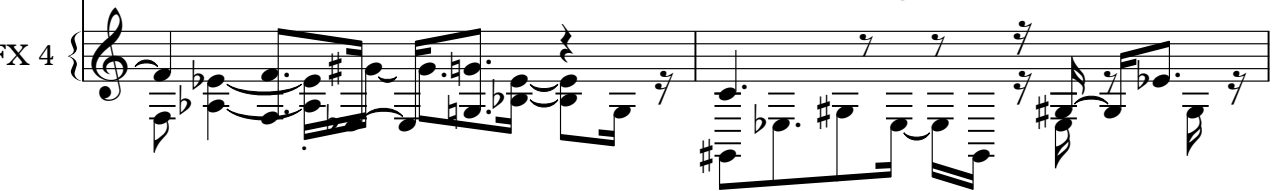
9

Tri.

FX 4

11

Tri. 

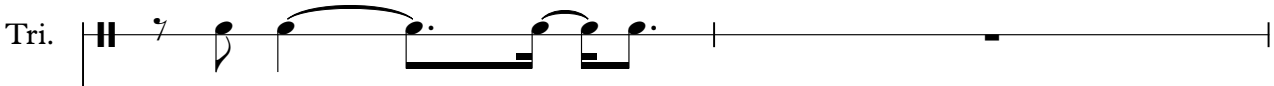
FX 4 

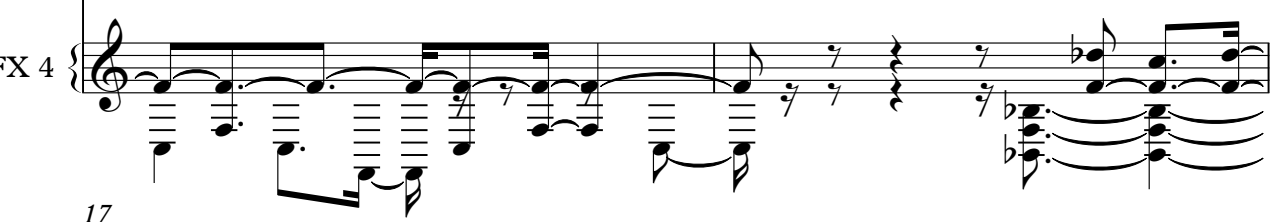
13

Tri. 


FX 4 


15

Tri. 

FX 4 

17

Tri. 


FX 4 

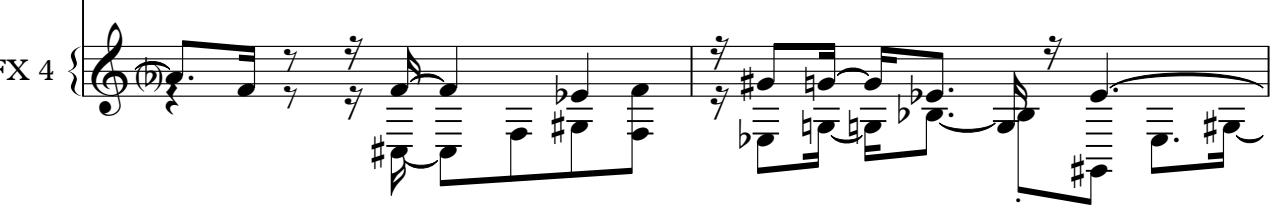
19

Tri. 

FX 4 

21

Tri. 

FX 4 

Musical score for Tri. and FX 4, measures 23-33. The score is written in 4/4 time and features a complex rhythmic pattern with many rests. The Tri. part is in a high register, while the FX 4 part is in a lower register. The key signature is one flat (B-flat).

Measures 23-24: Tri. starts with a quarter note, followed by a half note. FX 4 has a complex rhythmic pattern with many rests and a triplet of eighth notes.

Measures 25-26: Tri. continues with a quarter note, followed by a half note. FX 4 has a complex rhythmic pattern with many rests and a triplet of eighth notes.

Measures 27-28: Tri. continues with a quarter note, followed by a half note. FX 4 has a complex rhythmic pattern with many rests and a triplet of eighth notes.

Measures 29-30: Tri. continues with a quarter note, followed by a half note. FX 4 has a complex rhythmic pattern with many rests and a triplet of eighth notes.

Measures 31-32: Tri. continues with a quarter note, followed by a half note. FX 4 has a complex rhythmic pattern with many rests and a triplet of eighth notes.

Measures 33: Tri. continues with a quarter note, followed by a half note. FX 4 has a complex rhythmic pattern with many rests and a triplet of eighth notes.

35

Tri.

FX 4

Hand

37

Tri.

FX 4

39

Tri.

FX 4

41

Tri.

FX 4

43

Tri.

FX 4

45

Tri.

FX 4

47

Tri.

FX 4

3

49

Tri.

FX 4

51

Tri.

FX 4

52

Tri.

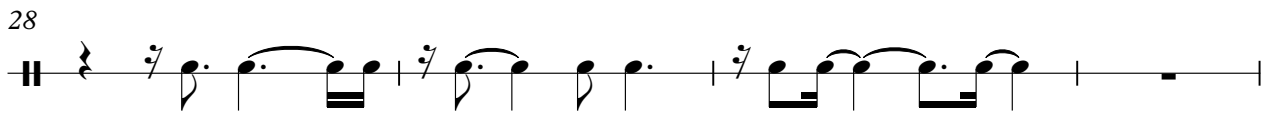
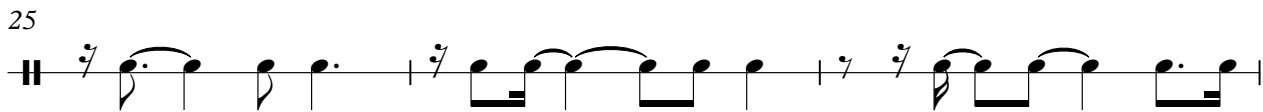
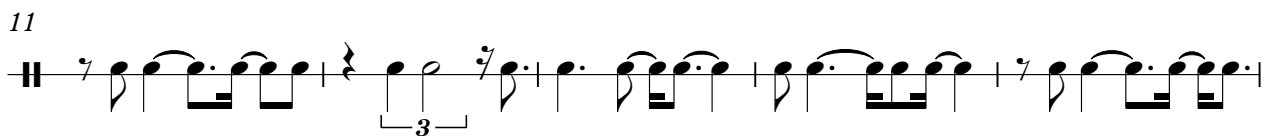
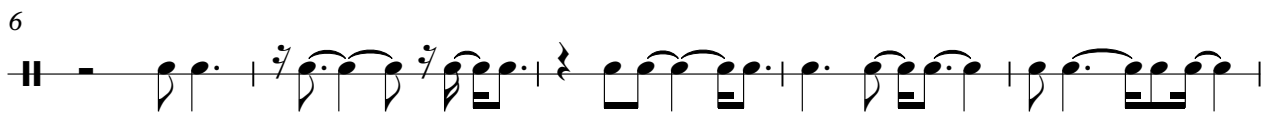
FX 4

3

Triangle

Enya - LOTHLORN

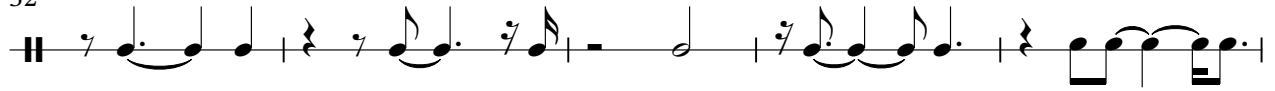
♩ = 120,000000
album by Enya



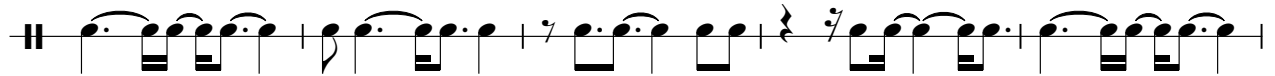
2

Triangle

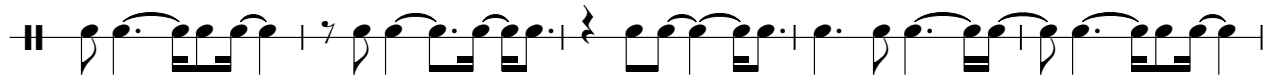
32



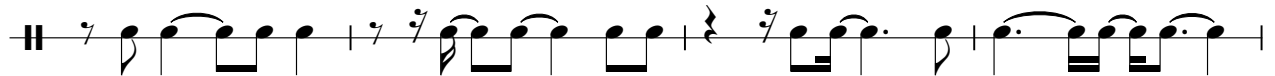
37



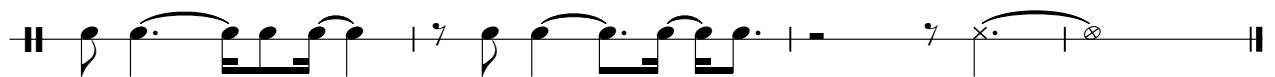
42



47



51



FX 4 (Atmosphere)

Enya - LOTHLORN

♩ = 120,000000

Lothlorien - From the Shepherd

The image displays a musical score for a guitar effect (FX 4) in the atmosphere style. The score is written in 4/4 time and consists of 22 measures. The notation includes a treble clef, a key signature of one flat (B-flat), and various rhythmic values such as eighth and sixteenth notes. The score features several instances of triplets and slurs. Measure numbers 4, 7, 9, 11, 13, 15, 17, 20, and 22 are indicated on the left side of the staff. The piece is titled 'Lothlorien - From the Shepherd' and has a tempo of 120,000000. The score concludes with the initials 'V.S.' in the bottom right corner.

V.S.

A musical score for a guitar effect named 'FX 4 (Atmosphere)'. The score is written on ten staves, each starting with a measure number: 24, 26, 28, 31, 34, 37, 39, 41, 43, and 45. The notation is complex, featuring a mix of treble and bass clefs, various note values (eighths, sixteens, and dotted notes), and rests. There are several instances of triplets, indicated by a '3' and a bracket. The key signature is mostly one flat (B-flat), with some changes to two flats (B-flat and E-flat) in later measures. The overall texture is dense and rhythmic, typical of an atmospheric guitar effect.

47

49

51

53