

Eric Clapton - After Midnight 2

0.0°  
1.1.00

♩ = 120,000000

DRUMS

GUITAR

GUITAR

GUITAR

GUITAR

BASS

M GUITAR

ORGAN 18

♩ = 120,000000

VOCAL

PIANO



5

DRUMS

GUITAR

GUITAR

GUITAR

BASS

M GUITAR

ORGAN 18

8

DRUMS

GUITAR

GUITAR

BASS

M GUITAR

ORGAN 18

VOCAL

PIANO



11

DRUMS

GUITAR

GUITAR

BASS

M GUITAR

ORGAN 18

VOCAL

PIANO

14

DRUMS

GUITAR

GUITAR

BASS

M GUITAR

ORGAN 18

VOCAL

PIANO



17

DRUMS

GUITAR

GUITAR

GUITAR

BASS

M GUITAR

ORGAN 18

VOCAL

PIANO

20

DRUMS

GUITAR

GUITAR

GUITAR

BASS

M GUITAR

ORGAN 18

VOCAL

PIANO



22

DRUMS

GUITAR

GUITAR

GUITAR

BASS

M GUITAR

ORGAN 18

VOCAL

PIANO

24

DRUMS

GUITAR

GUITAR

GUITAR

BASS

M GUITAR

ORGAN 18

VOCAL

PIANO



26

DRUMS

GUITAR

GUITAR

GUITAR

BASS

M GUITAR

ORGAN 18

VOCAL

PIANO

28

DRUMS

GUITAR

GUITAR

GUITAR

BASS

M GUITAR

ORGAN 18

VOCAL

PIANO



30

DRUMS

GUITAR

GUITAR

GUITAR

BASS

M GUITAR

ORGAN 18

VOCAL

PIANO

32

DRUMS

GUITAR

GUITAR

GUITAR

BASS

M GUITAR

ORGAN 18

VOCAL

PIANO



34

DRUMS

GUITAR

GUITAR

GUITAR

BASS

M GUITAR

ORGAN 18

VOCAL

PIANO

37

DRUMS

GUITAR

GUITAR

GUITAR

BASS

M GUITAR

ORGAN 18

VOCAL

PIANO



39

DRUMS

GUITAR

GUITAR

GUITAR

BASS

M GUITAR

ORGAN 18

VOCAL

PIANO



41

DRUMS

GUITAR

GUITAR

GUITAR

GUITAR

BASS

M GUITAR

ORGAN 18

PIANO



43

DRUMS

GUITAR

GUITAR

GUITAR

GUITAR

BASS

M GUITAR

ORGAN 18

PIANO

45

DRUMS

GUITAR

GUITAR

GUITAR

GUITAR

BASS

M GUITAR

ORGAN 18

PIANO



47

DRUMS

GUITAR

GUITAR

GUITAR

GUITAR

BASS

M GUITAR

ORGAN 18

PIANO

49

DRUMS

GUITAR

GUITAR

GUITAR

GUITAR

BASS

M GUITAR

ORGAN 18

PIANO



51

DRUMS

GUITAR

GUITAR

GUITAR

GUITAR

BASS

M GUITAR

ORGAN 18

PIANO

53

DRUMS

GUITAR

GUITAR

GUITAR

BASS

M GUITAR

ORGAN 18

PIANO



55

DRUMS

GUITAR

GUITAR

GUITAR

BASS

M GUITAR

ORGAN 18

VOCAL

PIANO

57

DRUMS

GUITAR

GUITAR

GUITAR

BASS

M GUITAR

ORGAN 18

VOCAL

PIANO



59

DRUMS

GUITAR

GUITAR

GUITAR

BASS

M GUITAR

ORGAN 18

VOCAL

PIANO

61

DRUMS

GUITAR

GUITAR

GUITAR

BASS

M GUITAR

ORGAN 18

VOCAL

PIANO



63

DRUMS

GUITAR

GUITAR

GUITAR

BASS

M GUITAR

ORGAN 18

VOCAL

PIANO

65

DRUMS

GUITAR

GUITAR

GUITAR

BASS

M GUITAR

ORGAN 18

VOCAL

PIANO



67

DRUMS

GUITAR

GUITAR

GUITAR

BASS

M GUITAR

ORGAN 18

VOCAL

PIANO

69

DRUMS

GUITAR

GUITAR

GUITAR

BASS

M GUITAR

ORGAN 18

VOCAL

PIANO



71

DRUMS

GUITAR

GUITAR

GUITAR

BASS

M GUITAR

ORGAN 18

VOCAL

PIANO



73

DRUMS

GUITAR

GUITAR

GUITAR

BASS

M GUITAR

ORGAN 18

VOCAL

PIANO



75

DRUMS

GUITAR

GUITAR

GUITAR

BASS

M GUITAR

ORGAN 18

VOCAL

PIANO

77

DRUMS

GUITAR

GUITAR

GUITAR

GUITAR

BASS

M GUITAR

ORGAN 18

VOCAL

PIANO



79

DRUMS

GUITAR

GUITAR

GUITAR

GUITAR

BASS

M GUITAR

ORGAN 18

VOCAL

PIANO

81

DRUMS

GUITAR

GUITAR

GUITAR

GUITAR

BASS

M GUITAR

ORGAN 18

VOCAL

PIANO



83

DRUMS

GUITAR

GUITAR

GUITAR

GUITAR

BASS

M GUITAR

ORGAN 18

VOCAL

PIANO

85

DRUMS

GUITAR

GUITAR

GUITAR

GUITAR

BASS

M GUITAR

ORGAN 18

VOCAL

PIANO



87

DRUMS

GUITAR

GUITAR

GUITAR

GUITAR

BASS

M GUITAR

ORGAN 18

VOCAL

PIANO

89

DRUMS

GUITAR

GUITAR

GUITAR

GUITAR

BASS

M GUITAR

ORGAN 18

VOCAL

PIANO



91

DRUMS

GUITAR

GUITAR

GUITAR

GUITAR

BASS

M GUITAR

ORGAN 18

PIANO

Eric Clapton - After Midnight 2

DRUMS

♩ = 120,000000

The image displays a drum score for the song "After Midnight 2" by Eric Clapton. The score is written in 4/4 time with a tempo of 120 beats per minute. It consists of ten staves, each representing a measure of music. The notation includes various drum symbols such as snare, bass drum, and cymbal, along with rests and dynamic markings. The first staff shows the initial drum entry, followed by a series of rhythmic patterns. The notation is complex, featuring many sixteenth and thirty-second notes, and includes various articulation marks like accents and slurs. The score is presented in a standard musical notation style with a treble clef and a key signature of one flat.

V.S.

DRUMS

22

Musical notation for drum set at measure 22. The top staff shows a snare drum pattern with eighth notes and rests. The bottom staff shows a bass drum pattern with eighth notes and rests.

24

Musical notation for drum set at measure 24. The top staff shows a snare drum pattern with eighth notes and rests. The bottom staff shows a bass drum pattern with eighth notes and rests.

26

Musical notation for drum set at measure 26. The top staff shows a snare drum pattern with eighth notes and rests. The bottom staff shows a bass drum pattern with eighth notes and rests.

28

Musical notation for drum set at measure 28. The top staff shows a snare drum pattern with eighth notes and rests. The bottom staff shows a bass drum pattern with eighth notes and rests.

30

Musical notation for drum set at measure 30. The top staff shows a snare drum pattern with eighth notes and rests. The bottom staff shows a bass drum pattern with eighth notes and rests.

32

Musical notation for drum set at measure 32. The top staff shows a snare drum pattern with eighth notes and rests. The bottom staff shows a bass drum pattern with eighth notes and rests.

34

Musical notation for drum set at measure 34. The top staff shows a snare drum pattern with eighth notes and rests. The bottom staff shows a bass drum pattern with eighth notes and rests.

36

Musical notation for drum set at measure 36. The top staff shows a snare drum pattern with eighth notes and rests. The bottom staff shows a bass drum pattern with eighth notes and rests.

38

Musical notation for drum set at measure 38. The top staff shows a snare drum pattern with eighth notes and rests. The bottom staff shows a bass drum pattern with eighth notes and rests.

40

Musical notation for drum set at measure 40. The top staff shows a snare drum pattern with eighth notes and rests. The bottom staff shows a bass drum pattern with eighth notes and rests.

DRUMS

42

44

46

48

50

52

54

56

58

60

V.S.



62

64

66

68

69

70

71

72

73

74

DRUMS

75

76

77

78

79

80

81

82

83

84

V.S.

DRUMS

85

86

87

88

89

90

91

Eric Clapton - After Midnight 2

GUITAR

♩ = 120,000000

6

18

23

27

31

36

40

44

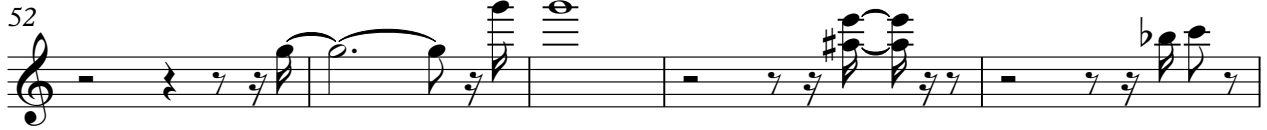
47

9

2

GUITAR

52



57



61



65



70



75



79



83



87



90



GUITAR

Eric Clapton - After Midnight 2

♩ = 120,000000

39

43

46

49

51

53

78

82

86

89

23

GUITAR

Eric Clapton - After Midnight 2

♩ = 120,000000

5

8

11

14

17

20

23

26

29

V.S.

32



35



38



41



44



47



50



53



56



59





62

65

68

70

73

76

79

82

85

88

V.S.

90



GUITAR

Eric Clapton - After Midnight 2

♩ = 120,000000

2

6

9

12

15

18

21

24

27

29

V.S.



59

62

64

67

70

73

76

79

82

85

V.S.

4

GUITAR

88



90



Eric Clapton - After Midnight 2

BASS

♩ = 120,000000

2

7

11

15

19

22

25

28

31

34

V.S.

37



40



43



46



49



52



55



58



61



64





68



71



74



77



80



83



86



89



M GUITAR

Eric Clapton - After Midnight 2

♩ = 120,000000

2

7

11

15

19

22

25

28

31

34

V.S.

37



40



43



46



49



52



55



58



61



64



68



71



74



77



80



83



86



89



♩ = 120,000000

7

11

15

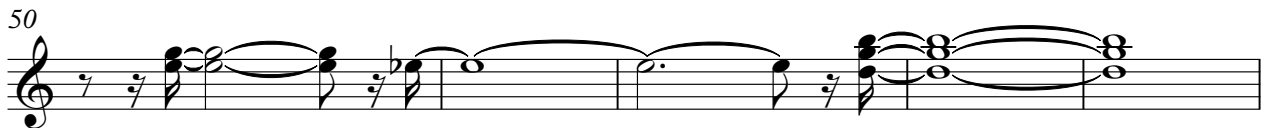
21

24

27

30

V.S.



64

69

73

76

79

82

85

88

V.S.





Eric Clapton - After Midnight 2

VOCAL

♩ = 120,000000

6

11

16

20

24

29

33

36

40

14

56

59



63



66



69



73



77



82



87



PIANO

Eric Clapton - After Midnight 2

♩ = 120,000000

6

10

14

18

21

24

27

30

Musical score for piano, measures 34-62. The score is written in treble clef with a key signature of one flat (B-flat). The tempo is marked 'PIANO'. The music features complex rhythmic patterns, including sixteenth and thirty-second notes, and various chordal textures. Measure numbers 34, 37, 40, 43, 46, 49, 53, 55, 58, and 62 are indicated at the start of their respective staves. A sixteenth-note triplet is marked with a '6' in measure 37, and a thirty-second-note triplet is marked with a '3' in measure 53. The score concludes with a final cadence in measure 62.

66



69



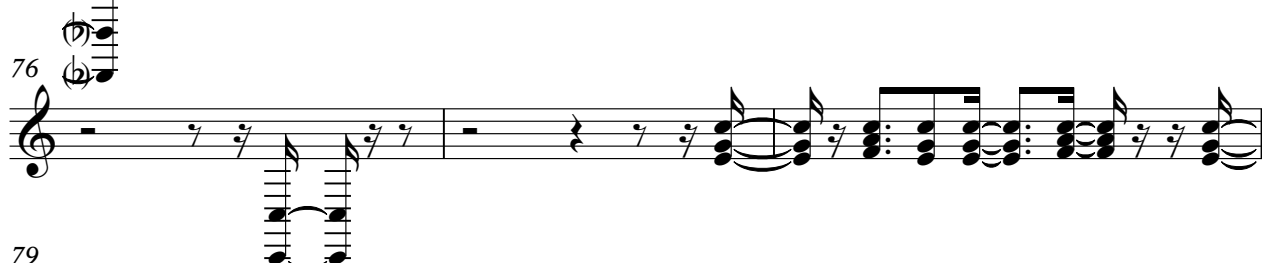
71



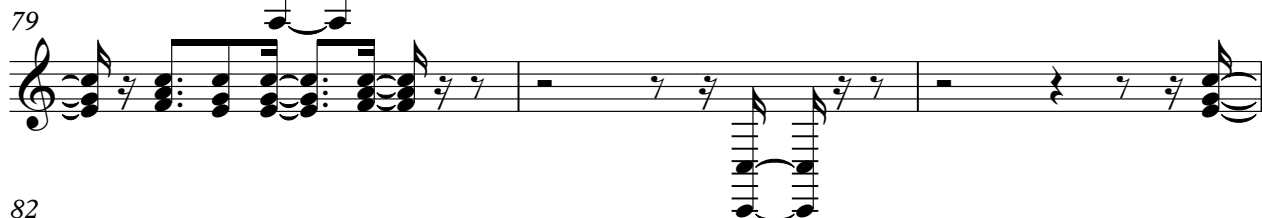
73



76



79



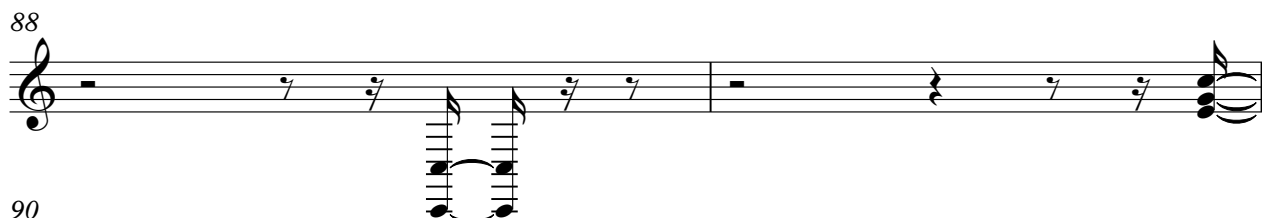
82



85



88



90

