

# Evangelica - Alto Preco

♩ = 120,000000

new

new

new

new

4

new

new

new

new

2

6

new

new

new

new

Detailed description: This system contains measures 6 and 7. It features four staves. The top staff is a treble clef with a whole note chord. The second staff is a bass clef with a melodic line. The third staff is a bass clef with a rhythmic accompaniment. The fourth staff is a treble clef with a complex accompaniment. A measure rest is present in the second measure.

8

new

new

new

new

Detailed description: This system contains measures 8 and 9. It features four staves. The top staff is a treble clef with a whole note chord. The second staff is a bass clef with a melodic line. The third staff is a bass clef with a rhythmic accompaniment. The fourth staff is a treble clef with a complex accompaniment. A measure rest is present in the second measure. A '3' is written below the fourth staff in the second measure.

9

new

new

new

new

Detailed description: This system contains measures 10 and 11. It features four staves. The top staff is a treble clef with a whole note chord. The second staff is a bass clef with a melodic line. The third staff is a bass clef with a rhythmic accompaniment. The fourth staff is a treble clef with a complex accompaniment. A measure rest is present in the second measure.

10

new

new

new

new

11

new

new

new

new

12

new

new

new

new

14

new

new

new

new

This system contains measures 14 and 15. It features four staves. The top staff is a treble clef with a single note. The second staff is a bass clef with a melodic line. The third staff is a bass clef with a rhythmic accompaniment. The fourth staff is a treble clef with a complex accompaniment including a triplet of eighth notes.

16

new

new

new

new

This system contains measures 16 and 17. It features four staves. The top staff is a treble clef with a single note. The second staff is a bass clef with a melodic line. The third staff is a bass clef with a rhythmic accompaniment. The fourth staff is a treble clef with a complex accompaniment including a triplet of eighth notes.

17

new

new

new

new

This system contains measures 17 and 18. It features four staves. The top staff is a treble clef with a single note. The second staff is a bass clef with a melodic line. The third staff is a bass clef with a rhythmic accompaniment. The fourth staff is a treble clef with a complex accompaniment including a triplet of eighth notes.

18

new

new

new

20

new

new

new

21

new

new

new

23

new

new

new

new

Detailed description: This system contains measures 23 and 24. It features four staves. The top staff is a treble clef with a melodic line. The second and third staves are bass clefs, with the second staff containing a complex bass line with many beamed notes. The fourth staff is a treble clef with a complex accompaniment. Measure 23 ends with a double bar line.

24

new

new

new

new

Detailed description: This system contains measures 24 and 25. It features four staves. The top staff is a treble clef with a melodic line. The second and third staves are bass clefs, with the second staff containing a complex bass line with many beamed notes. The fourth staff is a treble clef with a complex accompaniment. Measure 24 ends with a double bar line. Measure 25 features a triplet in the fourth staff.

25

new

new

new

new

Detailed description: This system contains measures 25 and 26. It features four staves. The top staff is a treble clef with a melodic line. The second and third staves are bass clefs, with the second staff containing a complex bass line with many beamed notes. The fourth staff is a treble clef with a complex accompaniment. Measure 25 ends with a double bar line. Measure 26 features a triplet in the fourth staff.

26

new

new

new

This system contains measures 26 and 27. The first staff (treble clef) has a melodic line starting with a quarter note, followed by a half note, and then a quarter note. The second staff (bass clef) has a bass line with a quarter note, a half note, and a quarter note. The third staff (bass clef) has a bass line with a quarter note, a half note, and a quarter note.

new

This system contains measures 26 and 27. The first staff (treble clef) has a melodic line with a triplet of eighth notes. The second staff (bass clef) has a bass line with a triplet of eighth notes. The third staff (bass clef) has a bass line with a triplet of eighth notes.

28

new

new

new

This system contains measures 28 and 29. The first staff (treble clef) has a melodic line starting with a quarter note, followed by a half note, and then a quarter note. The second staff (bass clef) has a bass line with a quarter note, a half note, and a quarter note. The third staff (bass clef) has a bass line with a quarter note, a half note, and a quarter note.

new

This system contains measures 28 and 29. The first staff (treble clef) has a melodic line with a triplet of eighth notes. The second staff (bass clef) has a bass line with a triplet of eighth notes. The third staff (bass clef) has a bass line with a triplet of eighth notes.

30

new

new

new

This system contains measures 30 and 31. The first staff (treble clef) has a melodic line starting with a quarter note, followed by a half note, and then a quarter note. The second staff (bass clef) has a bass line with a quarter note, a half note, and a quarter note. The third staff (bass clef) has a bass line with a quarter note, a half note, and a quarter note.

new

This system contains measures 30 and 31. The first staff (treble clef) has a melodic line with a triplet of eighth notes. The second staff (bass clef) has a bass line with a triplet of eighth notes. The third staff (bass clef) has a bass line with a triplet of eighth notes.

32

new

new

new

new

34

new

new

new

new

36

new

new

new

new





43

new

new

new

new

44

new

new

new

new

45

new

new

new

new

46

new

new

new

new

This system contains measures 46 and 47. It features four staves. The top staff is in treble clef, and the three staves below are in bass clef. The music includes various note values, rests, and articulation marks. A triplet of eighth notes is indicated in the second bass staff in measure 46.

48

new

new

new

new

This system contains measures 48 and 49. It features four staves. The top staff is in treble clef, and the three staves below are in bass clef. The music includes various note values, rests, and articulation marks. A triplet of eighth notes is indicated in the second bass staff in measure 49.

49

new

new

new

new

This system contains measures 49 and 50. It features four staves. The top staff is in treble clef, and the three staves below are in bass clef. The music includes various note values, rests, and articulation marks. A triplet of eighth notes is indicated in the top staff in measure 49.



54

new

new

new

new

This system contains measures 54 and 55. It features four staves: a vocal line in treble clef, a bass line in bass clef, a piano accompaniment in bass clef, and a guitar accompaniment in treble clef. The piano part includes a triplet of eighth notes in measure 54. The guitar part features a complex rhythmic pattern with many beamed notes.

56

new

new

new

new

This system contains measures 56 and 57. It features four staves: a vocal line in treble clef, a bass line in bass clef, a piano accompaniment in bass clef, and a guitar accompaniment in treble clef. The piano part includes a triplet of eighth notes in measure 57. The guitar part continues with complex rhythmic patterns.

58

new

new

new

new

This system contains measures 58 and 59. It features four staves: a vocal line in treble clef, a bass line in bass clef, a piano accompaniment in bass clef, and a guitar accompaniment in treble clef. The piano part includes a triplet of eighth notes in measure 58. The guitar part includes a triplet of eighth notes in measure 58 and continues with complex rhythmic patterns.

The image displays a musical score for guitar, organized into four systems. Each system consists of four staves, with the top two staves in treble clef and the bottom two in bass clef. The word "new" is printed to the left of each staff. The score begins at measure 60 and ends at measure 63. Measure 60 features a treble staff with a triplet of eighth notes and a bass staff with a triplet of eighth notes. Measure 61 shows a treble staff with a long melodic line and a bass staff with a triplet of eighth notes. Measure 62 has a treble staff with a long melodic line and a bass staff with a triplet of eighth notes. Measure 63 features a treble staff with a triplet of eighth notes and a bass staff with a triplet of eighth notes. The notation includes various musical symbols such as notes, rests, beams, and slurs.

65

new

new

new

new

66

new

new

new

new

67

new

new

new

new

69

new

new

new

new

70

new

new

new

new

72

new

new

new

new



74

new

new

new

new

Detailed description: This system contains measures 74 and 75. The first staff (treble clef) has a whole note in measure 74 and a half note in measure 75. The second staff (bass clef) has a whole note in measure 74 and a half note in measure 75. The third staff (bass clef) has a whole note in measure 74 and a half note in measure 75. The fourth staff (treble clef) has a whole note in measure 74 and a half note in measure 75.

75

new

new

new

new

Detailed description: This system contains measures 75 and 76. The first staff (treble clef) has a whole note in measure 75 and a half note in measure 76. The second staff (bass clef) has a whole note in measure 75 and a half note in measure 76. The third staff (bass clef) has a whole note in measure 75 and a half note in measure 76. The fourth staff (treble clef) has a whole note in measure 75 and a half note in measure 76.

76

new

new

new

new

Detailed description: This system contains measures 76 and 77. The first staff (treble clef) has a whole note in measure 76 and a half note in measure 77. The second staff (bass clef) has a whole note in measure 76 and a half note in measure 77. The third staff (bass clef) has a whole note in measure 76 and a half note in measure 77. The fourth staff (treble clef) has a whole note in measure 76 and a half note in measure 77.

77

new

new

new

new

78

new

new

new

new

79

new

new

new

new

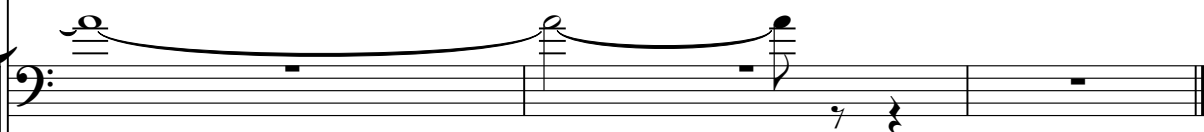
80

new



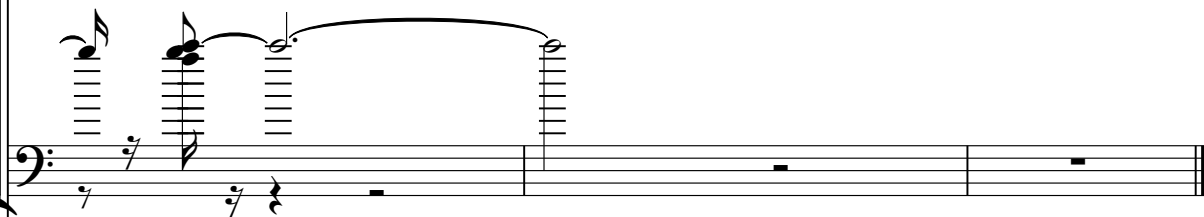
A musical staff with a treble clef. It contains a whole note chord with a slur over it, spanning across the first two measures of the system.

new



A musical staff with a bass clef. It contains a whole note chord with a slur over it, spanning across the first two measures. A 7th fret marker is present in the second measure.

new



A musical staff with a bass clef. It contains a complex chord structure with a slur over it, spanning across the first two measures. A 7th fret marker is present in the second measure.

new

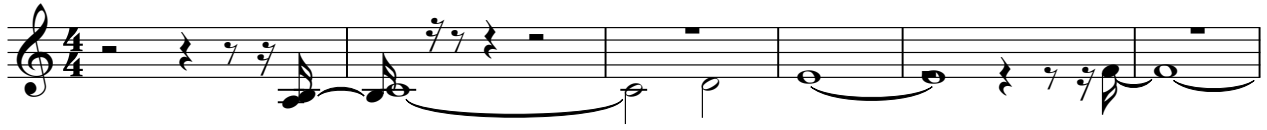


A musical staff with a treble clef. It contains a complex chord structure with a slur over it, spanning across the first two measures.

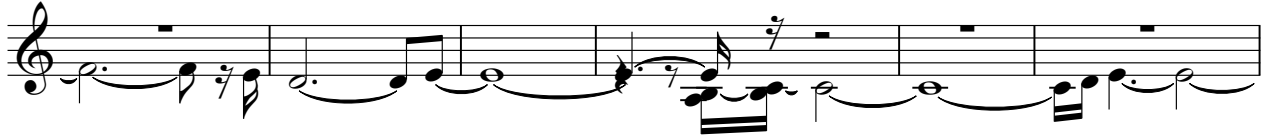
# Evangelica - Alto Preco

new

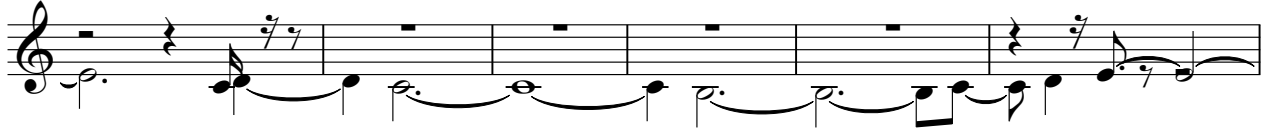
♩ = 120,000000



7



13



19



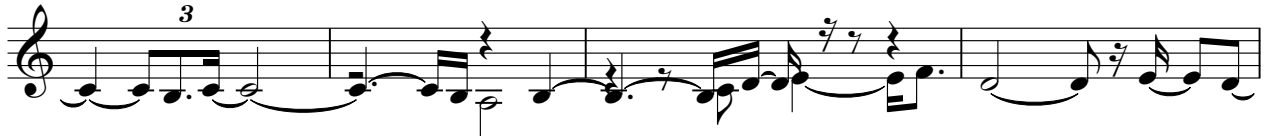
24



28



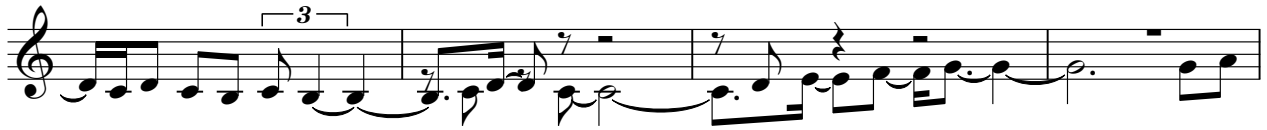
32



36



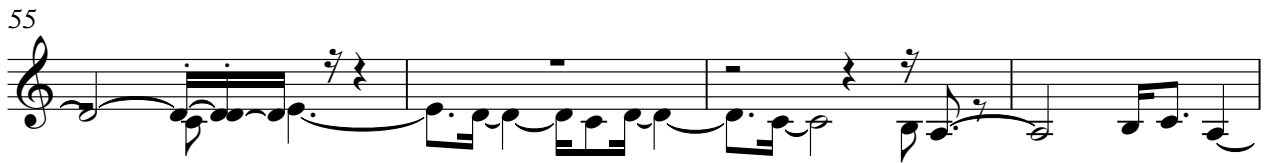
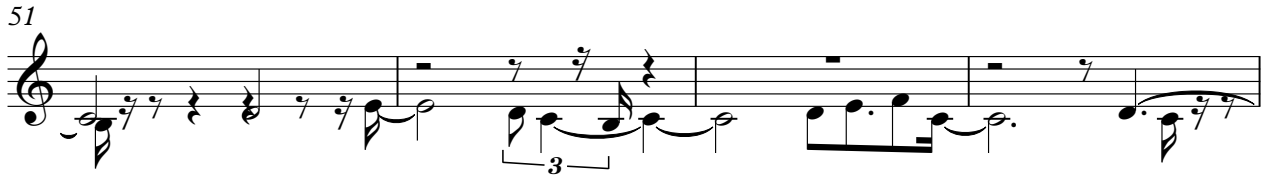
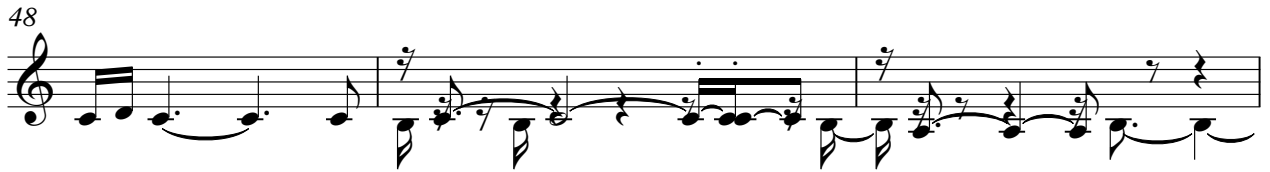
40



44



V.S.



# Evangelica - Alto Preco

new

♩ = 120,000000

7

11

15

19

22

26

31

35

39

V.S.

43 new

47

51

54

58

62

66

70

74

78

# Evangelica - Alto Preco

new

♩ = 120,000000

5

10

14

18

22

25

29

33

37

V.S.



2

41

new

45

49

53

57

60

64

67

71

75

79

A musical score for guitar, consisting of a single staff with a bass clef. The score is divided into four measures. The first measure contains a series of six vertical lines representing fretted notes, with a flat symbol (b) above the second line. The second measure contains a series of six vertical lines representing fretted notes, with a flat symbol (b) above the second line. The third measure contains a series of six vertical lines representing fretted notes, with the word "new" written above the second line. The fourth measure contains a series of six vertical lines representing fretted notes. The score ends with a double bar line. The number "3" is written in the top right corner of the page.

3

# Evangelica - Alto Preco

new

♩ = 120,000000

The image displays a musical score for the piece "Evangelica - Alto Preco". The score is written in 4/4 time and consists of ten staves of music. The tempo is indicated as ♩ = 120,000000. The notation includes various rhythmic values, including eighth and sixteenth notes, and rests. There are several triplet markings (indicated by a '3' over a bracket) and some fermatas. The score is arranged in a system with ten staves, each starting with a measure number: 4, 6, 8, 9, 11, 12, 14, 16, and 18. The music is primarily composed of chords and melodic lines. The key signature has one sharp (F#), and the time signature is 4/4. The score ends with a double bar line and the initials "V.S." to the right.

V.S.

Musical score for guitar, measures 20-37. The score is written in treble clef with a key signature of one flat (B-flat). It features a complex, multi-voice texture with many beamed notes and chords. Measure 20 starts with a series of beamed eighth notes. Measure 21 includes a triplet of eighth notes. Measure 23 has a triplet of eighth notes. Measure 24 features a triplet of eighth notes and a triplet of sixteenth notes. Measure 26 has a triplet of eighth notes. Measure 28 includes a triplet of eighth notes. Measure 30 has a triplet of eighth notes. Measure 33 has a triplet of eighth notes. Measure 35 has a triplet of eighth notes. Measure 37 has a triplet of eighth notes. The score is densely packed with notes, often with multiple stems per measure, suggesting a complex harmonic or contrapuntal structure.

Musical score for guitar, measures 39-54. The score is written on a single staff in treble clef. It features a complex rhythmic pattern with frequent rests and slurs. Measure 39 starts with a rest followed by a quarter note. Measures 40-42 contain a series of eighth notes with slurs and triplets. Measure 43 has a quarter note followed by a rest and then eighth notes. Measure 44 features a triplet of eighth notes followed by eighth notes. Measure 45 has a quarter note followed by eighth notes. Measure 46 has a quarter note followed by eighth notes. Measure 47 has a quarter note followed by eighth notes. Measure 48 has a quarter note followed by eighth notes. Measure 49 has a quarter note followed by eighth notes. Measure 50 has a quarter note followed by eighth notes. Measure 51 has a quarter note followed by eighth notes. Measure 52 has a quarter note followed by eighth notes. Measure 53 has a quarter note followed by eighth notes. Measure 54 has a quarter note followed by eighth notes. The score includes various musical notations such as slurs, triplets, and rests.

V.S.

Musical score for guitar, measures 56-72. The score is written in treble clef with a key signature of one flat (B-flat). It features a complex rhythmic pattern with many sixteenth and thirty-second notes, often beamed together. Measure 56 starts with a B-flat. Measures 58, 62, and 64 contain triplets. Measure 64 also features a triplet of eighth notes. Measure 70 contains a triplet of eighth notes. Measure 72 ends with a B-flat. The score includes various articulation marks such as slurs and accents.

74



76



78



80

