

Evil That Men Do - Iron Maiden

♩ = 132,000137
Drums

Drums

Guitar 1

Guitar 2

Bass

Vocals

5

Drums

Guitar 2

Bass

9

Drums

Guitar 2

Bass

Copyright © 1997 by Saltine [PC]
All Rights Reserved

13 ♩ = 164,000290

Drums
Guitar 1
Guitar 2
Bass

This system covers measures 13 to 16. The tempo is marked as ♩ = 164,000290. The Drums part features a snare drum on the first and third beats of each measure, with a cymbal on the second and fourth. The Guitar 1 part is mostly silent, with some chords appearing in the final two measures. The Guitar 2 part plays a melodic line with eighth notes and some chords. The Bass part plays a simple bass line with quarter notes.

17

Drums
Guitar 1
Guitar 2
Bass

This system covers measures 17 to 19. The Drums part has a more active pattern with snare and cymbal. The Guitar 1 part plays a complex melodic line with many chords and some double stops. The Guitar 2 part plays a rhythmic pattern with eighth notes and chords. The Bass part plays a steady eighth-note bass line.

20

Drums
Guitar 1
Guitar 2
Bass

This system covers measures 20 to 22. The Drums part continues with a consistent pattern. The Guitar 1 part features a melodic line with many chords and some double stops. The Guitar 2 part plays a rhythmic pattern with eighth notes and chords. The Bass part plays a steady eighth-note bass line.

23 3

Drums
Guitar 1
Guitar 2
Bass

This musical score covers measures 23 to 25. It features four staves: Drums, Guitar 1, Guitar 2, and Bass. The key signature is one sharp (F#). Measure 23 shows a drum pattern with a snare on the second and fourth beats, and a cymbal on the first and third. Guitar 1 has a long sustain over the first two measures. Guitar 2 plays a rhythmic pattern of eighth notes. The Bass line consists of a steady eighth-note pattern.

25

Drums
Guitar 1
Guitar 2
Bass
Vocals

This musical score covers measures 25 to 27. It features five staves: Drums, Guitar 1, Guitar 2, Bass, and Vocals. The key signature is one sharp (F#). Measure 25 shows a drum pattern with a snare on the second and fourth beats, and a cymbal on the first and third. Guitar 1 and Guitar 2 play a rhythmic pattern of eighth notes. The Bass line consists of a steady eighth-note pattern. The Vocals line has two phrases, each marked with a '6' and a slur, indicating a sixteenth-note run.

27

Drums

Guitar 1

Guitar 2

Bass

Vocals

29

Drums

Guitar 1

Guitar 2

Bass

Vocals

31

Drums

Guitar 1

Guitar 2

Bass

Vocals

3

Detailed description: This block contains the musical score for measures 31 and 32. The score is arranged in five staves: Drums, Guitar 1, Guitar 2, Bass, and Vocals. The key signature is one sharp (F#). The drum part features a consistent pattern of quarter notes on the snare and bass drums, with occasional hi-hat patterns. The guitar parts consist of dense chordal textures, primarily using power chords and triads. The bass line provides a steady eighth-note accompaniment. The vocal line begins with a triplet of eighth notes in measure 31 and remains silent in measure 32.

33

Drums

Guitar 1

Guitar 2

Bass

Vocals

Detailed description: This block contains the musical score for measures 33 and 34. The score is arranged in five staves: Drums, Guitar 1, Guitar 2, Bass, and Vocals. The key signature is one sharp (F#). The drum part continues with a similar pattern to the previous measures. The guitar parts maintain their dense chordal textures. The bass line continues with eighth-note accompaniment. The vocal line begins in measure 33 with a series of eighth and quarter notes, including a half-note phrase in measure 34.

35

Drums

Guitar 1

Guitar 2

Bass

Vocals

Detailed description: This musical score covers measures 35 and 36. The Drums part features a consistent pattern of quarter notes on the snare and bass drum. Guitar 1 and 2 play a dense, rhythmic accompaniment of eighth-note chords. The Bass line consists of a steady eighth-note pattern. The Vocals part begins in measure 36 with a melodic line starting on a whole note.

37

Drums

Guitar 1

Guitar 2

Bass

Vocals

Detailed description: This musical score covers measures 37 and 38. The Drums part continues with a similar pattern but includes a cymbal crash at the start of measure 37. The guitar parts maintain their rhythmic accompaniment. The Bass line continues with eighth notes. The Vocals part continues its melodic line across both measures.

39

Drums

Guitar 1

Guitar 2

Bass

Vocals

42

Drums

Guitar 1

Guitar 2

Bass

Vocals

45

Drums

Guitar 1

Guitar 2

Bass

Vocals

48

Drums

Guitar 1

Guitar 2

Bass

Vocals

51

Drums

Guitar 1

Guitar 2

Bass

Vocals

Detailed description: This block contains the musical notation for measures 51, 52, and 53. The score is arranged in five staves: Drums, Guitar 1, Guitar 2, Bass, and Vocals. The key signature is one sharp (F#). The Drums part features a consistent pattern of eighth notes with occasional accents. Guitar 1 plays a complex, rhythmic lead with many beamed notes. Guitar 2 plays a melodic line with some slurs. The Bass part consists of a steady eighth-note accompaniment. The Vocals part has a few notes in measure 52 and 53, with rests in measures 51 and 53.

54

Drums

Guitar 1

Guitar 2

Bass

Vocals

Detailed description: This block contains the musical notation for measures 54, 55, and 56. The notation continues from the previous block. The Drums part maintains its eighth-note pattern. Guitar 1 continues with its intricate lead. Guitar 2 plays a melodic line. The Bass part continues with its eighth-note accompaniment. The Vocals part has a few notes in measure 54 and 56, with a rest in measure 55.

57

Drums

Guitar 1

Guitar 2

Bass

Vocals

Detailed description: This block contains the musical score for measures 57 through 60. It features five staves: Drums, Guitar 1, Guitar 2, Bass, and Vocals. The key signature is one sharp (F#). The drum part shows a complex pattern with asterisks indicating specific techniques. Guitar 1 and 2 play intricate melodic and harmonic lines. The bass line provides a steady rhythmic foundation. The vocal line consists of a few notes with some rests.

60

Drums

Guitar 1

Guitar 2

Bass

Vocals

Detailed description: This block contains the musical score for measures 61 through 64. It features five staves: Drums, Guitar 1, Guitar 2, Bass, and Vocals. The key signature is one sharp (F#). The drum part continues with a similar pattern to the previous block. Guitar 1 and 2 play dense, rhythmic patterns. The bass line maintains a consistent groove. The vocal line features a melodic phrase with a long note.

62

Drums

Guitar 1

Guitar 2

Bass

Vocals

Detailed description: This system of musical notation covers measures 62 and 63. The Drums part features a consistent pattern of quarter notes on the snare and bass drum, with occasional cymbal accents. Guitar 1 and 2 play a complex, fast-moving chordal accompaniment with many beamed notes. The Bass line provides a steady eighth-note accompaniment. The Vocals part begins with a rest in measure 62 and starts singing in measure 63 with a melodic line.

64

Drums

Guitar 1

Guitar 2

Bass

Vocals

Detailed description: This system of musical notation covers measures 64 and 65. The Drums part continues with the established pattern. The guitar parts maintain their intricate accompaniment. The Bass line continues with eighth notes. The Vocals part continues the melodic line from the previous system, featuring a long note in measure 65.

66

Drums

Guitar 1

Guitar 2

Bass

Vocals

68

Drums

Guitar 1

Guitar 2

Bass

Vocals

70

Drums

Guitar 1

Guitar 2

Bass

Vocals

Detailed description: This system of music covers measures 70 and 71. The Drums part features a consistent pattern of quarter notes on the snare and bass drum, with occasional cymbal accents. Guitar 1 and 2 play a complex, rhythmic accompaniment with many beamed eighth and sixteenth notes. The Bass line provides a steady, walking bass pattern. The Vocals part begins with a rest in measure 70 and then enters in measure 71 with a melodic line consisting of quarter and eighth notes.

72

Drums

Guitar 1

Guitar 2

Bass

Vocals

Detailed description: This system of music covers measures 72 and 73. The Drums part continues with the established pattern, including some cymbal accents. The guitar parts maintain their intricate, rhythmic accompaniment. The Bass line continues its steady, walking pattern. The Vocals part continues its melodic line, which includes a long, sustained note in measure 73.

74

Drums

Guitar 1

Guitar 2

Bass

Vocals

Detailed description: This system covers measures 74 and 75. The Drums part features a consistent pattern of quarter notes on the snare and bass drum. Guitar 1 and 2 play a complex, syncopated chordal accompaniment with many beamed eighth notes. The Bass line consists of a steady eighth-note pattern. The Vocals part begins with a melodic phrase in measure 74, followed by a rest in measure 75.

76

Drums

Guitar 1

Guitar 2

Bass

Vocals

Detailed description: This system covers measures 76 and 77. The Drums part continues with the same snare and bass drum pattern. The guitar parts (Guitar 1 and 2) maintain their complex, syncopated accompaniment. The Bass line continues with its eighth-note pattern. The Vocals part continues the melodic line from the previous system across both measures.

78

Drums

Guitar 1

Guitar 2

Bass

Vocals

Detailed description: This musical score covers measures 78 and 79. The Drums part features a consistent pattern of eighth notes on the snare and bass drum. Guitar 1 and 2 play a complex, fast-moving chordal accompaniment with many beamed notes. The Bass line provides a steady eighth-note accompaniment. The Vocals part is mostly silent in measure 78, with a few notes appearing in measure 79.

80

Drums

Guitar 1

Guitar 2

Bass

Vocals

Detailed description: This musical score covers measures 80 and 81. The Drums part continues with the same eighth-note pattern. Guitar 1 and 2 maintain their complex chordal accompaniment. The Bass line continues with eighth notes. The Vocals part has a more active line in measure 80, with several notes and rests, and then concludes in measure 81.

82

Drums

Guitar 1

Guitar 2

Bass

Vocals

Detailed description: This system of music covers measures 82 and 83. The Drums part features a consistent pattern of quarter notes on the snare and bass drum. Guitar 1 and 2 play a complex, syncopated chordal texture with many beamed notes. The Bass line consists of eighth notes. The Vocals part is mostly silent in measure 82 and begins in measure 83 with a few notes.

84

Drums

Guitar 1

Guitar 2

Bass

Vocals

Detailed description: This system of music covers measures 84 and 85. The Drums part continues with the same pattern as in the previous system. Guitar 1 and 2 play a dense, rhythmic chordal accompaniment. The Bass line continues with eighth notes. The Vocals part has a few notes in measure 84 and then a longer phrase in measure 85.

86

Drums

Guitar 1

Guitar 2

Bass

Vocals

Detailed description: This system of music covers measures 86 and 87. The Drums part features a consistent pattern of quarter notes on the snare and bass drum. Guitar 1 and 2 play a complex, syncopated rhythm with many beamed eighth notes and some triplets. The Bass line consists of a steady eighth-note pattern. The Vocals part has a melodic line with some slurs and rests.

88

Drums

Guitar 1

Guitar 2

Bass

Vocals

Detailed description: This system of music covers measures 88 and 89. The Drums part continues with the same pattern as in the previous system. Guitar 1 and 2 play a dense, rhythmic accompaniment with many beamed eighth notes. The Bass line continues with the eighth-note pattern. The Vocals part has a melodic line with some slurs and rests.

90

Drums

Guitar 1

Guitar 2

Bass

Vocals

Detailed description: This system of music covers measures 90, 91, and 92. The Drums part features a consistent pattern of quarter notes on the snare and bass drum, with occasional hi-hat patterns. Guitar 1 and 2 play a melodic line with a mix of eighth and quarter notes, including some double-stops and bends. The Bass line provides a steady eighth-note accompaniment. The Vocals part has a few notes in measure 90 and then rests for the remainder of the system.

93

Drums

Guitar 1

Guitar 2

Bass

Vocals

Detailed description: This system of music covers measures 93, 94, and 95. The Drums part continues with a similar pattern to the previous system. Guitar 1 and 2 play a melodic line with a mix of eighth and quarter notes, including some double-stops and bends. The Bass line provides a steady eighth-note accompaniment. The Vocals part has a few notes in measure 93 and then rests for the remainder of the system.

96

Drums

Guitar 1

Guitar 2

Bass

Vocals

99

Drums

Guitar 1

Guitar 2

Bass

Vocals

20

102

Drums

Guitar 1

Guitar 2

Bass

Vocals

Detailed description: This musical score covers measures 102 and 103. The Drums part features a consistent pattern of quarter notes on the snare and bass drum, with occasional cymbal accents. Guitar 1 and 2 play a complex, rhythmic pattern of eighth and sixteenth notes, often in a syncopated fashion. The Bass line provides a steady eighth-note accompaniment. The Vocals part begins with a melodic line in measure 102, followed by a long, sustained note in measure 103.

104

Drums

Guitar 1

Guitar 2

Bass

Vocals

Detailed description: This musical score covers measures 104 and 105. The Drums part continues with the established pattern. Guitar 1 and 2 maintain their intricate rhythmic patterns. The Bass line remains consistent with eighth-note accompaniment. The Vocals part features a melodic line in measure 104, followed by a rest in measure 105.

106

Drums

Guitar 1

Guitar 2

Bass

Vocals

108

Drums

Guitar 1

Guitar 2

Bass

Vocals

110

Drums

Guitar 1

Guitar 2

Bass

Vocals

Detailed description: This musical score covers measures 110 and 111. The key signature is one sharp (F#). The drums part features a consistent pattern of quarter notes on the snare and bass drum, with occasional cymbal accents. Guitar 1 and 2 play a complex, rhythmic pattern of eighth and sixteenth notes, often in a syncopated fashion. The bass line provides a steady accompaniment with a mix of eighth and quarter notes. The vocal line begins with a melodic phrase in measure 110, followed by a long, sustained note in measure 111.

112

Drums

Guitar 1

Guitar 2

Bass

Vocals

Detailed description: This musical score covers measures 112 and 113. The key signature remains one sharp (F#). The drums continue with the established pattern. Guitar 1 and 2 play a dense, rhythmic texture of eighth and sixteenth notes. The bass line maintains a steady accompaniment. The vocal line features a melodic phrase in measure 112, followed by a rest in measure 113, and then continues with a melodic line in measure 114.

114

Drums

Guitar 1

Guitar 2

Bass

Vocals

Detailed description: This system of music covers measures 114 and 115. The Drums part features a consistent pattern of quarter notes on the snare and bass drum, with occasional cymbal accents. Guitar 1 and 2 play a complex, syncopated rhythm with many beamed eighth and sixteenth notes. The Bass line provides a steady accompaniment with quarter notes. The Vocals part shows a melodic line with a long, sustained note in measure 115.

116

Drums

Guitar 1

Guitar 2

Bass

Vocals

Detailed description: This system of music covers measures 116 and 117. The Drums part continues with a similar pattern to the previous system. Guitar 1 and 2 play a complex, syncopated rhythm with many beamed eighth and sixteenth notes, including a triplet in measure 117. The Bass line provides a steady accompaniment with quarter notes. The Vocals part shows a melodic line with a long, sustained note in measure 116.

118

Drums

Guitar 1

Guitar 2

Bass

Detailed description: This system covers measures 118 and 119. The key signature is one sharp (F#). The drum part features a steady quarter-note pattern. Guitar 1 plays a simple accompaniment with chords and single notes. Guitar 2 has a more complex line with triplets and sixteenth-note runs. The bass line provides a steady eighth-note accompaniment.

120

Drums

Guitar 1

Guitar 2

Bass

Detailed description: This system covers measures 120 and 121. The drum part includes a snare drum flourish in measure 120. Guitar 1 continues with accompaniment, featuring a sixteenth-note run in measure 121. Guitar 2 maintains its intricate line with triplets and sixteenth-note patterns. The bass line continues with eighth-note accompaniment.

122

Drums

Guitar 1

Guitar 2

Bass

Detailed description: This system covers measures 122 and 123. The drum part features a snare drum flourish in measure 122. Guitar 1 plays a continuous sixteenth-note run. Guitar 2 continues with its complex line, including triplets and sixteenth-note runs. The bass line continues with eighth-note accompaniment.

124

Drums

Guitar 1

Guitar 2

Bass

Detailed description: This system covers measures 124 and 125. The Drums part features a consistent pattern of quarter notes on the snare and bass drum, with a cymbal flourish in measure 125. Guitar 1 plays a steady eighth-note pattern. Guitar 2 includes triplet and sextuplet figures. The Bass line consists of a continuous eighth-note sequence.

126

Drums

Guitar 1

Guitar 2

Bass

Detailed description: This system covers measures 126 and 127. The Drums part continues with the established pattern. Guitar 1 maintains its eighth-note texture. Guitar 2 features a triplet in measure 126 and a sextuplet in measure 127. The Bass line continues with eighth notes, showing a slight melodic variation in measure 127.

128

Drums

Guitar 1

Guitar 2

Bass

Detailed description: This system covers measures 128 and 129. The Drums part has a cymbal flourish in measure 129. Guitar 1 continues with eighth notes. Guitar 2 has a sextuplet in measure 128 and a more complex melodic line in measure 129. The Bass line continues with eighth notes.

130

Drums

Guitar 1

Guitar 2

Bass

6

7

7

Detailed description: This system covers measures 130, 131, and 132. The drums play a consistent pattern of quarter notes on the snare and bass drum. Guitar 1 features a melodic line with eighth notes and some ties. Guitar 2 plays a complex, rhythmic accompaniment with many beamed eighth notes and some triplets. The bass line is a steady eighth-note pattern.

133

Drums

Guitar 1

Guitar 2

Bass

3

Detailed description: This system covers measures 133, 134, and 135. The drums continue with the same pattern. Guitar 1 has a more active melodic line with frequent eighth notes. Guitar 2 features a prominent triplet in measure 134. The bass line remains a steady eighth-note pattern.

135

Drums

Guitar 1

Guitar 2

Bass

3

Detailed description: This system covers measures 135, 136, and 137. The drums play the same pattern. Guitar 1 continues its melodic line. Guitar 2 has a triplet in measure 136. The bass line is a steady eighth-note pattern.

138

Drums

Guitar 1

Guitar 2

Bass

Detailed description: This system covers measures 138, 139, and 140. The drums play a consistent pattern of quarter notes on the snare and bass drum. Guitar 1 features a melodic line with a triplet of eighth notes in measure 138. Guitar 2 provides a harmonic accompaniment with chords and single notes. The bass line consists of a steady eighth-note pattern.

141

Drums

Guitar 1

Guitar 2

Bass

Detailed description: This system covers measures 141, 142, and 143. The drums continue their pattern. Guitar 1 has a melodic line with a sextuplet of eighth notes in measure 141. Guitar 2 plays a complex accompaniment with many beamed notes. The bass line continues with eighth notes.

144

Drums

Guitar 1

Guitar 2

Bass

Vocals

Detailed description: This system covers measures 144, 145, and 146. The drums play the same pattern. Guitar 1 has a melodic line. Guitar 2 plays a complex accompaniment. The bass line continues with eighth notes. A vocal line is introduced in measure 145, starting with a quarter note followed by eighth notes.

147

Drums

Guitar 1

Guitar 2

Bass

Vocals

Detailed description: This block contains the musical notation for measures 147 through 150. It features five staves: Drums, Guitar 1, Guitar 2, Bass, and Vocals. The key signature is one sharp (F#). The Drums staff shows a complex pattern of eighth and sixteenth notes with some rests. Guitar 1 has a melodic line with many beamed eighth notes. Guitar 2 has a similar melodic line. The Bass staff has a steady eighth-note accompaniment. The Vocals staff has sparse notes with rests.

150

Drums

Guitar 1

Guitar 2

Bass

Vocals

Detailed description: This block contains the musical notation for measures 150 through 153. It features five staves: Drums, Guitar 1, Guitar 2, Bass, and Vocals. The key signature is one sharp (F#). The Drums staff continues with a complex pattern. Guitar 1 has a melodic line with some grace notes. Guitar 2 has a melodic line with some grace notes. The Bass staff has a steady eighth-note accompaniment. The Vocals staff has sparse notes with rests.

153

Drums

Guitar 1

Guitar 2

Bass

Vocals

Detailed description: This musical score covers measures 153 and 154. The drums part features a consistent pattern of quarter notes on the snare and bass drum. Guitar 1 and 2 play a complex, fast-moving chordal accompaniment with many beamed eighth notes. The bass line consists of a steady eighth-note pattern. The vocal line has a melodic contour with some slurs and rests.

155

Drums

Guitar 1

Guitar 2

Bass

Vocals

Detailed description: This musical score covers measures 155 and 156. The drums part continues with a similar pattern but includes some variations in the snare and bass drum placement. The guitar parts maintain their complex, fast-moving accompaniment. The bass line continues with its eighth-note pattern. The vocal line features a long, sustained note at the beginning of measure 155, followed by a melodic line with some rests.

30

157

Drums

Guitar 1

Guitar 2

Bass

Vocals

159

Drums

Guitar 1

Guitar 2

Bass

Vocals

161

Drums

Guitar 1

Guitar 2

Bass

Vocals

Detailed description: This musical score covers measures 161 and 162. The drums part features a consistent pattern of quarter notes on the snare and bass drum. Guitar 1 and 2 play a complex, fast-moving melodic line with many beamed eighth notes. The bass line consists of a steady eighth-note pattern. The vocal line has a few notes with a long slur over them, indicating a sustained note.

163

Drums

Guitar 1

Guitar 2

Bass

Vocals

Detailed description: This musical score covers measures 163 and 164. The drums part continues with a similar pattern but includes some variations in the snare and bass drum placement. Guitar 1 and 2 play a complex, fast-moving melodic line with many beamed eighth notes. The bass line consists of a steady eighth-note pattern. The vocal line has a few notes with a long slur over them, indicating a sustained note.

165

Drums

Guitar 1

Guitar 2

Bass

Vocals

Detailed description: This musical score block covers measures 165 and 166. It features five staves: Drums, Guitar 1, Guitar 2, Bass, and Vocals. The key signature is one sharp (F#). The Drums staff shows a consistent pattern of eighth notes. Guitars 1 and 2 play a complex, rhythmic pattern of eighth notes, often beamed together. The Bass line consists of eighth notes. The Vocals line features a melodic line with some slurs and a final note in measure 166.

167

Drums

Guitar 1

Guitar 2

Bass

Vocals

Detailed description: This musical score block covers measures 167 and 168. It features five staves: Drums, Guitar 1, Guitar 2, Bass, and Vocals. The key signature is one sharp (F#). The Drums staff shows a pattern of eighth notes with some accents. Guitars 1 and 2 play a complex, rhythmic pattern of eighth notes, often beamed together. The Bass line consists of eighth notes. The Vocals line features a melodic line with a long slur across measures 167 and 168, and a final note in measure 168.

169

Drums

Guitar 1

Guitar 2

Bass

Vocals

Detailed description: This system of music covers measures 169 and 170. The Drums part features a consistent pattern of eighth notes on the snare and bass drum. Guitar 1 plays a complex, fast-moving eighth-note melody. Guitar 2 provides a steady accompaniment with chords and single notes. The Bass line consists of a rhythmic eighth-note pattern. The Vocals part shows a melodic line with some rests and a final note in measure 170.

171

Drums

Guitar 1

Guitar 2

Bass

Vocals

Detailed description: This system of music covers measures 171 and 172. The Drums part continues with a similar pattern but includes some variations in the snare and bass drum placement. Guitar 1 plays a dense, rhythmic accompaniment with many chords. Guitar 2 has a more sparse part with some chords and single notes. The Bass line maintains its eighth-note pattern. The Vocals part continues the melodic line from the previous system, ending with a rest in measure 172.

173

Drums

Guitar 1

Guitar 2

Bass

Vocals

Detailed description: This musical score covers measures 173 and 174. The Drums part features a consistent pattern of eighth notes on the snare and bass drum. Guitar 1 plays a complex, fast-moving line with many sixteenth notes and some triplets. Guitar 2 provides a steady accompaniment with eighth notes. The Bass line is a simple eighth-note pattern. The Vocals part consists of a few notes with long, sweeping phrasing lines.

175

Drums

Guitar 1

Guitar 2

Bass

Vocals

Detailed description: This musical score covers measures 175 and 176. The Drums part continues with a similar pattern but includes some variations in the snare and bass drum placement. Guitar 1's part is highly technical, featuring many sixteenth-note runs and some complex chordal textures. Guitar 2 continues with eighth-note accompaniment. The Bass line remains a steady eighth-note pattern. The Vocals part has a few more notes with long, sweeping phrasing lines.

177

Drums

Drum notation for measures 177-180. Measure 177 features a snare drum hit. Measure 178 is a rest. Measure 179 contains a hi-hat pattern with eighth notes. Measure 180 contains a snare drum hit followed by a hi-hat pattern.

Guitar 1

Guitar 1 notation for measures 177-180. Measure 177 has a sixteenth-note run with a '6' below it. Measure 178 has a triplet of eighth notes with a '3' above it. Measure 179 has a triplet of eighth notes with a '3' above it. Measure 180 has a quarter-note chord.

Guitar 2

Guitar 2 notation for measures 177-180. Measure 177 has a sixteenth-note run with a '6' below it. Measure 178 has a triplet of eighth notes with a '3' above it. Measure 179 has a triplet of eighth notes with a '3' above it. Measure 180 has a quarter-note chord.

Bass

Bass notation for measures 177-180. Measure 177 is a rest. Measure 178 is a rest. Measure 179 has a quarter-note bass line. Measure 180 has a quarter-note bass line.

Evil That Men Do - Iron Maiden

Drums

♩ = 132,000137
Drums

10

♩ = 164,000290

18

23

28

33

38

43

48

53

Copyright © 1997 by Saltine [PC]
All Rights Reserved

V.S.

58

62

66

70

74

79

84

89

94

99

104

108

112

116

121

125

129

133

137

141

146

151

156

160

164

168

172

176

Evil That Men Do - Iron Maiden

Guitar 1

♩ = 132,000137 ♩ = 164,000290

Guitar 1 15

20

25

28

31

34

37

40

45

49

Copyright © 1997 by Saltine [PC]
All Rights Reserved

V.S.

Guitar 1

84

87

90

95

99

102

105

108

111

114

V.S.

117

6

122

6

125

6

128

6

132

3

135

3

140

6

145

149

153

Guitar 1

156

159

162

165

168

171

174

177

Evil That Men Do - Iron Maiden

Guitar 2

♩ = 132,000137
Guitar 2

5

10

15

20

24

27

30

33

36

Copyright © 1997 by Saltine [PC]
All Rights Reserved

V.S.

39

43

47

51

55

59

62

65

68

71

74

77

80

83

86

89

93

97

101

104

107

110

113

116

119

122

125

128

131

134

Guitar 2

138

141

145

149

153

156

159

162

165

168

6

172

Guitar 2

177

Evil That Men Do - Iron Maiden

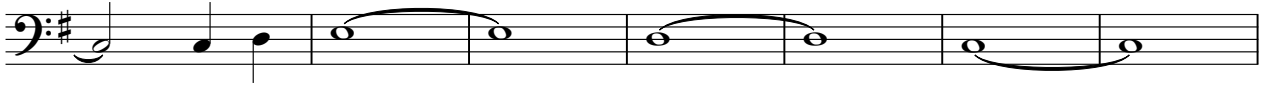
Bass

♩ = 132,000137
Bass



10

♩ = 164,000290



17



20



23



26



29



32



35



38



Copyright © 1997 by Saltine [PC]
All Rights Reserved

V.S.

41



44



47



50



53



56



59



62



65



68



71



74



77



80



83



86



89



92



95



98



V.S.

101



167



Evil That Men Do - Iron Maiden

Vocals

♩ = 132,000137 ♩ = 164,000290

Vocals

15 9 6 6

27

32

37

42

47

52

57

62

67

Copyright © 1997 by Saltine [PC]
All Rights Reserved

V.S.

72

77

82

87

92

97

102

107

112

117

28

