

F-Zero - Red Canyon

♩ = 140,000137

Staff-2: Treble clef, 4/4 time signature. Contains a melodic line with quarter and eighth notes.

Staff-4: Treble clef, 4/4 time signature. Contains a guitar-style accompaniment with 'x' marks above the staff and rhythmic patterns.

Staff-1: Treble clef, 4/4 time signature. Contains a whole rest.

Staff: Bass clef, 4/4 time signature. Contains a melodic line with quarter and eighth notes.

Staff-3: Treble clef, 4/4 time signature. Contains a whole rest.

Staff-5: Treble clef, 4/4 time signature. Contains a whole rest.

Tempo: ♩ = 140,000137



Staff-2: Treble clef, 4/4 time signature. Contains a melodic line with quarter and eighth notes.

Staff-4: Treble clef, 4/4 time signature. Contains a guitar-style accompaniment with 'x' marks above the staff and rhythmic patterns.

Staff-1: Treble clef, 4/4 time signature. Contains a whole rest followed by a melodic line with a slur.

Staff: Bass clef, 4/4 time signature. Contains a melodic line with quarter and eighth notes.

Original Melody- "Red Canyon," from F-Zero

4

Staff-2

Staff-4

Staff-1

Staff

Staff-3

Staff-5



6

Staff-2

Staff-4

Staff

Staff-3

Staff-5

8

Staff-2

Staff-4

Staff-1

Staff

Staff-3

Staff-5



10

Staff-2

Staff-4

Staff-1

Staff

Staff-3

Staff-5

12

Staff-2

Staff-4

Staff-1

Staff

Staff-3

Staff-5



14

Staff-2

Staff-4

Staff

Staff-3

Staff-5

16

Staff-2

Staff-4

Staff-1

Staff

Staff-3

Staff-5



18

Staff-2

Staff-4

Staff-1

Staff

Staff-3

Staff-5

20

Staff-2: Treble clef, guitar-like notation with stems and flags.

Staff-4: Treble clef, guitar-like notation with stems and flags, and 'x' marks above the staff.

Staff-1: Treble clef, contains rests.

Staff: Bass clef, contains a melodic line with a long note in measure 21.

Staff-3: Treble clef, contains rests.

Staff-5: Treble clef, contains rests.



22

Staff-2: Treble clef, guitar-like notation with stems and flags.

Staff-4: Treble clef, guitar-like notation with stems and flags, and 'x' marks above the staff.

Staff-1: Treble clef, contains rests.

Staff: Bass clef, contains a melodic line.

Staff-3: Treble clef, contains rests.

Staff-5: Treble clef, contains rests.

24

Staff-2

Staff-4

Staff

Staff-3

Staff-5



26

Staff-2

Staff-4

Staff

Staff-3

Staff-5

28

Staff-2

Staff-4

Staff

Staff-3

Staff-5



30

Staff-2

Staff-4

Staff

Staff-3

Staff-5

32

Staff-2

Staff-4

Staff

Staff-3

Staff-5



34

Staff-2

Staff-4

Staff-1

Staff

36

Staff-2: Treble clef, contains a melodic line with eighth and sixteenth notes.

Staff-4: Treble clef, contains a guitar-style accompaniment with 'x' marks above the staff.

Staff-1: Treble clef, contains a melodic line with a long note in the second measure.

Staff: Bass clef, contains a bass line with eighth and sixteenth notes.



38

Staff-2: Treble clef, contains a melodic line with eighth and sixteenth notes.

Staff-4: Treble clef, contains a guitar-style accompaniment with 'x' marks above the staff.

Staff-1: Treble clef, contains a melodic line that is mostly empty.

Staff: Bass clef, contains a bass line with eighth and sixteenth notes.

Staff-3: Treble clef, contains a melodic line with eighth notes and rests.

Staff-5: Treble clef, contains a melodic line with eighth notes and rests.

40

Staff-2: Treble clef, melody with eighth and quarter notes.
Staff-4: Treble clef, guitar-style notation with 'x' marks for fretted notes.
Staff: Bass clef, bass line with eighth and quarter notes.
Staff-3: Treble clef, accompaniment with eighth notes and rests.
Staff-5: Treble clef, accompaniment with eighth notes and rests.



42

Staff-2: Treble clef, melody with eighth and quarter notes.
Staff-4: Treble clef, guitar-style notation with 'x' marks for fretted notes.
Staff-1: Treble clef, accompaniment with eighth notes and rests.
Staff: Bass clef, bass line with eighth and quarter notes, including a long note with a slur.
Staff-3: Treble clef, accompaniment with eighth notes and rests.
Staff-5: Treble clef, accompaniment with eighth notes and rests.

44

Staff-2: Treble clef, guitar-like notation with stems and flags.

Staff-4: Treble clef, guitar-like notation with stems and flags.

Staff-1: Treble clef, mostly empty.

Staff: Bass clef, melodic line with eighth and sixteenth notes.

Staff-3: Treble clef, melodic line with rests and notes.

Staff-5: Treble clef, melodic line with rests and notes.



46

Staff-2: Treble clef, guitar-like notation with stems and flags.

Staff-4: Treble clef, guitar-like notation with stems and flags.

Staff-1: Treble clef, mostly empty.

Staff: Bass clef, melodic line with eighth and sixteenth notes.

Staff-3: Treble clef, melodic line with rests and notes.

Staff-5: Treble clef, melodic line with rests and notes.

48

Staff-2

Staff-4

Staff

Staff-3

Staff-5



50

Staff-2

Staff-4

Staff-1

Staff

Staff-3

Staff-5

52

Staff-2: Treble clef, guitar-like notation with a double bar line at the start.

Staff-4: Treble clef, guitar-like notation with 'x' marks above notes.

Staff-1: Treble clef, mostly empty.

Staff: Bass clef, melodic line.

Staff-3: Treble clef, melodic line with rests.

Staff-5: Treble clef, melodic line with rests.



54

Staff-2: Treble clef, guitar-like notation with a double bar line at the start.

Staff-4: Treble clef, guitar-like notation with 'x' marks above notes.

Staff-1: Treble clef, melodic line with a long slur.

Staff: Bass clef, melodic line.

Staff-3: Treble clef, melodic line with rests.

Staff-5: Treble clef, melodic line with rests.

56

Staff-2

Staff-4

Staff-1

Staff

Staff-3

Staff-5



58

Staff-2

Staff-4

Staff

Staff-3

Staff-5

60

Staff-2

Staff-4

Staff

Staff-3

Staff-5



62

Staff-2

Staff-4

Staff

Staff-3

Staff-5

64

Staff-2: Treble clef, contains a melodic line with eighth and quarter notes.

Staff-4: Treble clef, contains a guitar-style accompaniment with 'x' marks above the staff.

Staff: Bass clef, contains a bass line with eighth and quarter notes.

Staff-3: Treble clef, contains a melodic line with eighth and quarter notes.

Staff-5: Treble clef, contains a melodic line with eighth and quarter notes.



66

Staff-2: Treble clef, contains a melodic line with eighth and quarter notes.

Staff-4: Treble clef, contains a guitar-style accompaniment with 'x' marks above the staff.

Staff: Bass clef, contains a bass line with eighth and quarter notes.

Staff-3: Treble clef, contains a melodic line with eighth and quarter notes.

Staff-5: Treble clef, contains a melodic line with eighth and quarter notes.



68

Staff-2: Treble clef, contains a melodic line with eighth and quarter notes.

Staff-4: Treble clef, contains a guitar-style accompaniment with 'x' marks above the staff.

♩ = 140,000137



Original Melody- "Red Canyon," from F-Zero

V.S.

2

Staff-2

48



53



58



63



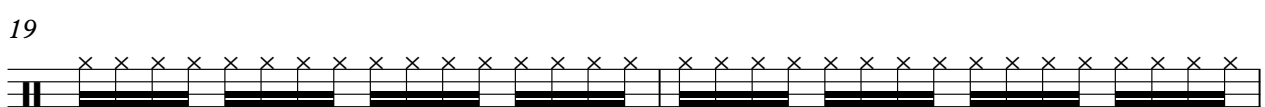
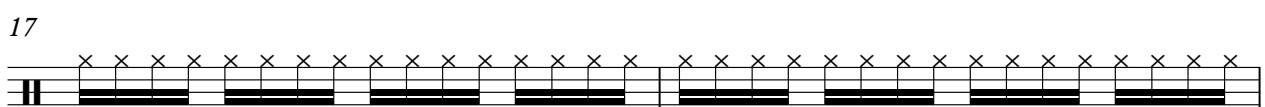
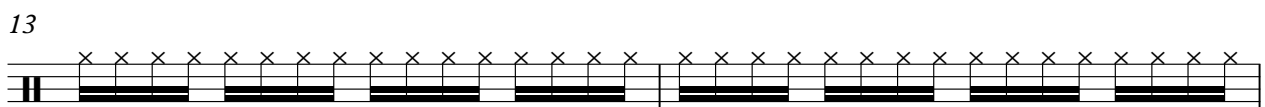
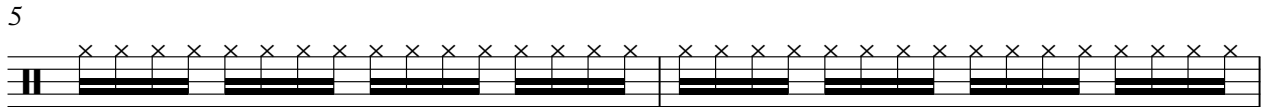
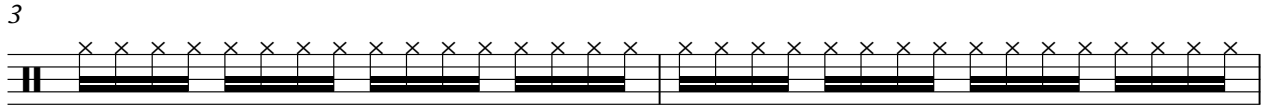
66



F-Zero - Red Canyon

Staff-4

♩ = 140,000137



Original Melody- "Red Canyon," from F-Zero

V.S.

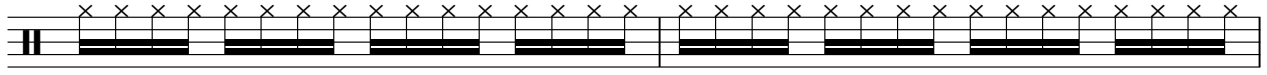
2

Staff-4

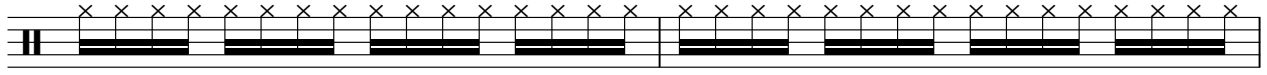
21



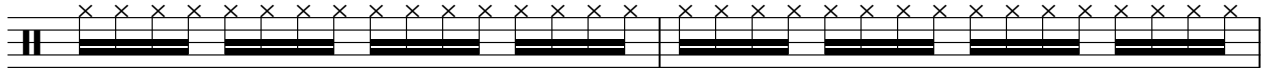
23



25



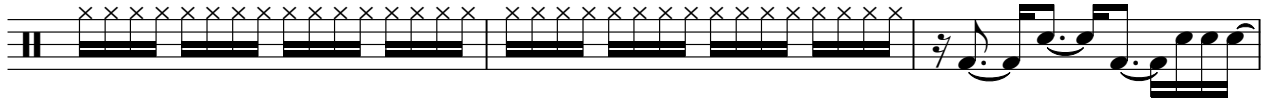
27



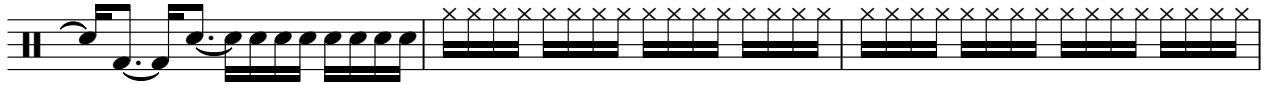
29



31



34



37



39



41



43



45



47



49



51



53



55



57



59



61



V.S.

4

Staff-4

63



65



67



F-Zero - Red Canyon

Staff-1

♩ = 140,000137

10

20

37

47

54

Original Melody- "Red Canyon," from F-Zero

F-Zero - Red Canyon

Staff

♩ = 140,000137

4

7

10

13

16

19

22

25

28

Original Melody- "Red Canyon," from F-Zero

V.S.

31

2

36

39

42

45

48

51

54

57

60

Staff

3

63



65



♩ = 140,000137

4

8

12

16

19

23

27

30

6

Original Melody- "Red Canyon," from F-Zero

39

43

47

50

53

57

61

64

F-Zero - Red Canyon

Staff-5

♩ = 140,000137

4

8

12

16

19

23

27

30

6

Original Melody- "Red Canyon," from F-Zero

