

F-Zero Climax - Big Blue

♩ = 125,000000

Staff-1: Treble clef, 4/4 time, contains a melodic line with eighth notes and a star symbol above the first measure.

Staff-2: Treble clef, 4/4 time, contains a rhythmic accompaniment of eighth notes.

Staff: Treble clef, 4/4 time, contains a complex accompaniment of eighth notes.

Staff-5: Treble clef, 4/4 time, contains a whole rest.

Staff-3: Bass clef, 4/4 time, contains a rhythmic accompaniment of eighth notes.

Staff-4: Treble clef, 4/4 time, contains a whole rest.

Staff-6: Bass clef, 4/4 time, contains a whole rest.

Staff-7: Bass clef, 4/4 time, contains a whole rest.



3

Staff-1: Treble clef, 4/4 time, contains a melodic line with eighth notes and a star symbol above the first measure.

Staff-2: Treble clef, 4/4 time, contains a rhythmic accompaniment of eighth notes.

Staff: Treble clef, 4/4 time, contains a complex accompaniment of eighth notes.

Staff-3: Bass clef, 4/4 time, contains a rhythmic accompaniment of eighth notes.

From F-Zero: Climax
Original Melody- "Big Blue"

5

Staff-1: Treble clef, guitar notation with asterisks and diamond symbols above notes.

Staff-2: Treble clef, guitar notation with diamond symbols above notes.

Staff: Treble clef, piano accompaniment with chords and eighth notes.

Staff-3: Bass clef, piano accompaniment with eighth notes.

Staff-4: Treble clef, piano accompaniment with eighth notes.



7

Staff-1: Treble clef, guitar notation with asterisks and diamond symbols above notes.

Staff-2: Treble clef, guitar notation with diamond symbols above notes.

Staff: Treble clef, piano accompaniment with chords and eighth notes.

Staff-5: Treble clef, piano accompaniment with rests and a final note.

Staff-3: Bass clef, piano accompaniment with eighth notes.

Staff-4: Treble clef, piano accompaniment with eighth notes.

9

Staff-1: Treble clef, guitar-like notation with diamond-shaped notes and a star-like symbol above the first note. A fermata is placed over the first measure.

Staff-2: Treble clef, guitar-like notation with diamond-shaped notes.

Staff: Treble clef, piano accompaniment with chords and sixteenth notes.

Staff-5: Treble clef, piano accompaniment with chords and sixteenth notes.

Staff-3: Bass clef, piano accompaniment with chords and sixteenth notes.

Staff-4: Treble clef, piano accompaniment with a long note in the first measure and a rest in the second.



11

Staff-1: Treble clef, guitar-like notation with diamond-shaped notes and a star-like symbol above the first note. A fermata is placed over the first measure.

Staff-2: Treble clef, guitar-like notation with diamond-shaped notes.

Staff: Treble clef, piano accompaniment with chords and sixteenth notes.

Staff-5: Treble clef, piano accompaniment with chords and sixteenth notes.

Staff-3: Bass clef, piano accompaniment with chords and sixteenth notes.

Staff-6: Bass clef, piano accompaniment with a long note in the first measure and a rest in the second.

Staff-7: Bass clef, piano accompaniment with a long note in the first measure and a rest in the second.

13

Staff-1: Treble clef, contains a series of eighth notes with a star symbol above the first measure.

Staff-2: Treble clef, contains eighth notes.

Staff: Treble clef, contains a complex melodic line with many accidentals.

Staff-5: Treble clef, contains a complex melodic line with many accidentals.

Staff-3: Bass clef, contains eighth notes.

Staff-6: Bass clef, contains a complex melodic line with many accidentals.

Staff-7: Bass clef, contains a complex melodic line with many accidentals.



15

Staff-1: Treble clef, contains a series of eighth notes with a star symbol above the first measure.

Staff-2: Treble clef, contains eighth notes.

Staff: Treble clef, contains a complex melodic line with many accidentals.

Staff-5: Treble clef, contains a complex melodic line with many accidentals.

Staff-3: Bass clef, contains eighth notes.

Staff-6: Bass clef, contains a complex melodic line with many accidentals.

Staff-7: Bass clef, contains a complex melodic line with many accidentals.

17

Staff-1

Staff-2

Staff

Staff-5

Staff-3

Staff-6



18

Staff-1

Staff-2

Staff

Staff-5

Staff-3

Staff-6

19

Staff-1
Staff-2
Staff
Staff-5
Staff-3
Staff-6
Staff-7



21

Staff-1
Staff-2
Staff
Staff-5
Staff-3
Staff-6
Staff-7

23

Staff-1: Treble clef, guitar-like notation with diamond-shaped flags and asterisks. Measure 23 has a sharp sign on the first line. Measure 24 has asterisks on the first and second lines.

Staff-2: Treble clef, guitar-like notation with diamond-shaped flags. Measure 23 has a sharp sign on the first line. Measure 24 has a sharp sign on the first line.

Staff: Treble clef, piano-like notation. Measure 23 has a sharp sign on the first line. Measure 24 has a sharp sign on the first line.

Staff-5: Treble clef, piano-like notation. Measure 23 has a sharp sign on the first line. Measure 24 has a sharp sign on the first line.

Staff-3: Bass clef, piano-like notation. Measure 23 has a sharp sign on the first line. Measure 24 has a sharp sign on the first line.

Staff-6: Bass clef, guitar-like notation with diamond-shaped flags and slurs. Measure 23 has a sharp sign on the first line. Measure 24 has a sharp sign on the first line.

Staff-7: Bass clef, guitar-like notation with diamond-shaped flags. Measure 23 has a sharp sign on the first line. Measure 24 has a sharp sign on the first line.



25

Staff-1: Treble clef, guitar-like notation with diamond-shaped flags and asterisks. Measure 25 has a sharp sign on the first line. Measure 26 has a sharp sign on the first line.

Staff-2: Treble clef, guitar-like notation with diamond-shaped flags. Measure 25 has a sharp sign on the first line. Measure 26 has a sharp sign on the first line.

Staff: Treble clef, piano-like notation. Measure 25 has a sharp sign on the first line. Measure 26 has a sharp sign on the first line.

Staff-5: Treble clef, piano-like notation. Measure 25 has a sharp sign on the first line. Measure 26 has a sharp sign on the first line.

Staff-3: Bass clef, piano-like notation. Measure 25 has a sharp sign on the first line. Measure 26 has a sharp sign on the first line.

Staff-6: Bass clef, guitar-like notation with diamond-shaped flags. Measure 25 has a sharp sign on the first line. Measure 26 has a sharp sign on the first line.

Staff-7: Bass clef, guitar-like notation with diamond-shaped flags. Measure 25 has a sharp sign on the first line. Measure 26 has a sharp sign on the first line.

27

Staff-1: Treble clef, guitar notation with a star symbol and diamond-shaped flags above the notes.

Staff-2: Treble clef, guitar notation with diamond-shaped flags above the notes.

Staff: Treble clef, piano accompaniment with a key signature of two sharps (F# and C#).

Staff-5: Treble clef, piano accompaniment.

Staff-3: Bass clef, piano accompaniment.

Staff-6: Bass clef, guitar notation with diamond-shaped flags above the notes.

Staff-7: Bass clef, guitar notation with diamond-shaped flags above the notes.



29

Staff-1: Treble clef, guitar notation with a star symbol and diamond-shaped flags above the notes.

Staff-2: Treble clef, guitar notation with diamond-shaped flags above the notes.

Staff: Treble clef, piano accompaniment with a key signature of two sharps (F# and C#).

Staff-5: Treble clef, piano accompaniment with sixteenth-note runs and fingerings '6' and '3' indicated below the notes.

Staff-3: Bass clef, piano accompaniment.

30

Staff-1: Treble clef, guitar-like notation with diamond-shaped flags on notes. Measure 30 has a double bar line, and measure 31 has an asterisk above the first note.

Staff-2: Treble clef, guitar-like notation with diamond-shaped flags on notes.

Staff: Treble clef, piano notation with various accidentals (b, #).

Staff-5: Treble clef, piano notation with various accidentals (b, #).

Staff-3: Bass clef, piano notation with various accidentals (b, #).

Staff-6: Bass clef, piano notation with various accidentals (b, #).



32

Staff-1: Treble clef, guitar-like notation with diamond-shaped flags on notes. Measure 32 has a double bar line, and measure 33 has an asterisk above the first note.

Staff-2: Treble clef, guitar-like notation with diamond-shaped flags on notes.

Staff: Treble clef, piano notation with various accidentals (b, #).

Staff-5: Treble clef, piano notation with various accidentals (b, #).

Staff-3: Bass clef, piano notation with various accidentals (b, #).

Staff-4: Treble clef, piano notation with various accidentals (b, #).

Staff-6: Bass clef, piano notation with various accidentals (b, #).

Staff-7: Bass clef, piano notation with various accidentals (b, #).

34

Staff-1: Treble clef, guitar notation with asterisks and diamond symbols. Measure 34 has two asterisks, measure 35 has one. Staff-2: Treble clef, guitar notation. Staff: Treble clef, piano accompaniment with chords and eighth notes. Staff-5: Treble clef, piano accompaniment with a whole rest. Staff-3: Bass clef, piano accompaniment with eighth notes. Staff-6: Bass clef, guitar notation with a diamond symbol and a whole rest.



36

Staff-1: Treble clef, guitar notation with asterisks and diamond symbols. Measure 36 has two asterisks, measure 37 has one. Staff-2: Treble clef, guitar notation. Staff: Treble clef, piano accompaniment with chords and eighth notes. Staff-3: Bass clef, piano accompaniment with eighth notes. Staff-4: Treble clef, piano accompaniment with eighth notes.

38

Staff-1: Treble clef, guitar-like notation with asterisks above notes.
Staff-2: Treble clef, guitar-like notation.
Staff: Treble clef, piano accompaniment with chords.
Staff-3: Bass clef, piano accompaniment with chords.
Staff-4: Treble clef, piano accompaniment with chords.



40

Staff-1: Treble clef, guitar-like notation with asterisks above notes.
Staff-2: Treble clef, guitar-like notation.
Staff: Treble clef, piano accompaniment with chords.
Staff-5: Treble clef, piano accompaniment with chords.
Staff-3: Bass clef, piano accompaniment with chords.
Staff-4: Treble clef, piano accompaniment with chords.

42

Staff-1: Treble clef, rhythmic pattern of eighth notes with diamond-shaped accents. Measure 43 has an asterisk above the first note.

Staff-2: Treble clef, eighth-note accompaniment.

Staff: Treble clef, chordal accompaniment with a key signature of one flat.

Staff-5: Treble clef, melodic line with slurs and accidentals.

Staff-3: Bass clef, eighth-note accompaniment.

Staff-4: Treble clef, mostly empty staff with a few notes.



44

Staff-1: Treble clef, rhythmic pattern with diamond-shaped accents. Measure 45 has an asterisk above the first note.

Staff-2: Treble clef, eighth-note accompaniment.

Staff: Treble clef, chordal accompaniment with a key signature of one flat.

Staff-5: Treble clef, melodic line with slurs and accidentals.

Staff-3: Bass clef, eighth-note accompaniment.

Staff-6: Bass clef, melodic line with slurs and accidentals.

Staff-7: Bass clef, melodic line with slurs and accidentals.

46

Staff-1: Treble clef, rhythmic pattern of eighth notes with diamond-shaped accents. Measure 47 has an asterisk above the first note.

Staff-2: Treble clef, rhythmic pattern of eighth notes.

Staff: Treble clef, chordal accompaniment with a key signature of one flat.

Staff-5: Treble clef, melodic line with slurs and accidentals.

Staff-3: Bass clef, rhythmic pattern of eighth notes.

Staff-6: Bass clef, melodic line with slurs and accidentals.

Staff-7: Bass clef, melodic line with slurs and accidentals.

48

Staff-1: Treble clef, rhythmic pattern of eighth notes with diamond-shaped accents. Measure 49 has an asterisk above the first note.

Staff-2: Treble clef, rhythmic pattern of eighth notes.

Staff: Treble clef, chordal accompaniment with a key signature of one flat.

Staff-5: Treble clef, melodic line with slurs and accidentals.

Staff-3: Bass clef, rhythmic pattern of eighth notes.

Staff-6: Bass clef, melodic line with slurs and accidentals.

Staff-7: Bass clef, melodic line with slurs and accidentals.

50

Staff-1: Treble clef, contains rests and asterisks. Measure 50 has an asterisk above the staff.

Staff-2: Treble clef, contains eighth notes.

Staff: Treble clef, contains chords and melodic lines.

Staff-5: Treble clef, contains chords.

Staff-3: Bass clef, contains eighth notes.

Staff-6: Bass clef, contains eighth notes and chords.



51

Staff-1: Treble clef, contains rests and asterisks. Measure 51 has an asterisk above the staff.

Staff-2: Treble clef, contains eighth notes.

Staff: Treble clef, contains chords and melodic lines.

Staff-5: Treble clef, contains chords.

Staff-3: Bass clef, contains eighth notes.

Staff-6: Bass clef, contains eighth notes and chords.

Staff-7: Bass clef, contains eighth notes.

53

Staff-1: Treble clef, contains a sequence of eighth notes with an asterisk above the first note.

Staff-2: Treble clef, contains a sequence of eighth notes.

Staff: Treble clef, contains a sequence of eighth notes with various accidentals.

Staff-5: Treble clef, contains a sequence of eighth notes with various accidentals.

Staff-3: Bass clef, contains a sequence of quarter notes with various accidentals.

Staff-6: Bass clef, contains a whole note with a sharp sign.

Staff-7: Bass clef, contains a whole note with a sharp sign.

55

Staff-1: Treble clef, contains a sequence of eighth notes with asterisks above the first and last notes.

Staff-2: Treble clef, contains a sequence of eighth notes.

Staff: Treble clef, contains a sequence of quarter notes with various accidentals.

Staff-5: Treble clef, contains a whole note with a sharp sign.

Staff-3: Bass clef, contains a sequence of quarter notes with various accidentals.

Staff-6: Bass clef, contains a sequence of eighth notes with various accidentals.

Staff-7: Bass clef, contains a sequence of eighth notes with various accidentals.

57

Staff-1: Treble clef, contains a sequence of eighth notes with a star symbol above the first note.

Staff-2: Treble clef, contains a sequence of eighth notes.

Staff: Treble clef, contains a sequence of eighth notes.

Staff-5: Treble clef, contains a sequence of eighth notes.

Staff-3: Bass clef, contains a sequence of quarter notes.

Staff-6: Bass clef, contains a whole note with a sharp sign.

Staff-7: Bass clef, contains a whole note.



59

Staff-1: Treble clef, contains a sequence of eighth notes with a star symbol above the first note.

Staff-2: Treble clef, contains a sequence of eighth notes.

Staff: Treble clef, contains a sequence of quarter notes.

Staff-5: Treble clef, contains a sequence of quarter notes.

Staff-3: Bass clef, contains a sequence of quarter notes.

Staff-6: Bass clef, contains a sequence of eighth notes.

Staff-7: Bass clef, contains a sequence of eighth notes.

61

Staff-1: Treble clef, contains a whole note chord marked with an asterisk (*).

Staff-2: Treble clef, contains a rhythmic pattern of eighth notes.

Staff: Treble clef, contains a whole note chord.

Staff-5: Treble clef, contains a melodic line with sixteenth notes, including triplets (6) and a triplet (3).

Staff-3: Bass clef, contains a whole note chord.



62

Staff-1: Treble clef, contains a whole note chord marked with an asterisk (*).

Staff-2: Treble clef, contains a rhythmic pattern of eighth notes.

Staff: Treble clef, contains a melodic line with sixteenth notes and a fermata.

Staff-5: Treble clef, contains a melodic line with sixteenth notes and a fermata.

Staff-3: Bass clef, contains a whole note chord.

Staff-6: Bass clef, contains a melodic line with sixteenth notes.

64

Staff-1

Staff-2

Staff

Staff-5

Staff-3

Staff-4

Staff-6

Staff-7

66

Staff-1: Treble clef, contains rhythmic notation with asterisks above notes.

Staff-2: Treble clef, contains rhythmic notation.

Staff: Treble clef, contains dense chordal accompaniment.

Staff-5: Treble clef, contains a whole rest.

Staff-3: Bass clef, contains rhythmic notation.

Staff-4: Treble clef, contains a whole rest.

Staff-6: Bass clef, contains a whole rest.

Staff-7: Bass clef, contains a whole rest.

68

Staff-1: Treble clef, contains rhythmic notation with asterisks above notes.

Staff-2: Treble clef, contains rhythmic notation.

Staff: Treble clef, contains dense chordal accompaniment.

Staff-3: Bass clef, contains rhythmic notation.

Staff-4: Treble clef, contains melodic lines with accidentals.

Staff-7: Bass clef, contains a whole rest.

70

Staff-1: Treble clef, contains notes with asterisks above them. Measure 70 has four notes, measure 71 has four notes.

Staff-2: Treble clef, contains eighth notes. Measure 70 has four notes, measure 71 has four notes.

Staff: Treble clef, contains chords. Measure 70 has four chords, measure 71 has four chords.

Staff-3: Bass clef, contains eighth notes. Measure 70 has four notes, measure 71 has four notes.

Staff-4: Treble clef, contains eighth notes. Measure 70 has four notes, measure 71 has four notes.

Staff-7: Bass clef, contains whole rests for both measures.



72

Staff-1: Treble clef, contains notes with asterisks above them. Measure 72 has four notes, measure 73 has four notes.

Staff-2: Treble clef, contains eighth notes. Measure 72 has four notes, measure 73 has four notes.

Staff: Treble clef, contains chords. Measure 72 has four chords, measure 73 has four chords.

Staff-3: Bass clef, contains eighth notes. Measure 72 has four notes, measure 73 has four notes.

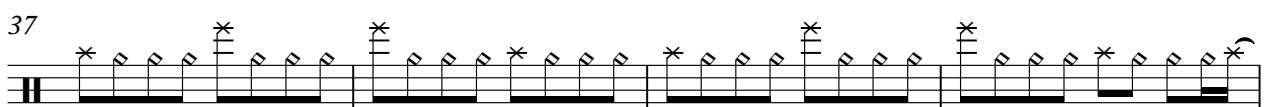
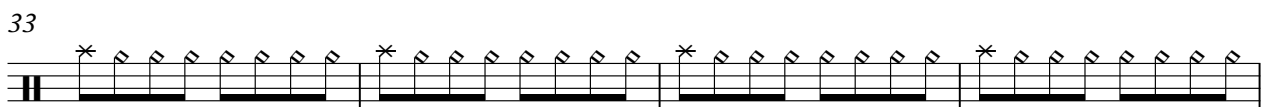
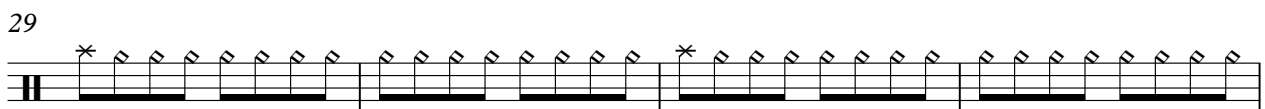
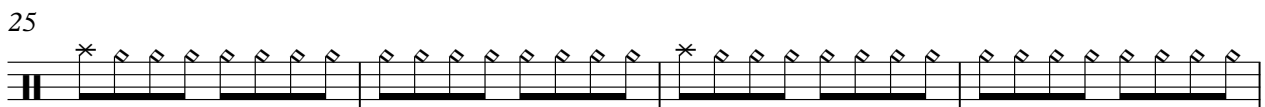
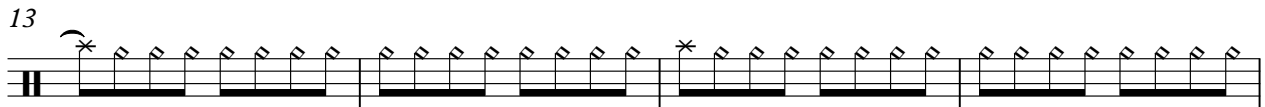
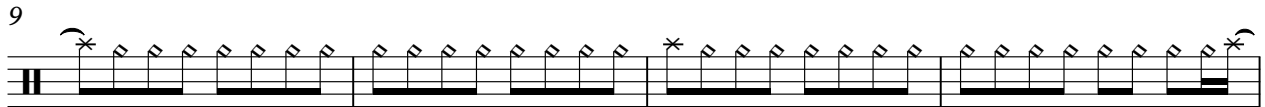
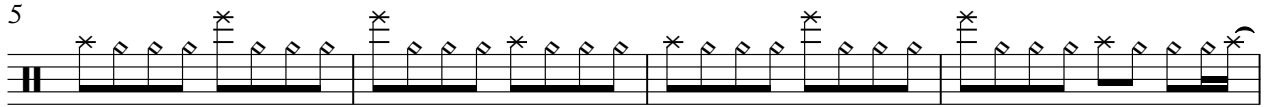
Staff-4: Treble clef, contains eighth notes. Measure 72 has four notes, measure 73 has four notes.

Staff-7: Bass clef, contains whole rests for both measures.

F-Zero Climax - Big Blue

Staff-1

♩ = 125,000000



From F-Zero: Climax
Original Melody- "Big Blue"

V.S.

Staff-2

F-Zero Climax - Big Blue

♩ = 125,000000



From F-Zero: Climax
Original Melody- "Big Blue"

V.S.

31



34



37



40



43



46



49



52



55



58



61



64



67



70



F-Zero Climax - Big Blue

Staff

♩ = 125,000000



3



5



7



9



11



13



15



17



19



From F-Zero Climax
Original Melody- "Big Blue"

V.S.

21

27

33

35

37

39

41

43

45

47

49



51



53



59



65



67



69



71



♩ = 125,000000

7

10

13

15

17

19

22

25

26

From F-Zero: Climax
Original Melody- "Big Blue"

Musical score for Staff-5, measures 29-60. The score is written in treble clef with a key signature of one sharp (F#). The notation includes various rhythmic values, accidentals, and articulation marks. Fingerings are indicated by numbers 1-5. Measure numbers 29, 31, 40, 43, 46, 49, 51, 54, 57, and 60 are marked at the beginning of their respective staves. The score features several sixteenth-note runs, some with slurs, and a triplet in measure 60. A measure rest is present in measure 40.

62 3

Staff 5

Musical notation for measures 62 and 63. Measure 62 starts with a treble clef and a key signature of two sharps (F# and C#). It contains a sequence of eighth and sixteenth notes. Measure 63 continues the melodic line with a slur over the first two notes. The staff is labeled 'Staff 5' above the notes.

64

Musical notation for measures 64 and 65. Measure 64 begins with a treble clef and a key signature of one flat (Bb). It features a sequence of notes, including a half note with a flat (Bb) and a half note with a flat (Bb). Measure 65 contains a whole note with a flat (Bb) and a whole note with a flat (Bb). The staff ends with a double bar line and a fermata. The number '7' is written below the staff at the end of measure 65.

F-Zero Climax - Big Blue

Staff-3

♩ = 125,000000



From F-Zero: Climax
Original Melody- "Big Blue"

V.S.

50



52



57



64



67



69



71



Staff-4

F-Zero Climax - Big Blue

$\text{♩} = 125,000000$

4

6

8

22

33

4

39

42

22

69

71

From F-Zero: Climax
Original Melody- "Big Blue"

44



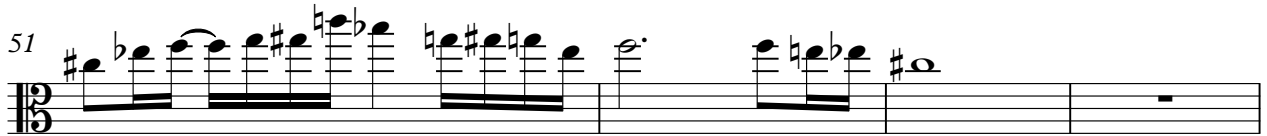
47



49



51



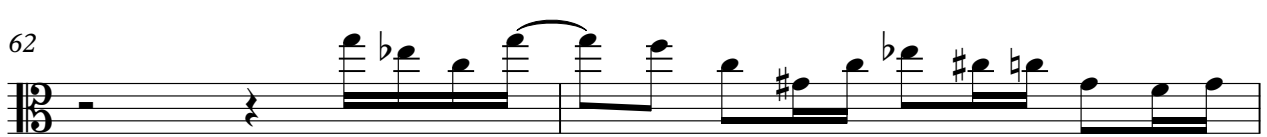
55



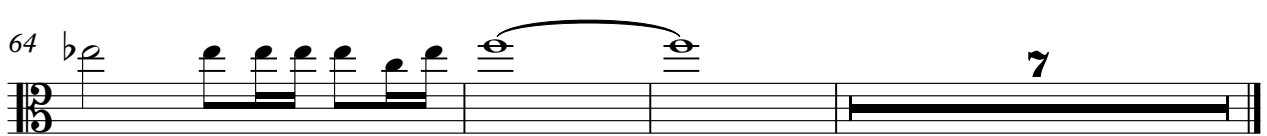
58



62



64



F-Zero Climax - Big Blue

Staff-7

♩ = 125,000000

11

14

16

24

33

46

48

56

65

From F-Zero: Climax
Original Melody- "Big Blue"