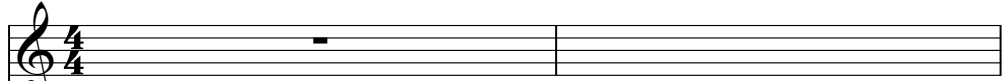


Fargetta - Music john steenbergen

♩ = 138,000198

PADS / BASSLINE

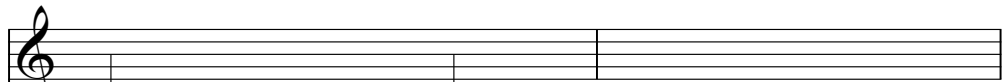


MELODY



3

PADS / BASSLINE

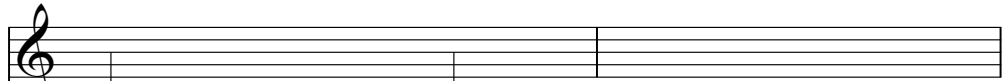


MELODY



5

PADS / BASSLINE

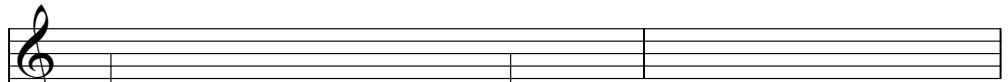


MELODY



7

PADS / BASSLINE

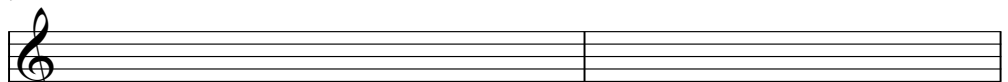


MELODY



9

PADS / BASSLINE



MELODY



11

PADS / BASSLINE

MELODY



13

PADS / BASSLINE

MELODY



15

PADS / BASSLINE

MELODY



17

PADS / BASSLINE

MELODY



Fargetta - Music john steenberg
PADS / BASSLINE

♩ = 138,000198

A musical staff in treble clef with a 4/4 time signature. The first measure contains a whole rest. The subsequent measures contain a sequence of notes: a dotted half note (G4), a quarter note (A4), a dotted half note (B4), a quarter note (C5), a dotted half note (D5), a quarter note (E5), a dotted half note (F5), a quarter note (G5), a dotted half note (A5), a quarter note (B5), a dotted half note (C6), a quarter note (D6), a dotted half note (E6), a quarter note (F6), a dotted half note (G6), a quarter note (A6), a dotted half note (B6), and a quarter note (C7). Slurs connect the notes in pairs: (G4, A4), (B4, C5), (D5, E5), (F5, G5), (A5, B5), (C6, D6), (E6, F6), (G6, A6), and (B6, C7).

10

A musical staff in treble clef. The first measure contains a whole rest. The subsequent measures contain a sequence of notes: a dotted half note (G4), a quarter note (A4), a dotted half note (B4), a quarter note (C5), a dotted half note (D5), a quarter note (E5), a dotted half note (F5), a quarter note (G5), a dotted half note (A5), a quarter note (B5), a dotted half note (C6), a quarter note (D6), a dotted half note (E6), a quarter note (F6), a dotted half note (G6), a quarter note (A6), a dotted half note (B6), and a quarter note (C7). Slurs connect the notes in pairs: (G4, A4), (B4, C5), (D5, E5), (F5, G5), (A5, B5), (C6, D6), (E6, F6), (G6, A6), and (B6, C7).

MELODY Fargetta - Music john steenbergen

♩ = 138,000198

