

Feuneuleu Prod - Crystal Ship Doors

♩ = 97,001053

star them

fretless

5

star them

fretless

7

star them

fretless

10

star them

fretless

13

star them

fretless

16

star them

fretless

19

star them

fretless

22

star them

fretless

25

star them

fretless

28

fretless

30

fretless

31

fretless

32

fretless

33
fretless

34
fretless

35
star them
fretless

36
star them
fretless

37
star them
fretless

38
star them
fretless

39
star them
fretless

40
star them
fretless

41
star them
fretless

42
star them
fretless

43
star them
fretless

44
star them
fretless

45
star them
fretless

46
fretless

47

fretless

48

star them

fretless

50

star them

fretless

51

star them

fretless

53

star them

fretless

55

star them

fretless

56

star them

fretless

6

58

star them

fretless

60

star them

fretless

Feuneuleu Prod - Crystal Ship Doors

star them

♩ = 97,001053

2

7

12

18

24

36

41

48

53

57

2

8

2

3

Feuneuleu Prod - Crystal Ship Doors

fretless

♩ = 97,001053

3



6



9



12



15



18



21



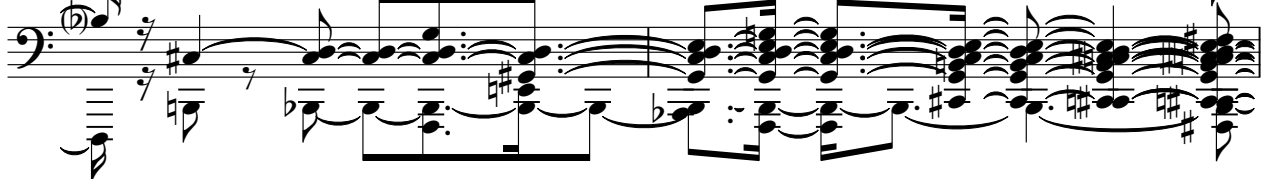
24



27



30



V.S.

2

fretless

32

Musical notation for measure 32, bass clef. The staff contains a melodic line starting with a flat (B-flat) and a complex bass accompaniment with many notes.

33

Musical notation for measure 33, bass clef. The staff continues the complex bass accompaniment with many notes.

34

Musical notation for measure 34, bass clef. The staff features a triplet of eighth notes in the upper voice.

35

Musical notation for measure 35, bass clef. The staff continues the complex bass accompaniment with many notes.

36

Musical notation for measure 36, bass clef. The staff continues the complex bass accompaniment with many notes.

37

Musical notation for measure 37, bass clef. The staff continues the complex bass accompaniment with many notes.

38

Musical notation for measure 38, bass clef. The staff continues the complex bass accompaniment with many notes.

39

Musical notation for measure 39, bass clef. The staff features a triplet of eighth notes in the upper voice.

40

Musical notation for measure 40, bass clef. The staff features a triplet of eighth notes in the upper voice.

41

Musical notation for measure 41, bass clef. The staff continues the complex bass accompaniment with many notes.

42

43

44

45

46

47

48

50

51

53

V.S.

4

fretless

55

Musical notation for measures 55 and 56. The piece is in 2/4 time and B-flat major. Measure 55 features a bass line with a half note G2, a quarter note A2, a quarter note Bb2, and a half note C3. The guitar part consists of a steady eighth-note accompaniment on the low strings. Measure 56 continues the bass line with a half note D3, a quarter note E3, a quarter note F3, and a half note G3. The guitar part continues with eighth notes, including some triplets.

57

Musical notation for measures 57 and 58. Measure 57 has a bass line with a half note A3, a quarter note Bb3, a quarter note C4, and a half note D4. The guitar part includes a triplet of eighth notes. Measure 58 continues with a bass line of a half note E4, a quarter note F4, a quarter note G4, and a half note A4. The guitar part continues with eighth notes and rests.

59

Musical notation for measures 59 and 60. Measure 59 has a bass line with a half note Bb4, a quarter note C5, a quarter note D5, and a half note E5. The guitar part continues with eighth notes. Measure 60 has a bass line with a half note F5, a quarter note G5, a quarter note A5, and a half note Bb5. The guitar part continues with eighth notes and rests.