

# Feuneuleu Prod - Shipwrecked Genesis

♩ = 88,001053

66

drum 26

82

31

36

♩ = 88,001053

51

4

drum 26

31

6

drum 26

82

31

36

51

8

drum 26

82

31

36

51

9

drum 26

82

31

36

51

10

drum 26

82

31

36

51

11

drum 26

82

31

36

51

This system contains measures 26 through 31. The drum part (26) features a steady eighth-note pattern. The guitar part (82) has a melodic line with a key signature change to one flat. The piano part (31) consists of chords with some accidentals. The bass part (36) plays a simple eighth-note line. The second guitar part (51) has a few notes, including a double bar line.

12

drum 26

82

31

36

51

This system contains measures 26 through 31. The drum part (26) continues with the eighth-note pattern. The guitar part (82) has a melodic line with a key signature change to one sharp. The piano part (31) features chords with various accidentals. The bass part (36) continues with the eighth-note line. The second guitar part (51) has a few notes, including a double bar line.

13

drum 26

82

31

36

51

14

66

drum 26

82

31

36

51

15

66

drum 26

82

31

36

51

17

66

drum 26

31

36

51

18

66

drum 26

31

36

51

19

66

drum 26

31

36

51

20

66

drum 26

31

36

51

21

66

drum 26

31

36

51



23

66

drum 26

82

31

36

51

25

66

drum 26

82

31

36

51

26

66

drum 26

82

31

36

51

27

66

drum 26

82

31

36

51

28

66

drum 26

82

31

36

51

29

66

drum 26

82

31

36

51

30

66

drum 26

82

31

36

51

31

66

drum 26

82

31

36

51

33

66

drum 26

31

36

51

34

66

drum 26

31

36

51

35

66

drum 26

31

36

51

37

66

drum 26

31

36

51

38

66

drum 26

82

31

36

51

40

66

drum 26

82

31

36

51

41

66

drum 26

82

31

36

51

Detailed description: This system contains measures 41 and 42. The top staff (66) is a guitar part in treble clef with a key signature of one flat. The drum part (26) is in a 2/4 time signature. The second guitar part (82) is in treble clef. The piano part (31) is in treble clef with a key signature of three sharps. The bass part (36) is in bass clef with a key signature of one sharp. The bottom guitar part (51) is in treble clef with a key signature of three sharps.

42

66

drum 26

82

31

36

51

Detailed description: This system continues measures 41 and 42. The top staff (66) is a guitar part in treble clef. The drum part (26) continues its pattern. The second guitar part (82) is in treble clef. The piano part (31) is in treble clef with a key signature of one flat. The bass part (36) is in bass clef with a key signature of one sharp. The bottom guitar part (51) is in treble clef with a key signature of one sharp.



43

66

drum 26

82

31

36

51

Detailed description: This system contains measures 43 and 44. The vocal line (66) features a melodic phrase starting with a half note G4, followed by quarter notes A4, B4, and C5. The drum part (26) shows a complex rhythmic pattern with eighth and sixteenth notes. The vocal line (82) has a half note G4. The guitar part (31) consists of a series of chords, including a D major triad and a D major dyad. The bass part (36) has a simple bass line with quarter notes G2, A2, B2, and C3. The vocal line (51) has a half note G4.

44

66

drum 26

82

31

36

51

Detailed description: This system contains measures 44 and 45. The vocal line (66) continues the melodic phrase with quarter notes D5, E5, and F5. The drum part (26) continues with a similar rhythmic pattern. The vocal line (82) has a half note G4. The guitar part (31) continues with chords, including a D major triad and a D major dyad. The bass part (36) continues with a simple bass line with quarter notes G2, A2, B2, and C3. The vocal line (51) has a half note G4.

45

66

drum 26

82

31

36

51

46

66

drum 26

82

31

36

51

47

66

drum 26

82

31

36

51

49

66

drum 26

82

31

36

51

50

66

drum 26

82

31

36

51

51

66

drum 26

82

31

36

51

52

66

drum 26

82

31

36

51

This system contains measures 66 through 82. The top staff (66) is in treble clef with a key signature of one sharp (F#). The drum staff (26) shows a complex rhythmic pattern with various note values and rests. The second guitar staff (82) is in treble clef with a key signature of one sharp. The bass staff (36) is in bass clef with a key signature of one sharp. The bottom guitar staff (51) is in treble clef with a key signature of one sharp. The music features a mix of eighth and sixteenth notes, some with slurs, and rests.

53

66

drum 26

82

31

36

51

This system contains measures 66 through 82. The top staff (66) is in treble clef with a key signature of one sharp. The drum staff (26) continues the rhythmic pattern from the previous system. The second guitar staff (82) is in treble clef with a key signature of one sharp. The bass staff (36) is in bass clef with a key signature of one sharp. The bottom guitar staff (51) is in treble clef with a key signature of one sharp. The music features a mix of eighth and sixteenth notes, some with slurs, and rests.

54

66

drum 26

82

31

36

51

55

drum 26

82

31

36

51

57

66

drum 26

82

31

36

51

Detailed description: This system of musical notation covers measures 57 to 66. It features five staves. The top staff (treble clef) contains a melodic line with various rhythmic values and accidentals. The second staff, labeled 'drum 26', shows a complex drum pattern with stems and 'x' marks. The third staff (treble clef) contains chordal accompaniment with some rests. The fourth staff (bass clef) has a steady eighth-note bass line. The fifth staff (treble clef) shows chordal accompaniment. Measure numbers 66, 82, 31, 36, and 51 are placed to the left of their respective staves.

59

66

drum 26

82

31

36

51

Detailed description: This system of musical notation covers measures 59 to 66. It features five staves. The top staff (treble clef) contains a melodic line with various rhythmic values and accidentals. The second staff, labeled 'drum 26', shows a complex drum pattern with stems and 'x' marks. The third staff (treble clef) contains chordal accompaniment with some rests. The fourth staff (bass clef) has a steady eighth-note bass line. The fifth staff (treble clef) shows chordal accompaniment. Measure numbers 66, 82, 31, 36, and 51 are placed to the left of their respective staves.

61

66

drum 26

82

31

36

51

Detailed description: This block contains the musical score for measures 61 through 66. It features five staves: a top staff with a treble clef and a key signature of one sharp (F#), a drum staff with a double bar line and various rhythmic notations, a second staff with a treble clef and a key signature of one sharp, a bass staff with a bass clef and a key signature of one sharp, and a bottom staff with a treble clef and a key signature of one sharp. The music includes melodic lines, chords, and a complex drum pattern.

62

66

drum 26

82

31

36

51

Detailed description: This block contains the musical score for measures 62 through 66. It features five staves: a top staff with a treble clef and a key signature of one sharp, a drum staff with a double bar line and various rhythmic notations, a second staff with a treble clef and a key signature of one sharp, a bass staff with a bass clef and a key signature of one sharp, and a bottom staff with a treble clef and a key signature of one sharp. The music includes melodic lines, chords, and a complex drum pattern.



64

drum 26

82

31

36

51

65

drum 26

82

31

36

51

66

drum 26

82

31

36

51

67

drum 26

82

31

36

51

68

drum 26

82

31

36

51

69

66

drum 26

82

31

36

51

71

66

drum 26

82

31

36

51

Detailed description: This system of music covers measures 66 through 82. It features five staves. The top staff (66) is a guitar staff in treble clef with a key signature of two sharps (F# and C#). The second staff (drum 26) is a drum set staff with a double bar line. The third staff (82) is a guitar staff in treble clef. The fourth and fifth staves (31 and 36) are piano staves, with the 31 staff in treble clef and the 36 staff in bass clef. The sixth staff (51) is a guitar staff in treble clef. The music includes various rhythmic patterns, including eighth and sixteenth notes, and rests.

73

66

drum 26

82

31

36

51

Detailed description: This system of music covers measures 66 through 82. It features five staves. The top staff (66) is a guitar staff in treble clef with a key signature of two sharps (F# and C#). The second staff (drum 26) is a drum set staff with a double bar line. The third staff (82) is a guitar staff in treble clef. The fourth and fifth staves (31 and 36) are piano staves, with the 31 staff in treble clef and the 36 staff in bass clef. The sixth staff (51) is a guitar staff in treble clef. The music includes various rhythmic patterns, including eighth and sixteenth notes, and rests.

74

66

drum 26

82

31

36

51

Detailed description: This system of musical notation covers measures 74 and 75. It features five staves. The top staff (treble clef) shows a melodic line with a whole rest in measure 74 and a quarter note in measure 75. The second staff (drum) contains a complex rhythmic pattern with various note values and rests. The third staff (treble clef) has a melodic line with a sharp sign. The fourth staff (bass clef) has a melodic line with a sharp sign. The fifth staff (treble clef) has a melodic line with a sharp sign.

75

66

drum 26

82

31

36

51

Detailed description: This system of musical notation covers measures 75 and 76. It features five staves. The top staff (treble clef) has a melodic line with a sharp sign. The second staff (drum) contains a complex rhythmic pattern with various note values and rests. The third staff (treble clef) has a melodic line with a sharp sign. The fourth staff (bass clef) has a melodic line with a sharp sign. The fifth staff (treble clef) has a melodic line with a sharp sign.

76

66

drum 26

82

31

36

51

77

66

drum 26

82

31

36

51

78

66

drum 26

82

31

36

51

79

66

drum 26

82

31

36

51

81

66

drum 26

82

31

36

51

Detailed description: This system of musical notation covers measures 81 and 82. It features five staves. The top staff (66) is a treble clef guitar staff with a key signature of one sharp (F#). The second staff (26) is a drum staff with a double bar line. The third staff (82) is a treble clef guitar staff with a key signature of one sharp. The fourth staff (31) is a treble clef guitar staff with a key signature of one sharp. The fifth staff (36) is a bass clef guitar staff with a key signature of one sharp. The sixth staff (51) is a treble clef guitar staff with a key signature of one sharp. The notation includes various rhythmic values, accidentals, and articulation marks.

82

66

drum 26

82

31

36

51

Detailed description: This system of musical notation covers measures 82 and 83. It features five staves. The top staff (66) is a treble clef guitar staff with a key signature of one sharp. The second staff (26) is a drum staff with a double bar line. The third staff (82) is a treble clef guitar staff with a key signature of one sharp. The fourth staff (31) is a treble clef guitar staff with a key signature of one sharp. The fifth staff (36) is a bass clef guitar staff with a key signature of one sharp. The sixth staff (51) is a treble clef guitar staff with a key signature of one sharp. The notation includes various rhythmic values, accidentals, and articulation marks.



83

66

drum 26

82

31

36

51

84

66

drum 26

82

31

36

51

85

66

drum 26

82

31

36

51

86

66

drum 26

82

31

36

51

87

66

drum 26

82

31

36

51

89

66

drum 26

82

31

36

51

91

66

drum 26

82

31

36

51

Detailed description: This system of musical notation covers measures 91 to 95. It features five staves. The top staff (treble clef) contains a melodic line with a whole rest in measure 91, followed by a half note G4 in measure 92, and a half note F#4 in measure 93. The second staff (drum) shows a rhythmic pattern of eighth notes. The third staff (treble clef) contains a complex chordal texture with many accidentals. The fourth staff (bass clef) has a simple bass line of quarter notes. The fifth staff (treble clef) has a few notes, including a whole note chord in measure 95.

92

66

drum 26

82

31

36

51

Detailed description: This system of musical notation covers measures 96 to 100. It features five staves. The top staff (treble clef) has a whole rest in measure 96, followed by a half note G4 in measure 97, and a half note F#4 in measure 98. The second staff (drum) shows a rhythmic pattern of eighth notes. The third staff (treble clef) contains a complex chordal texture with many accidentals. The fourth staff (bass clef) has a simple bass line of quarter notes. The fifth staff (treble clef) has a few notes, including a whole note chord in measure 100.

93

66

drum 26

82

31

36

51

94

66

drum 26

82

31

36

51

95

66

drum 26

82

31

36

51

Feuneuleu Prod - Shipwrecked Genesis

66

♩ = 88,001053

**13**

17

20

24

28

32

36

40

44

48

V.S.

52



58



61



70



75



79



84



89



93





Feuneuleu Prod - Shipwrecked Genesis

drum 26

♩ = 88,001053

2

5

8

10

12

14

16

18

20

22

V.S.

24



26



28



30



32



34



36



38



40



42



44



46



48



50



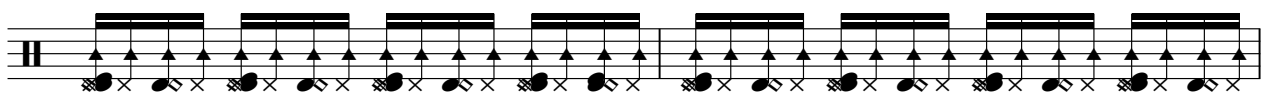
52



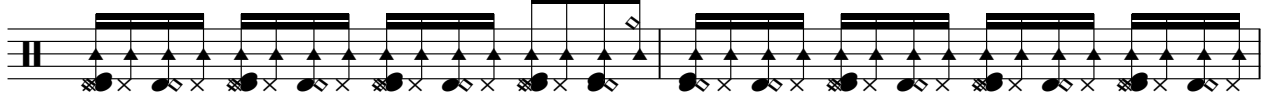
54



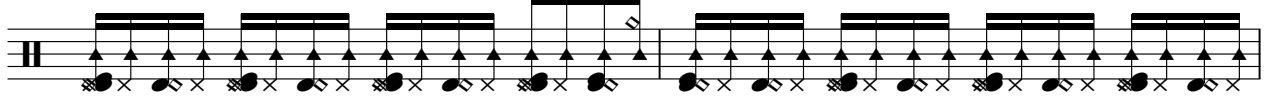
56



58



60



62



V.S.

64

66

68

70

72

74

76

78

80

82

84



86



88



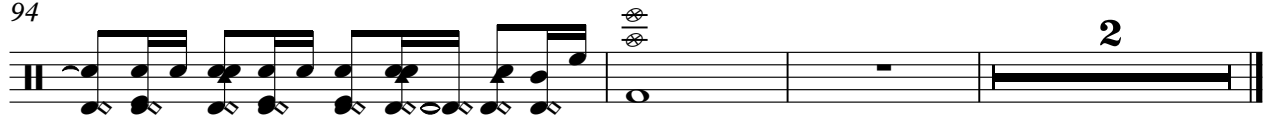
90



92



94



♩ = 88,001053

6

10

15

7

26

31

7

42

47

52

59

66

V.S.

71

76

80

83

86

89

92

94

♩ = 88,001053

2

5

8

11

14

18

22

25

28

31

V.S.



35

39

42

45

48

51

54

58

62

65

This image shows a musical score for guitar, consisting of ten staves of music. The staves are numbered 68, 71, 74, 77, 80, 83, 86, 89, 92, and 94. The music is written in a complex, multi-measure style, likely for a fingerstyle or advanced guitar technique. It features a variety of note values, including eighth and sixteenth notes, and rests. The key signature is G major (one sharp), and the time signature is 3/4. The notation includes many beamed notes and rests, suggesting a fast and intricate piece. The final measure of the page (measure 94) ends with a double bar line and a fermata, with a '2' written below it, indicating a second ending or a specific performance instruction.

Feuneuleu Prod - Shipwrecked Genesis

36

♩ = 88,001053

6



10



14



19



24



28



32



37



41



45



V.S.

49



53



57



61



65



69



73



77



81



85



89



93



Feuneuleu Prod - Shipwrecked Genesis

51

♩ = 88,001053

6

11

17

24

29

36

42

47

53

60

V.S.

67



73



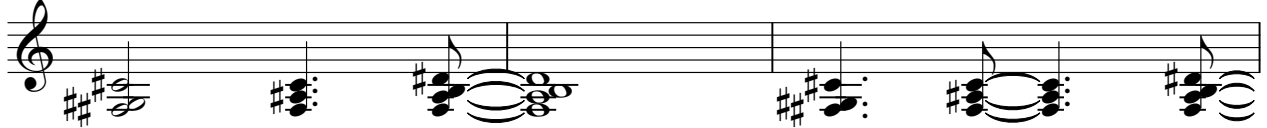
79



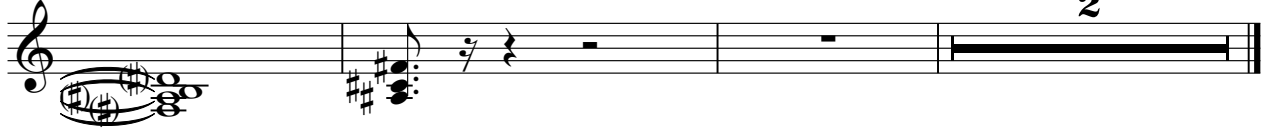
85



91



94



2