

Fragma - everytime you need me pulsedriver remix john s

♩ = 137,000061

BASSLINE

SYNTH

PLUCK

4

BASSLINE

SYNTH

PLUCK

6

BASSLINE

SYNTH

PLUCK

8

BASSLINE

SYNTH

PLUCK

10

LEAD

BASSLINE

Detailed description: This system covers measures 10 and 11. The 'LEAD' staff is in treble clef with a key signature of one sharp (F#). It features a sequence of eighth notes with slurs and accents. The 'BASSLINE' staff is in treble clef and contains a series of eighth notes, some with stems pointing downwards, indicating a bass line.

12

LEAD

BASSLINE

Detailed description: This system covers measures 12 and 13. The 'LEAD' staff continues the eighth-note sequence with a key signature change to two sharps (F# and C#) starting in measure 13. The 'BASSLINE' staff continues with eighth notes.

14

LEAD

BASSLINE

Detailed description: This system covers measures 14 and 15. The 'LEAD' staff continues the eighth-note sequence with a key signature change to three sharps (F#, C#, and G#) starting in measure 15. The 'BASSLINE' staff continues with eighth notes.

16

LEAD

BASSLINE

PLUCK

Detailed description: This system covers measures 16 and 17. The 'LEAD' staff continues the eighth-note sequence with a key signature change to four sharps (F#, C#, G#, and D#) starting in measure 17. The 'BASSLINE' staff continues with eighth notes. The 'PLUCK' staff is in treble clef and shows a sequence of chords and single notes.

18

LEAD

BASSLINE

PLUCK

Detailed description: This system covers measures 18 and 19. The 'LEAD' staff continues the eighth-note sequence with a key signature change to five sharps (F#, C#, G#, D#, and A#) starting in measure 19. The 'BASSLINE' staff continues with eighth notes. The 'PLUCK' staff continues with chords and single notes.

20

LEAD

BASSLINE

PLUCK

22

LEAD

BASSLINE

PLUCK

24

LEAD

BASSLINE

PLUCK

LEAD

Fragma - everytime you need me pulsedriver remix john s

♩ = 137,000061

9

12

15

18

21

24

Detailed description: This image shows a lead guitar score for the song 'Fragma - everytime you need me pulsedriver remix' by John S. The score is written in 4/4 time with a tempo of 137,000061. It consists of six staves of music. The first staff starts at measure 9 and contains a whole rest followed by eighth notes. The second staff starts at measure 12 and continues the eighth-note pattern. The third staff starts at measure 15, the fourth at measure 18, the fifth at measure 21, and the sixth at measure 24. The music features a consistent eighth-note rhythm with various accidentals (sharps and naturals) and a final whole rest at the end of the sixth staff.

BASSLINE

Fragma - everytime you need me pulsedriver remix john s

♩ = 137,000061

5

9

13

17

21

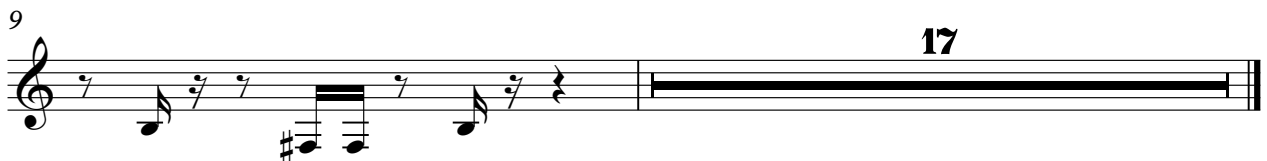
24

Detailed description: The image shows a musical score for a bassline in 4/4 time. The tempo is marked as ♩ = 137,000061. The score consists of seven staves of music. Each staff begins with a measure of rest, followed by four measures of a repeating eighth-note pattern. The notes are G4, A4, B4, and C5. The eighth notes are beamed in pairs. The pattern repeats every four measures. The final staff ends with a double bar line after the second measure of the pattern.

SYNTH

Fragma - everytime you need me pulsedriver remix john s

♩ = 137,000061



PLUCK

Fragma - everytime you need me pulsedriver remix john s

♩ = 137,000061

