

Fran - Can't Take My Eyes Off of You

♩ = 120,000000

Musical score for Trombone, Acc Bass, Fretless Bass, Synth Brass 2, and Strings. The score is in 4/4 time and features a tempo of 120,000000. The Trombone part is mostly silent. The Acc Bass and Fretless Bass parts play a rhythmic pattern of eighth notes. The Synth Brass 2 and Strings parts play a melodic line with a slur over the final two notes.

Musical score for Acc Bass, Fretless Bass, Synth Brass 2, and Strings. The score is in 4/4 time and features a tempo of 120,000000. The Acc Bass and Fretless Bass parts play a rhythmic pattern of eighth notes. The Synth Brass 2 and Strings parts play a melodic line with a slur over the final two notes. A measure number '5' is indicated at the start of the first staff.

9

This section of the score covers measures 9, 10, and 11. It features five staves: Trombone, Acc Bass, Fretless Bass, Synth Brass 2, and Strings. The Trombone part consists of block chords in the bass clef. The Acc Bass and Fretless Bass parts play eighth-note triplets. The Synth Brass 2 and Strings parts play eighth-note triplets in the treble clef. The Violin part plays eighth-note triplets in the treble clef. Measure 11 ends with a double bar line.

12

This section of the score covers measures 12, 13, and 14. It features five staves: Trombone, Acc Bass, Fretless Bass, Synth Brass 2, and Strings. The Trombone part consists of block chords in the bass clef. The Acc Bass part plays a sixteenth-note triplet in measure 12, followed by eighth-note triplets in measures 13 and 14. The Fretless Bass part plays eighth-note triplets. The Synth Brass 2 and Strings parts play eighth-note triplets in the treble clef. The Violin part plays eighth-note triplets in the treble clef. Measure 14 ends with a double bar line.

15 3

Trombone
Acc Bass
Fretless Bass
Synth Brass 2
Strings
Violin

Detailed description: This system of musical notation covers measures 15, 16, and 17. The Trombone part (bass clef) has rests in measures 15 and 17, with notes in measure 16. The Acc Bass and Fretless Bass parts (bass clef) play a rhythmic pattern of eighth notes with triplets in measures 15 and 17. The Synth Brass 2, Strings, and Violin parts (treble clef) play a melodic line with triplets in measures 15 and 17. The key signature has one flat (B-flat), and the time signature is 4/4.

18

Trombone
Acc Bass
Fretless Bass
Synth Brass 2
Strings
Violin

Detailed description: This system of musical notation covers measures 18, 19, and 20. The Trombone part (bass clef) has a rest in measure 19. The Acc Bass and Fretless Bass parts (bass clef) continue the rhythmic pattern from the previous system. The Synth Brass 2, Strings, and Violin parts (treble clef) continue the melodic line with triplets in measures 18 and 20. The key signature has one flat (B-flat), and the time signature is 4/4.

21

Trombone

Acc Bass

Fretless Bass

Synth Brass 2

Strings

Violin

24

Trombone

Acc Bass

Fretless Bass

Synth Brass 2

Strings

Violin

27 5

Trombone

Acc Bass

Fretless Bass

Synth Brass 2

Strings

Violin

29

Trombone

Acc Bass

Fretless Bass

Synth Brass 2

Strings

Violin

32

Trombone

Acc Bass

Fretless Bass

Synth Brass 2

Strings

Violin

35

Trombone

Acc Bass

Fretless Bass

Synth Brass 2

Strings

Violin

38

Trombone

Acc Bass

Fretless Bass

Synth Brass 2

Strings

Violin

Detailed description: This block contains the musical notation for measures 38, 39, and 40. The Trombone part is in bass clef, starting with a whole rest in measure 38 and playing eighth notes in measures 39 and 40. The Acc Bass and Fretless Bass parts are in bass clef, playing eighth notes with a triplet of eighth notes in measure 39. The Synth Brass 2, Strings, and Violin parts are in treble clef, playing eighth notes with a triplet of eighth notes in measure 39. The key signature has one flat (Bb), and the time signature is 4/4.

41

Acc Bass

Fretless Bass

Synth Brass 2

Strings

Detailed description: This block contains the musical notation for measures 41, 42, and 43. The Acc Bass and Fretless Bass parts are in bass clef, playing eighth notes. The Synth Brass 2 and Strings parts are in treble clef, playing eighth notes with a triplet of eighth notes in measure 41. The key signature has one flat (Bb), and the time signature is 4/4.

44

Acc Bass

Fretless Bass

Synth Brass 2

Strings

47

Trombone

Acc Bass

Fretless Bass

Synth Brass 2

Strings

Violin

51

Trombone

Acc Bass

Fretless Bass

Synth Brass 2

Strings

Violin

54

Trombone

Acc Bass

Fretless Bass

Synth Brass 2

Strings

Violin

57

Trombone

Acc Bass

Fretless Bass

Synth Brass 2

Strings

Violin

Detailed description: This system of musical notation covers measures 57 to 60. The Trombone part (bass clef) starts with a whole rest in measure 57, followed by a series of eighth notes in measures 58 and 59, and a quarter note in measure 60. The Acc Bass and Fretless Bass parts (bass clef) play a consistent eighth-note pattern throughout. The Synth Brass 2, Strings, and Violin parts (treble clef) play a series of chords and melodic lines, with the Violin part starting in measure 58.

60

Trombone

Acc Bass

Fretless Bass

Synth Brass 2

Strings

Violin

Detailed description: This system of musical notation covers measures 60 to 63. The Trombone part (bass clef) continues with eighth notes in measure 60, followed by a quarter note in measure 61, and eighth notes in measures 62 and 63. The Acc Bass and Fretless Bass parts (bass clef) continue with their eighth-note pattern. The Synth Brass 2, Strings, and Violin parts (treble clef) continue with their respective parts, with the Violin part playing a steady eighth-note line.

63 11

Trombone
Acc Bass
Fretless Bass
Synth Brass 2
Strings
Violin

This system of music covers measures 63 to 66. The Trombone part features a melodic line with eighth and sixteenth notes, including slurs and accents. The Acc Bass and Fretless Bass parts play a steady eighth-note accompaniment. The Synth Brass 2, Strings, and Violin parts provide harmonic support with chords and melodic lines, some featuring slurs and accents.

67

Trombone
Acc Bass
Fretless Bass
Synth Brass 2
Strings
Violin

This system of music covers measures 67 to 70. The Trombone part has a melodic line with slurs and accents. The Acc Bass and Fretless Bass parts play eighth-note accompaniment, with triplets in measures 68 and 70. The Synth Brass 2, Strings, and Violin parts feature melodic lines with triplets and slurs, providing harmonic support.

69

Trombone

Acc Bass

Fretless Bass

Synth Brass 2

Strings

Violin

72

Trombone

Acc Bass

Fretless Bass

Synth Brass 2

Strings

Violin

75

Trombone

Acc Bass

Fretless Bass

Synth Brass 2

Strings

Violin

78

Trombone

Acc Bass

Fretless Bass

Synth Brass 2

Strings

Violin

81

Trombone

Acc Bass

Fretless Bass

Synth Brass 2

Strings

Violin

Detailed description: This system of musical notation covers measures 81, 82, and 83. The Trombone part (bass clef) has a few notes in measure 81 and rests in 82 and 83. The Acc Bass and Fretless Bass parts (bass clef) play a rhythmic pattern of eighth notes with a flat in the first measure of each measure. The Synth Brass 2, Strings, and Violin parts (treble clef) play a complex rhythmic pattern with triplets and chords. Measure 81 has a flat key signature. Measure 82 has a flat key signature and a triplet of eighth notes. Measure 83 has a sharp key signature and a triplet of eighth notes.

84

Acc Bass

Fretless Bass

Synth Brass 2

Strings

Detailed description: This system of musical notation covers measures 84, 85, and 86. The Acc Bass and Fretless Bass parts (bass clef) continue the rhythmic pattern from the previous system. The Synth Brass 2 and Strings parts (treble clef) play a complex rhythmic pattern with chords and triplets. Measure 84 has a flat key signature. Measure 85 has a flat key signature and a triplet of eighth notes. Measure 86 has a sharp key signature and a triplet of eighth notes.

87

Acc Bass

Fretless Bass

Synth Brass 2

Strings

Detailed description: This system contains measures 87 through 90. The Acc Bass and Fretless Bass parts are in bass clef and play a rhythmic pattern of quarter notes with stems pointing up. The Synth Brass 2 and Strings parts are in treble clef and play a series of chords, some with grace notes. The key signature has one sharp (F#) and the time signature is 4/4. Measure 90 ends with a double bar line and a key signature change to one flat (Bb).

91

Trombone

Acc Bass

Fretless Bass

Synth Brass 2

Strings

Violin

Detailed description: This system contains measures 91 through 94. The Trombone part is in bass clef and plays a melodic line with some slurs. The Acc Bass and Fretless Bass parts continue with their rhythmic pattern. The Synth Brass 2, Strings, and Violin parts play chords and melodic lines. The key signature has one flat (Bb) and the time signature is 4/4. Measure 94 ends with a double bar line.

94

Trombone

Acc Bass

Fretless Bass

Synth Brass 2

Strings

Violin

Detailed description: This system contains measures 94, 95, and 96. The Trombone part features a melodic line with eighth notes and slurs, including a sharp sign in measure 96. The Acc Bass and Fretless Bass parts play a steady eighth-note bass line. The Synth Brass 2 and Strings parts play a similar eighth-note line with some rests. The Violin part plays a melodic line with eighth notes and slurs.

97

Trombone

Acc Bass

Fretless Bass

Synth Brass 2

Strings

Violin

Detailed description: This system contains measures 97, 98, and 99. The Trombone part has a melodic line in measure 97, followed by rests in measures 98 and 99. The Acc Bass and Fretless Bass parts continue with their eighth-note bass line. The Synth Brass 2 and Strings parts play a melodic line with eighth notes and slurs. The Violin part plays a melodic line with eighth notes and slurs.

100

Trombone

Acc Bass

Fretless Bass

Synth Brass 2

Strings

Violin

103

Trombone

Acc Bass

Fretless Bass

Synth Brass 2

Strings

Violin

106

Trombone

Acc Bass

Fretless Bass

Synth Brass 2

Strings

Violin

Detailed description: This is a page of a musical score, page 18, numbered 106. It features six staves. The Trombone staff is in bass clef and contains three whole notes in the second measure. The Acc Bass and Fretless Bass staves are in bass clef and play a rhythmic pattern of eighth notes in the first measure, followed by a sustained line of eighth notes in the second measure. The Synth Brass 2 and Strings staves are in treble clef and play a series of chords in the first measure, followed by sustained notes in the second measure. The Violin staff is in treble clef and has a whole rest in the first measure, followed by three whole notes in the second measure.

Trombone

Fran - Can't Take My Eyes Off of You

♩ = 120,000000

7

12

17

22

27

32

37

9

Detailed description: This musical score is for the Trombone part of the song 'Can't Take My Eyes Off of You' by Fran. It is written in 4/4 time with a tempo of 120,000,000. The score consists of seven systems of music, each starting with a measure number. The first system begins with a whole rest followed by a bar line and a triplet of eighth notes. The second system starts with a sextuplet of eighth notes, followed by two triplets of eighth notes and another triplet. The third system features three triplets of eighth notes. The fourth system contains three triplets of eighth notes. The fifth system has two triplets of eighth notes, a sextuplet of eighth notes, and two more triplets. The sixth system includes two triplets of eighth notes. The seventh system starts with two triplets of eighth notes and ends with a whole rest. The number '9' is placed above the final whole rest.

2

50 *Trombone*

54

59

63

68

73

78

91

95

100

104 Trombone 3

Fran - Can't Take My Eyes Off of You

Acc Bass

♩ = 120,000000

V.S.

52



57



61



66



71



76



81



86



92



97



101



105



Fretless Bass

Fran - Can't Take My Eyes Off of You

♩ = 120,000000

V.S.

52



57



61



66



71



76



81



86



92



97



101



105



Synth Brass 2

Fran - Can't Take My Eyes Off of You

♩ = 120,000000

7

11

14

18

22

26

29

33

37

V.S.

41

45

49

53

57

61

65

69

73

77

81

81

Musical notation for measure 81, featuring a treble clef, a key signature of one sharp (F#), and a 4/4 time signature. The melody consists of quarter notes and eighth notes, with a triplet of eighth notes in the middle. The accompaniment is a series of chords, including a half note chord and a quarter note chord.

85

Musical notation for measure 85, featuring a treble clef, a key signature of one sharp (F#), and a 4/4 time signature. The melody consists of quarter notes and eighth notes. The accompaniment is a series of chords, including a half note chord and a quarter note chord.

89

Musical notation for measure 89, featuring a treble clef, a key signature of one sharp (F#), and a 4/4 time signature. The melody consists of quarter notes and eighth notes. The accompaniment is a series of chords, including a half note chord and a quarter note chord.

93

Musical notation for measure 93, featuring a treble clef, a key signature of one sharp (F#), and a 4/4 time signature. The melody consists of quarter notes and eighth notes. The accompaniment is a series of chords, including a half note chord and a quarter note chord.

96

Musical notation for measure 96, featuring a treble clef, a key signature of one sharp (F#), and a 4/4 time signature. The melody consists of quarter notes and eighth notes. The accompaniment is a series of chords, including a half note chord and a quarter note chord.

100

Musical notation for measure 100, featuring a treble clef, a key signature of one sharp (F#), and a 4/4 time signature. The melody consists of quarter notes and eighth notes. The accompaniment is a series of chords, including a half note chord and a quarter note chord.

103

Musical notation for measure 103, featuring a treble clef, a key signature of one sharp (F#), and a 4/4 time signature. The melody consists of quarter notes and eighth notes. The accompaniment is a series of chords, including a half note chord and a quarter note chord.

105

Musical notation for measure 105, featuring a treble clef, a key signature of one sharp (F#), and a 4/4 time signature. The melody consists of quarter notes and eighth notes. The accompaniment is a series of chords, including a half note chord and a quarter note chord.

Fran - Can't Take My Eyes Off of You

Strings

♩ = 120,000000

7

11

14

18

22

26

29

33

37

V.S.

Musical score for strings, measures 41-77. The score is written in treble clef with a key signature of one flat (B-flat). The music features a variety of rhythmic patterns, including eighth and sixteenth notes, and rests. Several measures contain triplets, indicated by a '3' over the notes. The score is divided into systems, with measure numbers 41, 45, 49, 53, 57, 61, 65, 69, 73, and 77 marking the beginning of each system. The notation includes stems, beams, and various accidentals (sharps, flats, and naturals).

81

85

89

93

96

100

103

105

Violin

Fran - Can't Take My Eyes Off of You

♩ = 120,000000

8

13

18

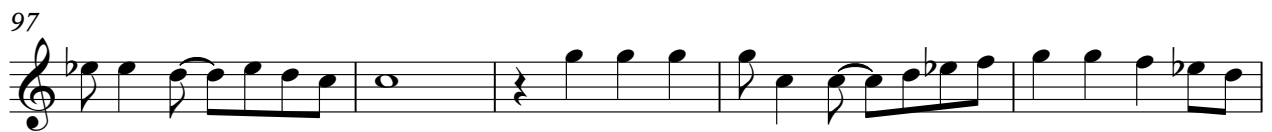
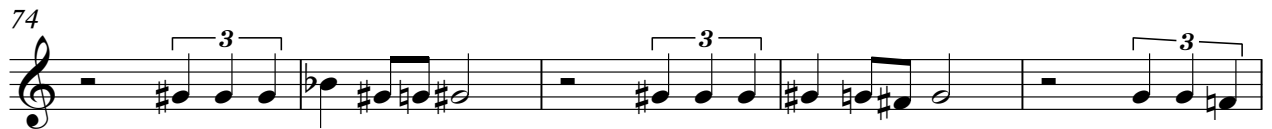
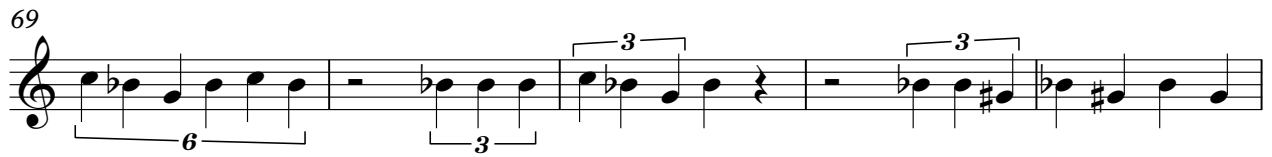
23

28

33

38

9



105

