

# Tokio Hotel - Scream

0.0"  
1.1,00  
Intro

♩ = 94,000130

Gustav

Dude

Tom

Georg

4

Gustav

Tom

Georg

17.8"  
8.1,00  
Verse 1

7

Gustav

Tom

Georg

10

Gustav

Tom

Georg

13

Gustav

Tom

Georg

16

Gustav

Tom

Georg

43.4"  
18.1,00  
Pre-chorus

19

Gustav

Tom

Georg

48.5"  
20.1,00  
Chorus



34

Gustav

Tom

Georg

1'34.4"  
38.1,00  
Pre-chorus

37

Gustav

Tom

Georg

1'39.5"  
40.1,00  
Chorus

40

Gustav

Tom

Georg

43

Gustav

Tom

Georg

1'59.9"  
48.1,00  
Interlude

46

Gustav

Tom

Georg

49

Gustav

Tom

Georg

2'12.7"  
53.1,00  
Interlude 2

52

Gustav

Tom

Georg

54

Gustav

Tom

Georg

56

Gustav

Tom

Georg

59

Gustav

Tom

Georg

62

Gustav

Tom

Georg

65

Gustav

Tom

Georg

68

Gustav

Tom

Georg

70

Gustav

Tom

Georg

72

Gustav

Tom

Georg

74

Gustav

Dude

Tom

Georg

♩ = 94,000130

6

9

12

15

19

23

27

31

34

Detailed description: The image shows a guitar score for the song 'Scream' by Tokio Hotel. It is written for a guitar in standard tuning (E2-A2-D3-G3-B3-E4) in 4/4 time. The tempo is marked as ♩ = 94,000130. The score consists of ten systems of music. The first system includes a treble clef, a key signature of one sharp (F#), and a 4/4 time signature. It begins with a double bar line, a key signature change to one sharp, and a tempo marking. The first system contains four measures with eighth and sixteenth notes, some with dynamic markings like 'x' and 'v'. The subsequent systems are numbered 6, 9, 12, 15, 19, 23, 27, 31, and 34. Systems 6-15 and 19-34 primarily consist of eighth-note patterns with 'x' marks below the notes, indicating muted notes. Systems 12, 15, 19, 23, and 27 include dynamic markings like 'x' and 'v'. System 15 features a change in the bass line with eighth notes. System 27 has a complex rhythmic pattern with sixteenth notes and rests. The score ends with a double bar line at the end of system 34.



38

43

47

51

54

56

60

65

68

71



Dude

# Tokio Hotel - Scream

♩ = 94,000130

72

2

# Tokio Hotel - Scream

Tom

♩ = 94,000130

E			
B			
G	3 3	3 3	3 3
A	3 3	3 3	3 3
D	1 1 1 2	1 1 1 1	1 1 1 2
A		4	4
E			
A			

5

T			4 1 1	1	2 2	4 1 1
A	3 3	3 3 3				
B	1 1 1 2	1 1 1 4	4			
			2			

11

T	1 2 2	4 1 1	1 2 2	4 1 1	1 2 2	4 1 1
A						
B						

17

T	1 2 2 3			3 3	
A				3 3	
B		6 6 6 6 6 6 6 6	4 4 4 4 4 4 4 4	1 1 1 2	1 1 1 4
		6 6 6 6 6 6 6 6	2 2 2 2 2 2 2 2		

21

T	3 3	3 3		3 3	
A	3 3	3 3		3 3	
B	1 1 1 2	1 1 1 2	4	1 1 1 2	1 1 1 4
		4	2	4 6 6 6	4 6 6 6

25

T				4 1 1	1 2 2
A	3 3	3 3			
B	1 1 1 2	1 1 1 2	4	4 6 6 6	4 6 6 6
		4	2	4 6 6 6	4 6 6 6

30

T	4 1 1	1 2 2	4 1 1	1 2 2	4 1 1	1 2 2
A						
B						

36

T	4 1 1	1 2 2 3		
A				
B			6 6 6 6 6 6 6 6	4 4 4 4 4 4 4 4
			6 6 6 6 6 6 6 6	2 2 2 2 2 2 2 2

40

T					
A	3 3	3 3	3 3		
B	1 1 1 2	1 1 1 2	1 1 1 2	4	4 6 6 6
		4	4	2	4 6 6 6

44

T					
A	3 3	3 3	3 3		
B	1 1 1 2	1 1 1 2	1 1 1 2	4	4 6 6 6
		4	4	2	4 6 6 6

V.S.

2 48

Tom

	1	1 2	1 1	1	2	1 2	1 1	1	1 2	1 1	13	6	13 14	11 13	13
T															
A		3	4			4			3	4					
B															

52

	13	6	13 14	11 13	13										
T															
A															
B					1 2	4	1	1	1 2	4	1	1 2	4	1	

55

T															
A															
B	1 2	4	1	1	1 2	4	1	1 2	4	1	6	6	3	3	3

59

T	3	3													
A	3	3													
B	1	1	1 2	4	1 1 1	1	1	1 2	4	1 1 1	4	4	6	6	6

63

T	3	3													
A	3	3													
B	1	1	1 2	4	1 1 1	1	1	1 2	4	1 1 1	4	4	6	6	6

67

T															
A															
B	1 2	4	1 1 1	1 2	4	1 1 1	1 2	4	1 1 1	1 2	4	1 1 1	1 2	4	1 1 1

70

T															
A	4														
B	4	2	4	6	6	6	1 2	4	1 1 1	1 2	4	1 1 1	1 2	4	1 1 1

73

T															
A															
B	1 2	4	1 1 1	1 2	4	1 1 1	4	4	6	6	6	3	3	1	



44



47



51



56



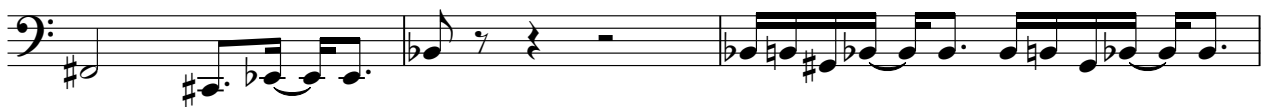
59



62



65



68



71



73

