

Frank & Orchestra Sinatra - Strangers In The Night 2

♩ = 88,001053

FLUTE

FR.HORN

FR.HORN

TUBA

DRUMS

NYLON GTR

ACOU BASS

STRINGS

TREMOLOSTR

STRINGS

MELODY

A.PIANO 2

5

FLUTE
FR.HORN
FR.HORN
DRUMS
NYLON GTR
ACOU BASS
STRINGS
TREMLOSTR
STRINGS
MELODY

Detailed description: This system contains measures 5 through 8 of the score. The Flute part has a melodic line starting in measure 5. The French Horns have a similar melodic line. The Drums play a consistent rhythmic pattern. The Nylon Guitar and Acoustic Bass provide harmonic support with chords and bass lines. The Strings section includes a Tremolo section and a regular string section. A Melody line is also present at the bottom of the system.



9

FR.HORN
TUBA
DRUMS
NYLON GTR
ACOU BASS
STRINGS
TREMLOSTR
STRINGS
MELODY

Detailed description: This system contains measures 9 through 12 of the score. The French Horn part continues with its melodic line. The Tuba part enters in measure 9. The Drums maintain their rhythmic pattern. The Nylon Guitar and Acoustic Bass continue with their harmonic parts. The Strings section remains active with tremolo and regular parts. The Melody line continues at the bottom.

13

FR.HORN

TUBA

DRUMS

NYLON GTR

ACOU BASS

STRINGS

TREMOLOSTR

STRINGS

MELODY

Detailed description: This system of musical notation covers measures 13, 14, and 15. The FR.HORN part (treble clef) starts with a whole rest in measure 13, followed by a quarter note G4 in measure 14, and a quarter note F4 in measure 15. The TUBA part (bass clef) plays a steady quarter-note bass line: G2, F2, E2, D2. The DRUMS part (snare drum) features a consistent eighth-note pattern. The NYLON GTR part (treble clef) plays a complex chordal accompaniment with various chords and melodic fragments. The ACOU BASS part (bass clef) plays a simple bass line with quarter notes. The STRINGS part (alto clef) consists of sustained notes with long horizontal lines indicating they are held. The TREMOLOSTR part (alto clef) plays a tremolo effect on a sustained note. The lower STRINGS part (bass clef) plays a steady eighth-note bass line. The MELODY part (treble clef) follows the same pattern as the FR.HORN part.



16

FR.HORN

DRUMS

NYLON GTR

ACOU BASS

STRINGS

TREMOLOSTR

STRINGS

MELODY

Detailed description: This system of musical notation covers measures 16, 17, and 18. The FR.HORN part (treble clef) plays a melodic line: quarter note G4, quarter note F4, quarter note E4, quarter note D4. The DRUMS part (snare drum) continues with the eighth-note pattern. The NYLON GTR part (treble clef) plays a complex chordal accompaniment. The ACOU BASS part (bass clef) plays a simple bass line with quarter notes. The STRINGS part (alto clef) consists of sustained notes with long horizontal lines. The TREMOLOSTR part (alto clef) plays a tremolo effect on a sustained note. The lower STRINGS part (bass clef) plays a steady eighth-note bass line. The MELODY part (treble clef) follows the same pattern as the FR.HORN part.

19

FLUTE

FR.HORN

TUBA

DRUMS

NYLON GTR

ACOU BASS

STRINGS

TREMOLOSTR

STRINGS

MELODY



23

FLUTE

TUBA

DRUMS

NYLON GTR

ACOU BASS

STRINGS

TREMOLOSTR

STRINGS

MELODY

26 $\text{♩} = 84,0086700084 = 78,000076 \text{♩} = 75,000000000$ ⁵

FLUTE

TUBA

DRUMS

NYLON GTR

ACOU BASS

STRINGS

TREMOLOSTR

STRINGS

MELODY



30 $\text{♩} = 88,001053$

FR.HORN

DRUMS

NYLON GTR

ACOU BASS

STRINGS

TREMOLOSTR

STRINGS

MELODY

33

FR.HORN

TUBA

DRUMS

NYLON GTR

ACOU BASS

STRINGS

TREMOLOSTR

STRINGS

MELODY



37

FLUTE

FR.HORN

TUBA

DRUMS

NYLON GTR

ACOU BASS

STRINGS

TREMOLOSTR

STRINGS

MELODY

A.PIANO 2

40

FLUTE

FR.HORN

TUBA

DRUMS

NYLON GTR

ACOU BASS

STRINGS

TREMOLOSTR

STRINGS

A.PIANO 2

44

FLUTE

FR.HORN

TUBA

DRUMS

NYLON GTR

ACOU BASS

STRINGS

TREMOLOSTR

STRINGS

MELODY

A.PIANO 2

48

FLUTE

FR.HORN

TUBA

DRUMS

NYLON GTR

ACOU BASS

STRINGS

TREMOLOSTR

STRINGS

MELODY



52

FLUTE

FR.HORN

TUBA

DRUMS

NYLON GTR

ACOU BASS

STRINGS

TREMOLOSTR

STRINGS

MELODY

56

Musical score for multiple instruments. The score is written for the following instruments: FLUTE, FR.HORN, TUBA, DRUMS, NYLON GTR, ACOU BASS, STRINGS, TREMOLOSTR, and MELODY. The score is in 2/4 time and consists of 8 measures. The MELODY part features a triplet of eighth notes in the second measure. The STRINGS part includes a tremolo section in the first measure. The NYLON GTR part features a complex rhythmic pattern with many beamed notes. The ACOU BASS part has a simple bass line. The DRUMS part has a consistent drum pattern. The FR.HORN and TUBA parts have sparse notes. The FLUTE part has a few notes in the first measure.

FR.HORN

Frank & Orchestra Sinatra - Strangers In The Night 2

♩ = 88,001053

5

10

15

20

6

♩ = 84,000670848,0000000053

31

36

41

2

47

53

56

TUBA

Frank & Orchestra Sinatra - Strangers In The Night 2

♩ = 88,001053

11 8

22

26

♩ = 84,800070840750000053

6

36

40

45

2

51

56

DRUMS

Frank & Orchestra Sinatra - Strangers In The Night 2

♩ = 88,001053

5

8

11

14

17

20

23

26

30

♩ = 88,001053

V.S.

DRUMS

33

Musical notation for drum set at measure 33. The staff shows a sequence of eighth notes with 'x' marks above them, indicating cymbal hits. The notes are grouped in pairs, with the first note of each pair having a cymbal hit.

36

Musical notation for drum set at measure 36. The staff shows a sequence of eighth notes with 'x' marks above them, indicating cymbal hits. The notes are grouped in pairs, with the first note of each pair having a cymbal hit. The notation includes some rests and a final group of notes with cymbal hits.

39

Musical notation for drum set at measure 39. The staff shows a sequence of eighth notes with 'x' marks above them, indicating cymbal hits. The notes are grouped in pairs, with the first note of each pair having a cymbal hit.

43

Musical notation for drum set at measure 43. The staff shows a sequence of eighth notes with 'x' marks above them, indicating cymbal hits. The notes are grouped in pairs, with the first note of each pair having a cymbal hit. There are some rests and a final group of notes with cymbal hits.

48

Musical notation for drum set at measure 48. The staff shows a sequence of eighth notes with 'x' marks above them, indicating cymbal hits. The notes are grouped in pairs, with the first note of each pair having a cymbal hit.

51

Musical notation for drum set at measure 51. The staff shows a sequence of eighth notes with 'x' marks above them, indicating cymbal hits. The notes are grouped in pairs, with the first note of each pair having a cymbal hit.

54

Musical notation for drum set at measure 54. The staff shows a sequence of eighth notes with 'x' marks above them, indicating cymbal hits. The notes are grouped in pairs, with the first note of each pair having a cymbal hit.

57

Musical notation for drum set at measure 57. The staff shows a sequence of eighth notes with 'x' marks above them, indicating cymbal hits. The notes are grouped in pairs, with the first note of each pair having a cymbal hit. The notation includes some rests and a final group of notes with cymbal hits. A double bar line is present at the end of the measure, with a '2' above it, indicating a double bar line.

♩ = 88,001053

5

8

11

14

17

20

23

26

♩ = 84,0010670084 = 77,50000000

2

NYLON GTR

♩ = 88,001053

30

33

36

39

42

46

49

52

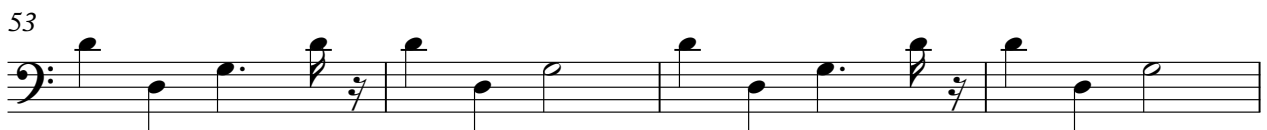
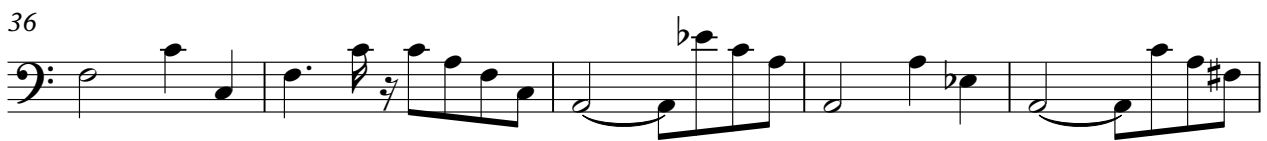
56

58

ACOU BASS

Frank & Orchestra Sinatra - Strangers In The Night 2

♩ = 88,001053



V.S.

STRINGS

Frank & Orchestra Sinatra - Strangers In The Night 2

♩ = 88,001053

5

11

18

23

28

♩ = 84,0800000848,0007500000088,001053

34

39

43

48

V.S.

2

STRINGS

53

Musical notation for strings, measures 53-56. The notation is on a single staff with a bass clef. Measure 53 starts with a double bar line and a fermata over a whole note. Measure 54 contains a half note followed by a quarter note. Measure 55 contains a half note followed by a quarter note. Measure 56 contains a half note followed by a quarter note. The notes are: G2 (measures 53-54), A2 (measures 54-55), B2 (measures 55-56), and C3 (measures 56-57).

57

Musical notation for strings, measures 57-60. The notation is on a single staff with a bass clef. Measure 57 contains a half note followed by a quarter note. Measure 58 contains a half note followed by a quarter note. Measure 59 contains a half note followed by a quarter note. Measure 60 contains a half note followed by a quarter note. The notes are: G2 (measures 57-58), A2 (measures 58-59), B2 (measures 59-60), and C3 (measures 60-61).

TREMOLOSTR

Frank & Orchestra Sinatra - Strangers In The Night 2

♩ = 88,001053

7

13

21

26

♩ = 84,80000084 = 78,807576064,088,001053

32

39

43

50

55

Frank & Orchestra Sinatra - Strangers In The Night 2

STRINGS

♩ = 88,001053

8

14

19

26

♩ = 84,001070084 ♩ = 75,001070088,001053

32

38

46

51

56

Frank & Orchestra Sinatra - Strangers In The Night 2

MELODY

♩ = 88,001053

4

9

14

19

24

28

32

35

6

2

MELODY

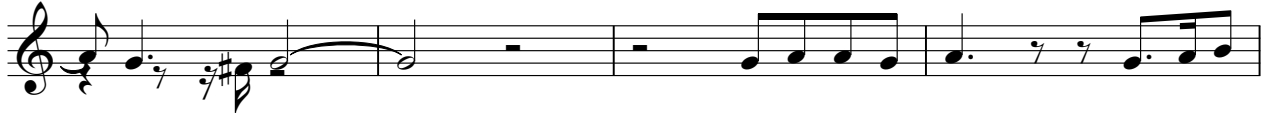
44



48



52



56



A.PIANO 2

Frank & Orchestra Sinatra - Strangers In The Night 2

♩ = 88,001053 ♩ = 84,810079375618000053

27 7

39

42

16